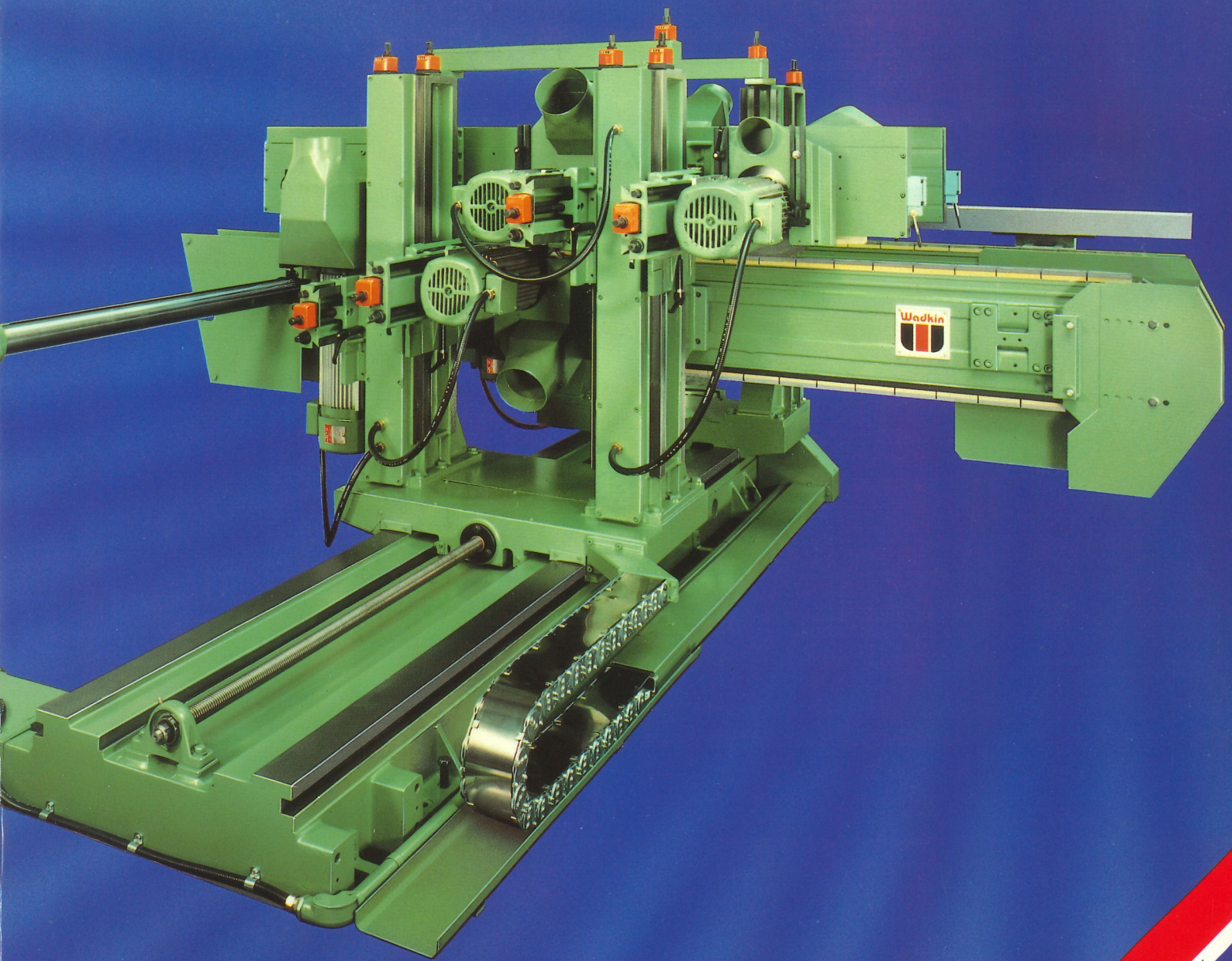


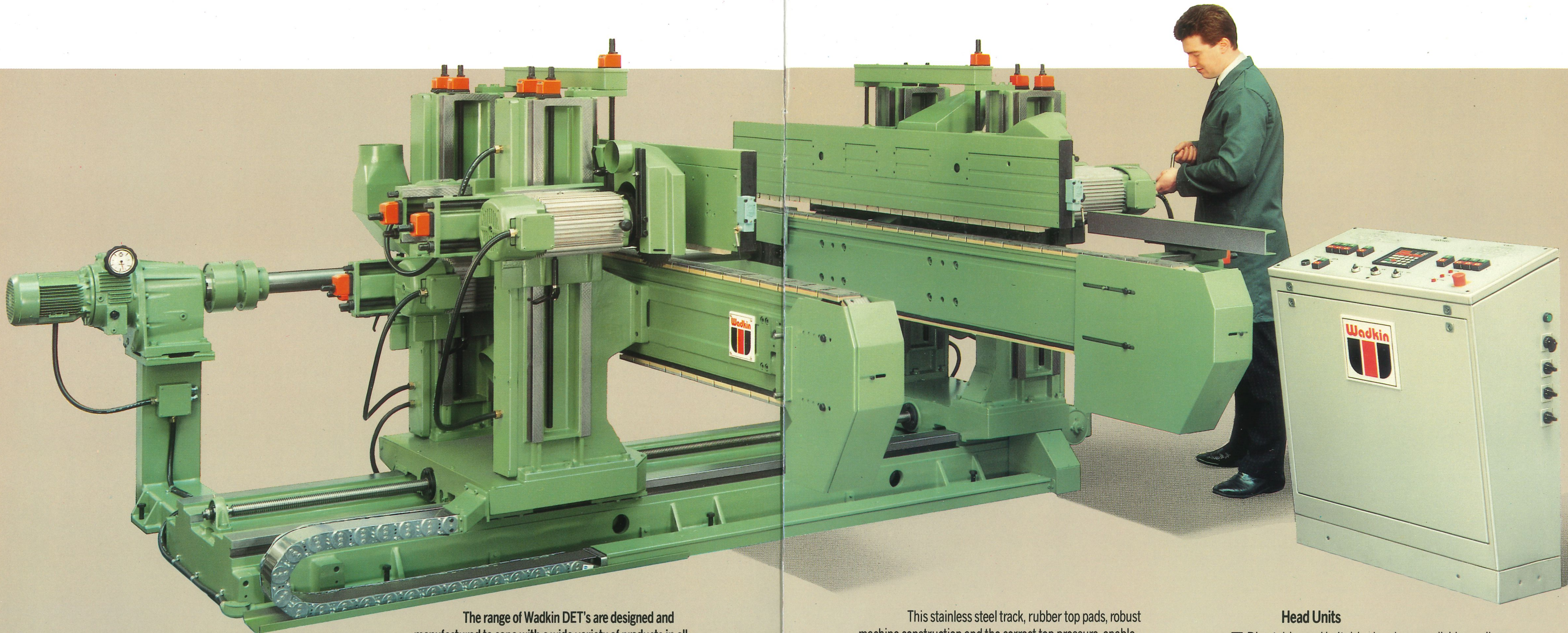


WT SERIES

DOUBLE END TENONERS



ALL YOU EVER NEEDED FROM A DOUBLE END TENONER~ WHATEVER THE APPLICATION



The range of Wadkin DET's are designed and manufactured to cope with a wide variety of products in all aspects of joinery, furniture and panel production.

Selection of Models

All WT machines are custom-built to suit your own particular requirements. The series is based on 4 main models. Available with varying head configurations.

Technical Advice

Manufactured in the UK to the highest standard, the Wadkin range of DET's is supported by a team of experienced technicians, whose advice and general help are readily available to ensure the correct solution to a particular production problem.

Squareness

The WT is fitted with the best track system in the world, utilising stainless steel track links originally made by Rolls-Royce.

This stainless steel track, rubber top pads, robust machine construction and the correct top pressure, enable the WT to produce square components for years to come.

- Stainless steel track links.
- Steel or rubber top track pads for joinery or panel production.
- DRO to all adjustments.
- Wide range of head motors varying from 4 kW (5 HP) up to 11 kW (15 HP).
- Available with varying stages of electronic/computer positioning and timing.
- Caterpillar or Vee belt pressures.
- Robust cast iron bed with widely spaced guide/control rails with central pull to ensure accurate beam control when traversing.

Head Units

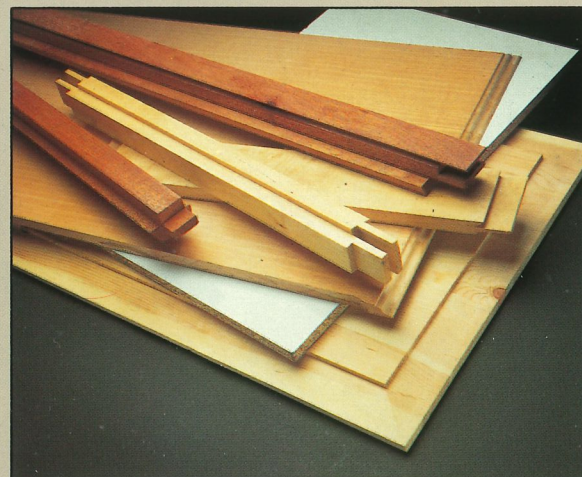
- Direct drive and belt drive heads are available on all models.
- Can be specified for horizontal, vertical or intermediate angle mounting.

Scoring Units

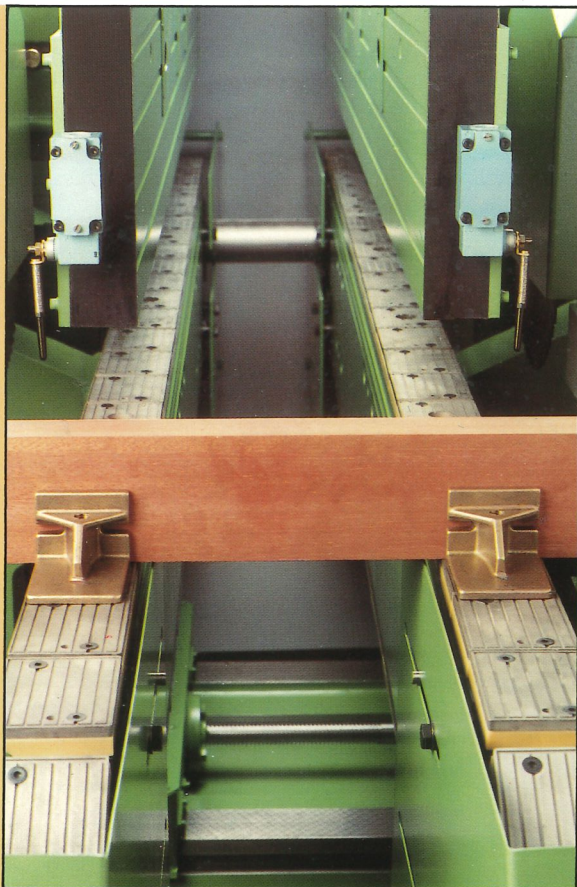
- To prevent breakout on underside and trailing edges of panels and crossgrain work.
- Available on models 1 S and 2 S.

Relishing Units

- Pneumatically controlled.
- Jump operation by limit switch or timing drum.

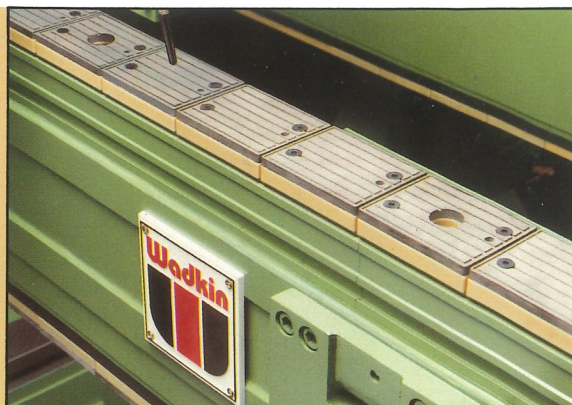


ADVANCED BUILT-IN FEATURES



△ Advanced design track with interchangeable surfaces to suit every application, fitted with varying types of quick change dogs suitable for all joinery, furniture and panel work.

Caterpillar top pressures. Ideal for positive feeding of joinery sections and multiple components per dog, complete with digital readout as standard. Optional adjustable side movement.

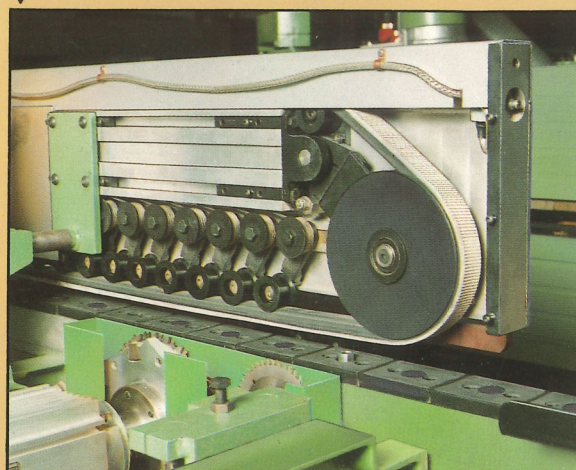


△ Steel top track pads for joinery components.



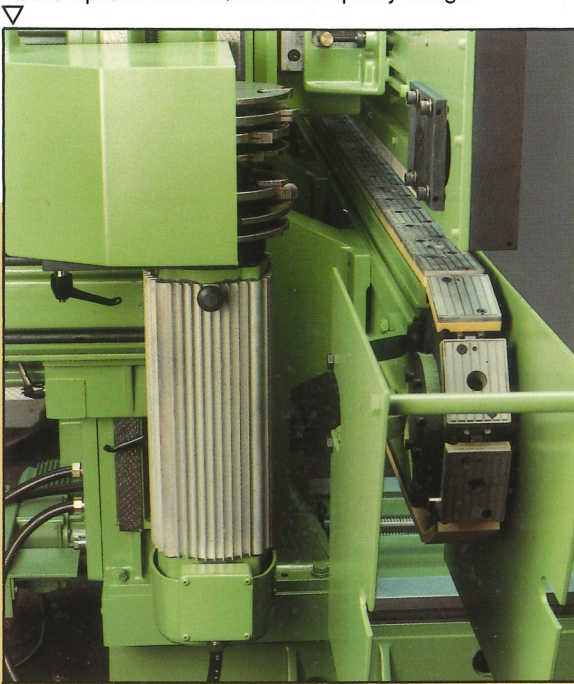
△ Rubber top track pads for panel and furniture components.

Vee belt top pressures. Close centre rollers along the full length providing positive feeding of panels. Available driven or idle, complete with digital readout. Optional adjustable side movement.

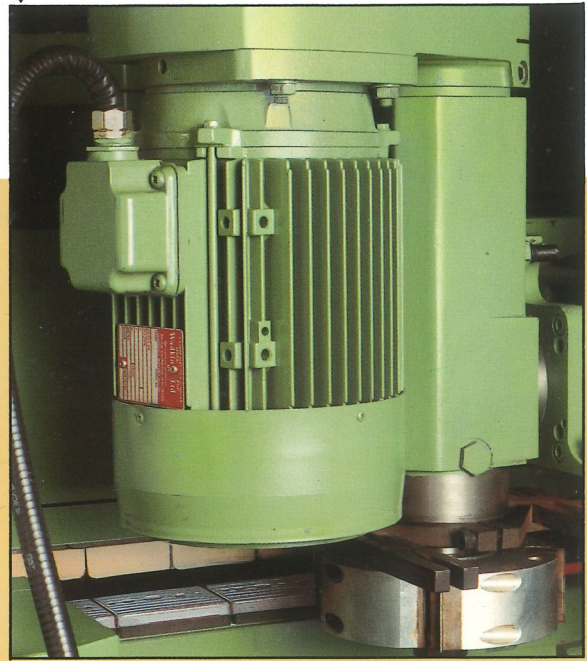


Head Units

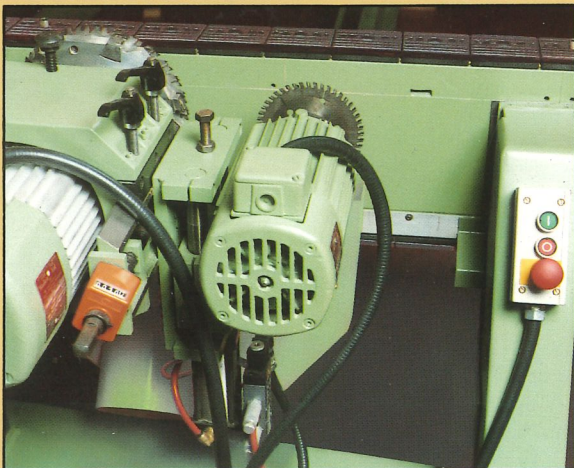
Type 'A' direct drive head designed for continuous and heavy duty work. Running at 3000 rev/min. Available with 3.7, 5.5 or 7.5 kW motors. Optional 6000 rev/min with frequency changer.



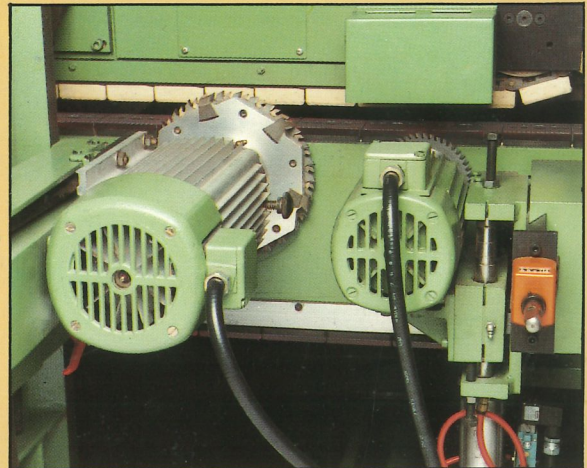
Type 'B' belt drive head. Two or three speed heads running at 3000/6000 or 1500/3000/6000 rev/min. Available with 3.7 or 5.5 kW motors. Particularly suited to small diameter cutters.



Scoring Units

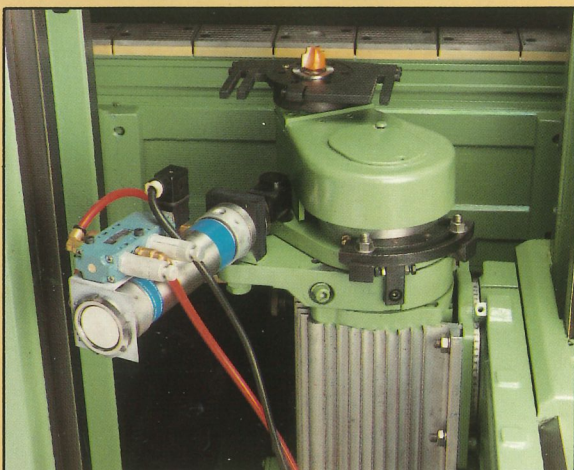


△ Only available with 'A' type heads. Direct drive or belt drive. Fixed or jump operation by limit switch or timing drum.

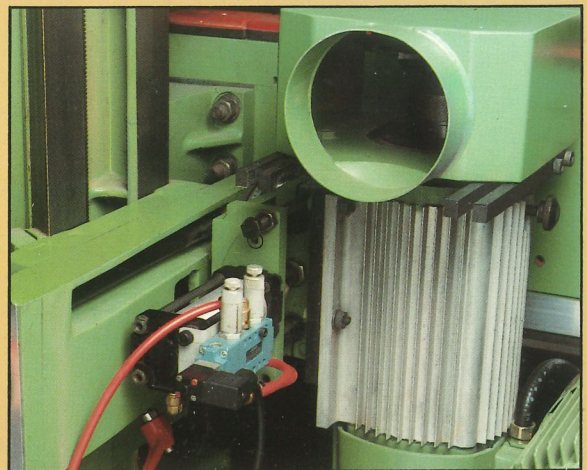


△ Available with 'A' and 'B' type heads. Direct drive or belt drive. Fixed or jump operation by limit switch or timing drum.

Relishing Units



△ High speed relisher. High speed attachment for type 'A' or 'B' heads. Ideal for stopped grooves, chamfers, etc.

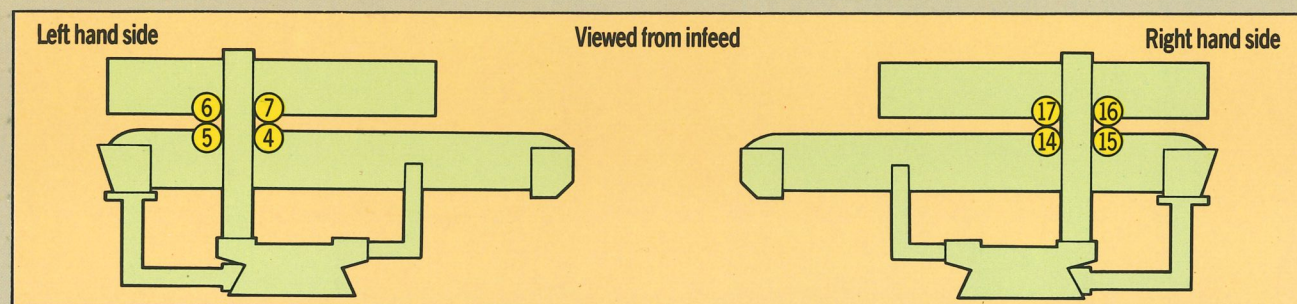


△ Heavy duty relisher. Heavy duty unit to eliminate breakout when backing dogs are not fitted. Ideal for sash profiling, etc.

FOUR MAIN MODELS FOR A WIDE VARIETY OF APPLICATIONS

WT/1 Infeed Capacities

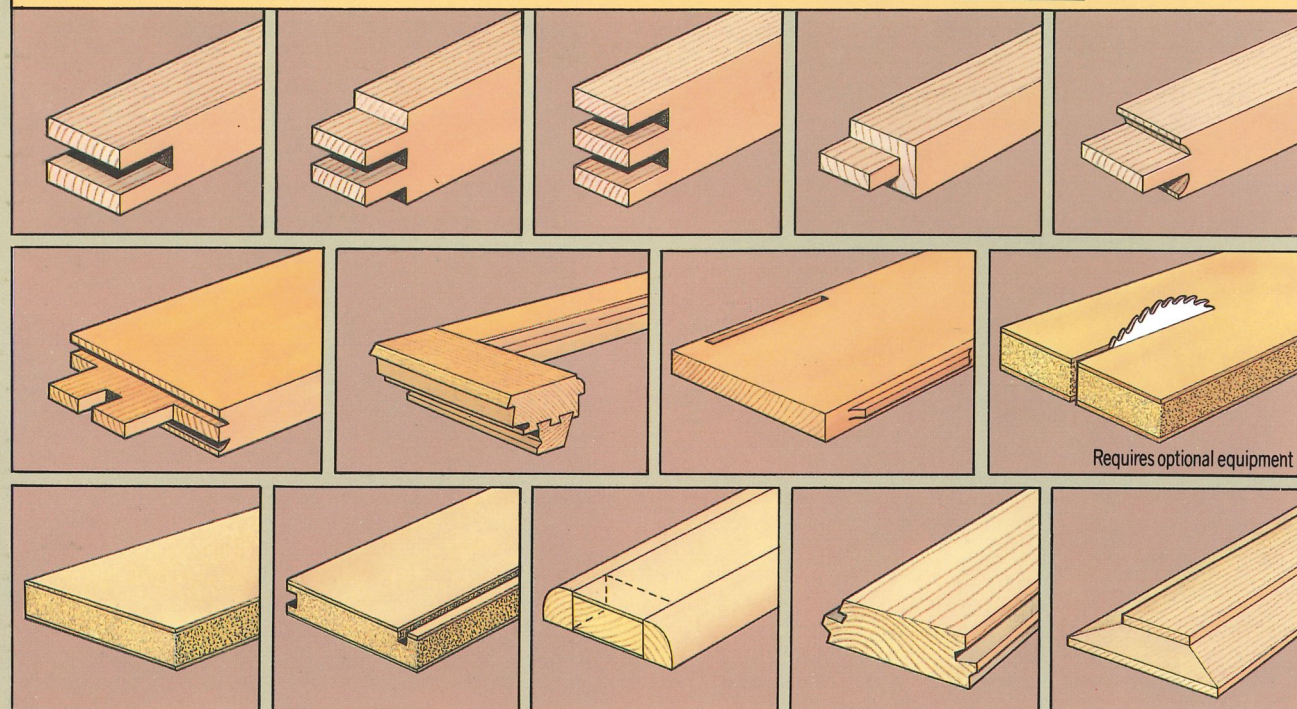
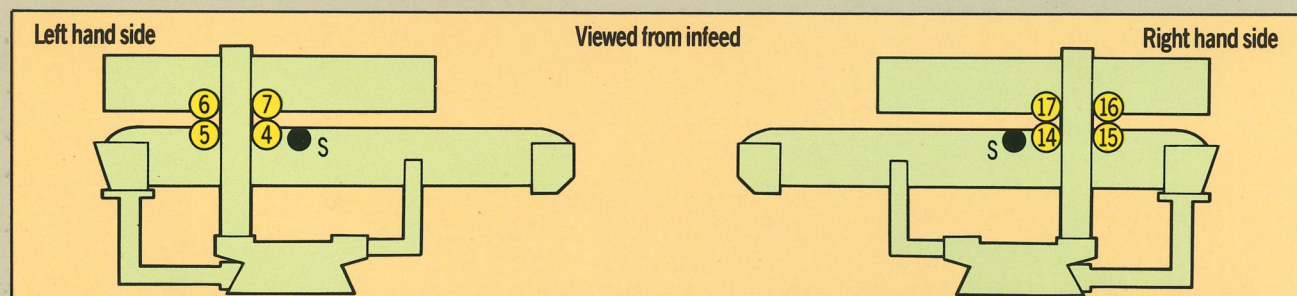
WT 48/1	570 mm	22½ ins.
WT 56/1	970 mm	38 ins.
WT 64/1	1370 mm	54 ins.
WT 72/1	1770 mm	69½ ins.



WT/1S (scorer)

Infeed Capacities

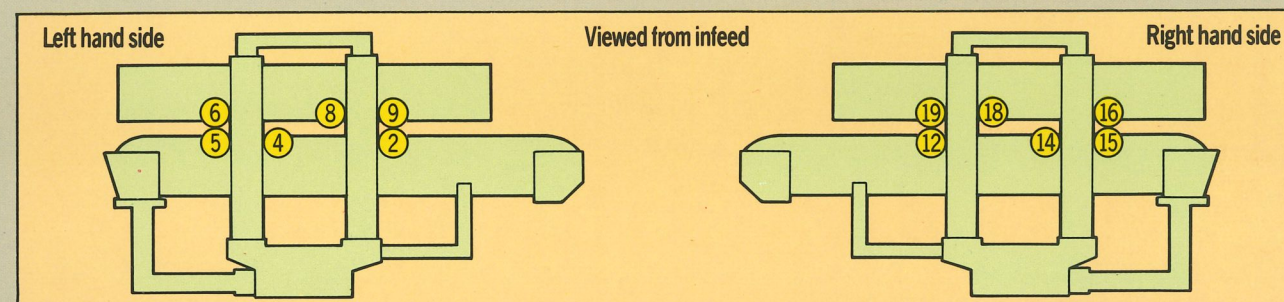
WT 48/1S	570 mm	22½ ins.
WT 56/1S	970 mm	38 ins.
WT 64/1S	1370 mm	54 ins.
WT 72/1S	1770 mm	69½ ins.



Typical Examples

WT/2 Infeed Capacities

WT 56/2	430 mm	17 ins.
WT 64/2	830 mm	32½ ins.
WT 72/2	1230 mm	48½ ins.



WT/2S (scorer)

WT 64/2S

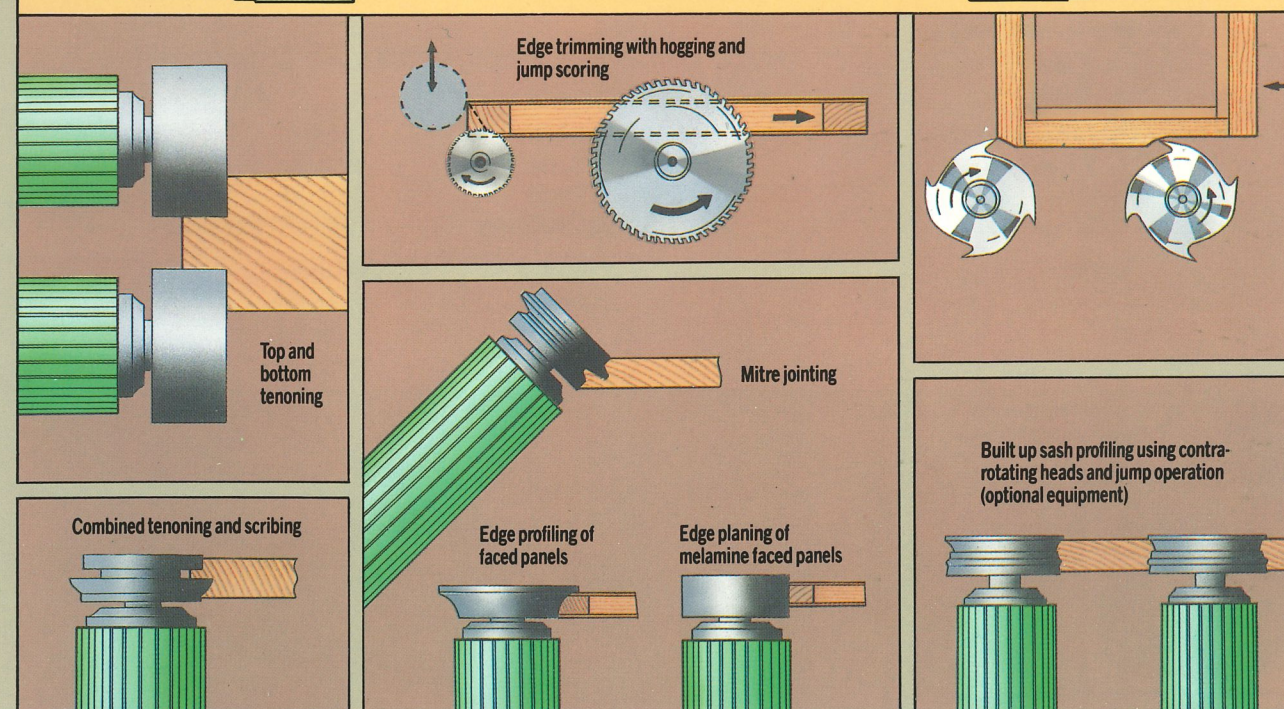
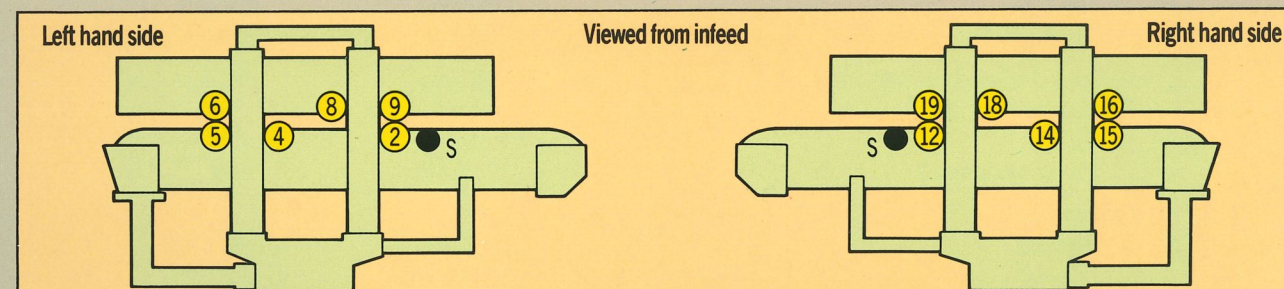
680 mm

26¾ ins.

WT 72/2S

1080 mm

42½ ins.



Cutting Applications

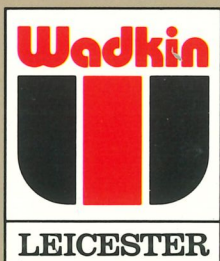


SPECIFICATIONS

Max thickness of timber admitted:—			
Caterpillar		180 mm	7 ins.
Idle Vee belt		180 mm	7 ins.
Driven Vee belt		150 mm	6 ins.
Distance across track:—			
Minimum across outside of chain tracks		190 mm	7½ ins.
Max. std.		1900 mm	74¾ ins.
optional		3000 mm	118 ins.
Maximum overhang from edge of track:—			
		200 mm	7¾ ins.
Top pressure adjustment:—			
Vertical		180 mm	7 ins.
Horizontal (optional)		25 mm	1 ins.
Feed speed:—			
Standard		3.5–19 m/min	11.5–62 ft/min
Optional		8.5–50 m/min	28–164 ft/min
Head Motors (Power):—			
'A' type		3.7/5.5/7.5/9.0 kW	5/7.5/10/12 HP
'B' type		3.7/5.5 kW	5/7.5 HP
Head Motors (Speed):—			
'A' type	50 Hz	Standard 3000 rpm	Optional 6000 rpm
	60 Hz	3600 rpm	7200 rpm
'B' type	50 Hz	3000/6000 rpm	1500/3000/6000 rpm
Spindles:—			
		Standard 35 mm dia.	Optional 1¼ ins. dia. 30 mm dia. 40 mm dia.

As our policy is to constantly improve design, the details given in this leaflet are not to be regarded as binding.

Certain illustrations show guarding removed for clarity.



Wadkin Leicester

Green Lane Works,
Leicester LE5 4PF
England.
Telephone: 0533 769111
Telex: 34646 Wadkin G
Fax: 0533 742310
A Division of Wadkin plc

We Know Woodworking!

Leaflet No. 1474/432
Printed in England.