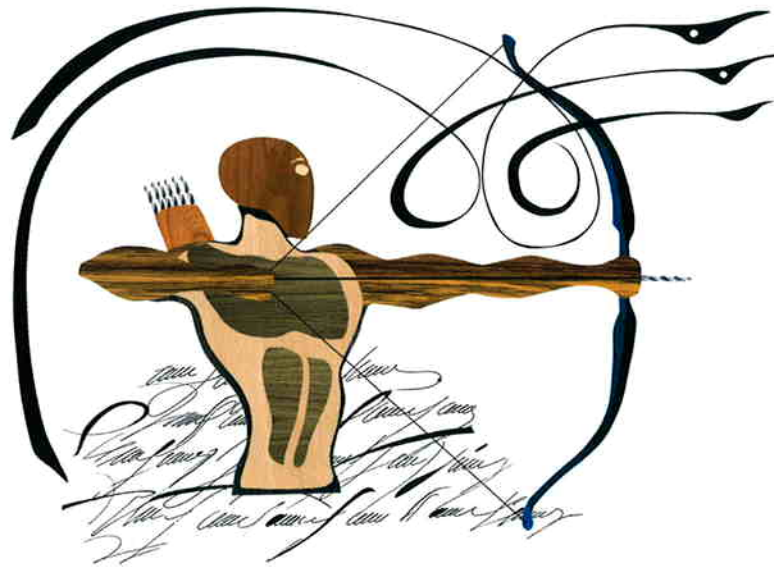


CNC-Processing Center BHX 050/055 Optimat






» Quality is the result of skill, motivation – and location«

Our CNC processing centers are already offering the technology of the future. Why? – Tradition.

»Made in Germany« is our motivation and our commitment. Customers around the world have come to expect the highest standards from this quality label.

And we meet those expectations.

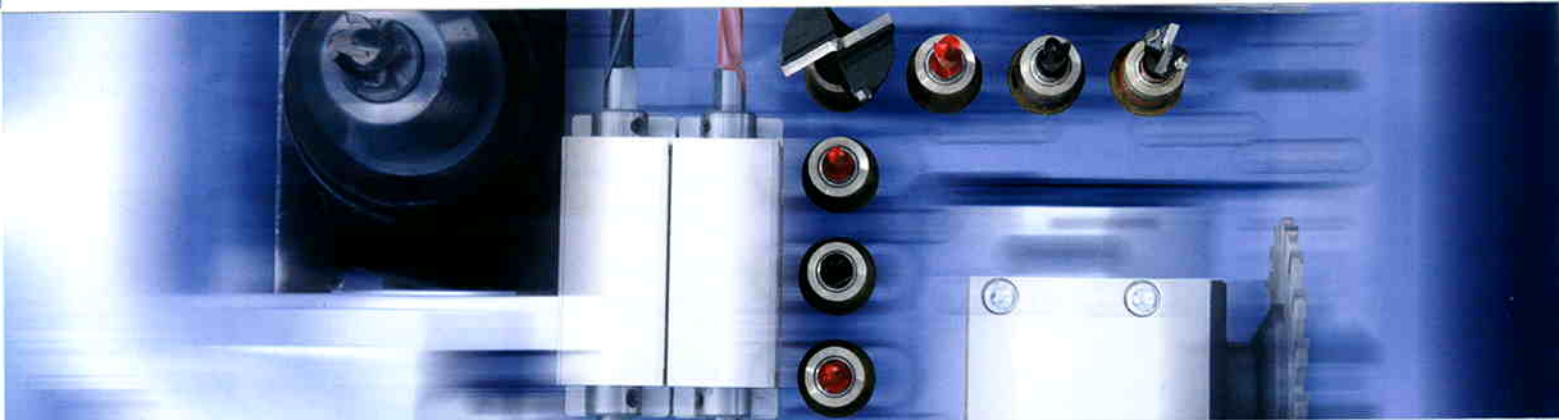


The smart allrounders for drilling, routing, grooving!

- Fast processing – saves time
- Takes up little room – saves space
- Simple operation – saves nerves
- Excellent processing quality – saves trouble
- Great value for money – saves money



BHX 050





»The market always cries for new developments.«

The only constant is the desire for quality.



power control PC85



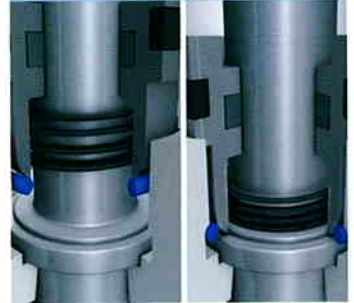
- 17" TFT-monitor
- Intel® Core™ 2 Duo Processor
- Modem
- USB frontside bus
- Ethernet connection 10/100 Mbit

High-Speed 7500



Spindles with 1500 - 7500 RPM incl. the patented quick change system

Automatic spindle clamping system



Patented system for exact drilling depth at any time with different materials



Fast workpiece thickness adjustment (manually)



Easy adjusting to different workpiece thicknesses. The required workpiece thickness can be controlled optically via monitor.

Workpiece clamping device



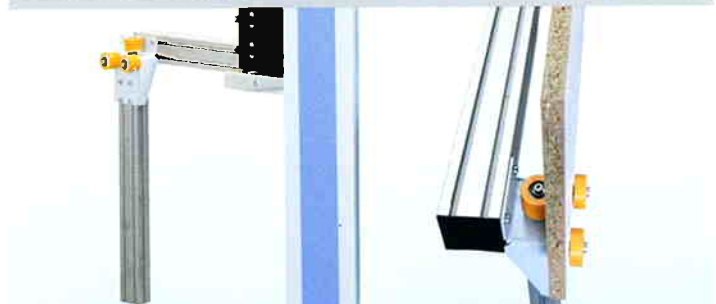
Easy adjustment of the clamping device (manually) to the workpiece thickness (clamping device stroke 6 mm). For differences in the workpiece thickness of up to 6 mm it is not necessary to manually adjust the clamping device.

Workpiece load- and workpiece removal area



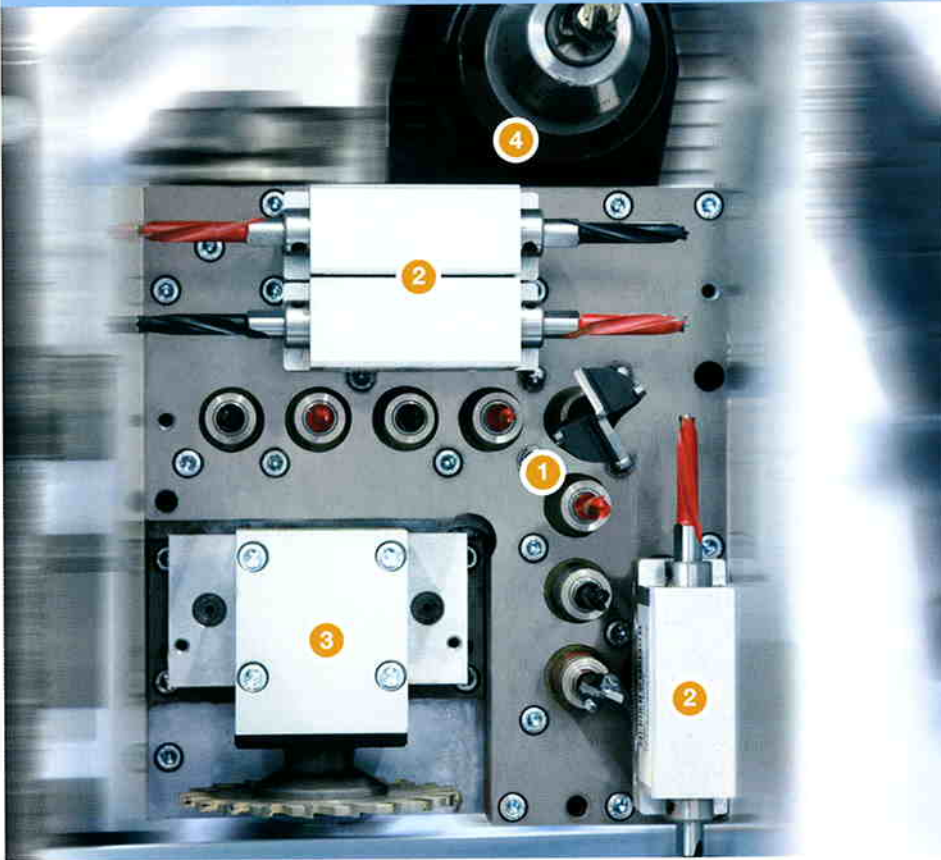
Mechanical support via roller conveyor in the loading- and removal area of the machine.

Option: Working length extension from 2500 mm to 3050 mm

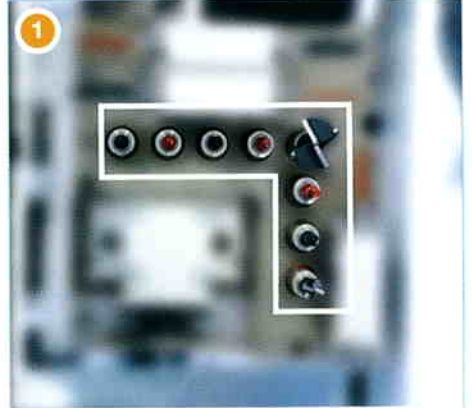


Extension of the working length to 3050 mm incl. roller conveyor

Configuration example

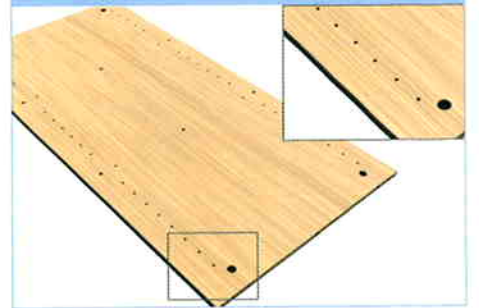


Standard

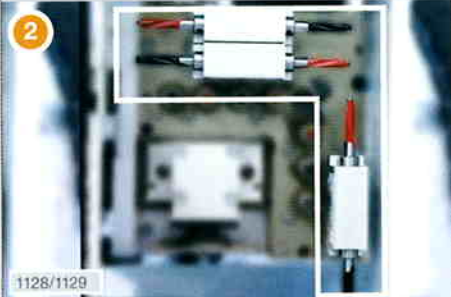


- 8 vertical drilling spindles, incl. quick-change drilling system

Processing example



Option



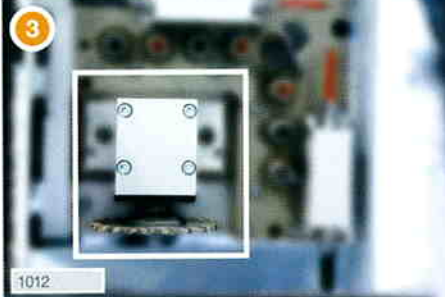
1128/1129

- 2 horizontal drilling spindles in X-Direction
- 1 horizontal drilling spindles in Y-Direction

Processing example



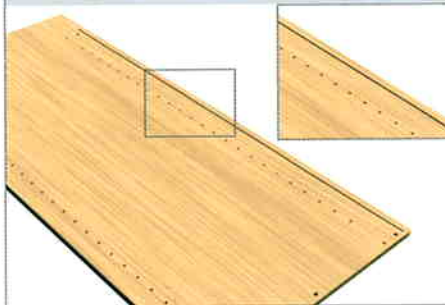
Option



1012

- Grooving saw in X-Direction, Ø 100 mm

Processing example



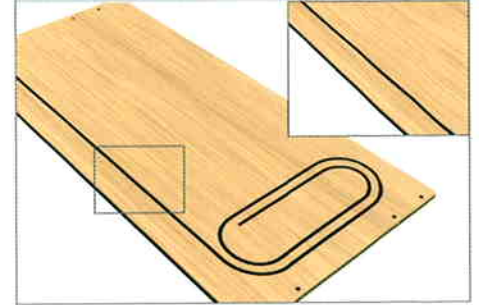
Option



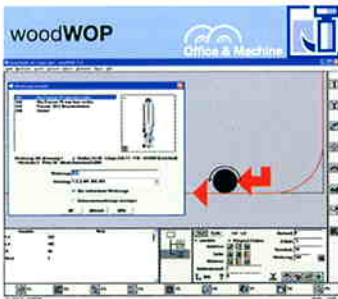
1029

- Router motor with hydraulic quick change system, 5 kW ETP 25

Processing example



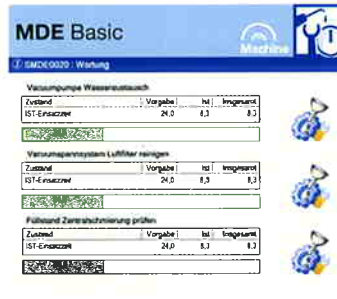
Software | Machine



- Modern software based on Windows®
- More than 16.000 installations worldwide



- Simple control of main machine functions through soft keys
- Graphical loading

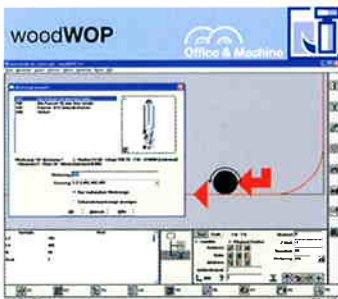


- Machine Data Recording - collecting and evaluating machine states via time meter and event meter



- Option: 3D CNC-Simulator**
- Simulates the processing in the order it is stored in the NC-program
 - Allows time calculation
 - Collision check of the vacuum cups

Software | Office



- Modern software based on Windows®
- More than 16.000 installations worldwide



- woodAssembler**
- To visualize woodWOP-programs (MPR) in 3D
 - Enables the construction of individual workpieces to finished objects



- woodDesign**
- Simple 3D construction of furniture including a parts list output and export of cut plans



- Option: woodWOP DXF Basic**
- Interface for CAD-Data Import
 - Basis to generate woodWOP programs





* A corresponding safety distance must be maintained in the in- and outfeed directions!

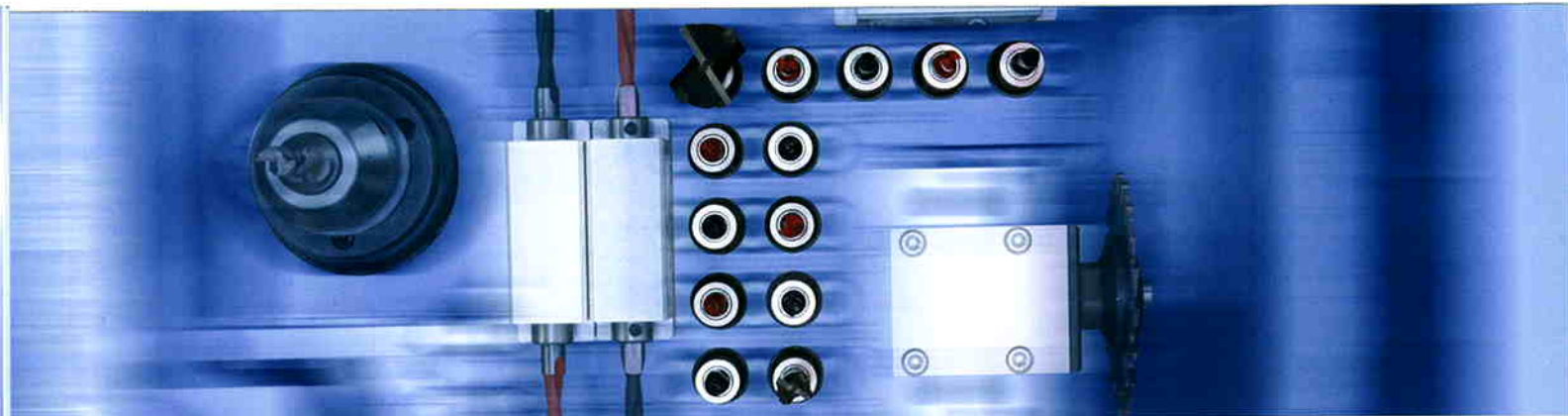
Dimensions in mm

BHX 050 Optimat

Workpiece dimensions L/W/T	mm	max. 2500 x 850 x 60 (optional: 3050) min. 200 x 70 x 12
Vector speed	m/min	(X - Y) 50 - (Z) 15
Compressed air required	bar	7
Compressed air connection	inch	R 1/2
Dust extraction port	mm	Ø 160
Dust extraction volume	m³/h	min. 2170
Total machine weight	kg	appr. 1450
Electrical power – total connection load	kW	11,5



BHX 055





»Losing time means losing to one's competitors«

Act quickly, react quickly, and retool quickly.



power control PC85



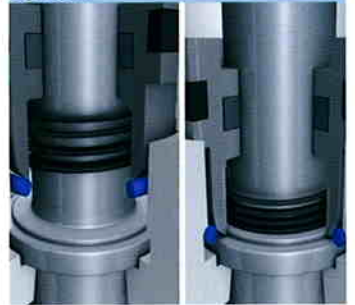
- 17" TFT-monitor
- Intel® Core™ 2 Duo Processor
- Modem
- USB frontside bus
- Ethernet connection 10/100 Mbit

High-Speed 7500



Spindles with 1500 - 7500 RPM incl. the patented quick change system

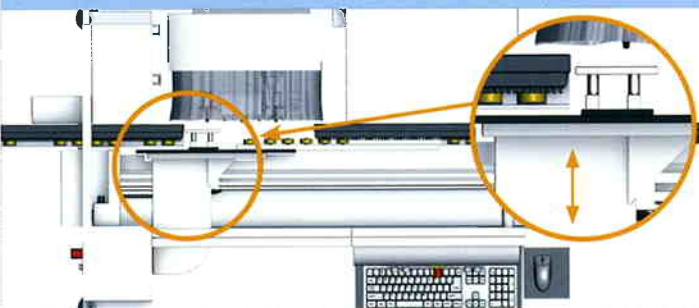
Automatic spindle clamping system



Patented system for exact drilling depth at any time with different materials



Automatic workpiece thickness adjustment



Automatic adjustment of the counter block to the material thickness according to the preselected data in woodWOP by the operator

Workpiece clamping device



Easy adjustment of the clamping device (manually) to the workpiece thickness (clamping device stroke 10 mm). For differences in the workpiece thickness of up to 10 mm it is not necessary to manually adjust the clamping device.

Working length extension



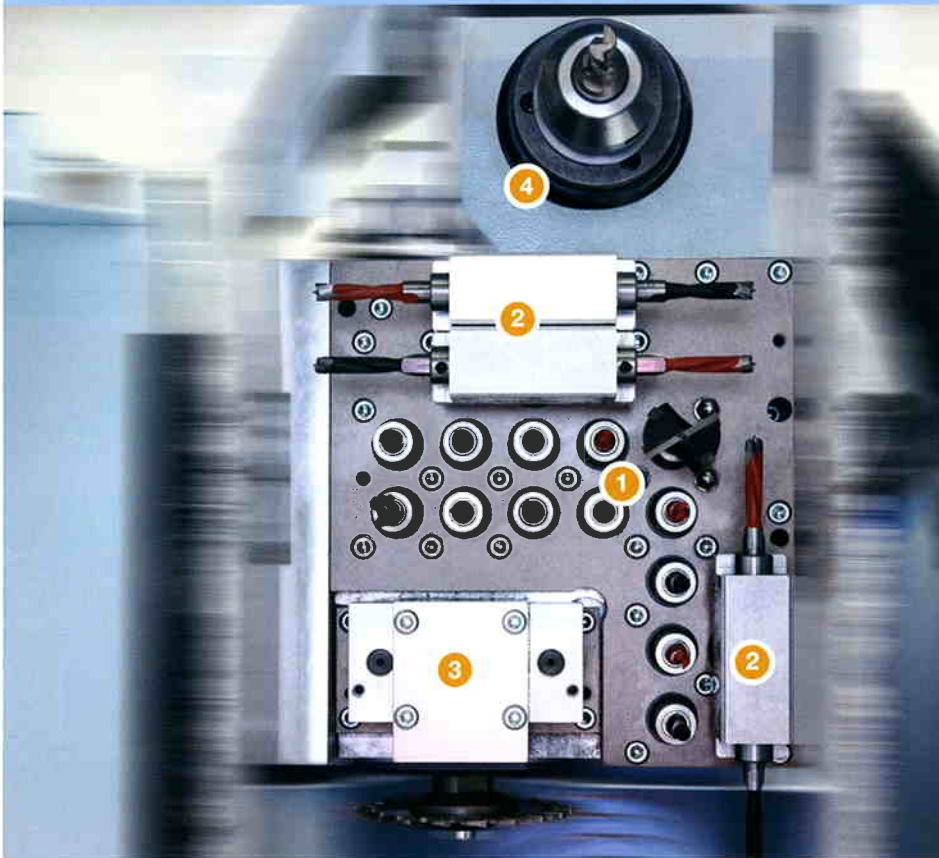
Extension of the working length to 3050 mm incl. roller conveyor

Workpiece load- and workpiece removal area

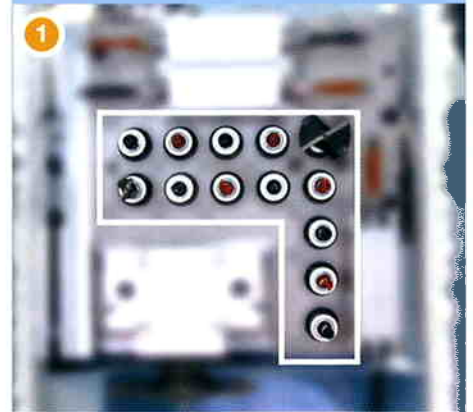


Mechanical support via roller conveyor in the loading- and removal area of the machine.

Configuration example

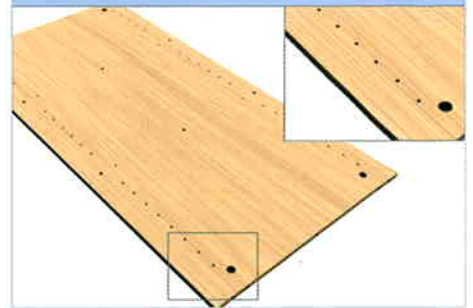


Standard

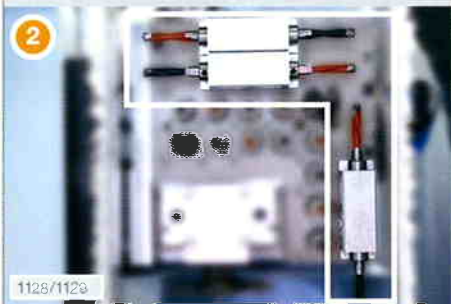


- 13 vertical drilling spindles, incl. quick change drilling system

Processing example



Option



- 2 horizontal drilling spindles in X-Direction
- 1 horizontal drilling spindles in Y-Direction

Processing example

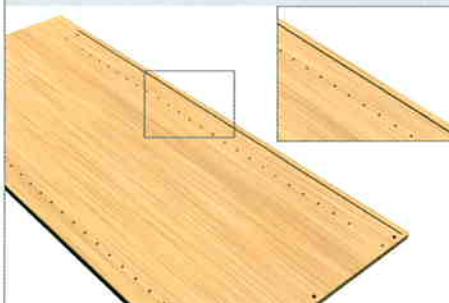


Option



- Grooving saw in X-Direction, Ø 100 mm

Processing example

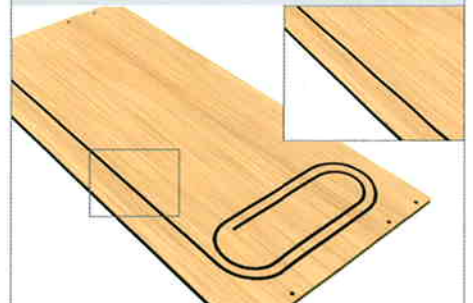


Option

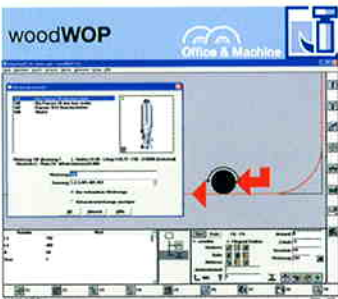


- Router motor with hydraulic quick change system, 5 kW ETP 25

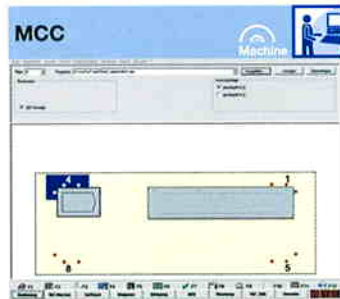
Processing example



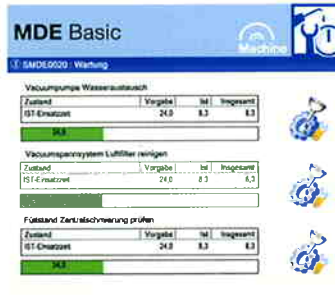
Software | Machine



- Modern software based on Windows®
- More than 16.000 installations worldwide



- Simple control of main machine functions through soft keys
- Graphical loading

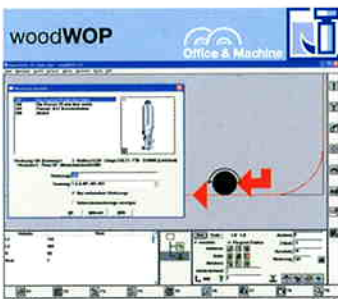


- Machine Data Recording - collecting and evaluating machine states via time meter and event meter



- Simulates the processing in the order it is stored in the NC-program
- Allows time calculation
- Collision check of the vacuum cups

Software | Office



- Modern software based on Windows®
- More than 16.000 installations worldwide



- To visualize woodWOP-programs (MPR) in 3D
- Enables the construction of individual workpieces to finished objects

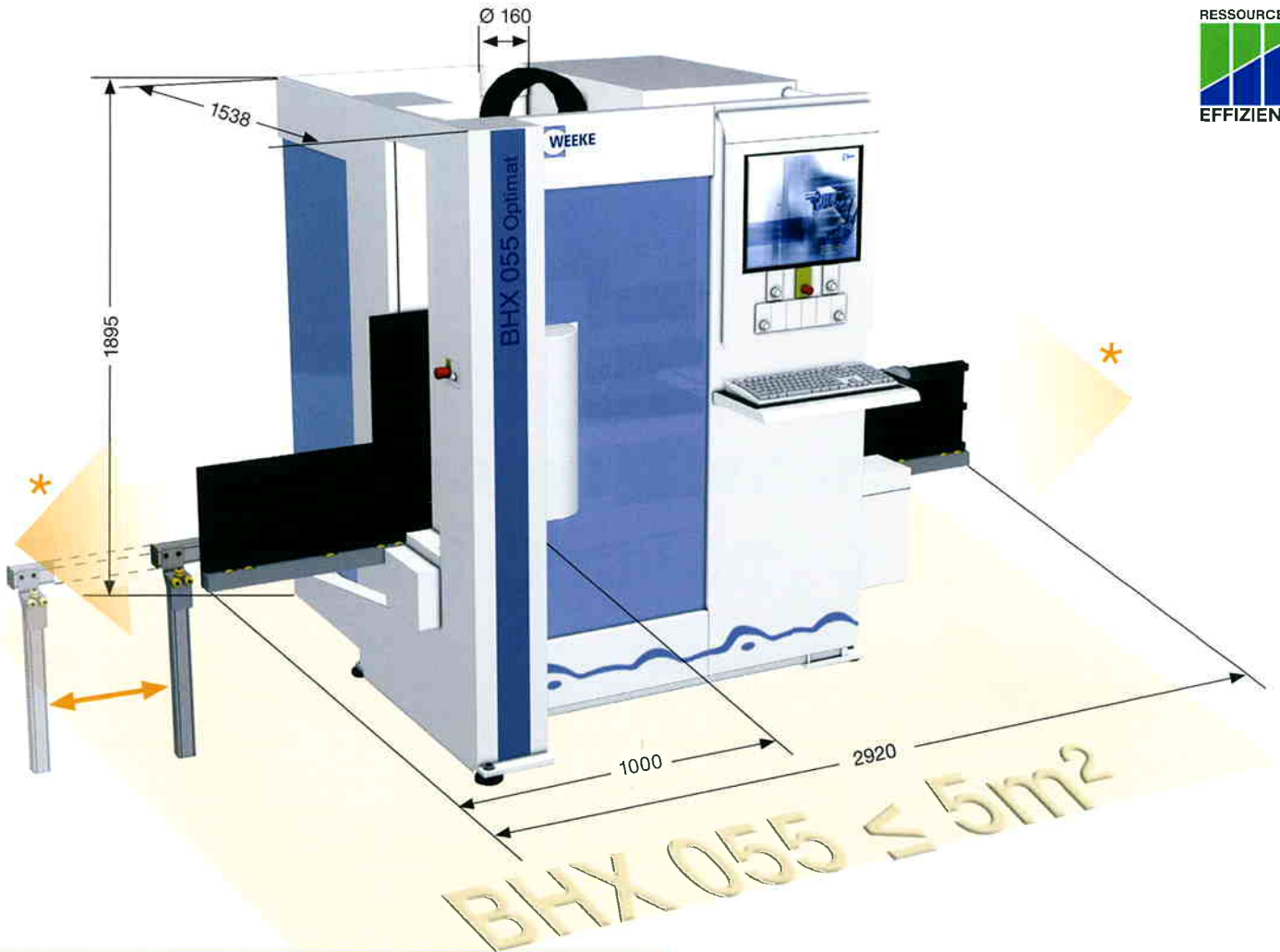


- Simple 3D construction of furniture including a parts list output and export of cut plans



- Interface for CAD-Data Import
- Basis to generate woodWOP programs





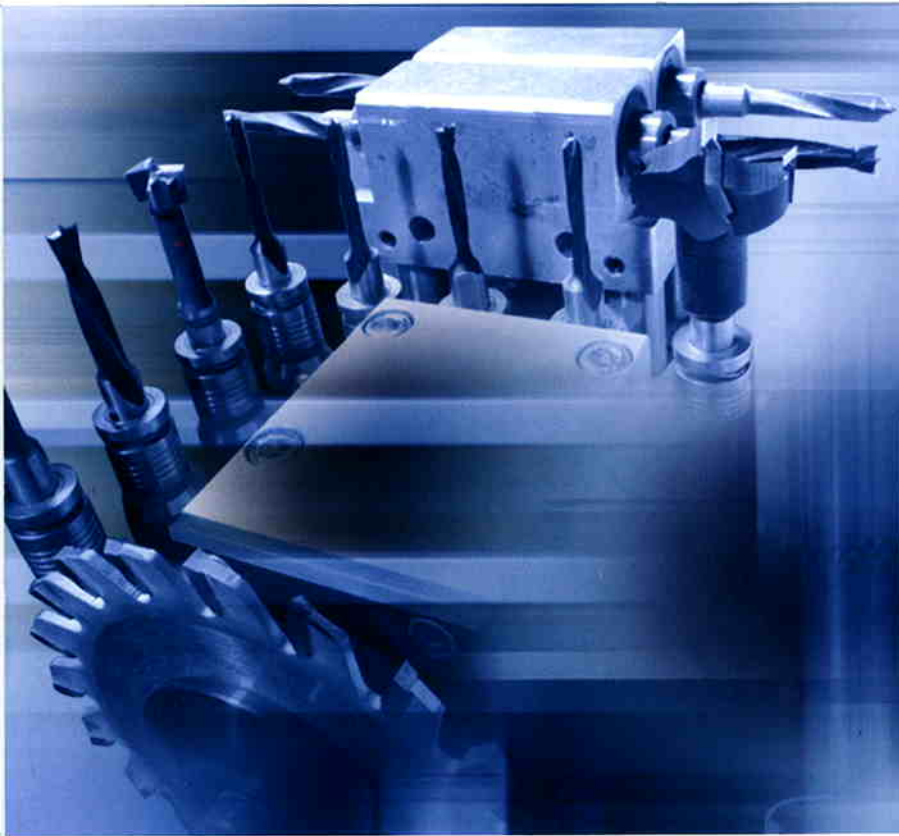
* A corresponding safety distance must be maintained in the in- and outfeed directions!

Dimensions in mm

BHX 055 Optimat

Workpiece dimensions L/W/T	mm	max. 3050 x 850 x 60 min. 200 x 70 x 12
Vector speed	m/min	(X - Y) 50 - (Z) 15
Compressed air required	bar	7
Compressed air connection	inch	R 1/2
Dust extraction port	mm	Ø 160
Dust extraction volume	m³/h	min. 2170
Total machine weight	kg	appr. 1450
Electrical power – total connection load	kW	11,5





Member of the HOMAG Group



Choose the Original
Choose Success!

Contact



WEEKE Bohrsysteme GmbH
Benzstrasse 10-16
33442 Herzebrock-Clarholz
GERMANY
Tel.: +49 5245 445-0
Fax: +49 5245 445-44 139
info@weeke.de – www.weeke.de

You may contact us - WORLDWIDE



- Teleservice possibility via basic internet-connection (TSN-possibility)
- Competent spare parts service
- WEEKE Communication:
Up-to-date information at all times:
www.weeke.com
- Any questions, new ideas, criticism & praise to:
info@weeke.de