

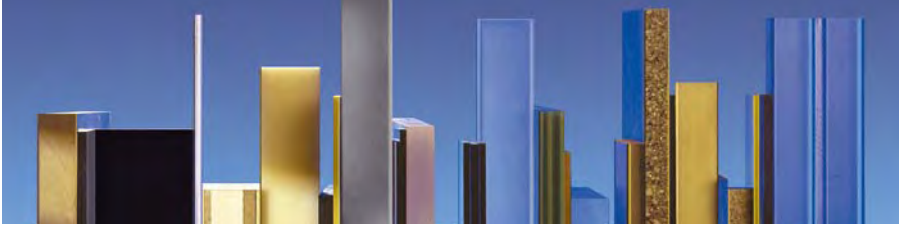
**Place your trust in perfection:
Processing centers from HOMAG**



For optimum results, our experience counts

Place your trust in the experience of the world market leader. For processing anything from plastics and aluminium to wood-based materials – with HOMAG you can rest assured. Over 1,000 successful processing center installations a year worldwide in the shipbuilding, automotive engineering, interior fittings, shop fitting and furniture production sectors are proof positive.





PLASTICS

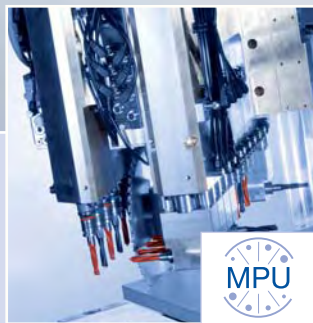


Maximum power and performance for individual applications

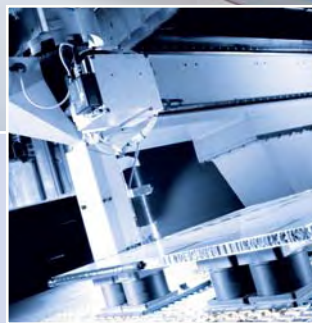
The B200 and B300 series processing centers are ideally suited for individual applications. For any manufacturer aiming to produce quality, reliable machines offering scope for flexible configuration are paramount. This flexibility is achieved with a wide modular range of trimming spindles, tool changers and drilling heads. And a broad selection of processing units which are also capable of simple retrofitting provide the ultimate investment security.



A variety of fluid-cooled working spindles with outputs ranging from 7.5 to 28 kW and variable speeds of 0 - 30,000 rpm guarantee top-quality processing tailored to wide-ranging different materials

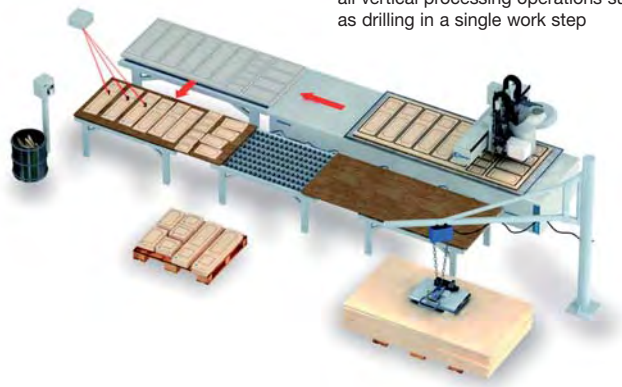


The Multi Processing Unit (MPU) permits not only the production of rows of holes, but also horizontal and vertical drilling with individual drills at any optional angle. Used in conjunction with the integrated saw and a powerful 6 kW trimming spindle (option), most workpieces can be processed without loss of time due to tool changing

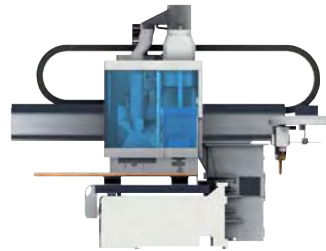


Edges are sealed using an extrusion unit, for example when working with aluminium honeycomb panels for vehicle production – no joints, high mechanical load capacity, unique scope for design

Panel dividing using the nesting technique permits right-angled or shaped components to be cut to size with cutting waste optimization, including all vertical processing operations such as drilling in a single work step



The compact, transparent safety enclosure allows oversized workpieces to extend out over the machine bed both lengthways and to the front

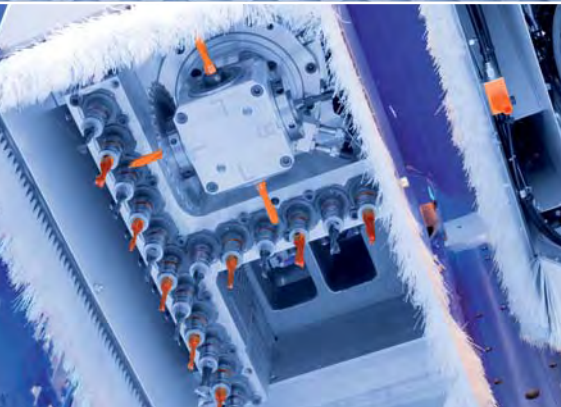


Precision

An aluminium grid-type table with dovetail guides guarantees precise mechanical clamping element fixture in any optional position

Processing accuracy

Universal clamping elements permit precise processing of wide-ranging different products (such as Korean washbasin panels)



Extreme output

The HIGH-SPEED drilling head operating at up to 7,500 revs per minute guarantees fast, precise processing even with small tool diameters. The patented clamping system offers maximum stability and safety – even when drilling into the hardest materials. The perfect answer for Multiplex or Trespa processing. The presented quick-change system permits rapid drill changeover without the use of tools

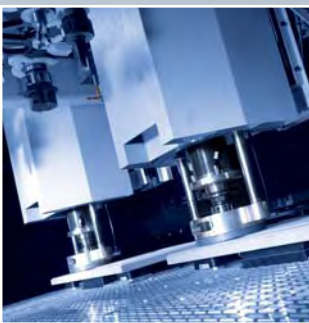
Short set-up times

Several high-speed tool changers providing generously dimensioned tool slots permit extremely short chip-to-chip times, resulting in significantly shorter tool changes. They also provide plenty of space for a range of large-scale units and tools (up to 72 in total). Optionally equipped with electronic tool recognition

The patented unit interface designed to allow the transfer of compressed air and fluids to exchangeable units ensures not only efficient cooling and lubrication but also the reliable removal of chips

These gantry processing centers are your green light for unlimited success

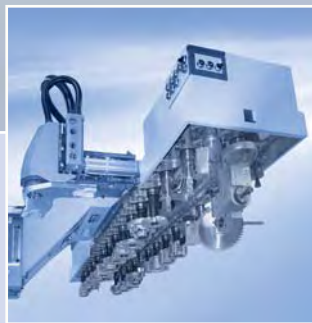
The B600 and B700 and series machines permit two independent workpieces to be processed simultaneously, with scope for up to four processing units with trimming spindle and drilling head.



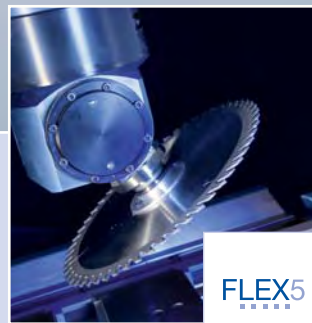
Tracing

The new SENSO-FLEX system offers you outstanding benefits:

- Perfect workpiece quality: The traced spindle compensates unevenness and tolerances
- Full flexibility through capacity for tracing with different tools



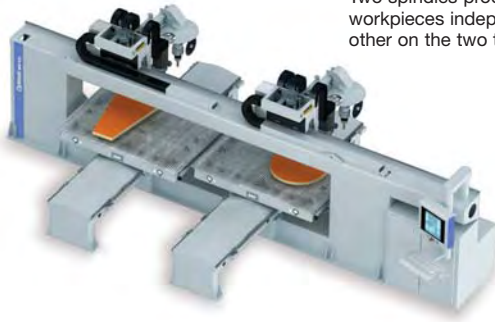
Up to two chain changers with 72 tools each enhance flexibility coupled with a low chip-to-chip time of around 7-8 seconds. Units and tools with diameters of up to 280 mm can be inserted with optimum flexibility



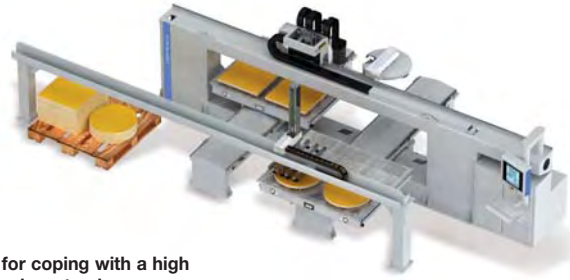
A comprehensive range of modular units extends the functional capability, for instance the FLEX5 unit for five-axis processing:

- Shift cuts fit precisely right from the start
- Holes drilled at "any" angle

Independent processing
Two spindles process different workpieces independently of each other on the two tables (option)



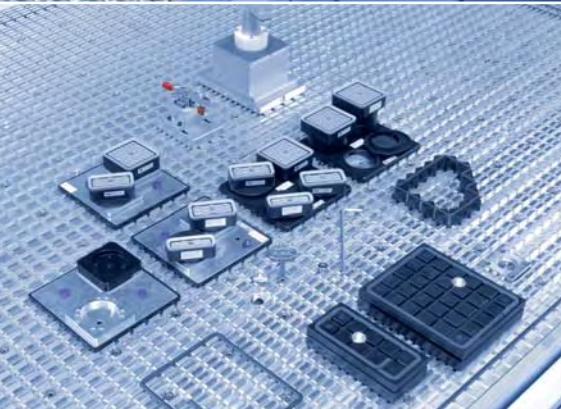
Production cell
The integrated feeder TBP 370 turns the processing center into a production cell – without additional control and programming input



Console tables – Ideal for coping with a high incidence of hogging and waste pieces
Manual set-up facility or automatic set-up in the AP (Automatic Positioning) variant

Five-axis processing
The DRIVE5+ five-axis spindle offers exciting new design scope plus a wide range of options for the future and consequently provides the ultimate investment security. A double pack is also on offer for high performance requirements

- Fully automatic table set-up, including precisely positionable clamping elements
- Facility for resetting the work table during tool changeover
- Significant reduction of downtimes
- High output and efficiency even for batch size 1
- Facility for upgrading to a low-manned production cell
- Permits the use of a variety of different clamping elements



Flexible
A comprehensive selection of clamping elements for precise, flexible adjustment of the vacuum suction surface to the workpiece contours

Versatile
A variety of add-on supplementary units is available for functions such as screwing connectors into lightweight panels

The fast track to your goal: the right software

The HOMAG power control system PC 85 is an open-ended control system, offering extreme operating simplicity for highly flexible machines. It allows the implementation of several different processing modes such as alternating or single processing in conjunction with high speed changeover, and comes complete with an integrated job list control system. Which adds up to efficient, streamlined production – right from batch size 1.

Production engineering station – program at your leisure in the office

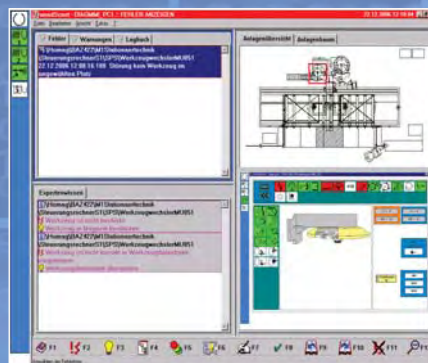
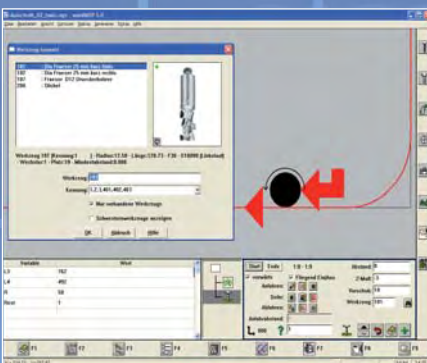
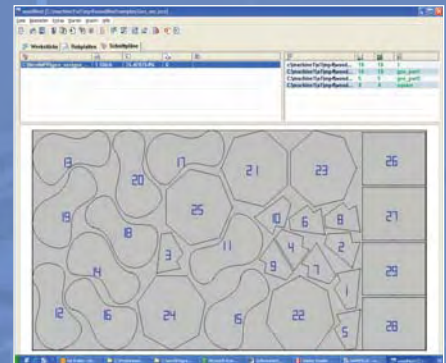
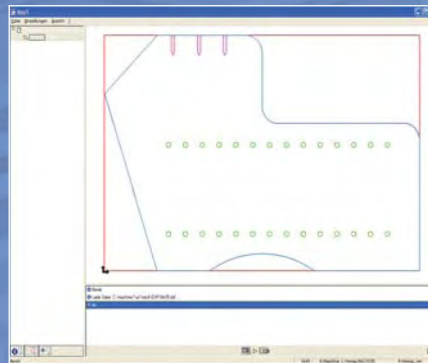
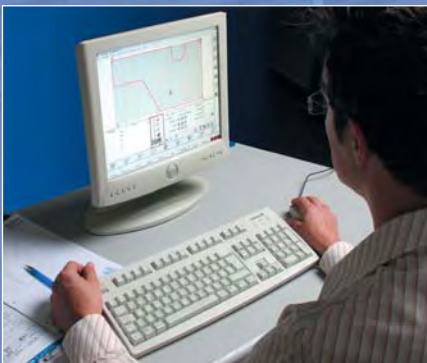
- Carry on programming while the machine is already working through completed programs
- Data transmission by means of a standard USB port at the machine or via a network link directly from the office
- Data transfer through interfaces to wide-ranging ERP software systems and trade-specific software packages

DXF import – the CAD interface

- For transfer of workpiece geometries and defined processing operations
- Data transfer from CAD systems in the international DXF format

Nesting – reduces cutting waste

- Nesting software for automatic interleaving of workpieces on a raw panel
- The nesting process combines cutting to size and finish processing operations
- Reduction of material costs and total processing times



Efficient due to high-speed programming

- Ultra high-speed and simple programming – using wide selection of macros
- Easy operation of macros for five-axis programming as an adjusting axis
- Automatic calculation of suction cup and console positions
- Graphic tool selection with integrated link to the tool database

Help in your language

- Optional efficient diagnostic system
- Graphic display of the fault location in the machine
- Clearly understandable plain text messages in different languages
- Learning system through the assignment of root causes and actions (expert knowledge)

Tool service life determination – for an absolute overview

- Module for monitoring and documenting tool deployment
- Exchanging tools in good time enhances your machine's availability and workpiece quality
- Cost reduction due to optimum tool deployment planning and tool service life comparison

Your guarantee of success: The HOMAG service package

No matter which machine or which system you buy from us – you are investing in productivity and sure success in the long term. This is guaranteed not only by our engineering excellence but also by our seamless all-round support package which leaves you free to concentrate on what you do best and keeps your production up and running. The result: enhanced productivity and a sharper competitive edge. The bottom line: You save not only precious time but hard cash too.

Success through perfect planning

- We provide competent advisory support: right from day one
- You find the best possible, most economical solution to your requirements

Success through custom tailored financing

- We offer a range of attractive financing possibilities
- You leave your capital base intact

Success through a fast start up

- We take care of installation and commissioning
- You can get your production up and running straight away

Success through competent operation

- We train your staff and bring them up to speed
- You realize your machine's full potential

Success through continuous support

- We provide in-process support and machine optimization
- You gain from maximum productivity

Success through reliable function

- We offer preventive maintenance by video/remote diagnosis
- You have the assurance of absolute production reliability

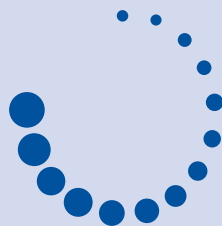
Success through efficient support

- We ensure a fast, reliable repair and spare parts service
- You avoid unnecessary production standstill

Success on every continent

- We guarantee the worldwide availability of our services
- You are in capable hands – wherever you need us

HOMAG's **lifeline I** service ensures optimum availability and economical production – over the entire life cycle of your machine.

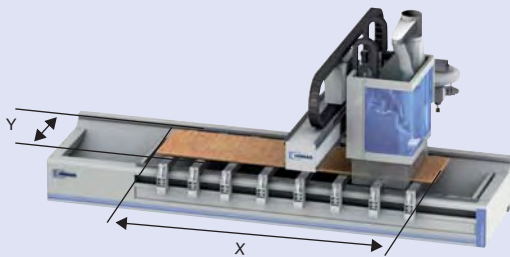


lifeline I service

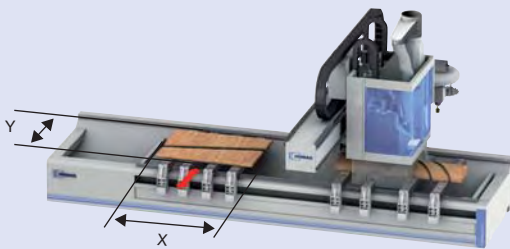
HOMAG Quality is evident in every detail

Working dimensions [mm (inches)]		BOF 211	BOF 311
X = Max. processing width			
Single processing (Tool diameter 25 mm)	Model 30	3,050 (120.1")	3,050 (120.1")
	Model 40	4,000 (157.5")	4,000 (157.5")
	Model 50	5,200 (204.7")	5,200 (204.7")
	Model 60	6,000 (236.2")	6,000 (236.2")
	Model 72	7,200 (283.5")	7,200 (283.5")
Alternating processing (Tool diameter 25 mm)	Model 30	900 (35.4")	900 (35.4")
	Model 40	1,375 (54.1")	1,375 (54.1")
	Model 50	1,975 (77.8")	1,975 (77.8")
	Model 60	2,375 (93.5")	2,375 (93.5")
	Model 72	2,975 (117.1")	2,975 (117.1")
Y = Processing depths			
Trimming (tool diameter 25 mm)		1,550 (61.0")	1,850 (72.8")
Trimming with auxiliary spindle (tool diameter 25 mm)		2,140 (84.3")	2,440 (96.1")
Z = Processing height			
Trimming (tool length 230 mm)		300 (11.8")	300 (11.8")

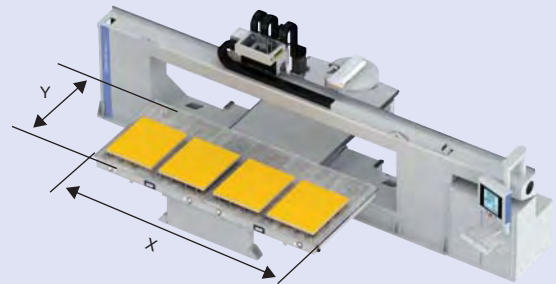
Working dimen.* [mm (inches)]	BOF 611		BOF 711	
X = Max. processing width				
Single processing (Tool diameter 25 mm)	Model 34/13 Model 34/34	3,743 (147.4")	Model 42/16 Model 42/18	4,533 (178.5")
	Model 21/31 Model 21/37	2,100 (82.7")	Model 42/22 Model 58/16	6,203 (244.2")
			Model 58/18 Model 58/22	
Alternating processing (Tool diameter 25 mm)	Model 34/13 Model 34/34	1,833 (72.2")	Model 42/16 Model 42/18	1,883 (74.1")
	Model 21/31 Model 21/37	2,100 (82.7")	Model 42/22 Model 58/16	3,050 (120.1")
			Model 58/18 Model 58/22	
Y = Processing depths				
Single processing (Tool diameter 25 mm)	Model 34/13 Model 34/34	1,550 (61.0")	Model 42/16 Model 42/18	1,950 (76.8")
	Model 21/31 Model 21/37	3,100 (122.0")	Model 42/22 Model 58/16	2,550 (100.4")
		3,713 (145.7")	Model 58/18 Model 58/22	2,200 (86.6")
				2,550 (100.4")
Z = Processing height				
Trimming (tool length 230 mm)		300 (11.8")		300 (11.8") 500 (19.7")



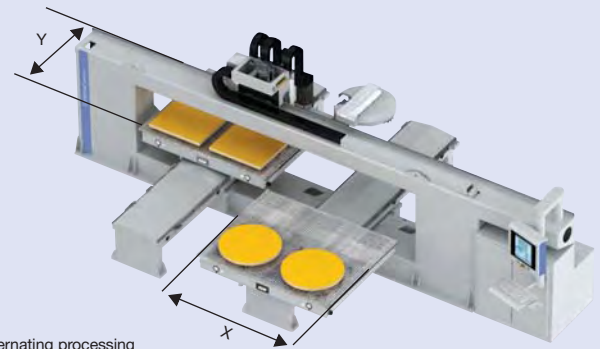
Single processing



Alternating processing



Single processing



Alternating processing

Photos and specifications are not binding in every detail. We expressly reserve the right to make changes in the interests of further development.

*In processing centres with several processing units, deviating working and set-up dimensions apply

A success story for our customers

Since it was established in 1960, HOMAG AG has grown to become a company group employing a workforce of over 4,000. This success story is built on the solid foundation of close cooperation with our customers in the development of new products, culminating in many momentous milestones in the field of production engineering over the course of the past 40 years. You too can benefit from this rich fund of expertise.

Excerpt from our reference list:



Plastics processing (A)



Bus construction (D)



Shipbuilding (D)



Acrylic processing (CH)



Caravan building (D)



Plastics processing (D)



Shipbuilding (NL)



Aircraft construction (A)



Mould making (A)



Automotive supply industry (D)



Rail vehicle fitting (D)



Shipbuilding (D)



Be on the safe side with HOMAG

- An investment in a new machine or plant should not be an experiment. Opt for a competent, experienced and reliable partner you can trust – opt for HOMAG
- A unique fund of expertise and experience gathered over almost 50 years
- Production of over 1,000 processing centers a year throughout the HOMAG Group
- A motivated workforce of over 4,000 working to produce the legendary standard of HOMAG quality at 12 locations

PLASTICS



A member of the HOMAG Group



HOMAG Holzbearbeitungssysteme AG

Homagstraße 3-5

72296 SCHOPFLOCH

GERMANY

Tel. +49 7443 13-0

Fax +49 7443 13-2300

info@homag.de

www.homag.com