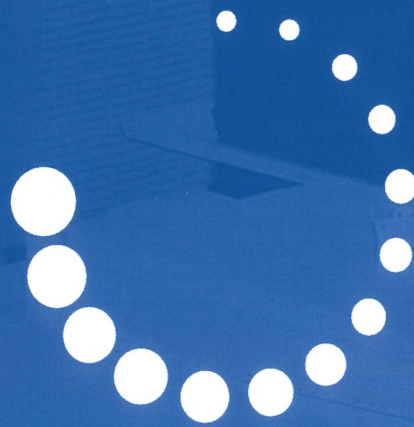
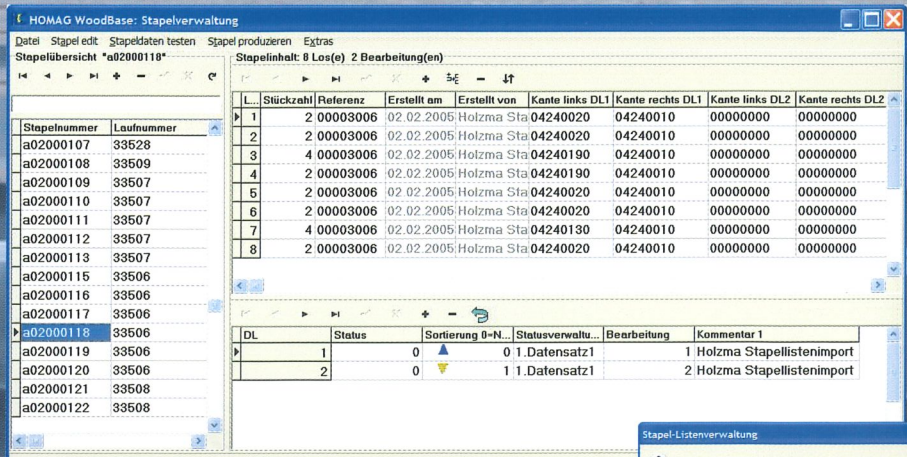


**woodBase stack management**  
**Economical, clearly manageable production**



**lifeline | service**



## woodBase stack management - faster, more reliable, more productive

### The requirements

When it comes to the efficient production of customer-specific jobs in small batch sizes on highly flexible plants, organization of the machine periphery becomes a highly decisive factor.

Handling systems for stacks of workpieces can be automated by the provision of stack characteristics and stack content-related data.

### The solution

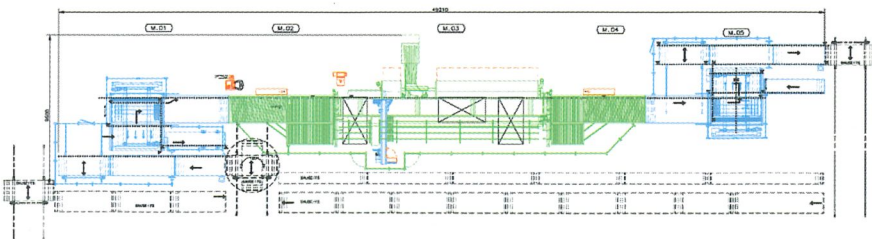
Developed specifically to address the requirements of the furniture industry, the woodBase stack management system paves the way for a significant increase in productivity. Foreseeable interruptions due to missing information or data are detected early on. Workpieces which are not individually labelled can be reliably monitored over multiple processing stages, even across several different plants.

### The software

Even using the basic version of the woodBase stack management system, stacks can be quickly and reliably entered on-screen at the machine control system. The stack contents are clearly displayed in table form. Every stack automatically indicates its current status. Manual changes to stack contents, for example piece numbers or sequence in the stack can be additionally and simply implemented from any woodBase workstation. With the look and feel of Windows, woodBase applications require minimal familiarization time and offer outstanding user convenience.

Editing functions available include block-by-block copying, deletion and displacement within a stack, and also between different stacks. The automatic execution of cyclical work processes such as deletion of old stack data reduces the day-to-day workload of operating staff. Stacks are selected for production directly at the stack contents list, with filtration functions permitting fast access to the required stack.

Integrated test routines reliably check the availability of all the information required for correct processing operations. This helps increase operating reliability and reduces standstill periods.





Stapel-Erstmessung

Stapelnummer: 402000118

Stapelnummer:

Laufnummer: 33506



402000118

Stapelanzustanz: Holzma Stapelsteinimport

Erstellt von: 02.02.2005 11:23:07

Erstellt am:

Länge: 8

DL: 2

LIL-Frei: 2

Stapelinhalt

Stapelstückzahl	Referenz	Erstellt am	Erstellt von	Kante links DL1	Kante rechts DL1	Kante links DL2	Kante rechts DL2
1	2	00003006	02.02.2005 11:23:0	Holzma Stapelste	04240020	04240010	00000000
2	2	00003006	02.02.2005 11:23:0	Holzma Stapelste	04240020	04240010	00000000
3	4	00003006	02.02.2005 11:23:0	Holzma Stapelste	04240100	04240010	00000000
4	2	00003006	02.02.2005 11:23:0	Holzma Stapelste	04240100	04240010	00000000
5	2	00003006	02.02.2005 11:23:0	Holzma Stapelste	04240020	04240010	00000000
6	2	00003006	02.02.2005 11:23:0	Holzma Stapelste	04240020	04240010	00000000
7	4	00003006	02.02.2005 11:23:0	Holzma Stapelste	04240130	04240010	00000000
8	2	00003006	02.02.2005 11:23:1	Holzma Stapelste	04240020	04240010	00000000

Stapel-Durchlaufverwaltung

DL	Status	Sortierung 0	Normal 1	Stärkeverhältnisdlogik	Boardsortung	Komponente 1
1	0	0	1	Datensatz1	1	Holzma Stapelsteinimport
2	0	1	1	Datensatz1	2	Holzma Stapelsteinimport

HOMAG Dring - woodBase Stapelsteinverwaltung, Kreis CAS - printed 15.02.2005, 16:04



### The stack construction plan

Stacks which have once been registered are continuously updated online by feedback from the production line control system woodLine. Information gained in this way about production progress of a stack and consequently about workpieces contained in the stack is available for use at any time. Depending on requirements, this information is made available either in electronic form with optimum network transparency, or as an automatically generated stack accompanying ticket. The woodBase stack management system automatically generates a precise stack construction plan for the subsequent production processes. This provides an inestimable benefit, particularly when working with small batch sizes.

### Options

#### Calculation of parameters

If required, individual stack parameters can be automatically calculated. This function allows parameters such as stack height, max. length and width in the stack, last batch in the stack etc. to be automatically determined by evaluation of all the characteristics assigned to a stack.

#### Additional interfaces

Open-ended interfaces permit the automatic adoption of stack data, allowing the information flow to be fully automated.

BARGSTEDT woodStore / woodSort

HOMAG woodLine

HOLZMA Cutmatic

SCHULER MOS

External production management systems  
ERP/PPS

#### Barcode stack identification

An optional barcode-based stack identification function is additionally available. This allows the entire stack contents to be automatically adopted in the woodLine production list, and prevents interruptions due to input errors.

### Mobile stack registration

The optional use of mobile radio terminals with integrated intelligence permits manual bar code-aided registration of a workpiece stack wherever the automatic adoption of data is not possible.

Functions of the radio terminal:

- Creating new stack list
- Attaching additional stack items
- Activates printouts of stack lists
- Entry of stacks in the woodLine production list
- Display of workpiece part and edging information from woodBase

### Upgrades for PC in the production engineering department

System requirements:

- Windows operating system 2000 or XP
- Screen resolution at least 1024 x 768
- Network connection to the plant with woodLine
- woodBase reference number management



A member of the HOMAG Group



**HOMAG Holzbearbeitungssysteme AG**  
Homagstraße 3-5  
72296 SCHOPFLOCH  
GERMANY

Tel.: +49 7443 13-0  
Fax: +49 7443 13-2300  
E-Mail: [info@homag.de](mailto:info@homag.de)  
Internet: [www.homag.com](http://www.homag.com)