

# WIDE BELT **Sander**

*With 75" Long  
Sanding Belt &  
Heavier Construction*



**920RK**



- HOLYTEK Sanders - Built with Quality and Economy in Mind.
- Compact, Reliable and Versatile.
- Convenient and Ruggedly Constructed Sanders.

**HOLYTEK**



# HOLYTEK

## The New Sander Series

For easy, reliable and economic sanding. Good for solid wood and narrow piece veneer sanding.

### EXCELLENT STANDARD FEATURES:

- All electrical controls conveniently grouped. Amp meters on each head indicate the sanding load.
- Variable feed speed via a powerful, independent feed motor. Optimum productivity and finish can always be achieved.
- Safety is guaranteed by the large emergency stop button on the front panel and emergency stop bar at the front of the machine.
- Disc brakes stop the heads in seconds.
- Powered table positioning via a separate elevation motor.
- Belt oscillation is electronic - saving expensive compressed air. No noise and smoother oscillation too! ('Invisible Beam' system is not affected by dust.)
- Higher belt speeds for faster stock removal.
- Pneumatic belt tensioning ensures reliability and fast, simple belt changes.
- Spiral grooved natural rubber contact roller keeps belts cool.
- Efficient dust extraction and robust construction.
- Large diameter rubber contact drum and combination contact drum.
- Digital readout thickness setting and air-jet cleaner with timer control available upon request.
- Longer 75" (1,095 mm.) sanding belt for better sanding results.

**1' Single Belt**



**305K**

**2' Single Belt  
(60" Length)**



**610KS**

Digital readout thickness setting is optional.

**2' Single Belt  
(75" Length)**



**610K**

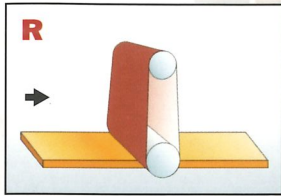
**2' Double Belt**



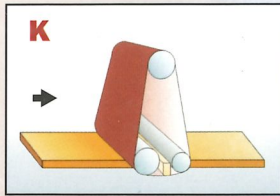
**610RK**



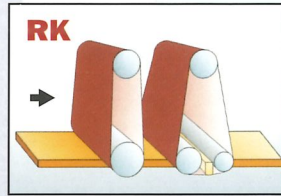
# INNOVATIVE SANDING HEAD CONFIGURATION



Contact drum head



Combination head



Contact drum head +  
Combination head



K Type



RK Type

## 3' Single Belt



920K

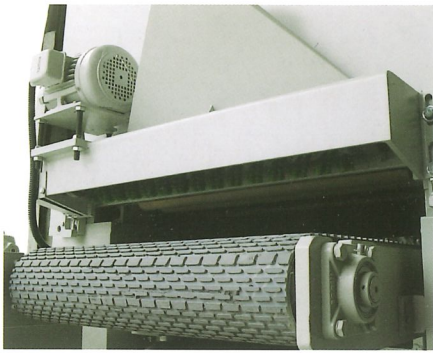
Emergency stop "bar" switch is standard for all series!

## 3' & 3.5' Double Belt



920RK/1070RK



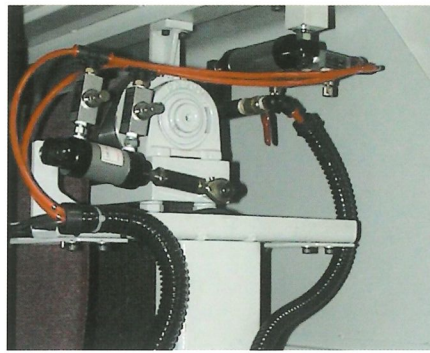


**PANEL CLEANING BRUSH ROLLER (Optional)**

Built at the outfeed end of the machine, this panel cleaning brush roller cleans powder off the sanded panel.

**HEAVY THICKNESS CONVEYOR BELT (Optional)**

Heavy-duty conveyor belt has thickness of 8-10mm.



**ABRASIVE BELT AIR-JET CLEANER DEVICE W/TIMER CONTROL (Optional)**

The device cleans the sanding belt - either continuously or by timer control.



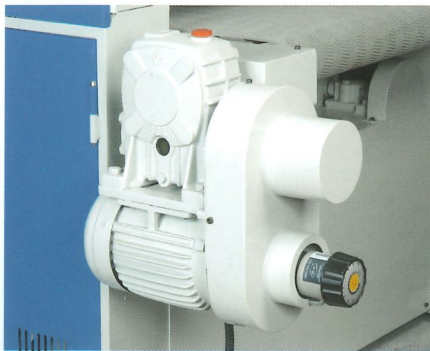
**CENTRALIZED CONTROL PANEL AND AMP METERS FOR SANDING BELT OVERLOAD**

Very easy control panel with Emergency Stop switch.



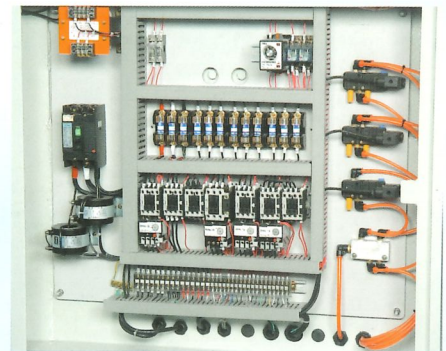
**SANDING BELT OSCILLATION MECHANISM**

A photocell sensor is utilized for controlling the sanding belt tracking. An air cylinder is applied for conveniently actuating the sanding belt tension.



**VARIABLE FEED SPEED**

Feed speed is easily regulated by turning a knob and is varied utilizing a speed pulley device. As the feed speed range is very wide, this sander is suitable for all types of wood.



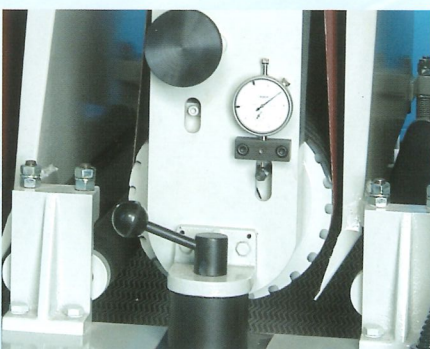
**DEPENDABLE CONTROL**

The entire motion system's electronic control circuits have CE certified components assuring a long service life.



**MICRO-COMPUTER DIGITAL THICKNESS CONTROL (Optional)**

A digital thickness controller is applied for the conveyor table position providing extremely accurate control. Additionally, thicknesses can be preset for added convenience.



**SANDING BELT QUICK CHANGE DEVICE**

With 200 mm. diameter large contact drum (R head) and micro-adjustment gauge for elevation is standard.



**PNEUMATIC DISC BRAKE**

The motor has a disc braking system which enables the belt to stop in seconds.



## OPTIONAL:

- Digital readout thickness setting.
- Air-jet cleaner by timer control.
- Heavy-duty thickness conveyor.
- Brushing roller.

## SPECIFICATIONS:

MODEL	305K	610KS	610K	610RK
Working Width	305 mm (12")	610 mm (24")	610mm (24")	610 mm (24")
Working Height	125 mm	125 mm	125 mm	125 mm
Sanding Belt Motor (hp)	7.5 HP	10 HP	10 HP	15,10 HP
Feed Motor (hp)	1 HP	1 HP	1 HP	2 HP
Table Hoist motor (hp)*	0.25 x 6p	0.25 x 6p	0.25 x 6p	0.25 x 6p
Feed Speeds	4 ~ 14 M/min	4 ~ 14 M/min	4 ~ 14 M/min	5 ~ 17 M/min
Sanding Belt Dimension	13" x 75"	25" x 60"	25" x 75"	25" x 75"
Compressed Air Required	6 kg/cm <sup>2</sup>	6 kg/cm <sup>2</sup>	6 kg/cm <sup>2</sup>	6 kg/cm <sup>2</sup>
Exhaust Volume Requirement	2500 M <sup>3</sup> /Hr	2600 M <sup>3</sup> /Hr	2600 M <sup>3</sup> /Hr	3500 M <sup>3</sup> /Hr
Net Weight	650 kg	800 kg	850 kg	1550 kg
Gross Weight	730 kg	870 kg	920 kg	1650 kg
Dimensions (L x W x H)	1300x1090x1850 mm	1300x1180x1660 mm	1300x1180x1860 mm	1770x1230x1840 mm
Packing Size (L x W x H)	1450x1240x2050 mm	1450x1330x1860 mm	1450x1330x2060 mm	1920x1380x2040 mm

MODEL	920K	920RK	1070K	1070RK
Working Width	915 mm (36")	915 mm (36")	1070mm (42")	1070 mm (42")
Working Height	125 mm	125 mm	125 mm	125 mm
Sanding Belt Motor (hp)	15 HP	20,15 HP	20 HP	25, 20 HP
Feed Motor (hp)	1 HP	2 HP	2 HP	2 HP
Table Hoist motor (hp)	0.25 x 6p	0.25 x 6p	0.25 x 6p	0.25 x 6p
Feed Speeds	5 ~ 17 M/min	5 ~ 17 M/min	5 ~ 17 M/min	5 ~ 17 M/min
Sanding Belt Dimension	37" x 75"	37" x 75"	43" x 75"	43" x 75"
Compressed Air Required	6 kg/cm <sup>2</sup>	6 kg/cm <sup>2</sup>	6 kg/cm <sup>2</sup>	6 kg/cm <sup>2</sup>
Exhaust Volume Requirement	3000 M <sup>3</sup> /Hr	4200 M <sup>3</sup> /Hr	3800 M <sup>3</sup> /Hr	7000 M <sup>3</sup> /Hr
Net Weight	1550 kg	2100 kg	1750 kg	2400 kg
Gross Weight	1650 kg	2220 kg	1870 kg	2550 kg
Dimensions (L x W x H)	1410x1540x1920 mm	1800x1590x1920 mm	1410x1740x1920 mm	1800x1740x1920 mm
Packing Size (L x W x H)	1560x1690x2130 mm	1950x1740x2130 mm	1560x1890x2140 mm	1950x1890x2140 mm

\* Specifications and design characteristics subject to change without prior notice.

# HOLYTEK

**HOLYTEK INDUSTRIAL CORP.**

9F-I, NO. 400, SEC. I, CHANG PING RD., TAICHUNG, TAIWAN, R.O.C.

TEL: 886-4-2245-2818 (REP.) FAX: 886-4-2243-6928

E-mail: holytek@ms13.hinet.net

<http://www.holytek.com.tw>