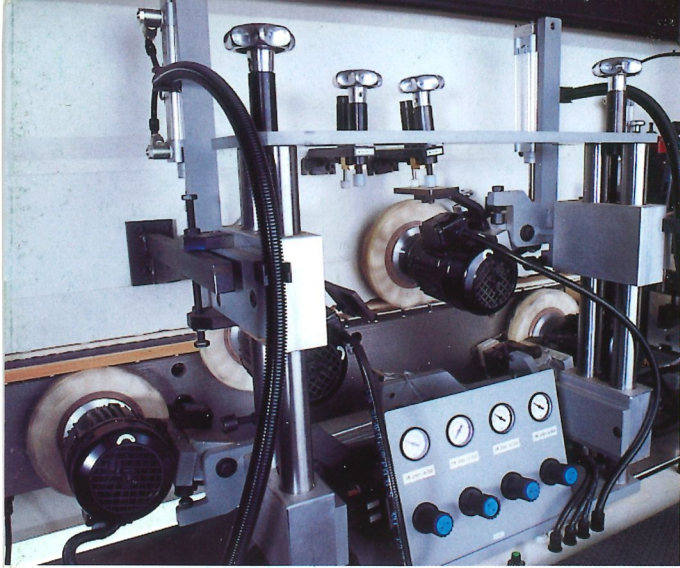


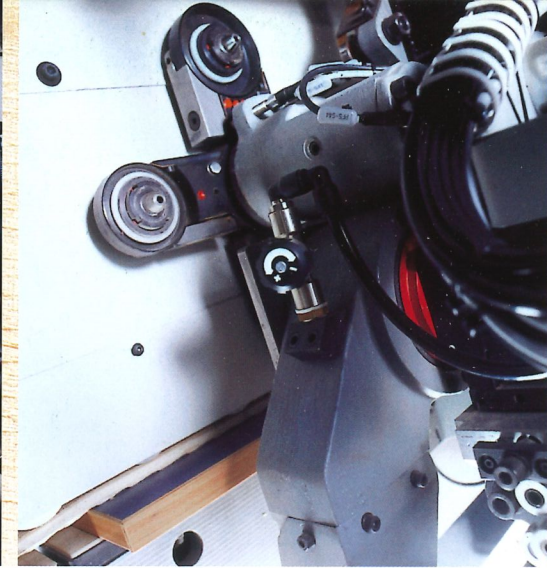
High-tech edge processing

High-tech edge banding solutions  
**Novimat**

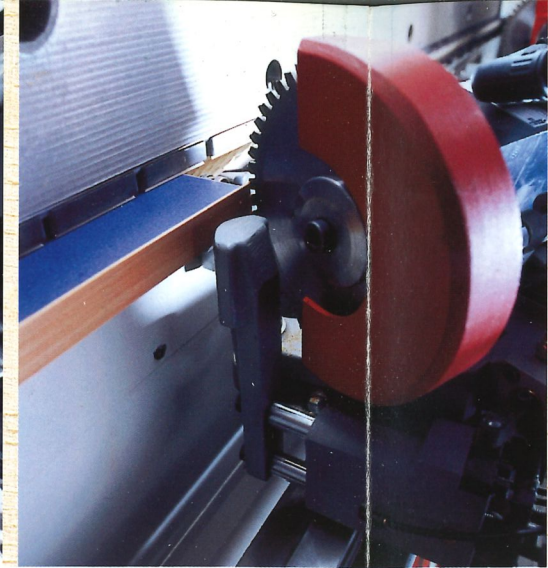
 **IMA**  
KLESSMANN

**Finishing**

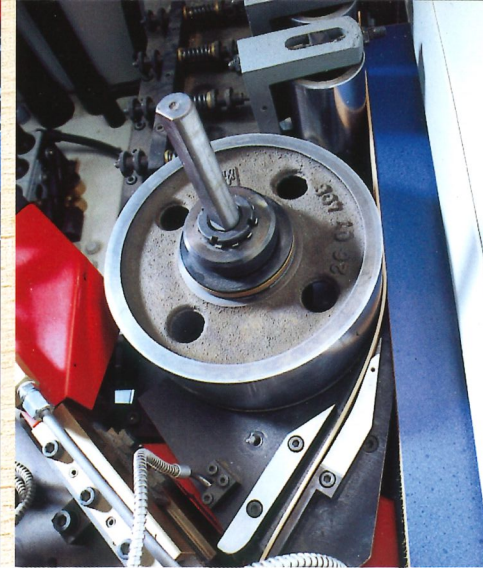
Perfect buffing on all corners and edges. Optional jump-buffing units for the front and back corner edges. Especially usefull for finishing cross-edge-banded postformed and softformed components

**Contour trimming**

Up to 3 different radii and steplessly adjustable chamfer milling using only one tool. Tracing wheels with an automatic change over provide an exact setting when the edging material is changed

**End trimming**

The ends of the overhanging edging material are trimmed reliably also at top speed. Automatic change over from flush to chamfer end trimming

**Glue application system**

The gluing unit is the heart of an edge banding machine. The stability of this glue application system means a long life of fine but above all durable glue joints

**Edging materials**

A single tape reel or a multi reel vertical magazine allow for a reliable infeed of the edging tape taking its material into account. The best possible adhesive joint results from the choice of edging material, adhesive and panel material

**Pre-milling**

The two pre-milling units ensure a high quality of the workpiece before the edging process. This ensures a high quality of the final product.

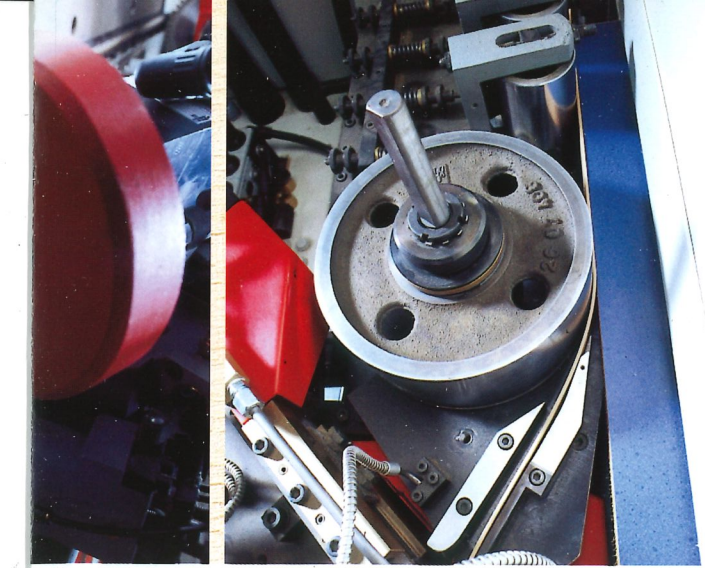
## High capacity and stability

The machines of the Novimat range offer a qualified answer to the demands of a batch size of 1. Standard equipment used in varied proven combinations can accommodate any mix of different edging materials. A whole range of different machine lengths make this flexibility possible. The heavy duty work-piece-transport chain with its high grip surface combined with a double "v"-top-pressure-belt provide a reliable clamping of the workpieces. Softforming glue application units and profile pressure zones are other options on the Novimat, which offer new creative dimensions in top edge banding quality.

## The eyecatcher in the workshop

Form follows function. The newly designed dust and noise reduction safety hoods open up wide allowing easy access to all units. An industrial PC with graphic colour screen makes it possible for all program and position changes to be repeated with absolute precision. A clear simple and direct input of





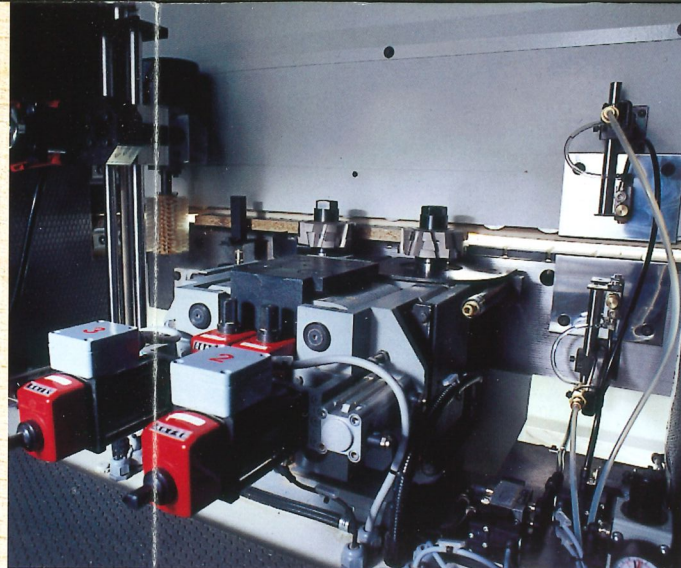
#### Glue application system

The gluing unit is the heart of an edge banding machine. The stability of this glue application system means a long life of fine but above all durable glue joints



#### Edging materials

A single tape reel or a multi reel vertical magazine allow for a reliable feed of the edging tape taking its material into account. The best possible adhesive joint results from the choice of edging material, adhesive and panel material



#### Pre-milling

The two pre-milling units with jump function - (one working with, one working against the feed) - provide the key for the best possible quality - at the glue joint where it counts



## The eyecatcher in the workshop

Form follows function. The newly designed dust and noise reduction safety hoods open up wide allowing easy access to all units. An industrial PC with graphic colour screen makes it possible for all program and position changes to be repeated with absolute precision. A clear simple and direct input of

sizes, without the need to use a programming language or code, provides the maximum flexibility as well as being very user friendly.



hat  
tor  
d t





More secure production through IMA service.

 **IMA**  
KLESSMANN

**IMA Maschinenfabriken**

**Klessmann GmbH**

Industriestraße 3, D-32312 Lübbecke

Phone ++49/57 41/331-0, Fax ++49/57 41/42 01

eMail: [contact@ima-ag.com](mailto:contact@ima-ag.com)

<http://www.ima-ag.com>

We reserve the right to make technical changes and improvements at any time without notice. The machine photographs also show options which are not part of the basic model. In each case the quotation text or order confirmation shall apply! The machine has been photographed without the complete protective devices, but these are included in the scope of supply.