

# DRILLING AND INSERTION MACHINE FOR HINGES AND BASEPLATES



Available models: TOMIC110 110v/ 1 ph  
TOMIC216 220v/ 1 ph  
TOMIC236 220v/ 3 ph  
TOMIC436 440v/ 3 ph



macchine e  
sistemi

**OMAL**



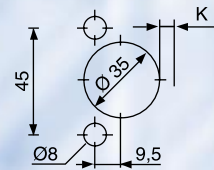
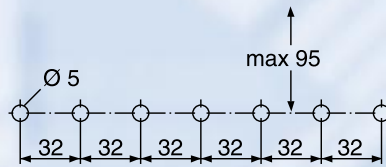
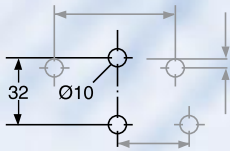
[www.hoechsmann.com](http://www.hoechsmann.com)

# Insert C

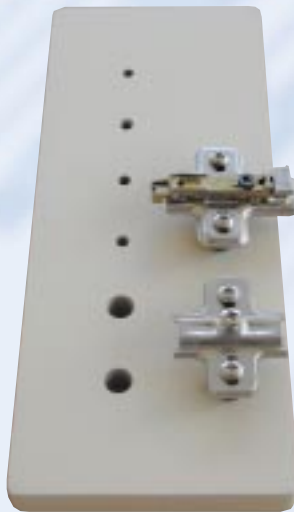
The OMAL - INSERT C machine can be used for multiple drilling solution:

- Hinge insertion
- Line drilling (base plates, shelf supports)
- Horizontal drilling (in line plates, K.D. fittings)

Feel free to contact our dealers for assembly instructions and set up.



**HORIZONTAL DRILLING**



**LINE DRILLING**



**HINGE DRILLING**

The OMAL drilling and insertion machine is designed to drill and PNEUMATICALLY insert SALICE hinges or other hardware thus eliminating operator fatigue.

**TASK:** Reliable drilling and complete insertion of the hardware

**SAFETY:** A special electronic device activates the motor ONLY during drilling operations, the motor stops during the insertion phase.

The machine is designed to conform with the latest safety guidelines.



**STANDARD EQUIPMENT:**

- 1,5 HP motor
- 5 spindles gearbox (boring pattern 45x9,5, if not otherwise specified)
- Center fence
- Table (700 mm x 400 mm)
- Right hand and left hand extension rulers (700 mm / 2'4" each)
- 4 tilt stops (to index panels on the fence)
- Pneumatic (6 bar, 85 psi) hold down clamps
- Universal insertion RAM
- Set of drill bits - 1 x 35 mm RH bit + 2 x 8mm LH bits
- Tool kit
- Operators manual
- Total weight: 65kg / 150lbs

**Optionals:**

- 7 spindles line drilling head  
ITEM#TODRHD7
- Dust-collecting exhaust device  
ITEM#TOMEXDEV



CONTROL PANEL

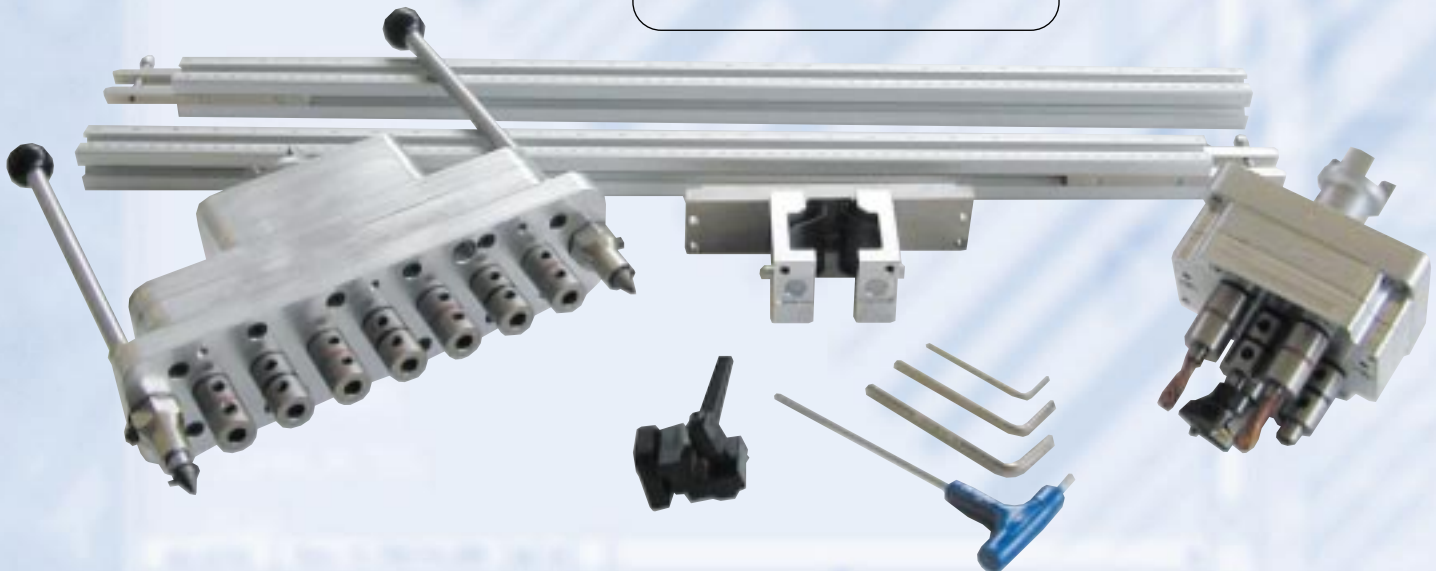


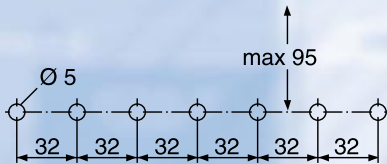
**7 SPINDLES LINE DRILLING HEAD**

DEPTH

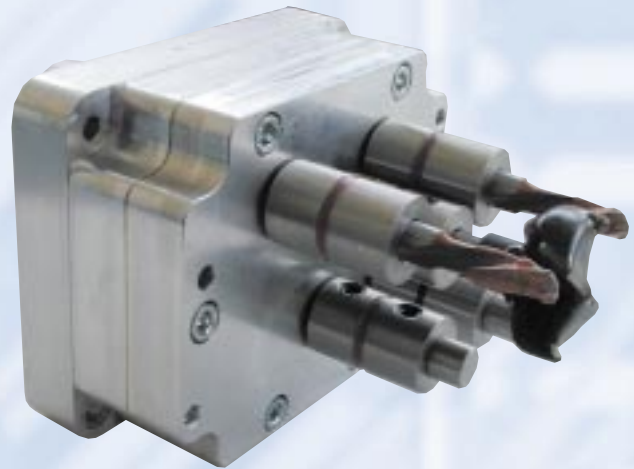
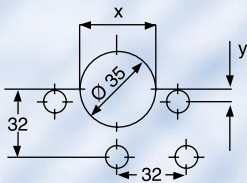
DRILLING DISTANCE

ACCESSORIES





**7 SPINDLES LINE DRILLING HEAD**



**5 SPINDLE GEARBOX**

**TECHNICAL DATA:**

- Interchangeable 5 spindle gearbox
- Motor 1,1 KW - 1,5 hp - 60 Hz
- Voltage 110 / 1 ph
- 220 / 1 ph
- 220 / 3 ph
- 440 / 3 ph
- Shank diameter Ø 10 mm
- Required air-pressure 6 bar / 85 Psi
- Table size 700 mm x 400 mm
- Weight 65 kg / 150 lbs

**DEALER NAME**