



circular saws

programmable
circular saws
class si 550ep
class si 400ep
nova si 400ep

manual
circular saws
class si 400
class si 350
class si 300
nova si 400
nova si 300
nova si 300s

The widest range of circular saws offering the market the latest and advanced technological solutions that different types of production urgently requires.

class

The best solution
for every application.

nova

Guaranteed quality
at your fingertips.



programmable
 circular saws
 class si 550ep
 class si 400ep
 nova si 400ep



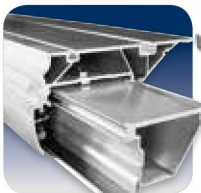
		class si 550ep	class si 400ep	nova si 400ep
Max. saw blade diameter with installed scoring unit	mm	550*	400	400
Max. saw blade projection from the table at 90°/45°	mm	200/130	140/97	140/97
Saw blade rotating speed	rpm	2500/3500/5000	3000/4000/5000	3000/4000/5000
Squaring stroke	mm	2200 ÷ 3800	2200 ÷ 3800	3200 ÷ 3800
Cutting width on rip fence	mm	1000 ÷ 1500	1000 ÷ 1500	1000 ÷ 1500
Three-phase motors starting from	kW/Hz	7 (8) / 50 (60)	7 (8) / 50 (60)	7 (8) / 50 (60)

Find the complete technical specification at page 18

* The machine isn't equipped with scoring unit



Saw Unit
sturdy structure



Sliding Carriage
high cutting quality



Rip Fence
smoothness and precision



Electronic Control
precision and ease-of-use

Superior technology combined with an ease of use.



manual
circular saws
class si 400
class si 350
class si 300



		class si 400	class si 350	class si 300
Max. saw blade diameter with installed scoring unit	mm	400	350	315
Max. saw blade projection from the table at 90°/45°	mm	140/97	118/81	100/70
Saw blade rotating speed	rpm	3000/4000/5000	4000	4000
Squaring stroke	mm	2200 ÷ 3800	2200 ÷ 3800	2200 ÷ 3800
Cutting width on rip fence	mm	1000 ÷ 1500	1000 ÷ 1500	1000 ÷ 1500
Three-phase motors starting from	kW/Hz	7 (8) / 50 (60)	7 (8) / 50 (60)	5 (6) / 50 (60)

Find the complete technical specification at page 18



Saw Unit
sturdy structure



Sliding Carriage
high cutting quality



Rip Fence
smoothness and precision

High construction quality for reliability and safe performance.



manual
circular saw
nova si 400
nova si 300
nova si 300s

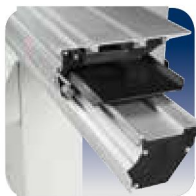


		nova si 400	nova si 300	nova si 300s
Max. saw blade diameter with installed scoring unit	mm	400	315	315 ÷ 400
Max. saw blade projection from the table at 90°/45°	mm	140/97	100/70	100/70 (with 315 mm blade) 140/97 (with 400 mm blade)
Saw blade rotating speed	rpm	3700	4000	4000 (with 315 mm blade) 3700 (with 400 mm blade)
Squaring stroke	mm	3200 ÷ 3800	3200 ÷ 3800	1600
Cutting width on rip fence	mm	1000 ÷ 1500	1000 ÷ 1500	1000 ÷ 1500
Three-phase motors starting from	kW/Hz	7 (8) / 50 (60)	5 (6) / 50 (60)	5 (6) / 50 (60) (with 315 mm blade) 7 (8) / 50 (60) (with 400 mm blade)

Find the complete technical specification at page 18



Saw Unit
sturdy structure



Sliding Carriage
high cutting quality



Rip Fence
smoothness and precision

Essential configuration with complete equipment to carry out professional machining.

circular saws operating groups



sturdy structure

Saw unit

The saw blade lifting is carried out by a strong cast-iron structure with sliding on ground round slideways which guarantee the **best accuracy**. The unit tilting is carried out on cast-iron rotation sectors in a crescent shape to ensure reliability over time.

always user friendly and precise

Handwheels on the machine front

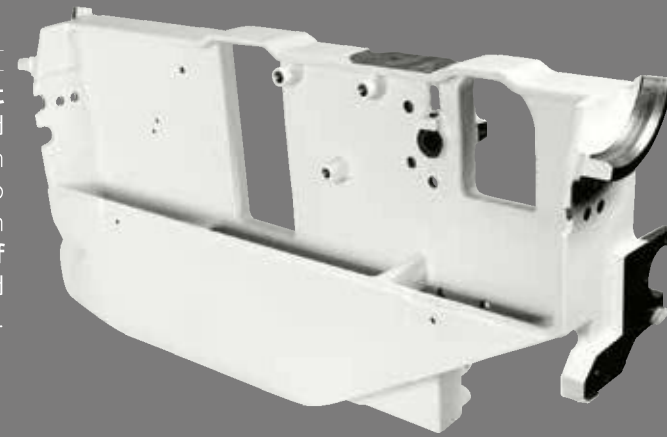
Ease of use in every day operation due to the dedicated gear box (**SCM solution**), fully protected from dust, that provides a smooth and direct transmission. Every minimum handwheel movement corresponds to a precise blade adjustment.



perfect cut

Saw unit

Maximum torsional rigidity and the total absence of vibration through the closed loop structure of the saw unit which ensures **perfect alignment of the blades** during tilted and difficult cuts.



simple and effective

Manual adjustment of the scoring unit

Vertical and horizontal adjustments are carried out by user-friendly mechanical levers that operate directly making **precise and smooth movements**. The useful mechanical stops allows immediately finding of the set position. The positioning of the controls allows their use without moving from the front of the machine.

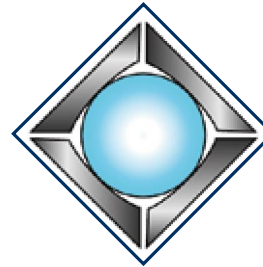




maximum cut quality guaranteed over time

Sliding carriage

The carriage will never require adjustment due to its closed reticular geometry with steel guides using an **exclusive method of mechanical fixing**.



Furthermore the **“arc” profile of the class arch-ground steel slideways (SCM Solution)** ensures:

- No play and loads four times higher than others
- +/-0,05 mm tolerance on the entire carriage length for straight and high quality cutting
- Sliding effectiveness over time, thanks to the particular guides positioning which ensures protection from dust



smooth, rapid and precise positioning

Rip fence

Sliding of the rip fence support on round bar with micrometric adjustment. The support can be also equipped with digital readout for fence position with detecting system on magnetic band (option). The fence can be easily excluded from the working area when it isn't used.



class



nova

optimal support

Squaring frame and fence

Panel loading is easy on the large squaring frame with an idle roller at the end and the mobile cross beams offer an **optimal support** also to smaller panels. The telescopic squaring fence with the inclined metric scale and two reversible stops can be used to square panels measuring 3200 x 3800 mm and for tilted cuts at up to 45° on both sides of the frame.

programmable circular saws electronic controls

the operating advantage
for easy assistance

Easy

Maximum reliability due to the function pushbuttons and easy-to-use with the electronic control of up to 5 axes with the 7" LCD display, 16:9 format. Integrated and fast control of all dedicated functions.

These features translate into immediate improvements in productivity and guarantees the capability of the full potential of the machine.



one cut only, the correct on

Operator's support

The large display suggests to the operator information for the correct use of any cutting configuration. In particular it displays in real time the correct position of the stop on the basis of the known measurements of the work piece (**SCM Solution**).



the practical advantage for
automatic control of the main
positions

Ready

The **programming** of the work becomes **simple and effective** with the electronic control with a 4" LCD display.

- Working mode: manual, semi-automatic and automatic with a memory capacity of up to 99 programs.
- Tool data setting with automatic height adjustment.
- Calculator and hour counter.



Saw unit lifting



Saw unit tilting



Programmable rip fence (option)



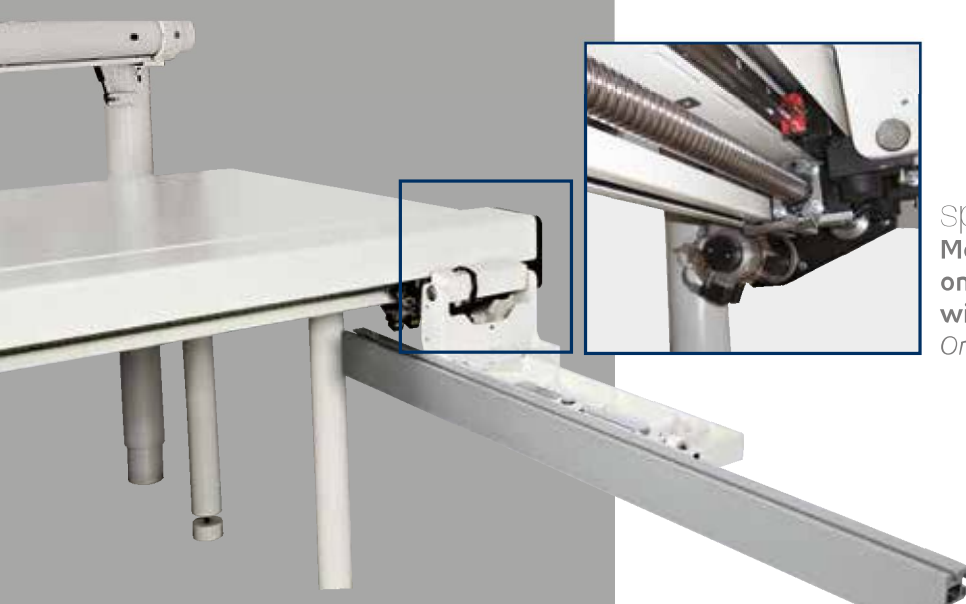
Blade speed readout

Easy control can easily manage the **inverter for the adjustment of the saw blade rotation speed and the scoring unit alignment (option)**.





maximum practicality
Pushbuttons integrated in the carriage
 The possibility to start or stop the blades motors from the pushbuttons located at the ends of the carriage **considerably helps when machining large dimensioned panels.**
(option)



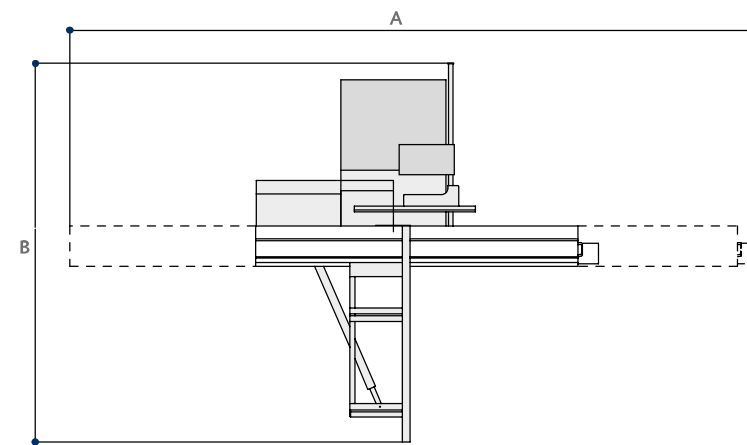
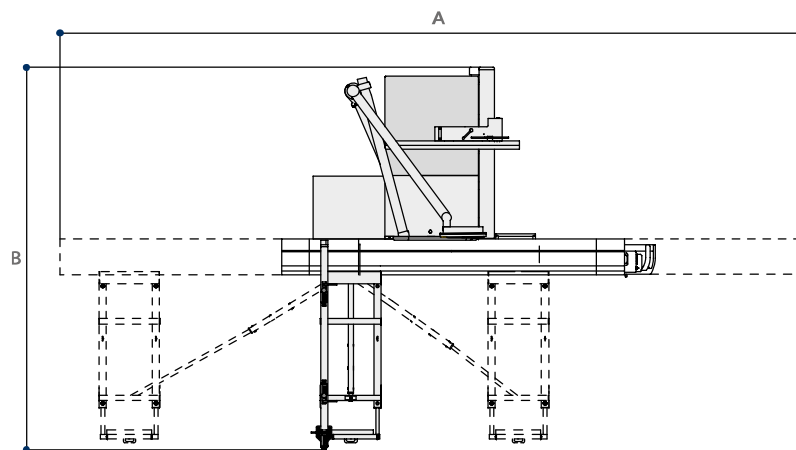
speed and precision
Motorised programmable rip fence mounted on a recirculating ball screw mechanism with sliding on linear guides.
Only for Ready 3 Plus / Easy 3 Plus versions



practicality and safety
Motorized programmable rip fence with steel cable and sliding on sturdy round steel bar.
 Position readout on magnetic band.
Only for Ready 3 versions

circular saws

dimensions and technical data



		class si 550ep	class si 400ep
Cast-iron saw table dimensions	mm	1285 x 700	1040 x 630
Blades tilting		90° ÷ 45°	90° ÷ 45°
Max. saw blade diameter with installed scoring unit	mm	550*	400
Max. saw blade projection from the table at 90°/45°	mm	200/130	140/97
Saw blade rotating speed	rpm	2500/3500/5000	3000/4000/5000
Squaring capacity	mm	2200 ÷ 3800	2200 ÷ 3800
Cutting width on rip fence	mm	1000 ÷ 1500	1000 ÷ 1500
other technical features			
Three-phase motors 5 kW (6,6 hp) 50 Hz - 6 kW (8 hp) 60 Hz		-	-
Three-phase motors 7 kW (9,5 hp) 50 Hz - 8 kW (11 hp) 60 Hz		S	S
Three-phase motors 9 kW (12 hp) 50 Hz - 11 kW (15 hp) 60 Hz		O	O
Three-phase motors 14 kW (19 hp) 50 Hz - 14 kW (19 hp) 60 Hz		O	-
Exhaust hoods diameter			
- at the base	mm	120	120
- on overhead protection	mm	100	100
- on riving knife	mm	-	60

* The machine isn't equipped with scoring unit

S Standard
O Option

		class si 550ep	class si 400ep	nova si 400ep	class si 400	class si 350	class si 300	nova si 400	nova si 300	nova si 300s
A with 1600 mm carriage	mm	-	-	-	-	-	-	-	-	3760
A with 3200 mm carriage	mm	7250	7250	7100	6825	6825	6825	7100	7100	-
A with 3800 mm carriage	mm	8500	8500	8140	7425	7425	7425	8140	8140	-
B 1000 mm with cutting width on rip fence	mm	3922	3815	4870	3740	3740	3597	4870	4870	3115
B 1270 mm with cutting width on rip fence	mm	4247	4140	5155	4110	4110	3867	5155	5155	3400
B 1500 mm with cutting width on rip fence	mm	4372	4265	5370	4235	4235	4097	5370	5370	3615

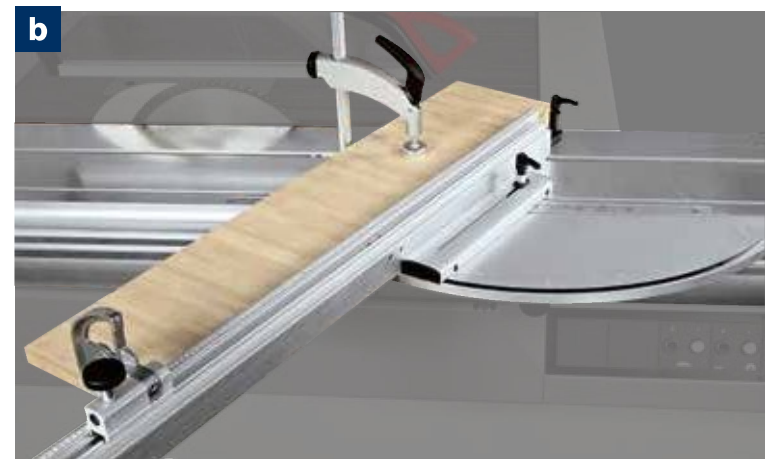
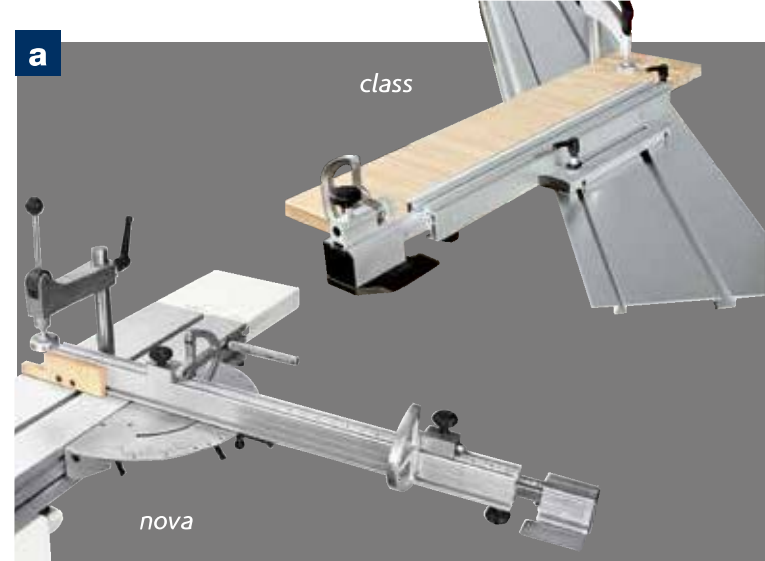
nova si 400ep	class si 400	class si 350	class si 300	nova si 400	nova si 300	nova si 300s
1040 x 630	1040 x 630	1040 x 630	900 x 550	1040 x 630	900 x 550	900 x 550
90° ÷ 45°	90° ÷ 45°	90° ÷ 45°	90° ÷ 45°	90° ÷ 45°	90° ÷ 45°	90° ÷ 45°
400	400	350	315	400	315	315 ÷ 400
140/97	140/97	118/81	100/70	140/97	100/70	100/70 (with 315 mm blade) 140/97 (with 400 mm blade)
3000/4000/5000	3000/4000/5000	4000	4000	3700	4000	4000 (with 315 mm blade) 3700 (with 400 mm blade)
3200 ÷ 3800	2200 ÷ 3800	2200 ÷ 3800	2200 ÷ 3800	3200 ÷ 3800	3200 ÷ 3800	1600
1000 ÷ 1500	1000 ÷ 1500	1000 ÷ 1500	1000 ÷ 1500	1000 ÷ 1500	1000 ÷ 1500	1000 ÷ 1500
-	-	-	S	-	S	S
S	S	S	O	S	O	O
O	O	-	-	O	-	-
-	-	-	-	-	-	-
120	120	120	120	120	120	120
80	100	100	100	80	80	80
-	60	60	60	60	60	60

circular saws main optional devices

Angular cutting devices

Available for the following versions

- a) traditional
- b) with automatic self-adjustment of the stops position in respect of the blade
- c) with automatic self-adjustment of the stops position in respect of the blade and electronic readouts for stop position and rule tilting angle



Rip fence unit

The exclusive referencing system for the first trim cut allows the setting of trim quantity to be cut for every side **without any test cuts**.

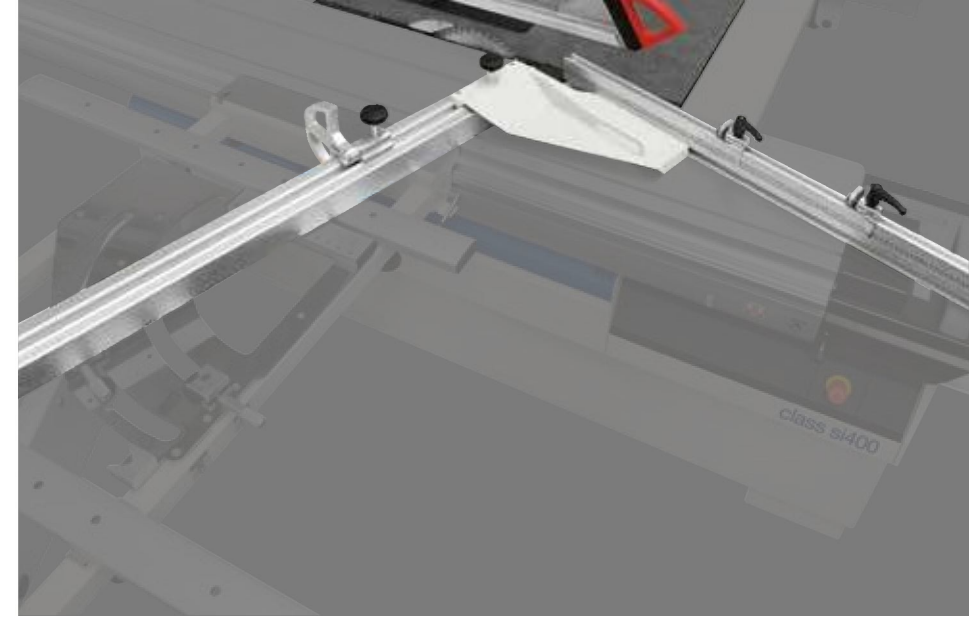
Available also with electronic readouts.





Squaring frame with "Compex" device

with automatic self-adjustment of stops position in respect of the blade and rule tilting angle. Furthermore, thanks to the dedicated frame structure, it is possible to carry out **tilted cuts keeping the squaring rule comfortably within the operator's reach**, both in acute cuts and in obtuse ones, without renouncing to a valid support of the piece.



Fence for complementary cutting

Device to be applied directly on the squaring rule that allows to quickly carry out cuts with angles complementary to the rule one.

Electronic readouts on the squaring stops
The stops can be easily read even from distance.



speed and precision
"Quick Lock" fence with rapid release.

Minimum set up time with the **SCM system that allows rapid fence positioning.** The extending roller and the stronger frame support maximise performance.

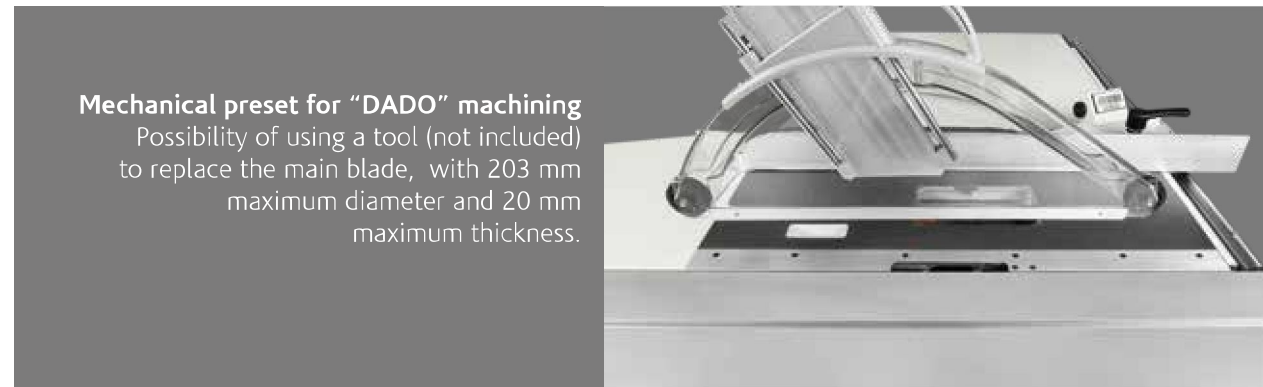
circular saws main optional devices



Overhead blade protection
For totally safe machining.



Surface reinforcement treatment
For sliding table and mobile crossbars of squaring frame.
Dedicated to the intensive processing and particularly
abrasive materials.



Mechanical preset for "DADO" machining
Possibility of using a tool (not included)
to replace the main blade, with 203 mm
maximum diameter and 20 mm
maximum thickness.



"Pro-Lock"
"Pro-Lock" system for the main blade rapid locking
with fast and tool-less riving knife adjustment.



Expandable scoring blade
Manually expandable with variable thickness from
2,8 to 3,6 mm. 120 mm blade diameter.

Pneumatic presser

Particularly suitable for the cutting of thin materials.



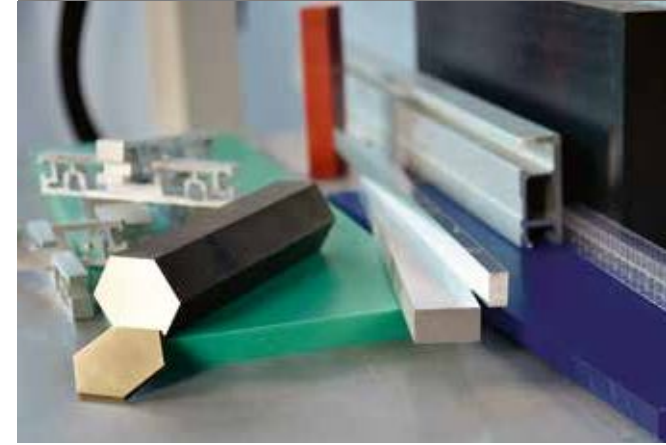
Second extension with sliding rail support

to safely support panels for large dimension and weight.



Advance materials machining

PVC and other plastic materials. Nylon, polycarbonate and other synthetic materials. Corian and other composite materials. Aluminium, brass and other light metals.



Device for the blade micro-lubrication

Compulsory for the machining of light alloys, extremely useful with particular plastic materials.



circular saws main optional devices

	class si 550ep
"READY 3" version	0
"READY 3 UP" version	-
"READY 3 UP PLUS" version	-
"EASY 3 UP PLUS" version	-
"CUT 140" version	-
Expandable scoring blade	-
Surface reinforcement treatment for sliding table and mobile crossbars of squaring frame	0
Start/stop pushbuttons integrated in the sliding carriage	0
"Quick Lock" squaring fence	0
Squaring fence with LCD readouts for stops position	0
Fence for angular cutting on the sliding carriage	0
Fence for angular cutting with self-adjustment	0
Fence for angular cutting with electronic readouts and self-adjustment	0
Squaring frame with "Compex" device	0
Fence for complementary cutting	0
Fence for rip cutting on the sliding carriage	0
Fence for rip cutting on the sliding carriage with electronic readout	0
Inverter for electronic speed change from 2700 to 6000 rpm	-
2-axis scoring unit with automatic adjustment	-
Electronic readout of parallel fence position	0
Presser on entire carriage length	0
Second extension with sliding rail support	0
"Pro-Lock" system for the main blade rapid locking with fast and tool-less riving knife adjustment	0
"DADO" machining	-
Machine configuration for advanced materials machining	-
Device for the blade micro-lubrication for the machining of plastic materials and light alloy	-
Overhead blades protection	S

* Standard for CE and USA-Canada versions; Option for NO CE versions

S Standard
O Option

class si 400ep	nova si 400ep	class si 400	class si 350	class si 300	nova si 400	nova si 300	nova si 300s
0	0	-	-	-	-	-	-
0	0	-	-	-	-	-	-
0	0	-	-	-	-	-	-
0	-	-	-	-	-	-	-
-	-	-	-	-	-	-	0
0	0	0	0	0	0	0	0
0	-	0	0	0	-	-	-
0	0	0	0	0	0	0	-
0	-	0	0	0	-	-	-
0	0	0	0	0	0	0	-
0	0	0	0	0	0	0	0
0	0	0	0	0	0	0	0
0	0	0	0	0	0	0	0
0	-	0	0	0	-	-	-
0	0	0	0	0	0	0	-
0	0	0	0	0	0	0	-
0	0	0	0	0	0	0	0
0	-	0	0	0	-	-	-
0	-	0	0	0	-	-	-
0	-	0	-	-	-	-	-
0	0	0	0	0	0	0	0
0	-	0	0	0	-	-	-
0	-	0	0	0	-	-	-
0	-	0	-	-	-	-	-
0	0	0	0	0	0	0	0
0	0	0	0	0	0	0	0
0	0	0	0	0	0	0	0
0	0	0	0	0	0	0	0
S*	S	S*	S*	0	S*	0	0