

Optimat ABD 100 | 200

CNC-Drilling and Dowel Inserting Machine



Optimat ABD 100 | 200

Horizontal drilling, gluing and dowelling with one machine

Highlights:

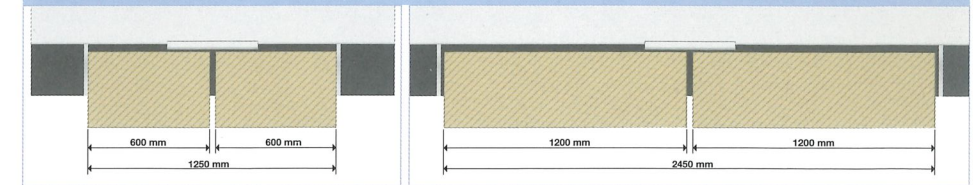
- Addition to the processing center or stand-alone solution
- No prescribed drilling or dowelling patterns
- Simple and rapid material handling
- No set-up times
- Easy software programming with woodWOP



Optimat ABD 200

Optimat ABD 100 | 200

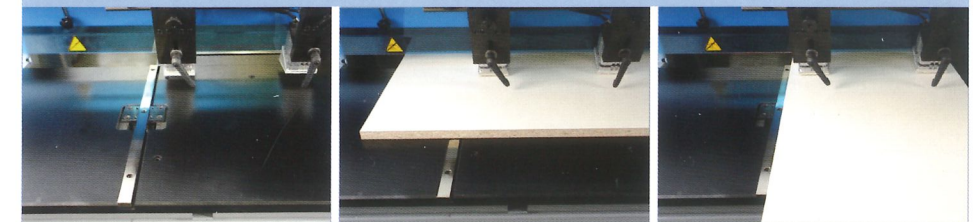
Alternate operation



Optimat ABD 100

Optimat ABD 200

Center stop



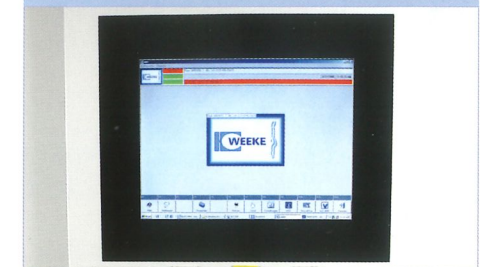
- pneumatically lowerable
- manual control by (selection) switch

Barcode interface (option)

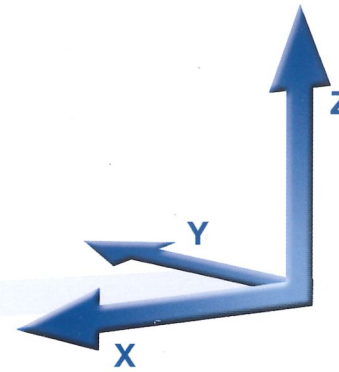


- Barcodescanner / -software

power control with UPS



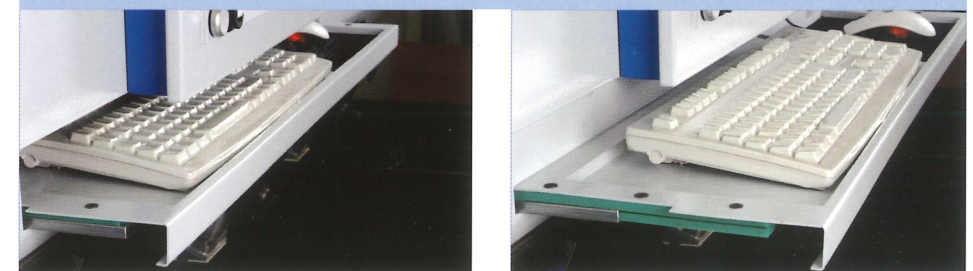
- TFT-Display
- CD-RW device
- Modem
- USB frontside bus
- UPS - protects the computer against damages in case of mains interruption



Axis:

- X-direction: CNC-controlled
- Y- and Z-direction: Manual adjustable

Pull-out keyboard

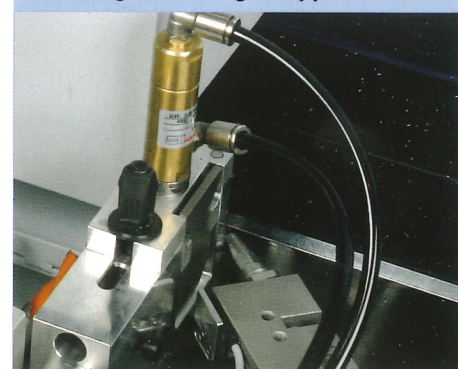


Drilling spindle and doweling aggregate

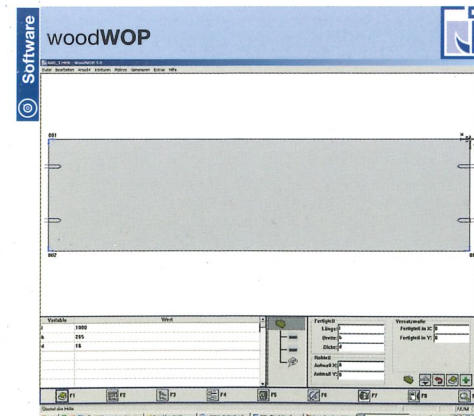


- For precise processing while drilling and dowelling horizontally

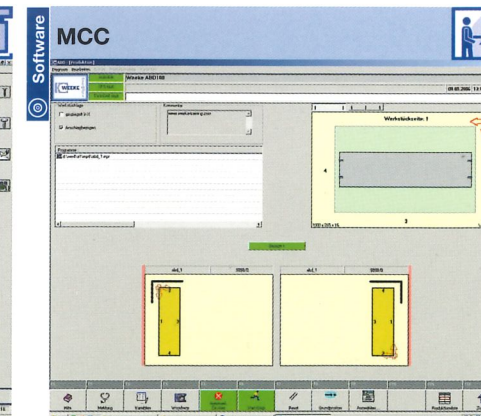
Dowelling tool with glue application



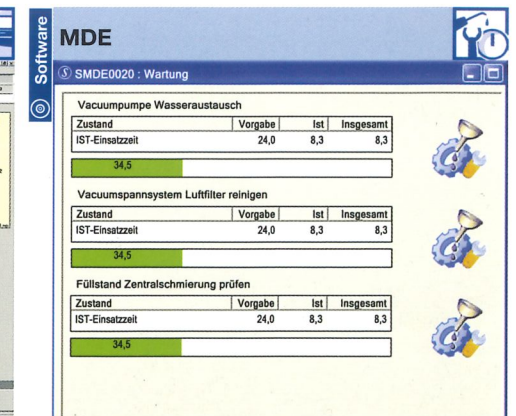
- Glue injector with adjustable glue amount
- Glue flow control
- 32 mm distance from the drilling spindle



- Modern software based on Windows®
- More than 15.000 installations worldwide

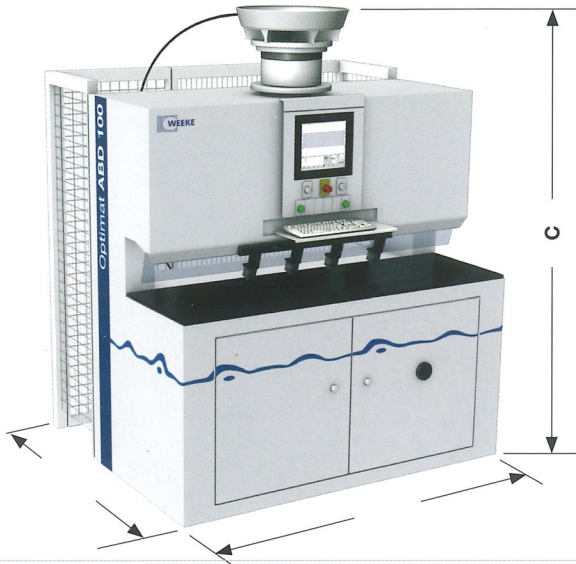


- Modern and simple control of main machine functions through soft keys
- Graphical loading



- Machine Data Recording - collecting and evaluating machine states via time meter and event meter

Setting up dimensions



Dimensions	ABD 100	ABD 200
A	1540 mm	1540 mm
B	2250 mm	3500 mm
C	2285 mm	2285 mm

mm

Handling example



Technical Data

Workpiece dimensions		ABD 100	ABD 200
Length/Width/Thickness (min)	mm	20/50/10	20/50/10
Length/Width/Thickness (max)	mm	1250/800/60	2500/800/60
Compressed air connection	inch	R 1/2"	R 1/2"
Compressed air supply	bar	min. 7	min. 7
Total connected voltage	kW	appr. 7,7	appr. 7,7
Extractor connection	mm	1 x D 80	1 x D 80
Extraction speed	m/sec.	min. 30	min. 30
Supply voltage	A	16	16
Total machine weight	kgs	appr. 1600	appr. 2200

You may contact us - WORLDWIDE



- Teleservice possibility via basic internet-connection (TSN-possibility)
- Competent spare parts service
- Weeke Communication: Up-to-date information at all times: www.weeke.com
- Any questions, new ideas, criticism & praise to: info@weeke.de

contact



WEEKE Bohrsysteme GmbH
 Benzstraße 10-16
 33442 HERZEBROCK-CLARHOLZ
 GERMANY
 Tel.: +49 5245 445-0
 Fax: +49 5245 445-139
info@weeke.de - www.weeke.de