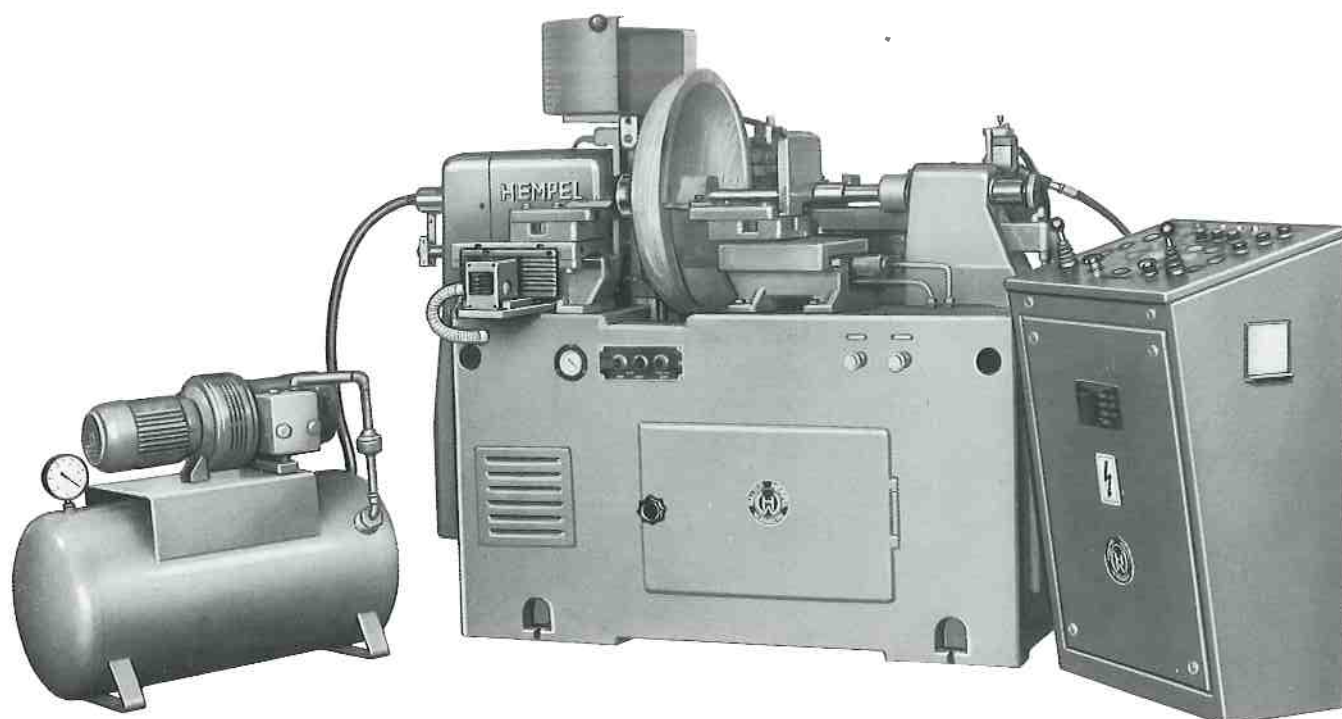


ERH-6 Plate, Bowl, and Disc Turning Lathe



This machine is intended for the production of wooden plates, bowls, discs, and similar articles up to **600 mm (24")** in diameter.

It has a vacuum-operated clamping unit which enables the user to hollow the inside of the workpiece right to the center so that plates or bowls, can be finished in one single continuous operation, provided there is a sufficiently large clamping surface on the reverse side of the turning. The parts can of course also be clamped between driving plate and counterpoint, if required.

The machine uses square wooden boards, planed on one side, except for the largest diameters where eight-sided blanks instead of squares must be used. The **maximum thickness** of these boards is **100 mm (4")**.

The standard machine has in front one traversing tool holder slide carrying the knives for removing the corners of the board. Profile cutters to carry out a grooving operation can be fitted in addition.

Mounted on the back of the lathe is the template controlled copying unit for finishing the inside of the turning.

On request, the machine can be furnished with a second front traversing slide and a second template controlled copying unit. The latter is required when a large profile shall be cut on the reverse side of the workpiece.

The operation of the lathe is fully hydraulic. Once the wood is placed onto the centering attachment, the entire cycle of operations is carried out automatically.

The finished turning is extremely clean and smooth. If an additional sanding touch-up is desired, this should not be done in the lathe but separately on a simple spindle unit, which we supply on request, or on our **PQ-4 plate sander** specially built for this purpose. (The vacuum pump has two connection facilities.)

The machine is supplied with the following motors:

- One 5.5 kW, 2800 rpm spindle motor
- One .85 kW, 1400 rpm hydraulic pump motor
- One .55 kW vacuum pump motor

Approximate Weight with Motors

	Net Weight	Incl. Seaworthy Case
Machine	1895 lbs.	2340 lbs. (162 cu. ft.)
w/vacuum pump	2140 lbs.	2580 lbs. (187 cu. ft.)

We reserve the right to amend or modify the design.