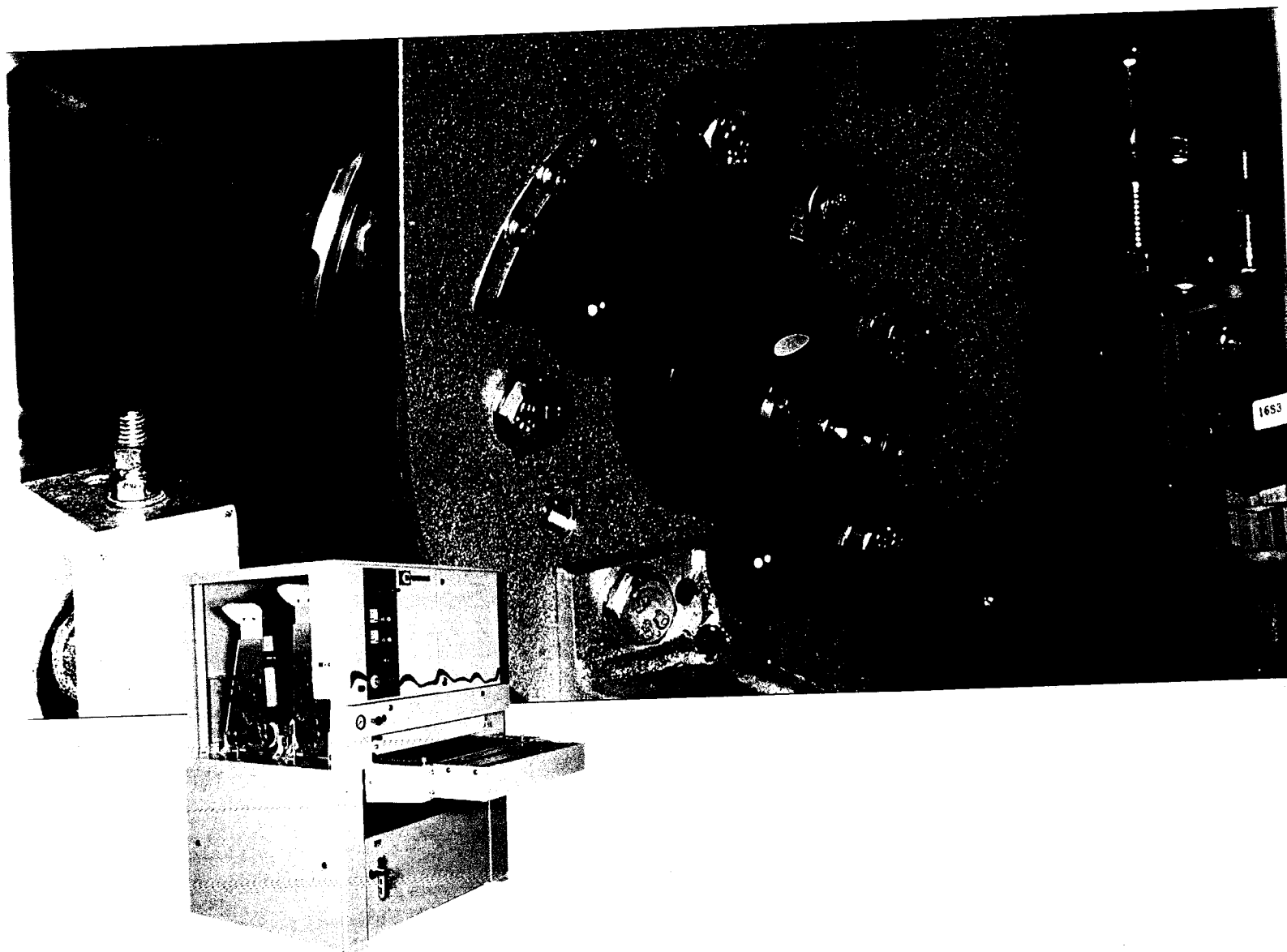
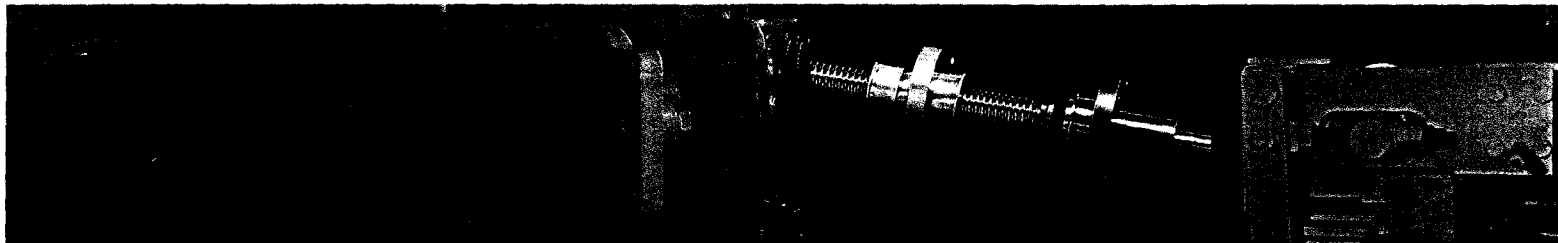


Wide Belt Sanding Machines Optimat STO 213 RL



BÜTFERING STO 213 RL

Calibrating and Fine Sanding with 2 Heads

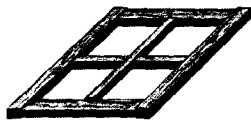


Easy regulation of the sanding pressure within the air cushion pad

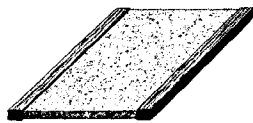
Rubberised conveyor belt drive drum

Conveyor table supported on four double supported spindles
5 Ton jack screws

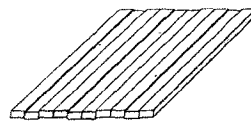
Automatic conveyor belt tracking



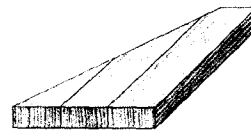
Frames



Calibrating solid edges



Glued up panels



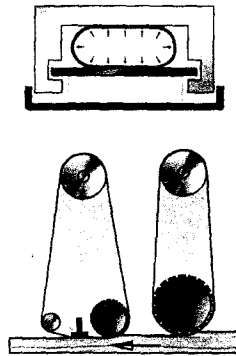
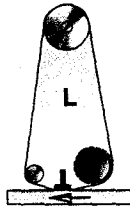
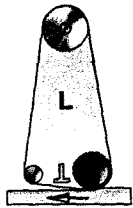
Solid wood components



Veneer sanding with air cushion pad

Mode 1
Calibrating with the contact roller lowered

Mode 2
Fine sanding with the sanding pad

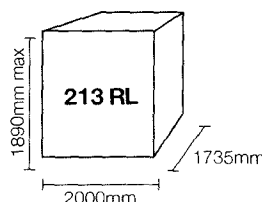
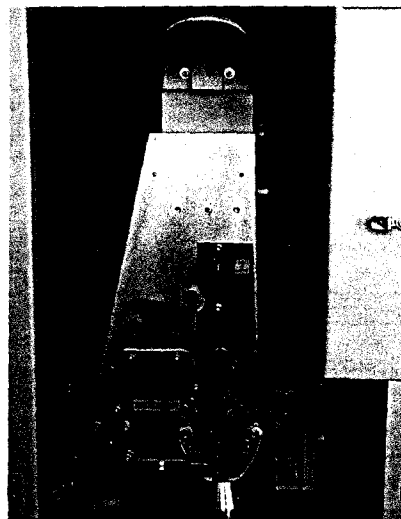


STO 213 RL

- Precise calibrating with one or two contact rollers
- Sanding of solid wood with 2 heads in one pass with a choice of using a contact roller or air cushion pad within the 2nd head
- Sanding of veneered workpieces in one or two passes with air cushion pad only

STO Technical Data

Model		213 RL
Number of heads		2
Working width	mm	1350
Abrasive belt width	mm	1370
Abrasive belt length	mm	1900
Workpiece thickness	min.-max. mm	3 - 150
Drive motors Head 1	KW	18.5
Head 2	KW	15
Compressed air	bar	6
Compr. air consumption	max. L/min.	30
Extraction capacity approx.	m³/h	4000
Air speed	m/sec.	20
Length	mm	1735
Width	mm	2000
Height	mm	1890
Total connected load	KW	36
Weight	kg	2600



Other standard features:

- Automatic workpiece thickness setting with joystick control
- Indexing button for precise stock removal adjustment
- Machine ready indicator lights
- Feed table with high quality rubber belt
- Electrical braking system on all heads
- Electronic abrasive belt tracking
- Storage area for sanding inserts
- Overthickness protection device

BÜTFERING

Bütfering
Schleiftechnik GmbH
Stromberger Straße 170
D-59269 Beckum
Fon 0049 25 21-842-0
Fax 0049 25 21-842-67
www.buetfering.de
info@buetfering.de