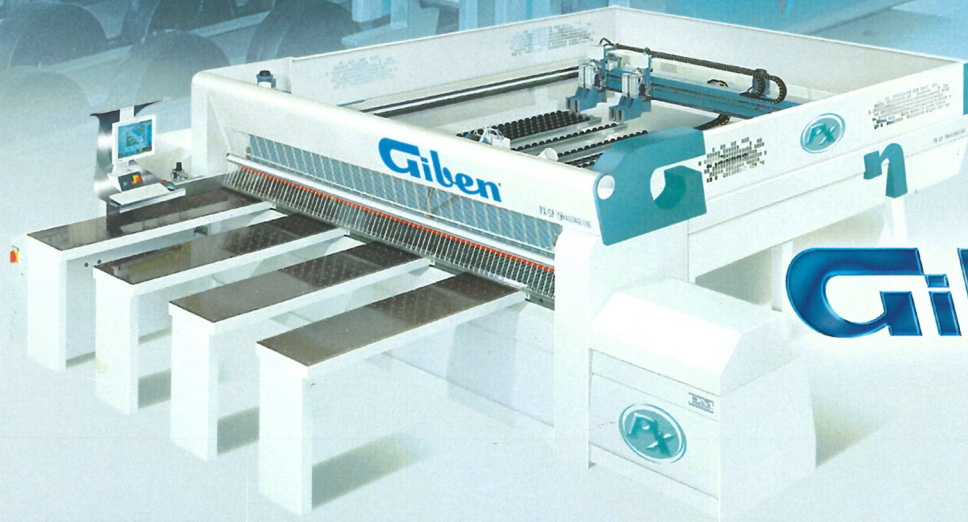
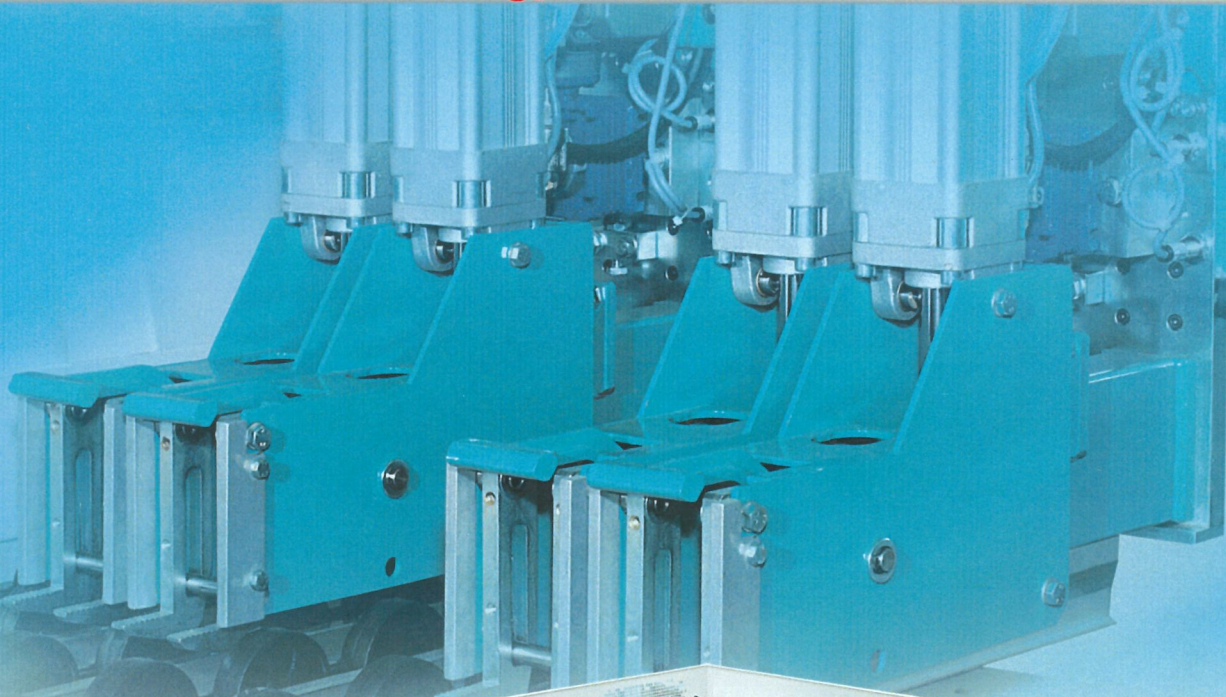




**DM**  
SYSTEM

**A new technology. A new look. A new era.**



**Giben®**



Saw carriage and "triangle shaped" guiding system.

Split and independent pressure beam.

Automatic side aligning device with two independent rollers (optional).



**A new technology. A new look. A new era.**

The new series **GIBEN PX** represents the most advanced technology in panel sizing. Its look, its technical innovation PM System makes it truly unique.

PM System is the innovative system of moving grippers using operator controlled positioning, in a process of high automation to add the maximum flexibility to the production environment.

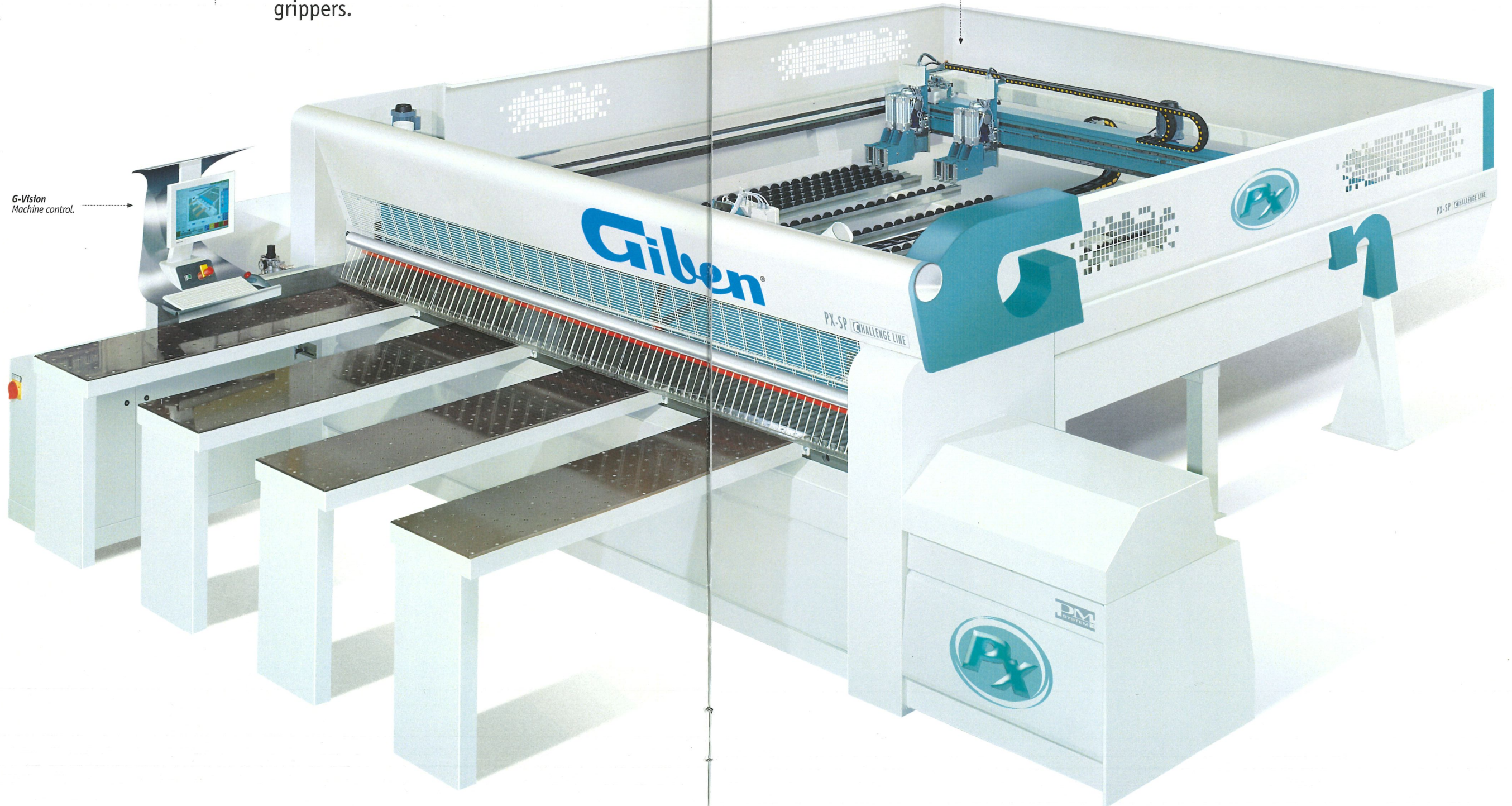
**NEW GIBEN PX-SP**  
The "state of the art" of cut-to-size technology.

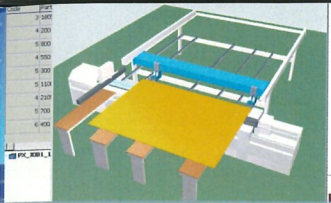
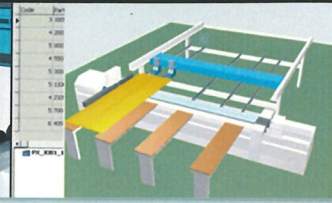
The SP version features front loading of the stacks and pusher with PM System grippers.



**GIBEN PX-SP** equipped with two couples of moving grippers along the length axis (X) of the pusher.

G-Vision  
Machine control.





**A new technology. A new look. A new era.**

**THE REVOLUTIONARY CHANGE IN THE WAY PANEL SAWS OPERATE!**

**New system of moving grippers with operator controlled positioning.**

PM System makes the panel saw suitable to work with panels or groups of strips of any size. Its basic tools, the grippers, have been made adaptable to different formats and to type of different panels or group of strips. The gripper has been conceived as a robotized device, controllable by the operator in its movements along the length axis (X) of the pusher.

**Optimization without limitation**

There is no limitation as to the patterns that the machine can process, because the "danger" areas of fixed position grippers have been eliminated by the PM System. Cutting of rests even small size can be optimized.

**Long term solution**

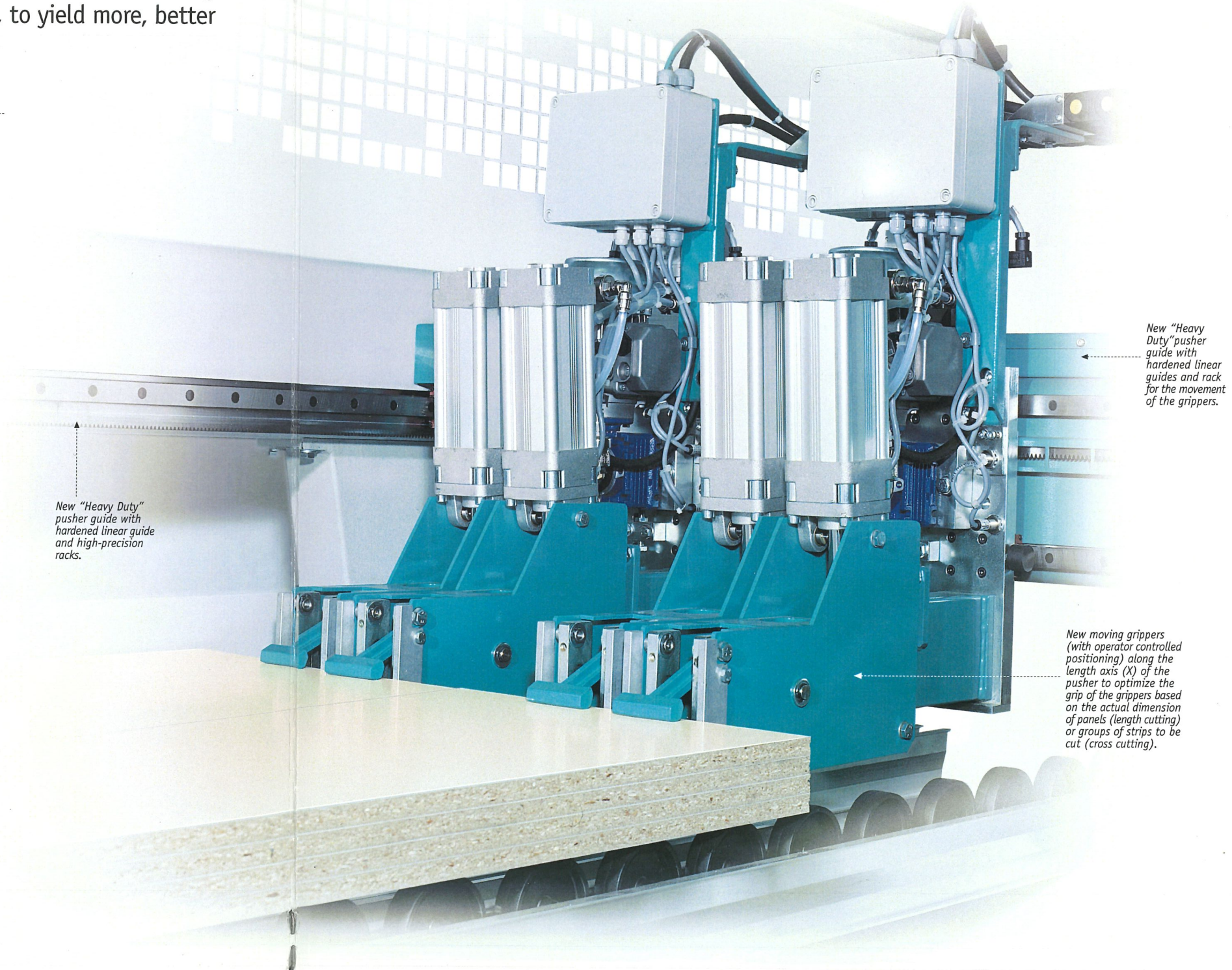
There is no need to replace or modify the machine as the panel format needs change. PM System is the solution which allows the machine to meet the needs of today and tomorrow.

**PM SYSTEM**

The new operator controlled moving grippers system, to yield more, better and fast.



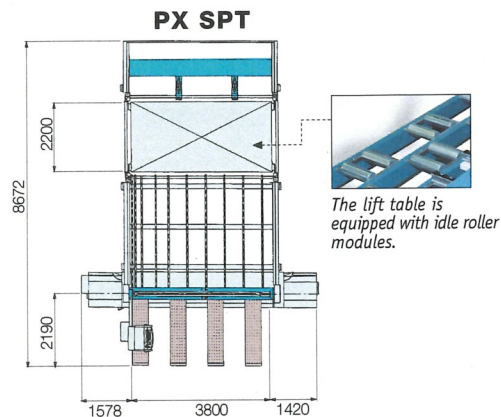
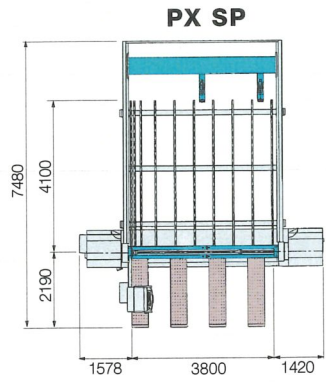
**NEW GIBEN PX-SP**



New "Heavy Duty" pusher guide with hardened linear guide and high-precision racks.

New "Heavy Duty" pusher guide with hardened linear guides and rack for the movement of the grippers.

New moving grippers (with operator controlled positioning) along the length axis (X) of the pusher to optimize the grip of the grippers based on the actual dimension of panels (length cutting) or groups of strips to be cut (cross cutting).

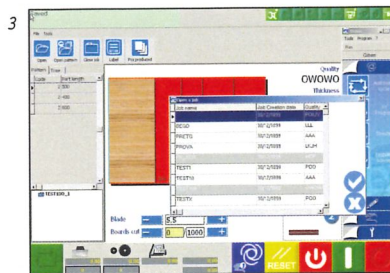
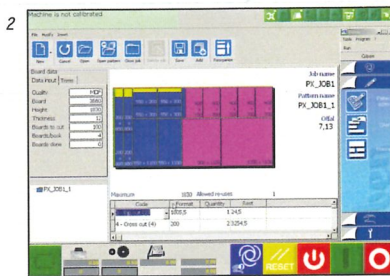


Technical specifications	PX	
	Hz 50	Hz60
Saw projection	100(115) mm	3,9"(4,4")
Saw carriage • feed speed • return speed	1+130 m/min. 130 m/min.	3+427 ft/min. 427 ft/min.
Main saw • motor	Ø 400(430)mm. 15 kW	Ø 15,7"(17") 18 kW
Scoring saw • motor	Ø 215 mm. 2,2 kW	Ø 8,4" 2,6 kW
Maximum pusher speed (*)	40 m/min.	132 ft/min.
Dust extraction • air speed • dust extraction outlets	30+35 m/sec. Ø 200 mm Ø 115 mm	98+115 ft/sec. Ø 7,8" Ø 4,5"
Compressed air • pressure • consumption	5+6 bar 20+30 l/min.	5+6 bar 20+30 l/min.

(\*) The feed speed of the pusher can be modified. The value stated above corresponds to a parametric data set during running tests. The data may vary country by country in relation to safety requirements.

MACHINES AND TECHNICAL DATA MAY VARY COUNTRY BY COUNTRY IN RELATION TO SAFETY REQUIREMENTS.

TECHNICAL DATA AND MACHINE CONFIGURATIONS MAY VARY. GIBEN RESERVES THE RIGHT TO MAKE MODIFICATIONS TO THE DATA AND TO THE REPRESENTATIONS MADE IN THIS BROCHURE AT ANY TIME AND WITHOUT PRIOR NOTICE.



- 1) - Real-time graphic of various operation phases.
- 2) - Pattern graphics shown on scale.
- 3) - Jobs library.
- 4) - Menu selection.
- 5) - Visual troubleshooting (optional).

**G-VISION** is Totally Integrated Automation solution to run all the machine movements directly. The machine layout in 3D and cutting patterns are displayed, to scale, on the screen. Throughout job execution, all machine operations, and panels and parts movements are displayed on the screen in real time. Direct control by **G-VISION** of all the machine functions facilitates the ultimate troubleshooting, enabling fast and efficient problem solving. This is achieved, from the operator's perspective, by a combination of detailed error message descriptions, suggested help solutions, optional short video clips, photographs and drawings. The input of data is made simple in a number of different ways, either graphically or manually at the machine, by floppy disk or via a network. Dynamic label printing with bar-code and graphics, as the parts are being cut, is also available.

On-line connection with Giben OPTISAVE software package for economical cut-to-size operations. As an option a **G-VISION** pattern optimizer, build into the machine controller. All of the above is installed on the machine controller, which is a standard office type PC equipped with a 15" flat monitor. The main elements making up the controller i.e., keyboard, mouse, computer and screen are completely interchangeable with their counterparts in the office.

**A new technology. A new look. A new era.**

### **G-VISION**

new machine control software has been developed by Giben to run within the Microsoft® Windows 2000™ / XP™ technology.



*Next generation control with 15" Flat monitor, mouse and keyboard gives the straightforward use of the panel saw.*

**CHALLENGE LINE**

**Giben**<sup>®</sup>

HEAD OFFICE

**GIBEN INTERNATIONAL** S.p.A.  
**PANEL SIZING CENTRES**  
40065 PIANORO - BOLOGNA - ITALIA  
Ph. +39-0516516400 - Fax +39-0516516425  
E-mail: info@giben.it

IN THE WORLD

**GIBENAMERICA** INC.  
**PANEL SIZING MACHINES AND SYSTEMS**  
NORCROSS, GA 30071 - USA  
Ph. 770-448-9140 - Fax 770-448-9133

**GIBENAUSTRALIA** PTY.LTD  
**PANEL SAWS AND ANGULAR SYSTEMS**  
SOMERTON PARK SA 5044-AUSTRALIA  
Ph. 08-8358-0011 - Fax 08-8358-0022

**GIBENdoBRASIL**  
**MAQUINAS E EQUIPAMENTOS LTDA.**  
CEP. 81450-080 CURITIBA - PR - BRASIL  
Ph. 041-3471030 - Fax 041-3471121

**GIBENCANADA** INC.  
**PANEL SIZING MACHINES AND SYSTEMS**  
WEIR, QUÉBEC CANADA, J0T 2V0  
Ph. 819-687-3234 - Fax 819-687-8466

**GIBENDEUTSCHLAND** GmbH.  
**MASCHINEN UND ANLAGEN ZUM AUFTEILEN VON PLATTEN**  
D - 72186 EMPFINGEN  
Ph. 07485-99803-0 - Fax 07485-99803-23

**GIBENdeESPAÑA** S.A.  
**MÁQUINAS E INSTALACIONES PARA SECCIONAR**  
08015 BARCELONA - ESPAÑA  
Ph. 93-4237993 - Fax 93-4260469

**GIBENSCANDINAVIA** A.S.  
**INDUSTRIELLE LØSNINGER**  
DK-5260 ODENSE S - DENMARK  
Ph. 0045-65-958262 - Fax 0045-65-959449

**GIBEN U.K.** LIMITED  
**PANEL SAWS AND ANGULAR SYSTEMS**  
NG7 2NN - NOTTINGHAM  
Ph. 0115-986-2150 - Fax 0115-986-2159

**A new technology. A new look. A new era.**

[www.giben.com](http://www.giben.com)

