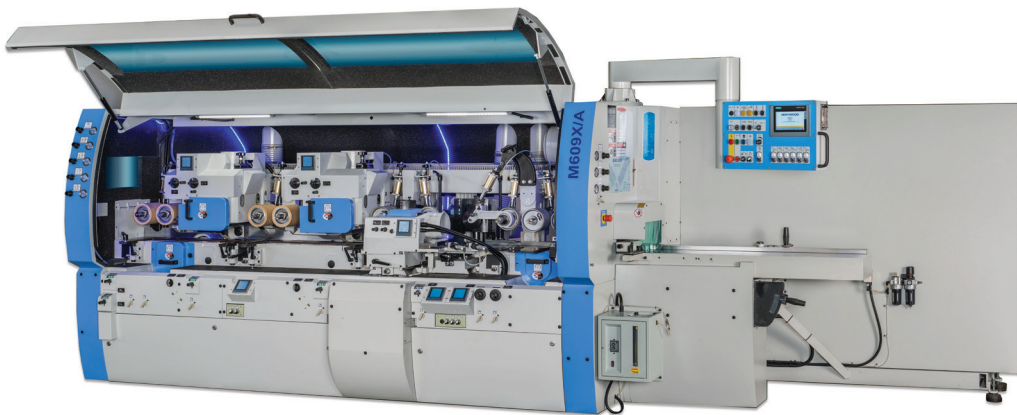


KENTWOOD XA CLASS MOULDERS



FAST & EASY SETUPS

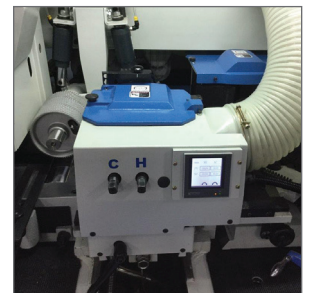
Designed with the operator's convenience in mind, the KENTWOOD XA Class moulder range is the flagship of the KENTWOOD offerings. Designed for fast and easy setups, this series is ideal for the shop that makes short runs often. The intuitive and professional navigation of the PowerSet control provides a powerful software solution for guided setups.

XA CLASS MOULDER OFFERINGS:

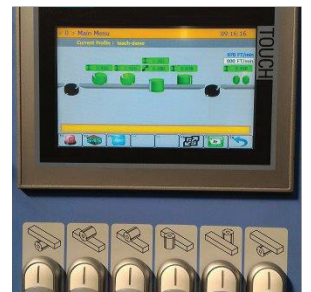
- ProLock spindle nuts
- Rapid setup hood design for top and near side spindles
- Higher spindle revolutions (7200-8000RPM)
- All pneumatic pressure elements throughout
- PowerSet human machine interface
- Reliable inverter spindle braking
- Heavier horsepower 5-axis of motorized spindle movements
- Telescopic feed roller shafts opposite near side
- 80mm axial travel on vertical spindles for stacked tooling applications
- All LCD/LED spindle displays



ProLock quick-action lock system is included



Rapid setup hood design for top and near side spindles allows fast setup



Standard with PowerSet control, providing a powerful software solution

QUICK FACTS	M609XA
Spindles	6
RPM	4000-8000 adjustable
Total motor horsepower	148hp
Working width	15-230mm
Working thickness	10-150mm
Feed speed	6-30M/min
Weight	7000kgs

TECHNICAL SPECIFICATIONS	M609XA
Working width	15-230mm
Working thickness	10-150mm
Working length (min. individual piece)	800mm
Working length (min. end to end)	300mm
Cutting circle, first bottom	125-203mm
Cutting circle, vertical spindles	125-203mm
Cutting circle, horizontal spindles	125-203mm
Weight, uncrated	7000kgs
Weight, crated	7700kgs
Feed speed	6-30M/min
Feed adjustment	elec variable
Feed motor, auxiliary cooling fan	included
Infeed table length	2M
Infeed table surface	chrome
Table lubrication pump	Automatic (Waxilit)
Main table plates surface	chrome
Number of top feed rollers**	eleven (11)
Number of bottom table rollers	five (5)
Short stock feeder (Reduced distance gearbox)	included
Telescopic feed rollers shaft opposite near side	included
Main fence height	63mm
Spindle brakes	included
Spindle brakes type	inverter
Axial adjustment of vertical spindles	80mm
Axial adjustment of horizontal spindles	40mm
Spindle diameter (stocked)	1 13/16"
Spindle clamping	ProLock
Cabin lights	LED
Hand held pendent	included
Rapid setup hoods	Both top and near side
Pressure elements, chipbreakers	pneumatic
Pressure elements, pad pressure	pneumatic
Pad pressure element segments (first/last)	one
Cassette style pad shoe for last top	optional
Lateral side roller pressure at infeed table	pneumatic
Lateral side pressure roller opposite fence spindle	pneumatic
Human interface	9" color (Siemens)
Memory sets	500
Spindle displays	3.5" LCD
Motorized spindles	2A, 3A, 3R, 4R, 5R
Tooling, first bottom cutter length	240mm
Tooling, first bottom type	TCT helical
Other processing tools included	optional
Multiple length of chipbreaker shoes, each top	three (3) sets

**Includes short stock feeder

For more information on KENTWOOD: 616.698.7500 | www.stilesmachinery.com/KENTWOOD

KENTWOOD™

stiles