

Combined universal machine

**C26 genius**

*MiniMax*

# Your favourite hobby deserves a professional combined machine

The combined universal machine for the advanced DIY woodworker

## C26 genius

### The sliding table

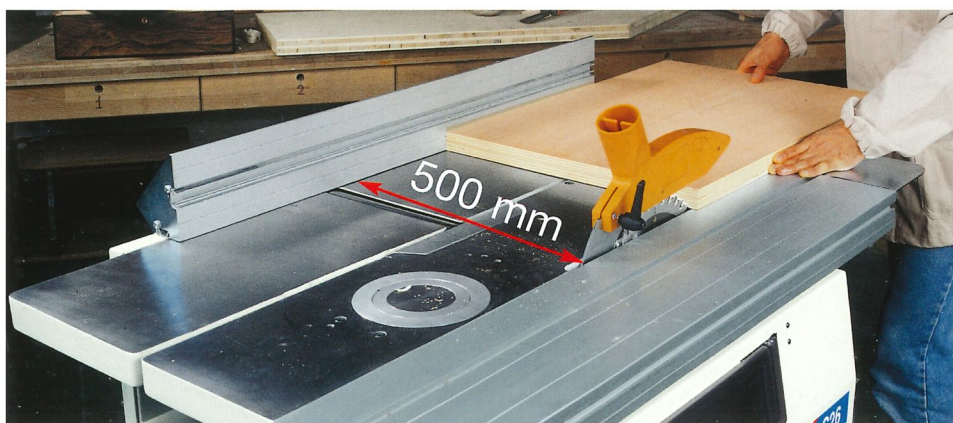


**Unique in its class:** the anodised-aluminium sliding table with a stroke of 1070 mm runs **parallel to the blade**, thus ensuring better cutting precision. The sliding table is supplied complete with a support and a fence which can be used for jobs on both the circular saw and spindle moulder.

### The saw unit



**Tilting saw unit** with a 250 mm blade and a maximum cutting depth of 80 mm. The saw will cut panels 500 mm wide at the rip fence.



C26 genius, machine in CE base configuration

**3 2Hp 1,5kW 50Hz motors**, available both three or single phase

**The C26 genius worktables are made from cast-iron** and are strongly ribbed. The base is electro-welded steel. These are features which guarantee rigidity and the complete absence of vibration. The base of the C26 genius can also be separated into two parts to make it easier to move around from one place to another.

C26 genius

## Surfacer unit

The surfacer unit has a cutter block with two re-usable knives. The Tera disposable knife system with three knives and rapid clamping is available as an option. The maximum surfacing width is 260 mm.

C26 genius also has a multi-purpose fence for use with both the circular saw and the spindle moulder. The fence is an anodised aluminium extrusion and a support with clamps. The fence can be positioned at 90° or at 45°.



## Thickener unit

The thickener unit can handle wood up to 150 mm thick thanks to its efficient feed system. The thickener table opens towards the inside of the machine. This feature keeps the machine compact and makes machining easier.



## Spindle moulder unit

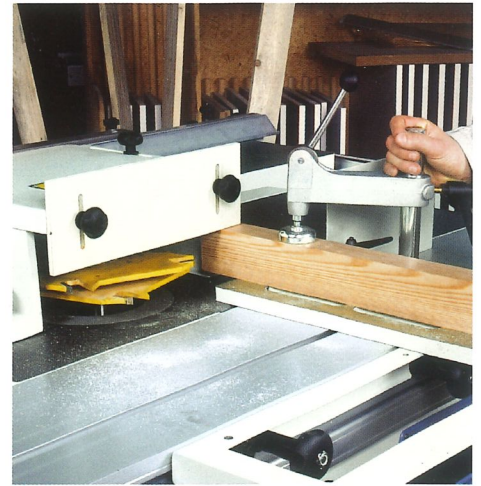
The **spindle moulder unit** has two speeds (4000 and 6500 rpm) to ensure the maximum flexibility in tool use. The machine has a spindle moulder hood with micrometric adjustment – a feature which is particularly useful on profiling jobs. Thanks to the aluminium carriage and the right speed setting, tenoning is easy, too.



# C26 genius

## Option units

**Frame** for squaring large panels and wood components. The graduated rule makes it easy to make cuts at any angle. The squaring frame is complete with an extending guide, two stops and a pendant support arm.



**Tersa cutter block** with three knives.

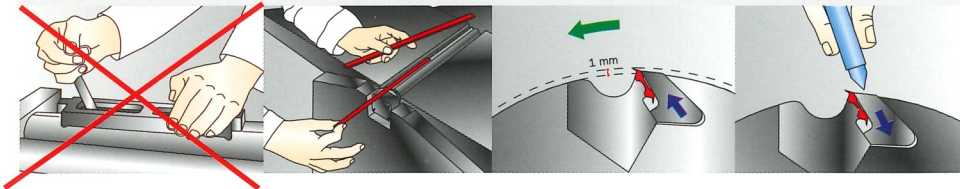


The revolutionary Tersa system for fitting the knives to the cutter block eliminates setup times completely.

Inserting the knives in the cutter block is easy.

When the machine is started, centrifugal force locks the knives in position. Knife projection from the cutter block is adjusted automatically.

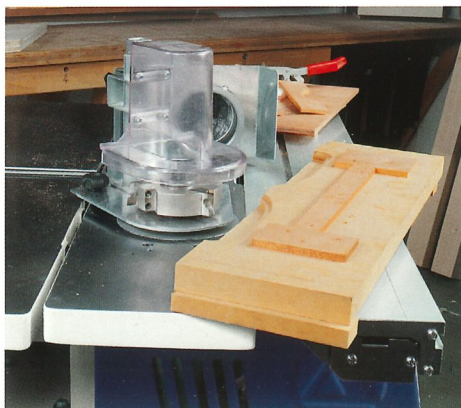
Just a few seconds is all it takes to change the knives. Just release the clamping strips.



**Tenoning table and hood.** This enables precision tenoning with the spindle moulder in complete safety. Cutting tools with diameters up to 210 mm can be used.



Slots, recessing and mortise and tenon joints are easy with the **slotter unit**.



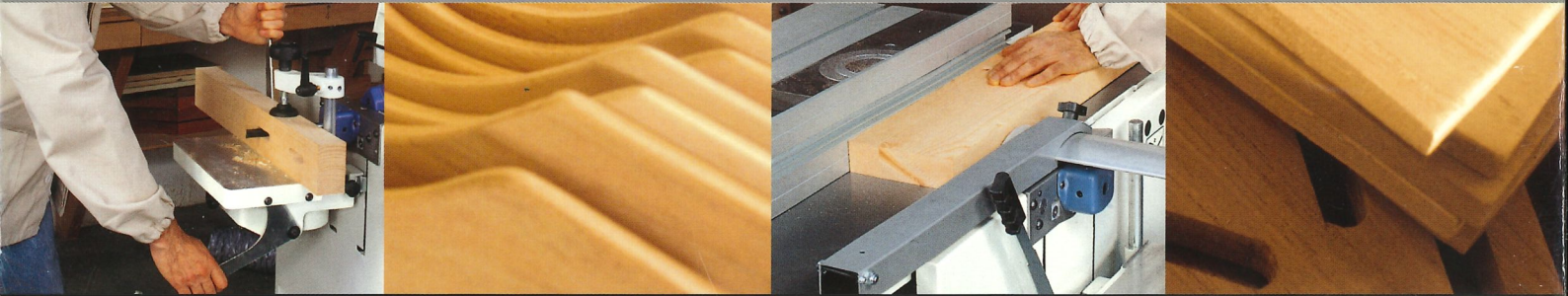
**Spindle moulder guard** for moulding shapes and curved profiles.

**Three single-phase motors, 2 HP (1.5 kW) 50 Hz (60 Hz also available)**

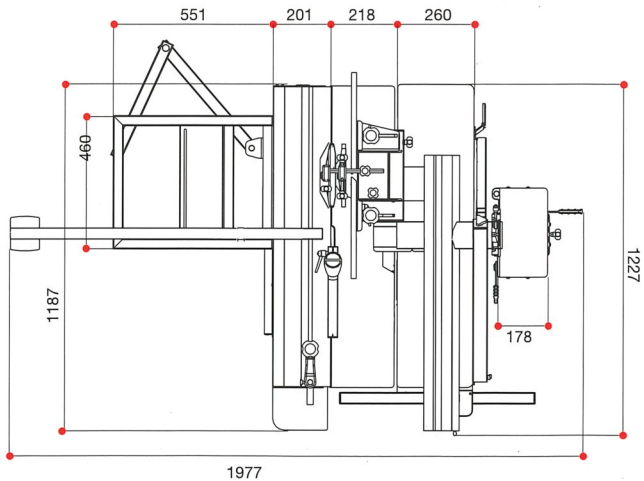
**Wescott self-centering chuck** for machining with the slotter unit.

**Castor kit.** The castors make the machine easy to move around and retract into the base when not in use. Raising and lowering the castors is easy. Just press the lever with your foot.

Technical specifications		C26 genius	
<b>Surfacer unit</b>			
working width of surface tables	mm	260	
total length of surface tables	mm	1040	
max. stock removal	mm	3	
number of knives	No.	2	
multi-purpose saw/planer fence	degrees	90-45	
Knife size	mm	260x25x3	
<b>Thicknesser unit</b>			
cast-iron worktable dimensions	mm	260x450mm	
max. stock removal	mm	3	
thicknesser feed speed	m/min	6	
min/max. working height	mm	3/150	
<b>Circular saw</b>			
saw-spindle moulder worktable dimensions	mm	224x1040	
saw blade tilt angle	degrees	90-45	
max. blade diameter		mm 250	
max. blade height above table at 90°	mm	80	
aluminium sliding table stroke	mm	1040 (1070)	
cutting width at rip fence	mm	500	
<b>Spindle moulder</b>			
Spindle working length	mm	75	
Spindle speed	r.p.m.	4000-6500	
Max. diam. of tool retractable under table	mm	150	
motor power (No.3 motors)	hp / kw / hz	2 / 1,5 / 50	
Net weight basis machine	kg	250	
<b>Mortiser</b>			
worktable	mm	310x150	
vertical stroke	mm	150	
crossways stroke	mm	70	
lengthways stroke	mm	90	



Overall dimensions **C26 genius**



SINCERT



SISTEMA DI GESTIONE CERTIFICATO  
REG. N. 091/C  
UNI EN ISO 9001:2000

SCM GROUP spa - Minimax  
Via Casale, 450  
47827 Villa Verucchio RN Italy  
Tel.+39 0541 679580 - 679578  
Fax +39 0541 674273  
e.mail: info@minimax.sm  
www.minimax.sm

*MiniMax*