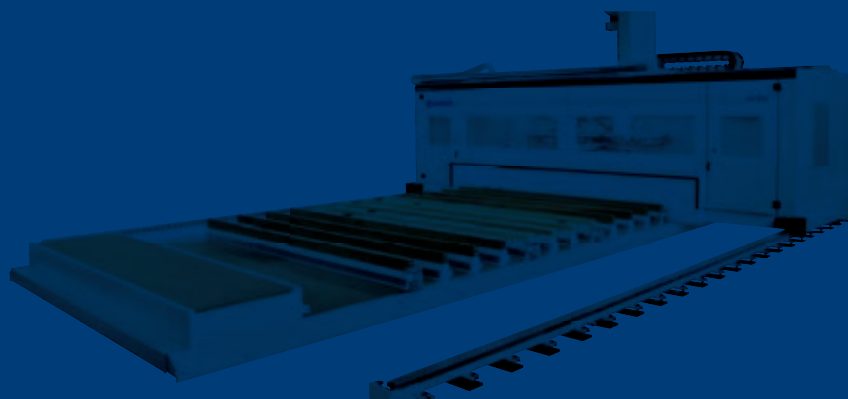


AREA



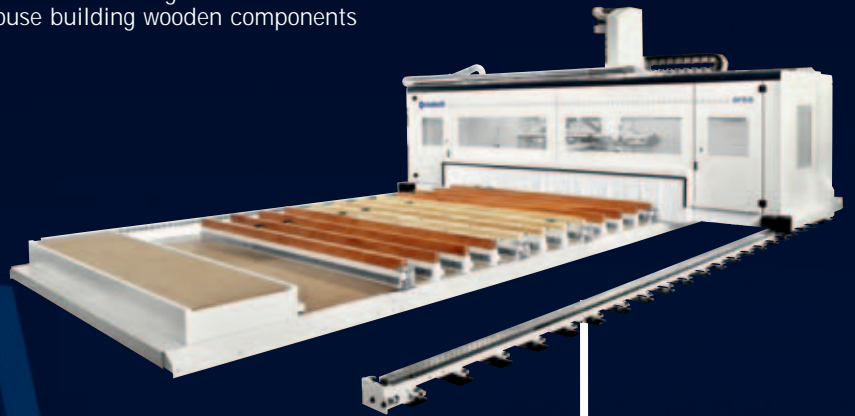
AREA CNC Machining centre for house building wooden components



OUR TECHNOLOGY BEHIND YOUR IDEAS

Area

AREA CNC Machining centre
for house building wooden components



3D DESIGN

PROGRAMMING

RIP SAW

PLANING

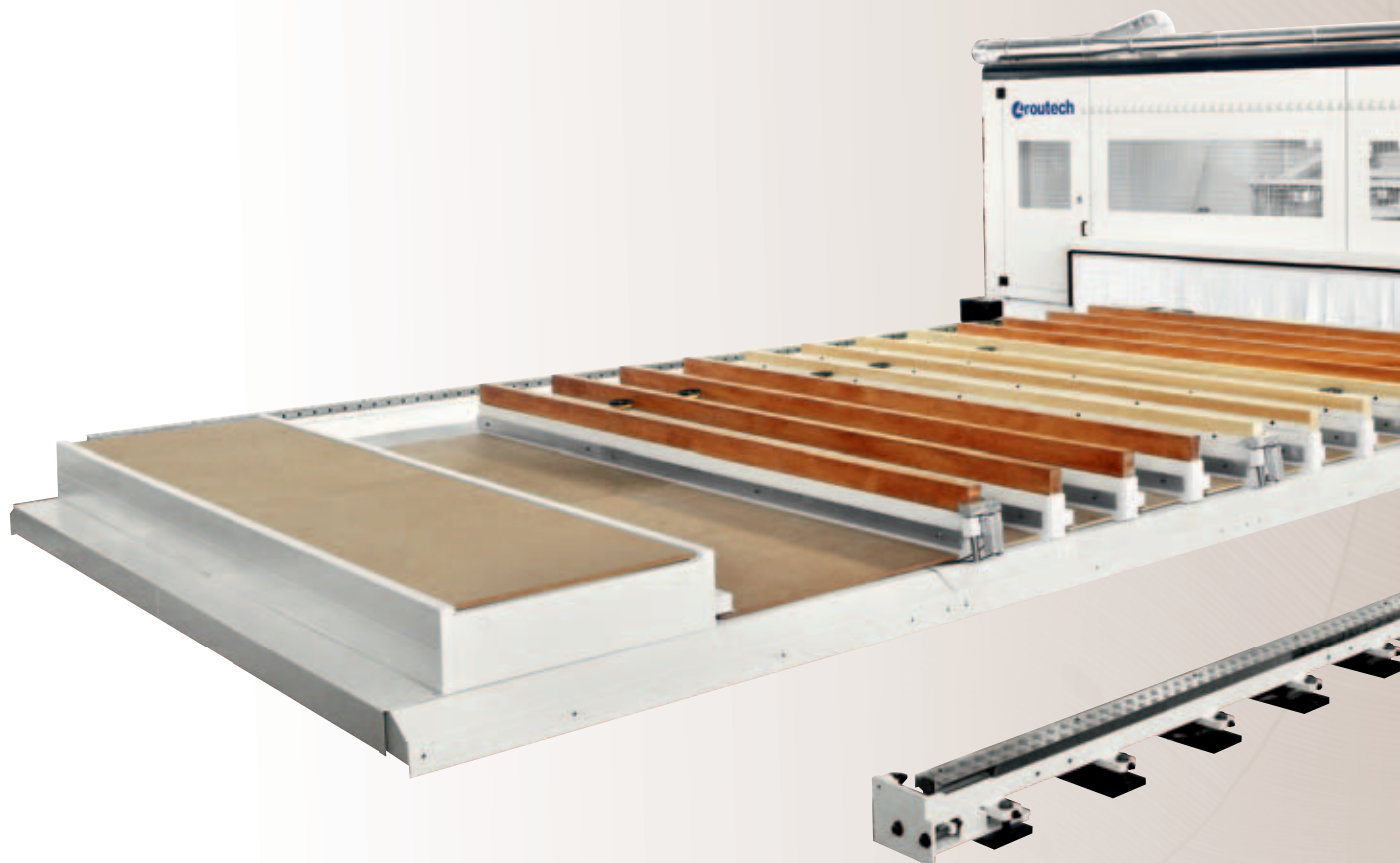
ASSEMBLING

3-AXES CNC DRILLING AND ROUTING

5-AXIS CNC DRILLING AND ROUTING

area

INNOVATION AND TECHNOLOGY FOR HOUSE BUILDING WOODEN COMPONENTS





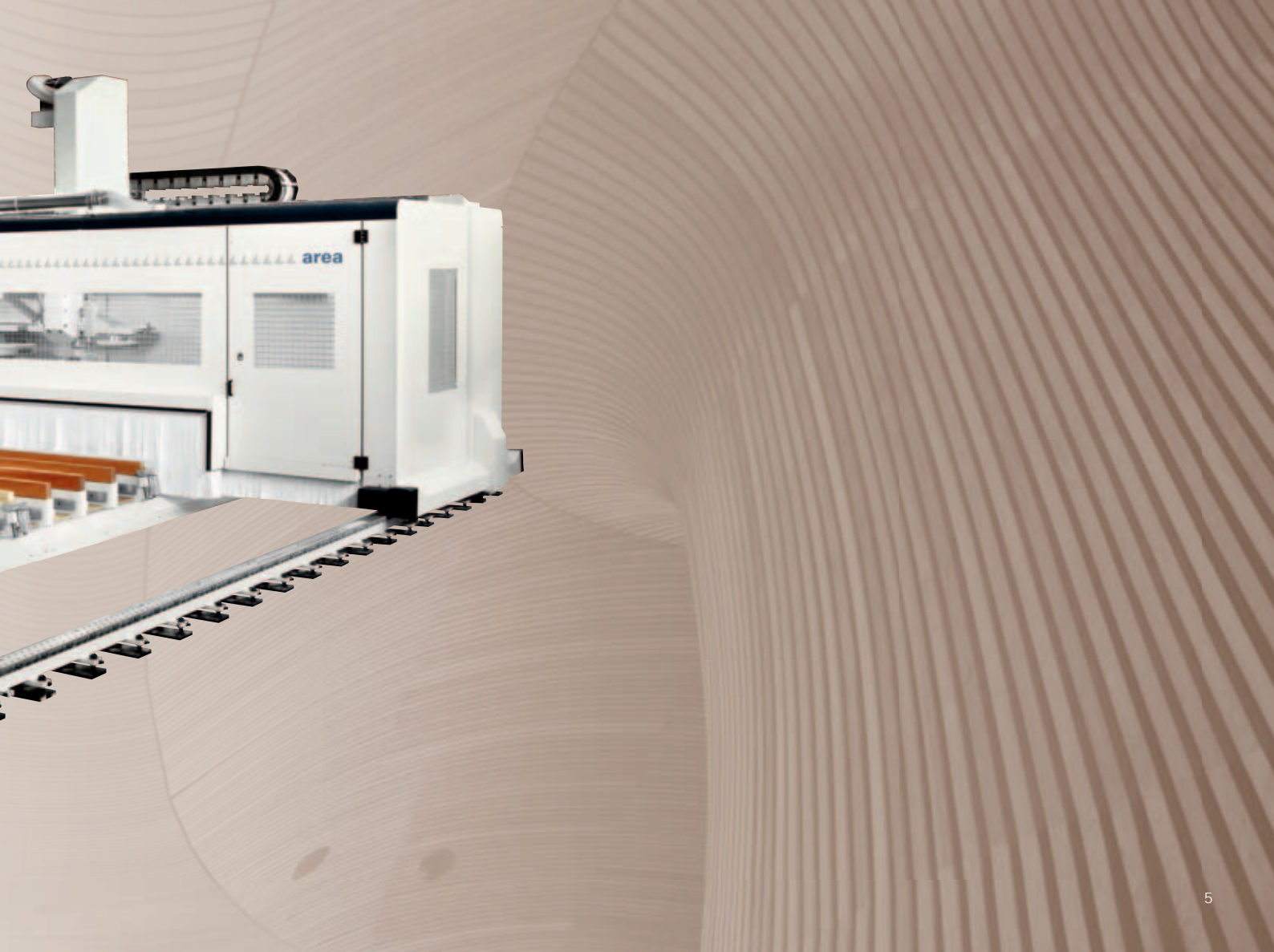
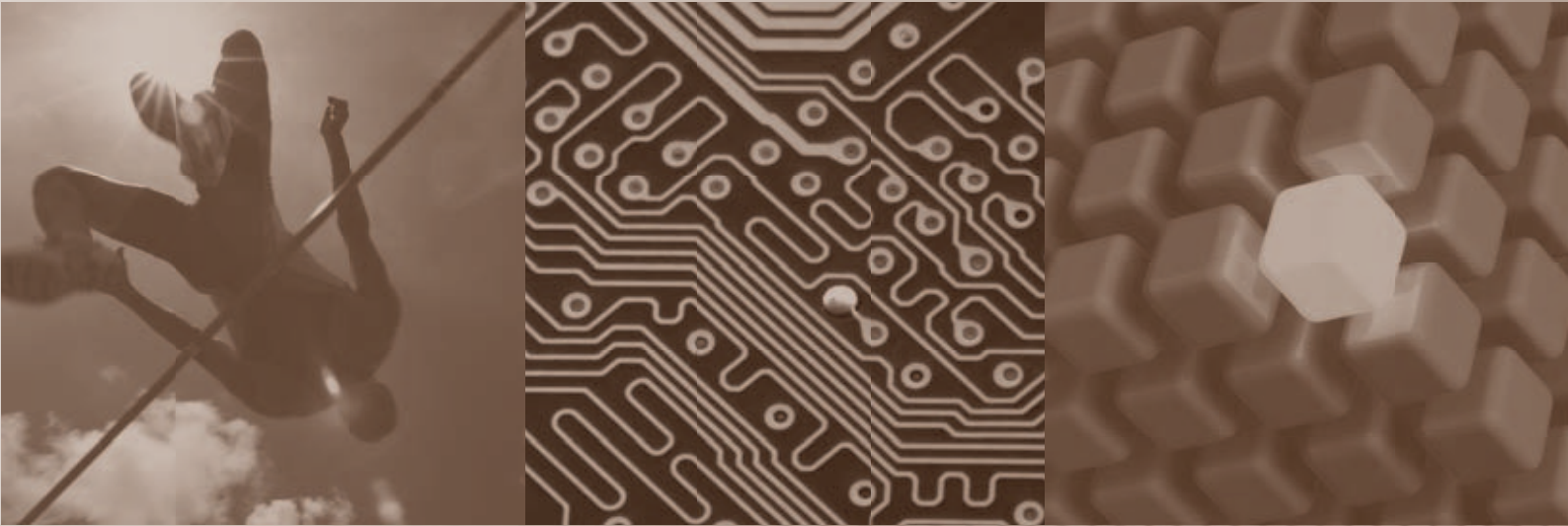
Top level power and rigidity



A new project for a new way of producing



Modular structure with exclusive solutions





Top level power
and rigidity

SPECIFIC MACHINING HEADS

- ◀ AREA is equipped with 5 interpolating axes machining head specifically designed for this sector use. Power, precise and flexible the heads can execute every type of machining operation allowing the maximum rigidity in any operating condition.



The peculiar structure and high power at low rpm allow use of blades up to 1050 mm in diameter



TOOLS ALWAYS ON BOARD

area



The magazine at 12 stations has been designed to accommodate all the tools needed to complete the entire working cycle. Anchored to the mobile gantry allows to have on board always the right tool to speed up execution of the entire workpiece program.

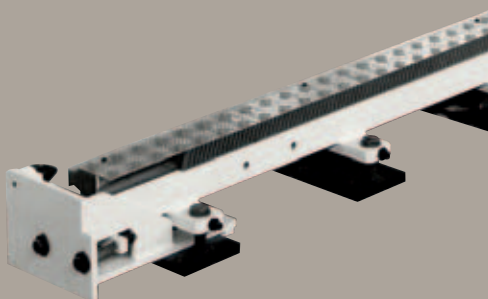
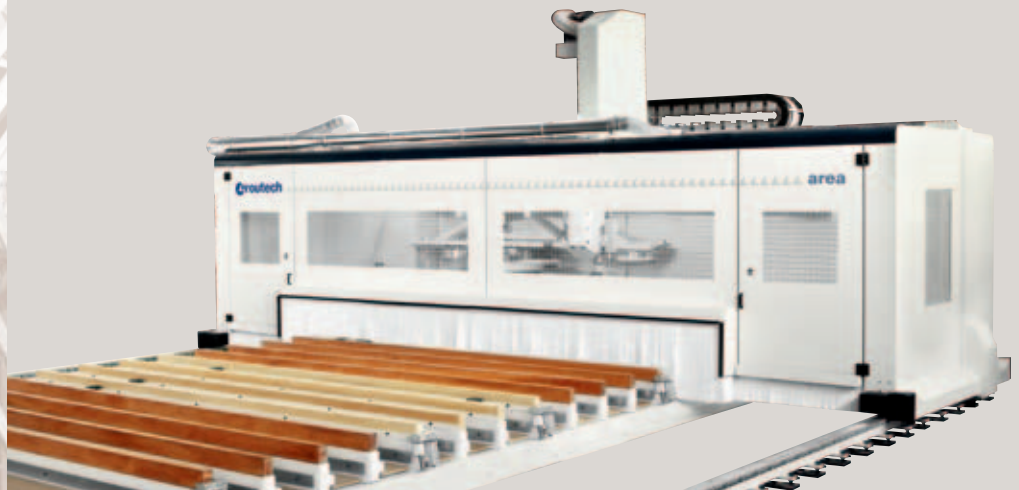




Modular structure with exclusive solutions

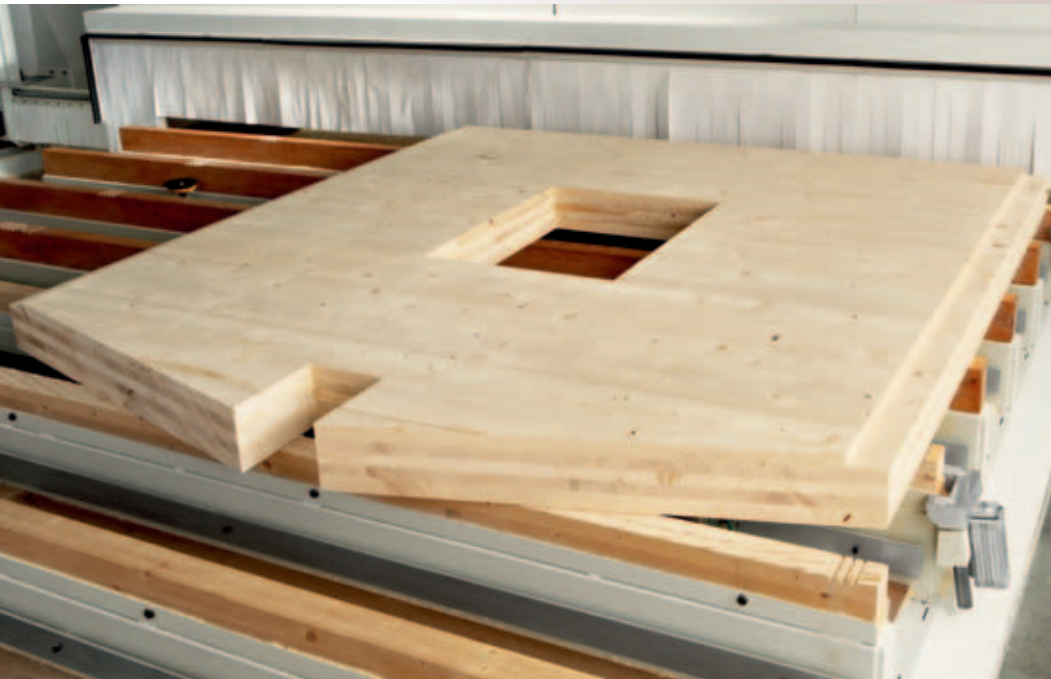
The machine design is based on a modular system that allows you to customize the size of the worktable along the X axis to reach 50 mt to meet the needs of production.

TECHNOLOGY FOR MAXIMUM EFFICIENCY



The solid and robust structure moves on rails precision low vertical profile to ensure high standards of accuracy and allow the operator easy access to climb over the work area with ergonomics.
The protection cabin completely closes the work area for a drastic reduction of dust and noise and has a large transparent surfaces for total control of operations.

area



- ▶ The structure of the worktable is anchored directly to the floor while the upper part is composed of material to work directly from the machine to have a flat surface and a constant recovery when scratched from use.

- ▶ The placement of bulky and heavy items such as walls can be difficult and laborious; the AREA laser system simplifies this project with precision on the workpiece the tool run allowing the operator to center the piece on the program already in place

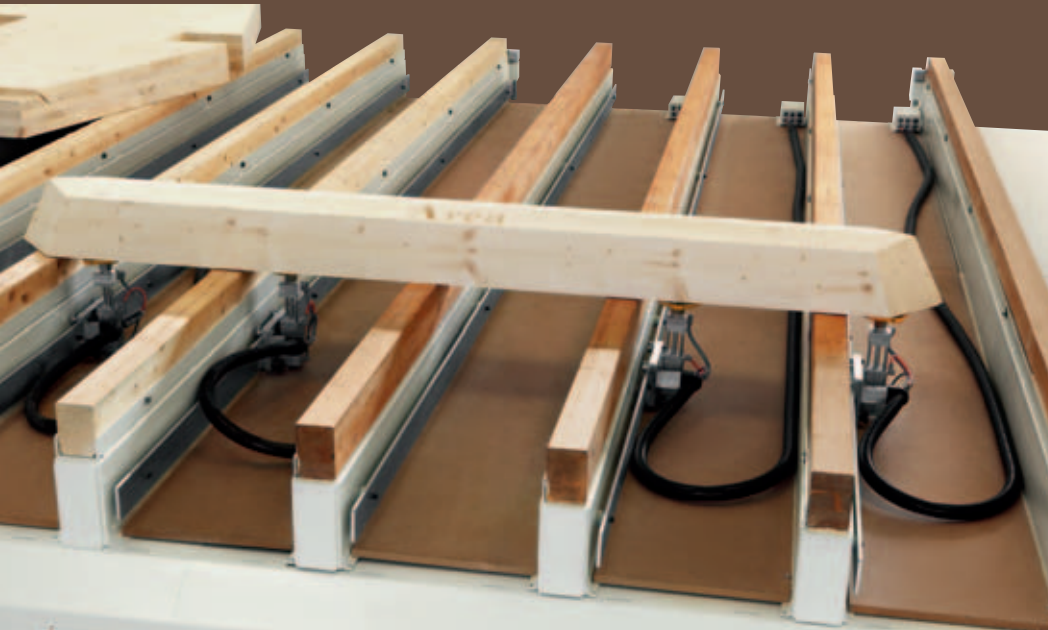




A new project
for a new
way of producing

PRODUCTION SOLUTIONS FOR EVERY NEED

AREA is a machining centre designed to revolutionize the process of structural walls and wooden beams are shaped. It is equipped with a technology that looks to the future and permits figures and profiles of any shape with ease to bring to market new solutions and competitiveness.



▲ The vacuum system allows the use of vacuum suction cups automatically activated to stop small workpieces with small surfaces.

▼ Cut up pieces of high thick blade with vertical or inclined axis.

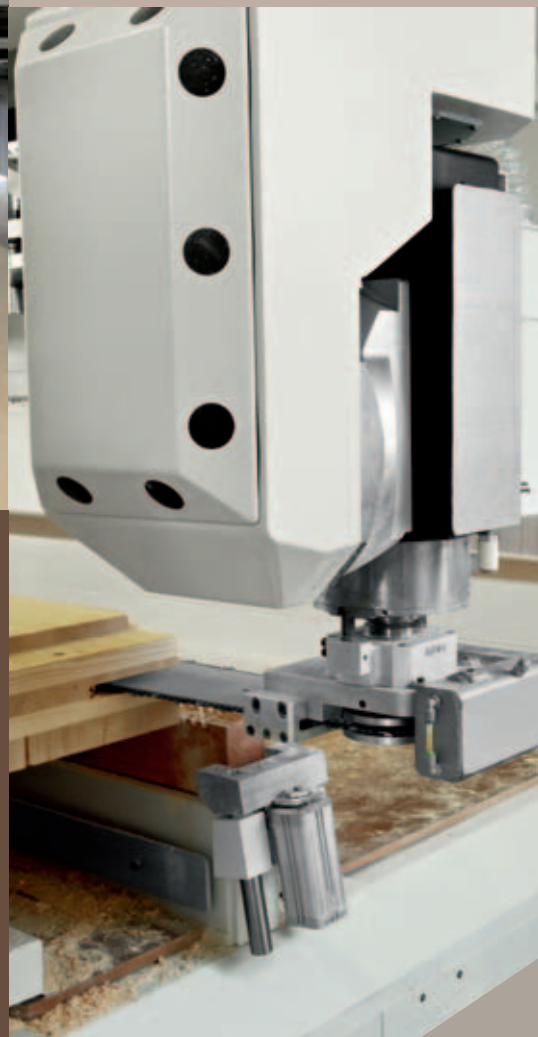
▲ The worktable has been designed to meet different needs. A number of options allow to refer and secure with safety and precision elements of different shapes and sizes.



area

The electrospindle designed and built by SCM Group allows machining with cylindrical or in shape tools, of small and large dimension with the ability to manage heads for dedicated applications.

With the aggregate "motor-saw" are produced faster opening angles of 90 ° and deep grooves on all sides of the wall.



◀ Every detail has been designed with care, cleaning of the area surrounding the work area makes it safer and easier to operate the machine.

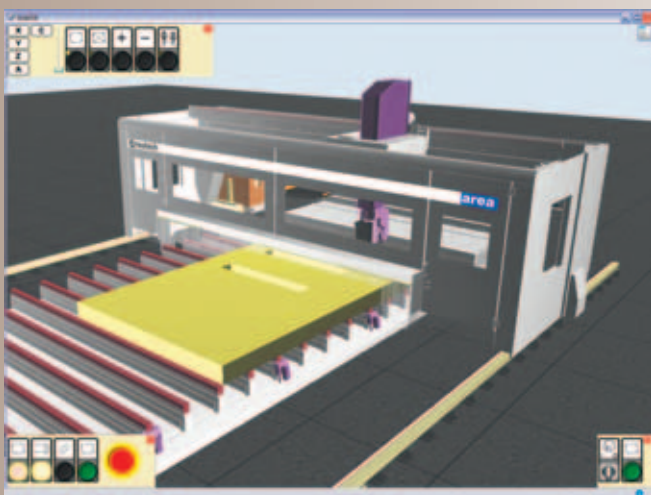
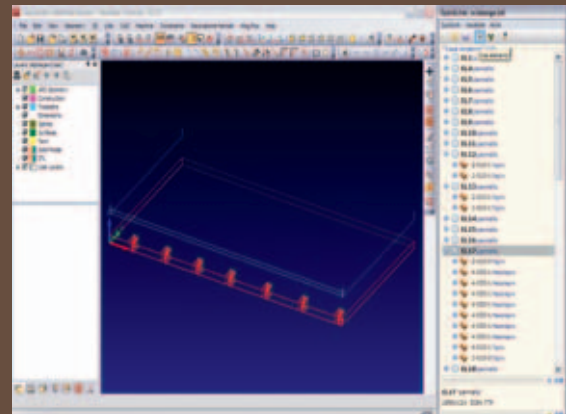
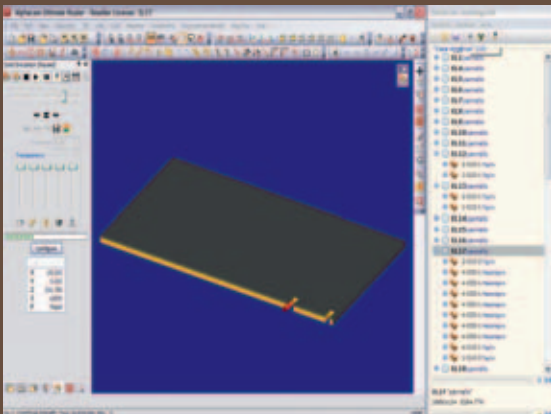
area

AREA QUICK LINK: ADVANCED SOFTWARE TO SATISFY CUSTOMER NEED

The **AREA** project is designed to hit two major objectives:

- to introduce innovative solutions to modernize the production cycle,
- maximizing this new technology with software really easy to program.

Area Quick Link" born that way from the experience of the team of SCM Group a tool that allows you to interface with all the best CAD / CAM industry in the market, with a few clicks you pass by the import of the BTL to the piece implementation on the machine. It is not necessary to program the individual elements, the information comes from the CAD who designed the structure of the house and Area Quick Link does the rest.

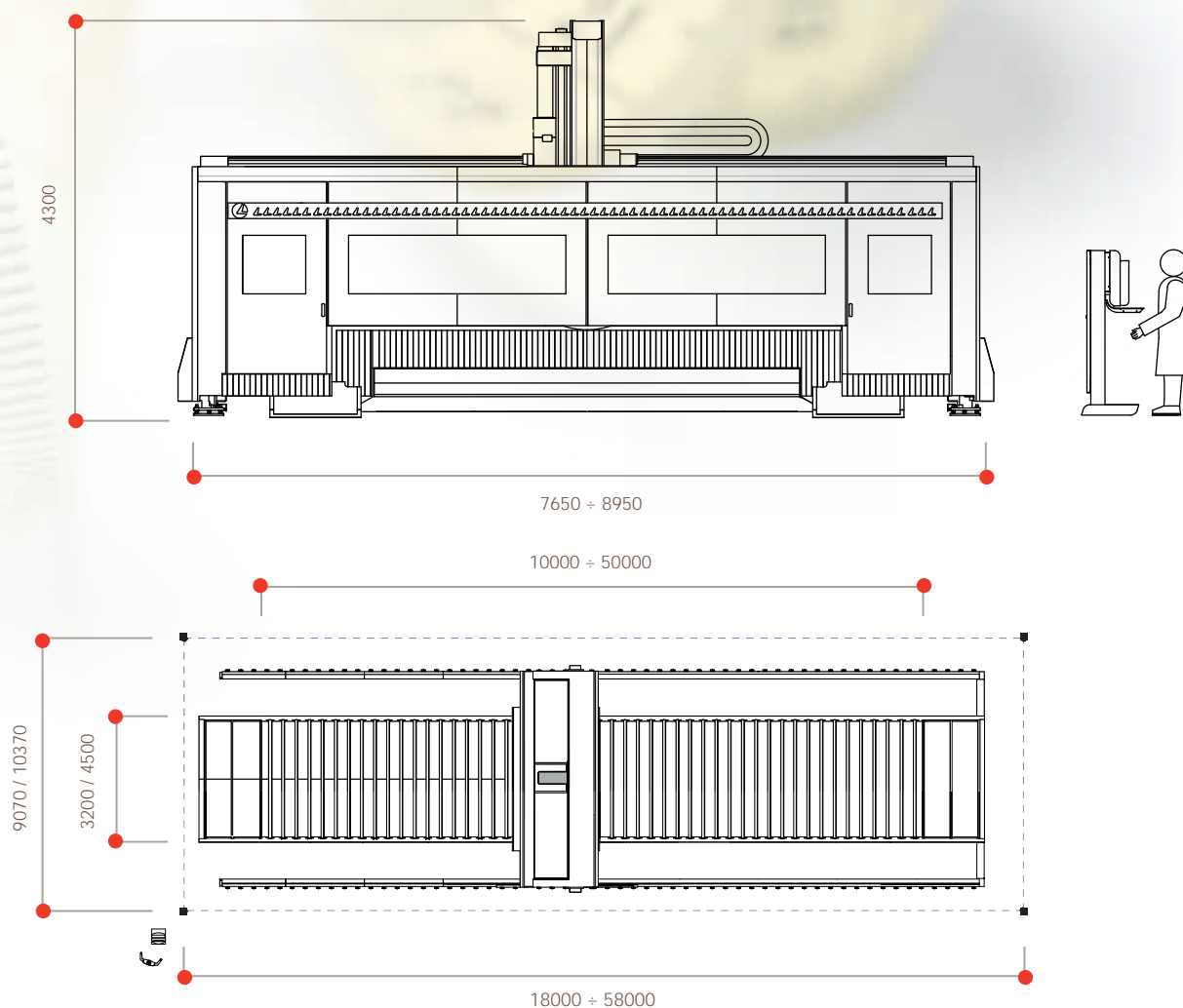


Area Quick Link also provides the user with the flexibility typical of machining centres through a series of functions that facilitate the creation and customization of programs.

- ◉ The station simulation designed by Routech allows you to watch directly on your PC real work happens in the machine to eliminate collisions and calculate the actual time that the machine uses to create the pieces.

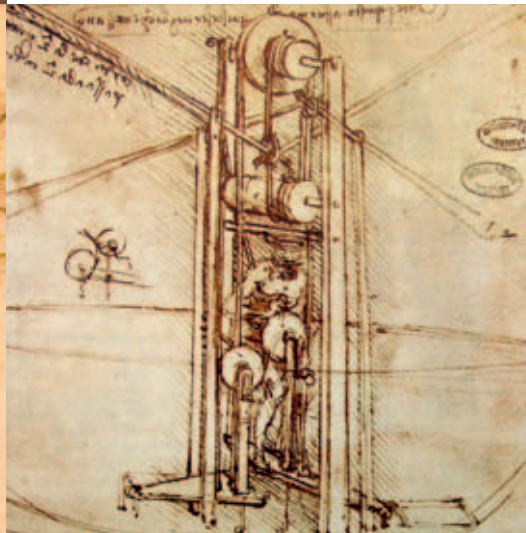
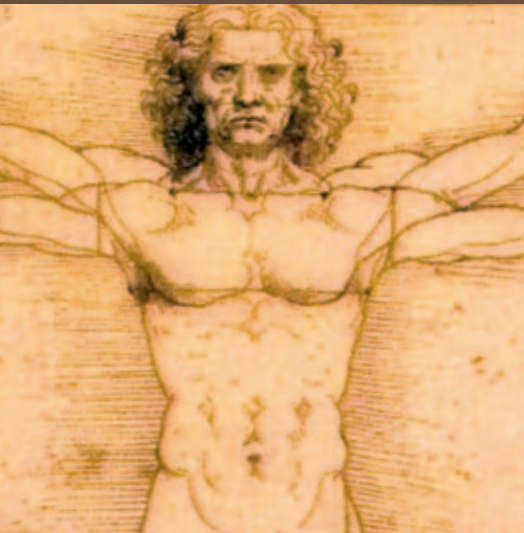
area

OVERALL DIMENSIONS



TECHNICAL SPECIFICATIONS

Routing unit with 5 interpolating axes	Tool chuck	Power
Prisma TLP	HSK 85 S	30 Kw
Prisma T	HSK 63 F	13 Kw
Working area	Length	Width
	da 10000 a 50000 mm	3200 mm
	da 10000 a 50000 mm	4500 mm



Scm group is a leading industrial group, in the design, production and distribution of technologically advanced solutions for processing a wide range of materials: wood, glass, plastic, marble, metal, composites.

With specialist brands in the different application sectors and centres of excellence qualified in industrial components, scm group is present for over 50 years in the 5 continents.

PASSION. It's the passion for our work. It's the central role of man, his creative genius, the spirit of initiative and the ability to work in a team.

TECHNOLOGY. Is the scientific rigour that transforms creativity in highly technological solutions, which are accessible and able to provide competitive advantages.

PERFORMANCE. Is the commitment that is transformed in results and success of our partners that rely on SCM Group solutions. It's being recognised as suppliers of "competitive advantages that last over time".

HIGH TECHNOLOGY FOR SOLID WOOD

housing



A complete range of innovative solutions
and processes for industry

- For over 40 years in the sector
- Leading customers worldwide.
- A team of highly qualified professionals
- Specific expertise in individual application sectors
- 3 production sites

The technical data can vary according to the requested machine composition. In this catalogue, machines are shown with options. The company reserves the right to modify technical specifications without prior notice; the modifications do not influence the safety foreseen by the CE Norms.





00L0036194D

Rev. n. 00 - 05/2011 - Acanto comunicazione - Olimpia