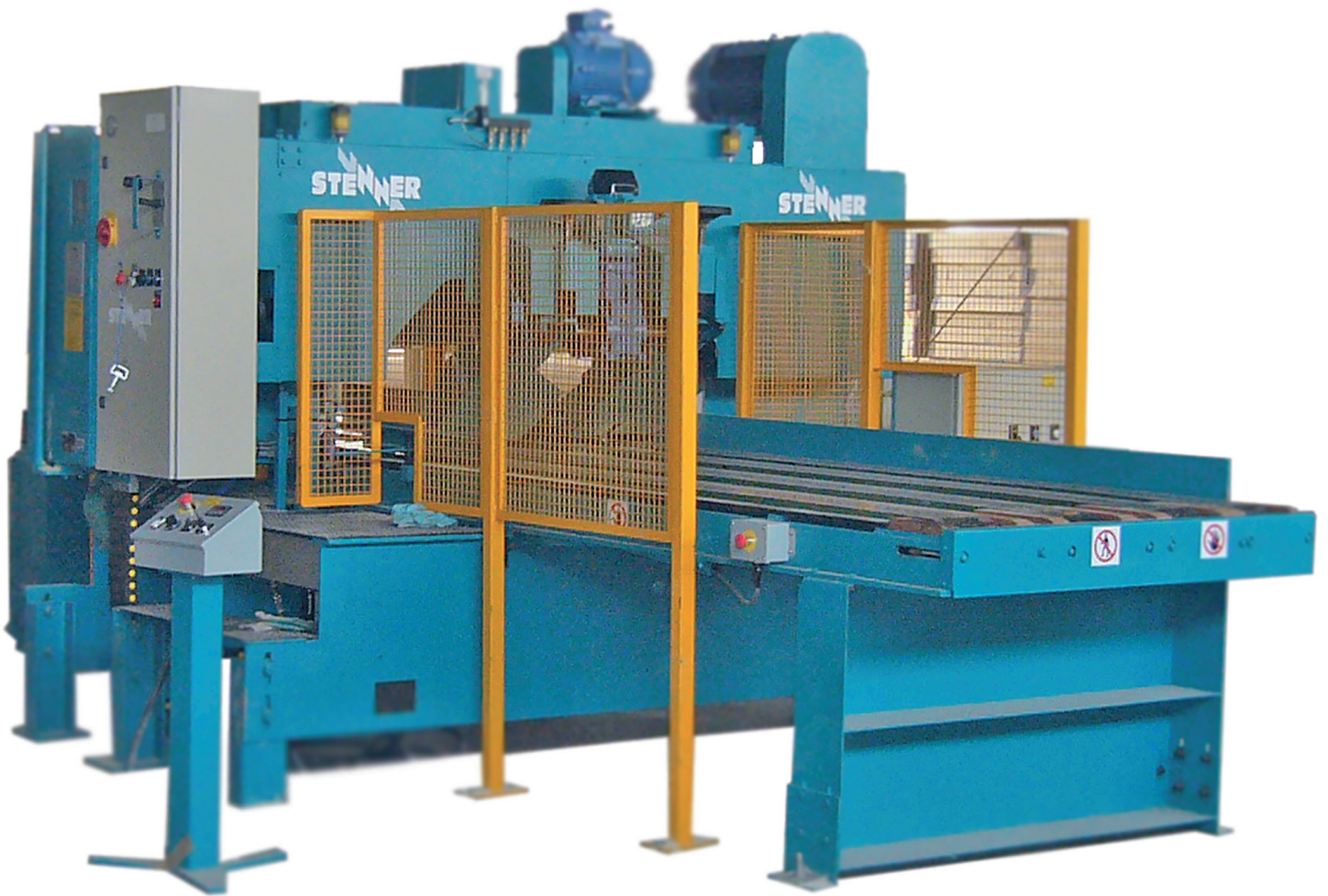


# WIDE MOUTH HORIZONTAL RESAW



## WIDE MOUTH RANGE

PRECISION SAWING OF LAMINATED BEAMS AND PANELS FOR  
WORKTOPS, WARDROBE BACKS AND DRAWER BOTTOMS  
AND FOR SPECIALISED NON-TIMBER APPLICATIONS

# MULTI-HEAD HORIZONTAL RESAW

MHS 9

MHS 10

MHS 12

MHS 137

World leading solution for precision cutting of wide material.



Machines can be painted in customers' corporate colours if required

# MHS

Stenner's range of MHS Wide Mouth horizontal resaws was developed for precision sawing of laminated timber beams and panels as well as polystyrene blocks and plastics.

Single- or multi-head systems are tailored to customers' requirements for applications including the production of worktops, wardrobe backs and drawer bottoms.

Combining accurate thin kerf blade technology with efficient power consumption, the MHS range offers productivity and economy, maximising the yield from the raw material.

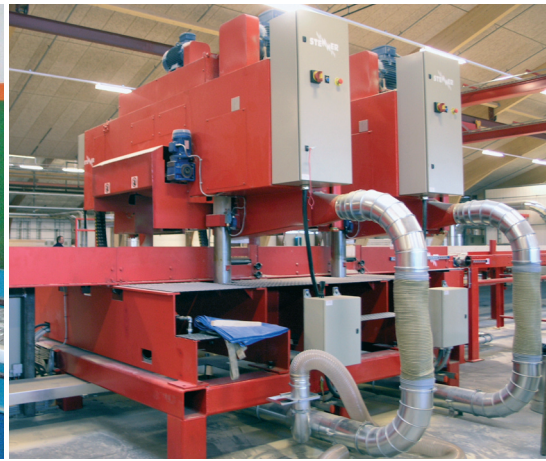
The speed of the automated roller feed is steplessly variable and synchronised with the overhead feed rollers, which provide excellent control on differing thicknesses and types of material.

The robust construction provides the strength and stability needed for precision cutting of the large and heavy laminated blanks, and together with modern control systems, easy maintenance, high operational safety and strong after-sales support ensures solid performance over a long service life.

Stenner's MHS range has proved popular worldwide, with more than 700 saw units installed in diverse applications.

To join these satisfied customers, contact us to discuss your requirements and find the right MHS solution for your needs.





## MACHINE SPECIFICATIONS

	MHS 9	MHS 10	MHS 12	MHS 137
<b>BANDSAW BLADE</b>				
Thickness (recommended)	1.07mm/19g - max 0.8mm/21g - min	1.25mm/18g	1.25mm/18g	1.47mm/17g
Width (max)	100mm	130mm	150mm	200mm
<b>PULLEY DIAMETER</b>	915mm	1050mm	1220mm	1370mm
<b>WIDTH OF RAW MATERIAL (MAX)</b>	450mm	650mm 900mm 1050mm	650mm 900mm 1050mm	650mm 900mm 1050mm
<b>OPENING</b>				
Saw to slat chain bed (std)	305mm	305mm	305mm	460mm
Feed rolls to saw line	290mm	305mm	305mm	460mm
<b>FEED SPEEDS (VARIABLE)</b>	5-20m/min	7.5-30m/min	7.5-30m/min	7.5-30m/min
<b>MAIN MOTOR (STD)</b>	22kW	37kW	45kW	75kW
<b>CLEANER FLUID CAPACITY</b>	5 litres	5 litres	5 litres	5 litres
<b>WORKING (CHAIN BED) HEIGHT</b>	800mm	800 mm	900mm	900mm
<b>SIZE OF MACHINE</b>				
Height	2700mm	2900mm	3200mm	3650mm
Width (twin track - doors closed)	2720mm	3600mm	3350mm	5420mm
Width (twin track - doors open)	4240mm	4600mm	5000mm	6390mm
Length	5200mm (first saw unit)		1200mm (each additional unit)	
Weight (approx net/head)	2400kg plus tracks	4000kg plus tracks	4750kg plus tracks	13000kg plus tracks
<b>PNEUMATIC SUPPLY REQUIRED</b>	Yes	Yes	Yes	Yes
<b>HYDRAULIC SUPPLY REQUIRED</b>	No	No	No	No

# MHS

## Sawguides

Low friction pressure sawguides of either a disposable or remachinable design provide the excellent blade stability required for accurate cutting. Remachinable sawguides are fitted as standard on the MHS 137.

## Sawblade & Pulley cleaning

These machines are fitted with a solenoid-controlled drip feed cleaning system to lubricate the felt pads. In tandem with scrapers fitted to the pulleys, the felt pads ensure the cleanliness of both the pulleys and the sawblade.

## Saw straining

Strain is applied to the sawblade by a pneumatic cylinder, which applies force via a linkage when the lever is operated. For safety purposes a low pressure switch is incorporated, which automatically removes power to the main drive motor power (so the machine stops running) if pressure drops to an unsatisfactory level.

## MHS options

Remachinable sawguides (std on MHS 137)

Stenner spray lubrication system  
(automatically and effectively lubricates the top and bottom pulleys and the sawblade)

Remote control desk

Electric rise and fall of saw unit (MHS 9) or multi-axis positioning system with keypad entry

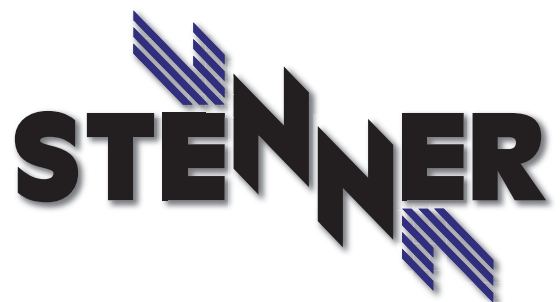
Ammeters to measure load on main motor

Sawblade deviation detector

Frequency control of sawblade speed

Programmable feed speed with slow speed on entry to cut then ramp up to maximum feed speed

Stenner has a policy of continuous improvement and development and specifications are subject to change without notice. The company accepts no responsibility for discrepancies in information or illustrations contained in this brochure.



Stenner Ltd  
Blundells Road  
Tiverton  
Devon EX16 4JX  
United Kingdom

tel: +44 (0)1884 255700

fax: +44 (0)1884 257794

email: [stenner@stenner.co.uk](mailto:stenner@stenner.co.uk)

[www.stenner.co.uk](http://www.stenner.co.uk)