

CNC Gantry-Processing Centers Vantage 200

Nesting Solutions





Nest & More Vantage
 // German Technology



Configuration

- Standard: 12 HP (9 kW) HSK routing spindle
- Optional: 16 HP (12 kW) HSK routing spindle



Tool changing system

- 14-fold tool changer moving in X-direction
- Tool pick-up station



MATRIX table PRO

- High flexibility
- Different vacuum cups available as option



Vantage 200 – The power pack among our nesting solutions

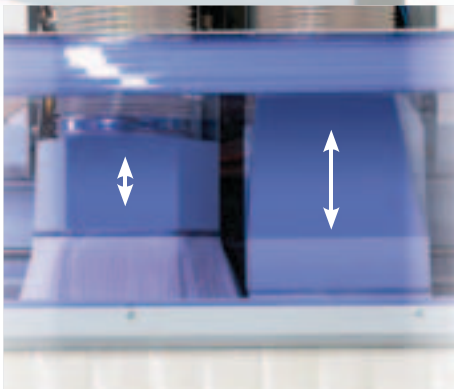
Our CNC processing centers are already offering the technology of the future.

Why? – Tradition. »Made in Germany« is our motivation and our commitment. Customers around the world have come to expect the highest standards from this quality label. And we meet those expectations.



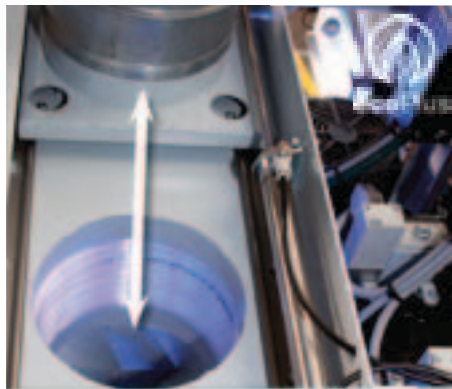
Highlights:

- Gantry style – for highest precision over the total working width
- Sealed »long-life« linear guiding system
- 2 synchronised digital servo-drives in X-direction
- High acceleration
- Vector speed X/Y 130 m/min
- The whole working field is reachable with all processing tools
- Electronic surveillance of all stops
- Efficient use of energy through high vacuum performances and simultaneously minor power consumption
- 12 HP (9 kW) HSK routing spindle (optionally: 16 HP (12 kW))
- 14-fold tool changing system incl. pick-up
- Software bundle for machine and PC (option)



2 CNC-controlled Z-axes in combination with drilling block

- Optimal dust extraction and bigger operative range for processing aggregates
- Weight distribution of the mass (processing aggregates) to the two Z-axes → more stability, higher processing quality



Program-controlled extraction connection

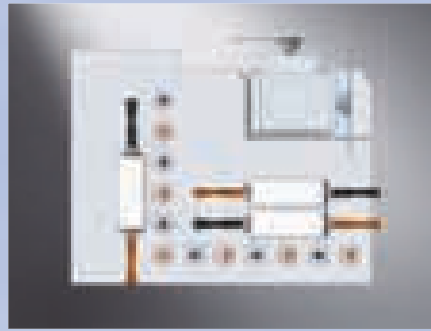
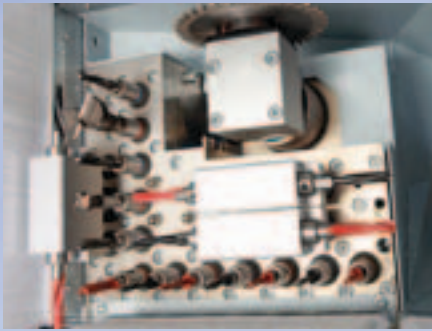
- For an optimum extraction behavior and economic use of extraction energy (**ecoPlus**)



Synchronous drive

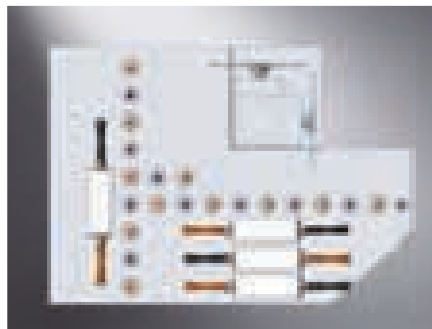
- 2 synchronised digital servo-drives in X-direction guarantee highest processing quality

Options



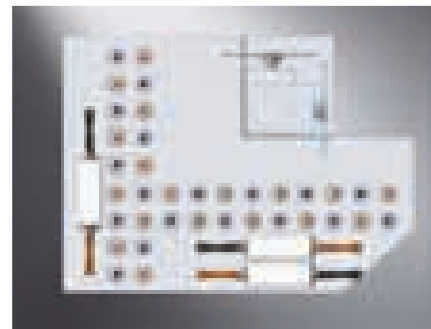
High-Speed 7500 Drilling block | 12 spindles

- 12 vertical drilling spindles
- 4 horizontal drilling spindles in X
- 2 horizontal drilling spindles in Y
- 1 grooving saw Ø 125 mm (0° / 90°)



High-Speed 7500 Drilling block | 21 spindles

- 21 vertical drilling spindles
- 6 horizontal drilling spindles in X
- 2 horizontal drilling spindles in Y
- 1 grooving saw Ø 125 mm (0° / 90°)



High-Speed 7500 Drilling block | 36 spindles

- 36 vertical drilling spindles
- 4 horizontal drilling spindles in X
- 2 horizontal drilling spindles in Y
- 1 grooving saw Ø 125 mm (0° / 90°)



High-Speed 7500

- Spindles with 1500 - 7500 RPM incl. the patented quick change system



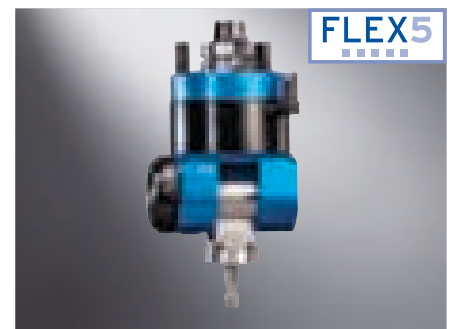
Tool length control

- Following the tool change a tool length control is carried out and compared with the integrated tool data file



C axis

- 0-360° – more flexible processing possibilities
- For the use of aggregates



FLEX5

- HIGH PERFORMANCE aggregate for drilling, sawing and routing
- You save up to 5 individual adapter aggregates

Would you like something extra? Our options provide all opportunities for a perfect adjustment of your nesting machine to your requirements.



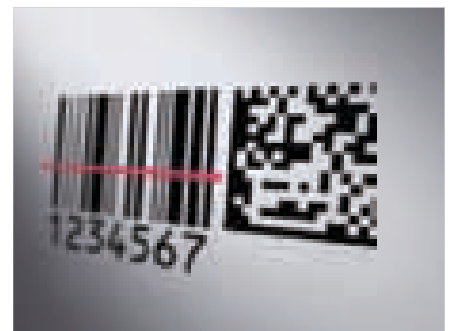
Matrix PRO | Clamping elements

- Different clamping elements available as option



Tool changer

- Tool changing system, fixed behind the machine, 28, 42 or 56 places



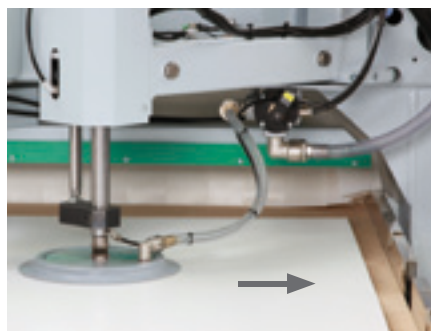
Barcode connection

- Barcodescanner / -software
- Supported barcodes:
 - 1D – Barcode
 - 2D – Data Matrix Code
- Every workpiece is exactly identified for the further workpiece flow



Vacuum lever for raw panel positioning

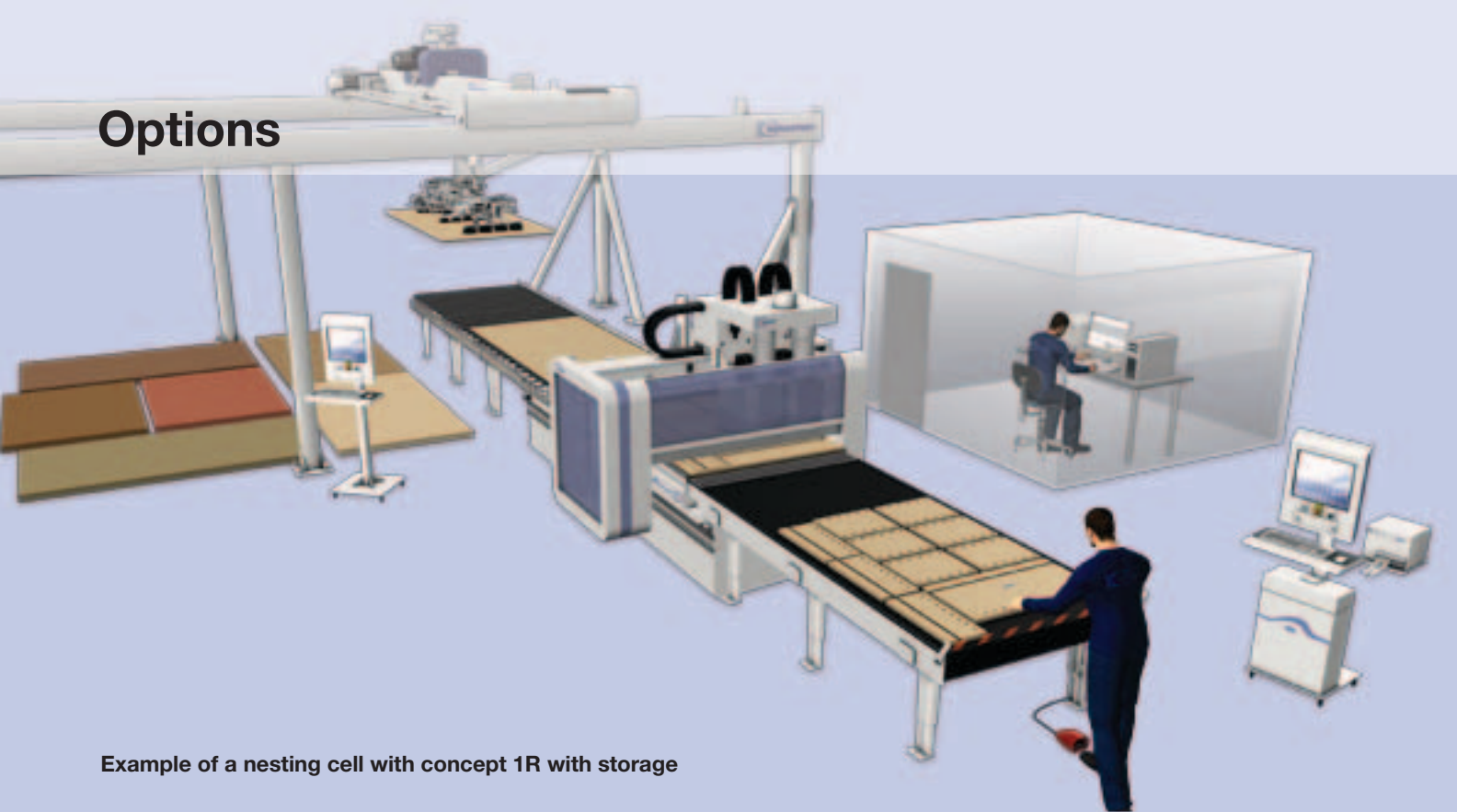
- For automatic positioning of the raw panels against the fence guide. Two sensors identify the achieved position at the fence and activate the vacuum.



Lowerable fence guide

- Suitable for safe outfeed of workpieces

Options



Example of a nesting cell with concept 1R with storage



Water-cooled routing spindle

- Incl. interpolating c-axis and high-performance cam box unit



Central vacuum system

- Up to 3 vacuum pumps can be centralised collectively



Tool box »STARTER KIT«



Cut Rite Nesting Terminal

- Incl. terminal, printer and PC-screen



Air-conditioning

- Air-conditioned switch cabinet



Vantage 200 with aluminium grid table

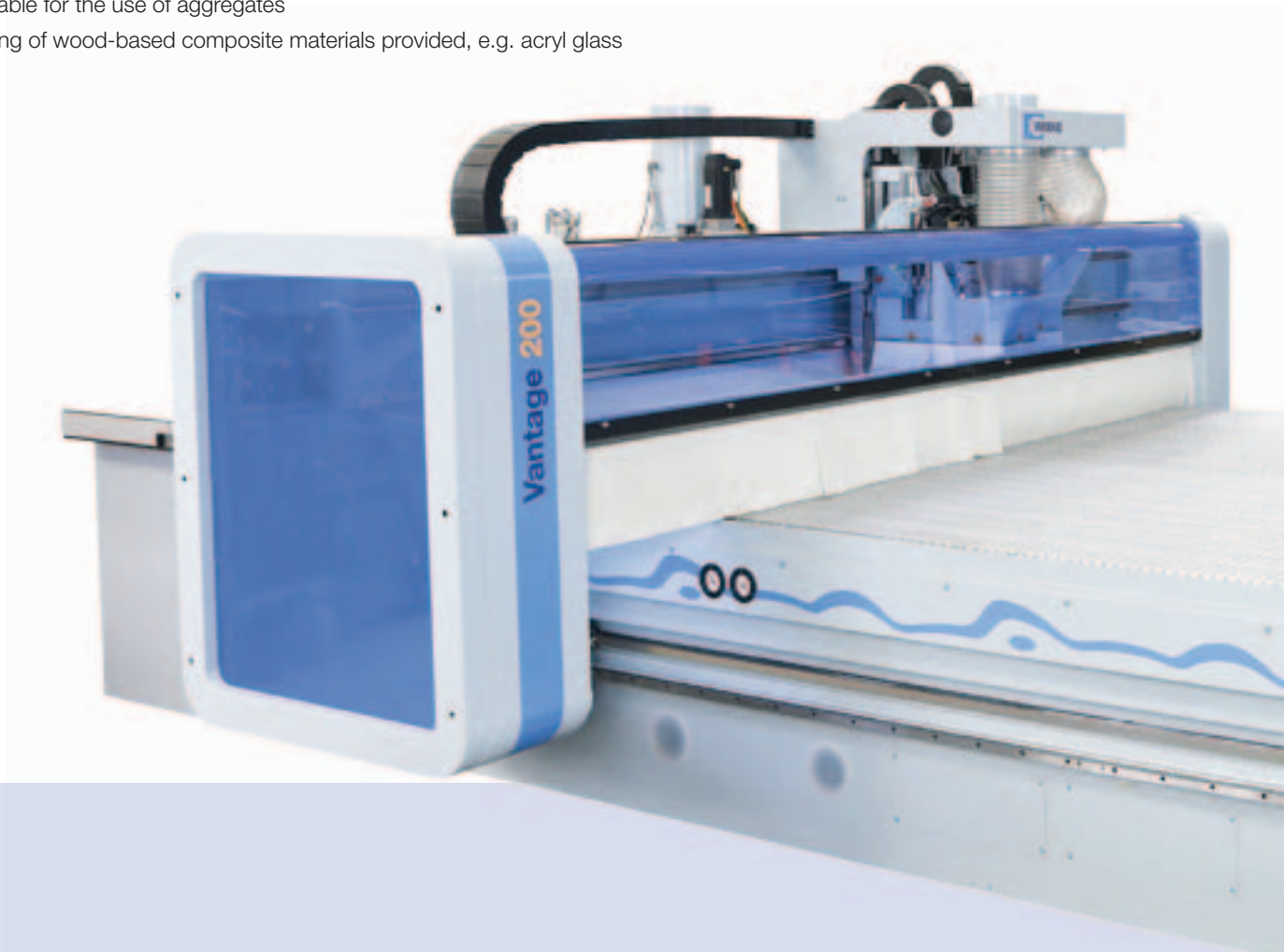
The optional aluminium grid table allows the positive locking of clamping elements and thus reliable fixture of the workpieces even under exposure to high hogging forces. By means of the table design, the vacuum transmission optimizes the distribution of the vacuum, reduces leaks and transmission losses and supersedes extensive installations.

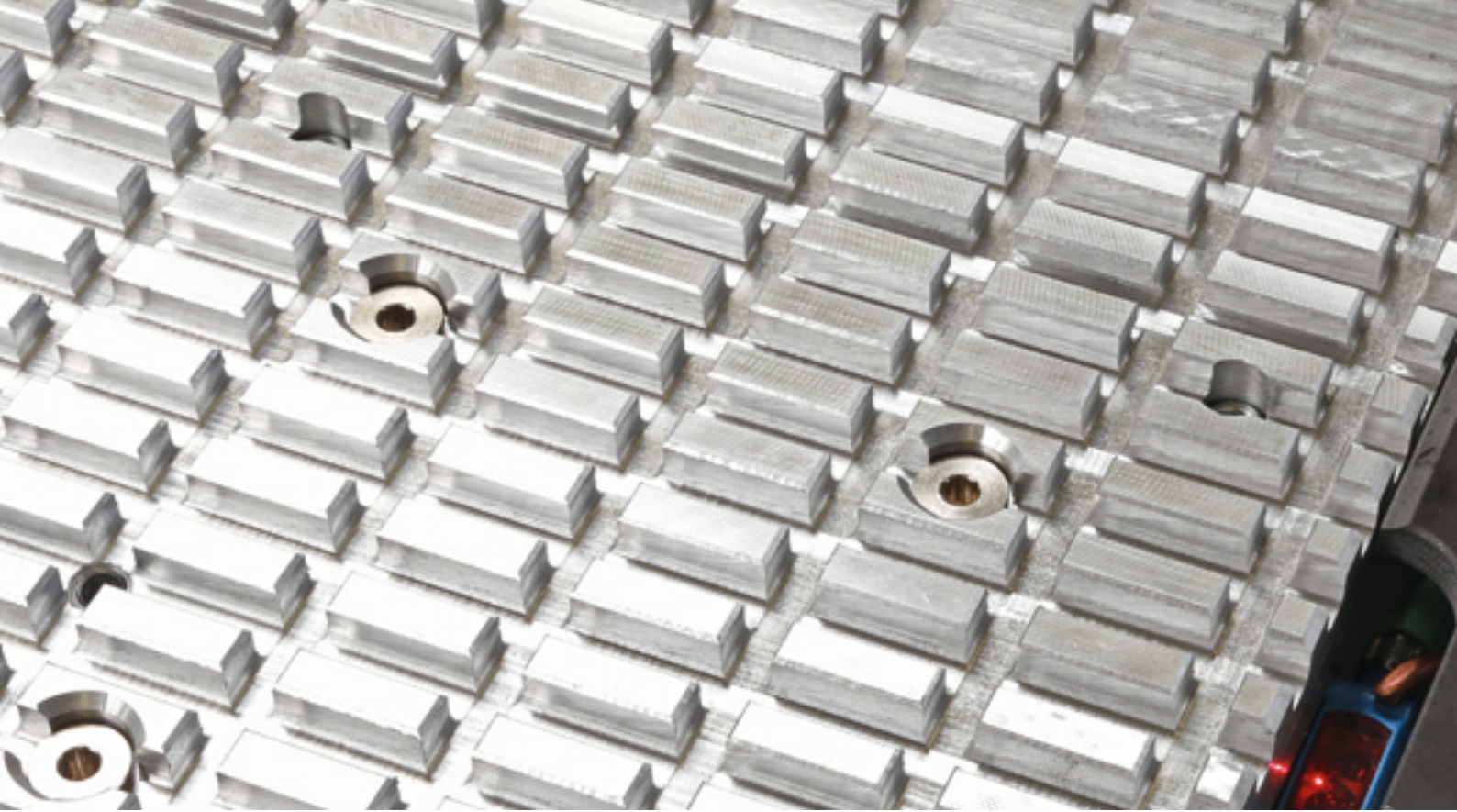
The grid table is also suitable for aggregates due to different clamping elements with variable mounting heights.



Your benefits at a glance:

- Optimizes the distribution of the vacuum by the fine grid of the table
- Free definable vacuum surfaces reduce leaks and transmission losses
- Different clamping elements with variable mounting heights for more flexibility
- Reliable part fixture even under exposure to high hogging forces
- Also suitable for the use of aggregates
- Processing of wood-based composite materials provided, e.g. acryl glass





Processing example

- The possibilities to fix the workpiece on the narrow table grid provide a lot of flexibility for the applications



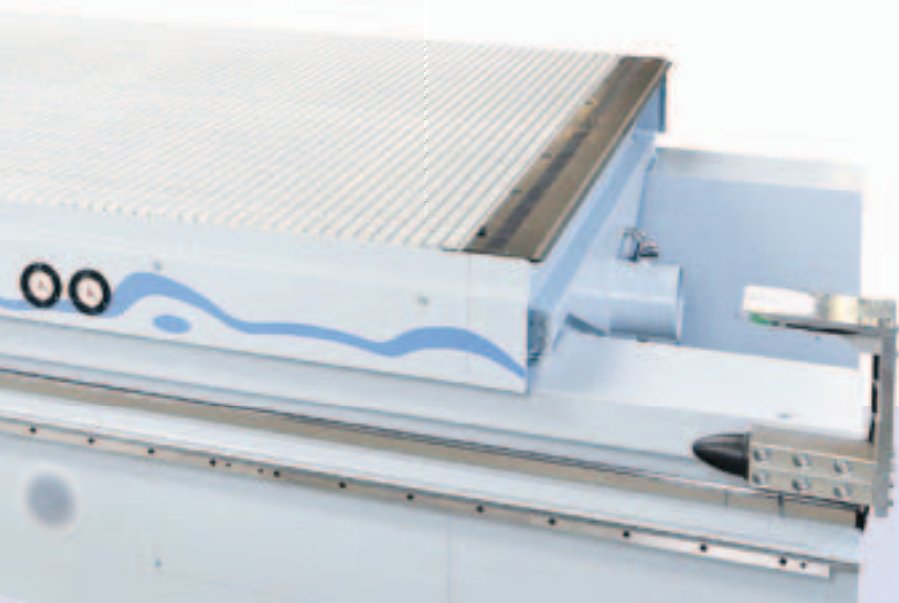
Processing example

- Due to rotatable vacuum cups even special shapes of the workpieces are possible without any problems

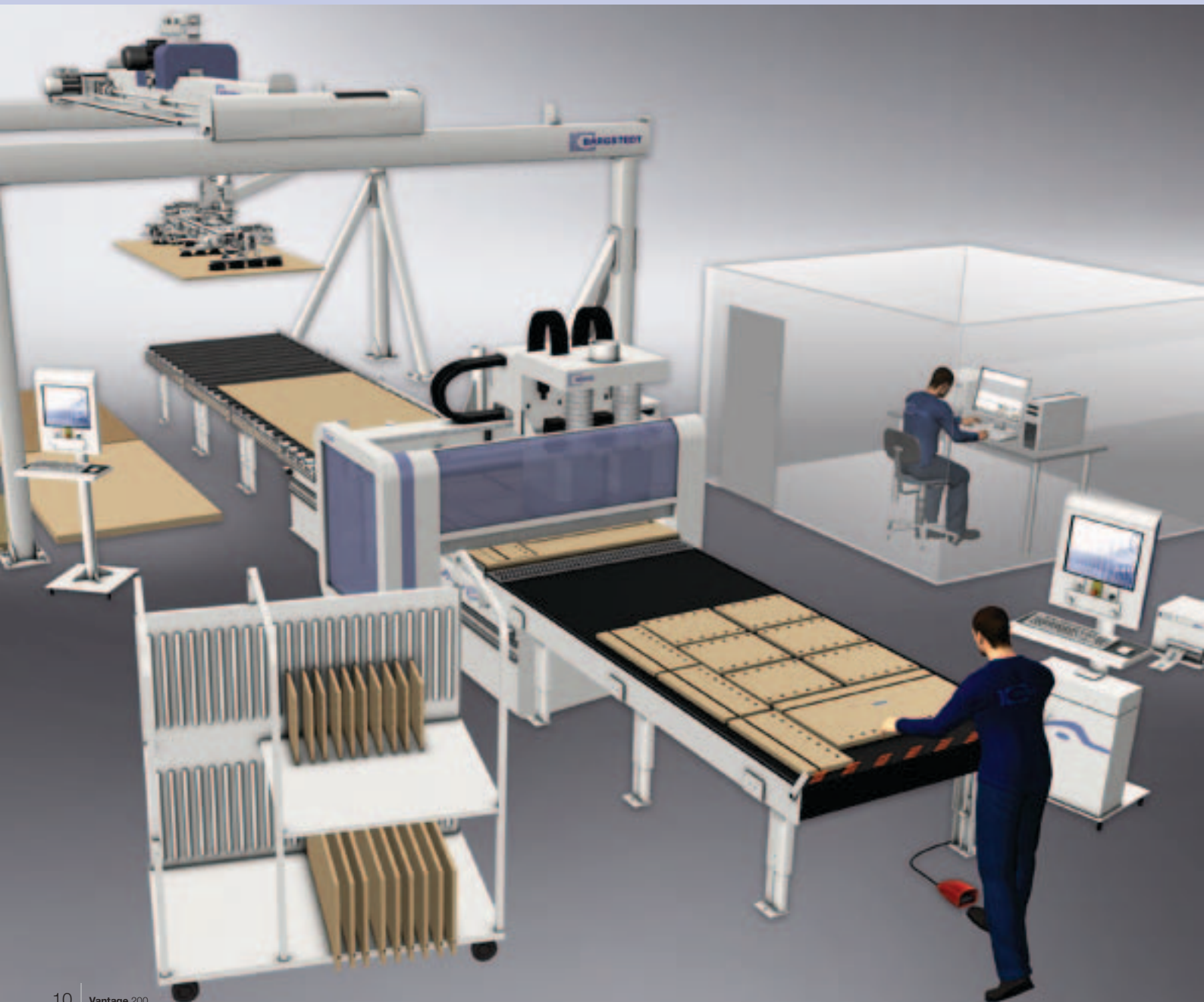


Clamping elements

- With diverse types of vacuum blocks it is also possible to carry out simple and quick horizontal processing on grid tables



Nesting Solutions



Nesting – the method with four-fold “focus”...

We divide the typical nesting areas into four areas. The carcass production, the dividing and refining of furniture fronts, the processing of frame furniture as well as the very interesting possibilities for “advanced materials”, such as processing block elements, plexiglass, aluminium or alucobond.



Carcass furniture

Advantages by nesting:

- Routing of all components required for a carcass
- Drilling, grooving in just one cycle
- Clamping elements also provide horizontal drilling



Processing of furniture fronts

Advantages by nesting:

- Fast dividing and refining of furniture fronts from one workpiece - everything in one cycle!
- The application of aggregates provides high flexibility for the further processing



Frame furniture

Advantages by nesting:

- High degree of utilization due to easy handling of “free” formed parts



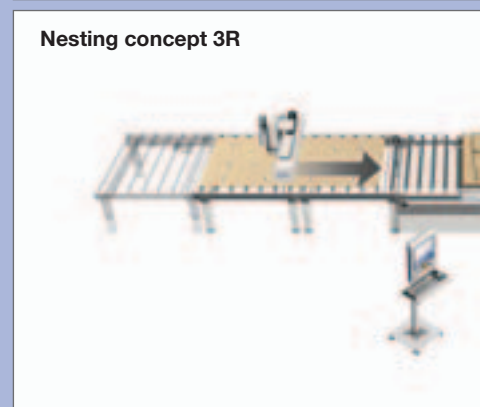
Advanced Materials

- High flexibility of processing possibilities of e.g. block elements, plexiglass or acrylic glass
- Proper cutting of e.g. foam material, carpets or veneer
- High gloss polishing

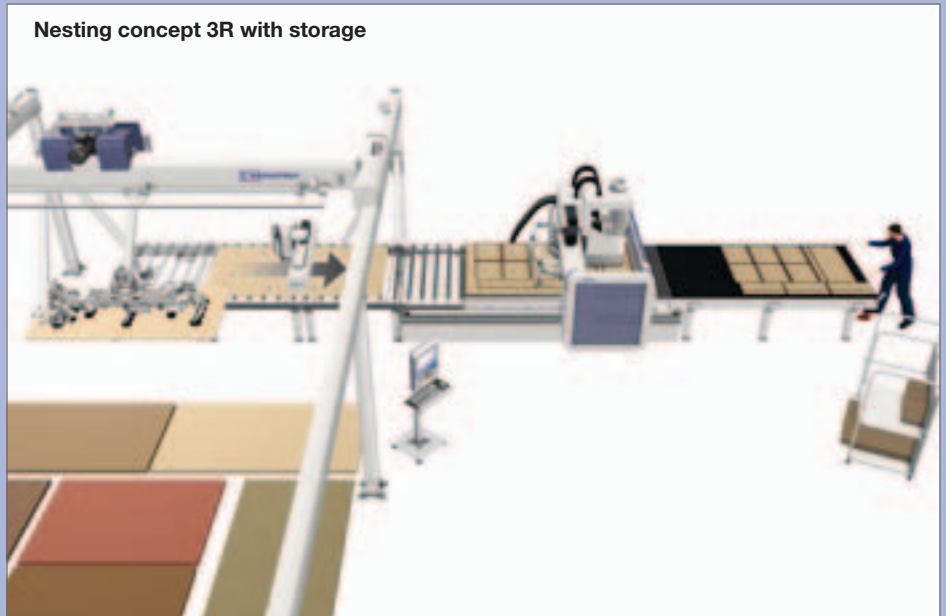
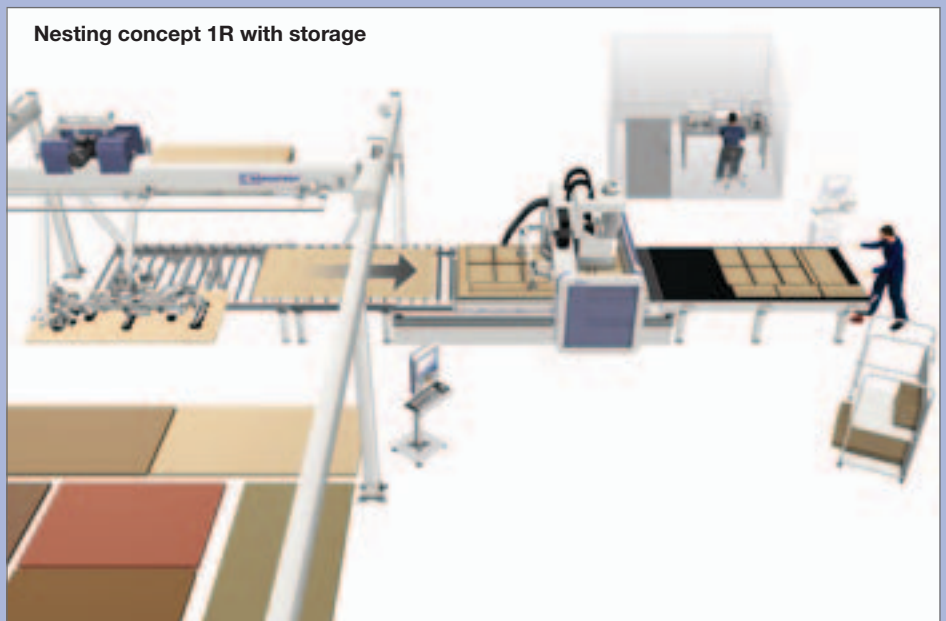


Discover the possibilities...

With the WEEKE nesting solutions you are always well-advised. Whether manual feeding of workpieces, by lifting carriage or by storage - we have always the proper concept for your application. You wish to identify, for example, the workpiece flow exactly by barcode? No problem!



Nesting Solutions



Hardware | Software

With this software package you are »Ready to Race«. You will receive one of the most established CNC-programming systems, the woodWOP software, which has proven itself by more than 30.000 installations worldwide.

Please use our website:

Worldwide largest forum for woodWOP:

www.woodWOP-Forum.de

Free Download of woodWOP-components:

www.weeke.com → Products → Software

Standard | Software Machine

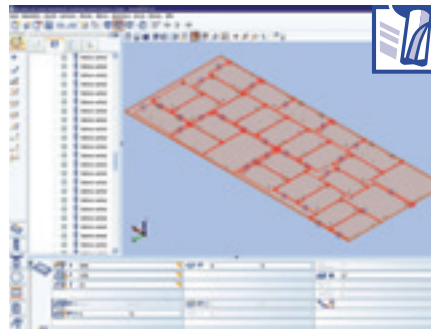
powerControl

- 17" TFT monitor
- Provision of teleservice capability
- USB frontside bus
- Ethernet connection 10/100 Mbit
- Ergonomic hand terminal
- Position of the switch cabinet »freely selectable« (left/right)



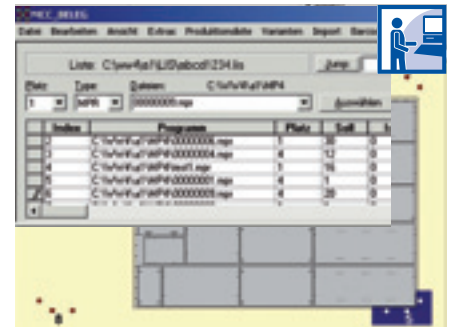
woodWOP

- Modern software based on Windows®
- More than 30,000 installations worldwide



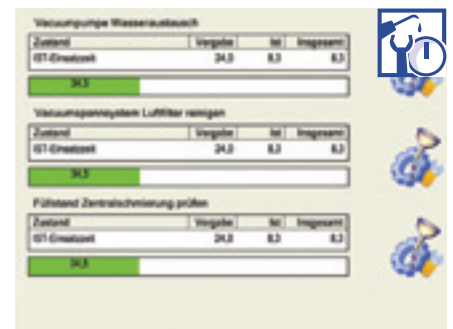
Production list software

- For management and creation of product lists for individual manufacturing.



MCC

- Simple control of main machine functions through soft keys
- Graphical loading



Machine Data Recording Basic

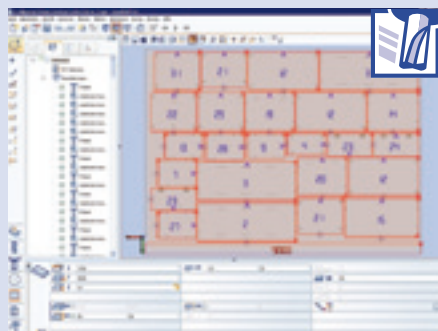
- Machine Data Recording – collecting and evaluating machine states via time meter and event meter



Options | Office Package „Premium“

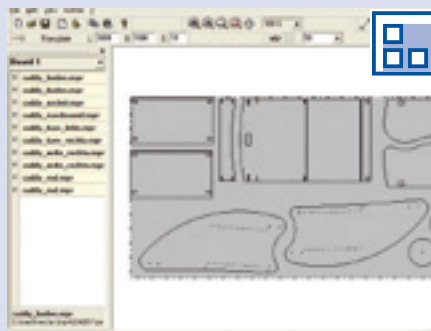
woodWOP

- Modern software based on Windows®
- More than 30,000 installations world-wide



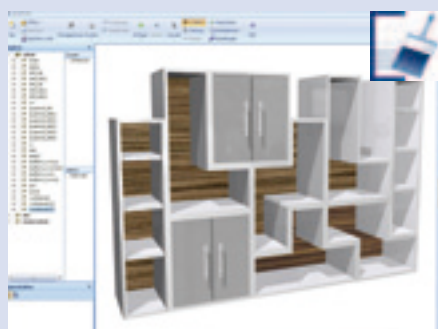
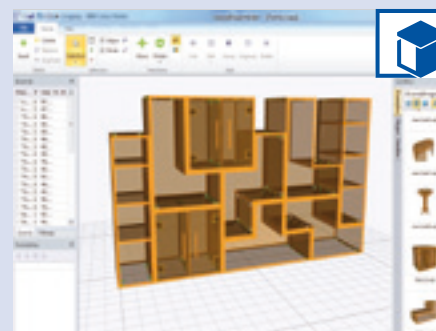
woodNest Basic

- Software for manual Nesting of shaped parts



woodAssembler

- To visualize woodWOP programs (MPR) in 3D
- Enables the construction of individual workpieces to finished objects



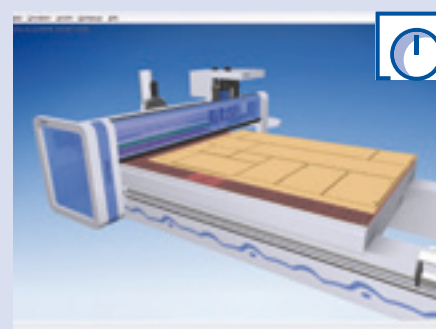
woodVisio

- Objects generated in woodAssembler or Blum Dynalog can be provided with surface materials
- The objects are displayed in a free-standing position



woodWOP DXF Basic

- Interface for CAD-Data Import
- Basis to generate woodWOP programs



3D CNC-Simulator

- Simulates the processing in the order it is stored in the NC-program
- Allows time calculation
- Collision check of the vacuum cups

Aggregates

HIGH PERFORMANCE

FLEX5
.....



High Performance

Sawing,
Ø 220 mm



High Performance

Drilling/Sawing/
Routing,
2 spindles,
Ø 220 mm



High Performance

Cam box router,
2 spindles,
Ø 16/20 mm



High Performance

Drilling/Sawing,
swivelling
(0° - 90°),
Ø 180 mm



High Performance

Planing Aggregate



**Drilling/Sawing/
Routing**



**Drilling/Routing/
Sawing**

2 spindles



Drilling/Routing

4 spindles,
50 mm



Cam box router

2 spindles,
Ø 16/20 mm



**Drilling/Sawing,
swivelling**

(0° - 90°),
Ø 180 mm



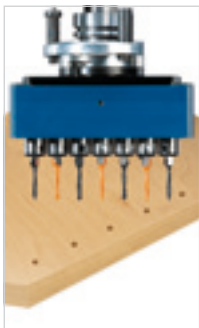
**Drilling/Routing,
swivelling
cranked**

(0° - 90°)



**Tracing routing
aggregate with
tracing ring**

Ø 70 mm |
Ø 130 mm



**Drilling,
7 spindles**

25 mm pitch



**Fitting drilling
head, 3 spindles**



Technical data

Position of the switch cabinet »freely selectable«

	L	B	L1 (with transport belt)	L2 (Concept 3 with lifting table and belt)
Vantage 200/ 510	7080	5070	9400	14300
512	7480	5070	9800	15600
610	7080	5350	9400	14300
612	7480	5350	9800	15600
710	7080	5780	9400	14300
714	8230	5780	11500	17780

Vantage 200 Series – working fields							
	Width (mm)	Length (mm)	Thickness (mm)	Width (ft)	Length (ft)	Thickness (inch)	Vacuum capacity
Vantage 200/ 510	1550	3130	100	5	10	3,94	600/360 m ³ /h 50/60 Hz
512	1550	3700	100	5	12	3,94	600/720 m ³ /h 50/60 Hz
610	1880	3130	100	6	10	3,94	600/720 m ³ /h 50/60 Hz
612	1880	3700	100	6	12	3,94	600/720 m ³ /h 50/60 Hz
710	2250	3130	100	7	10	3,94	900/1080 m ³ /h 50/60 Hz
714	2250	4300	100	7	14	3,94	900/1080 m ³ /h 50/60 Hz

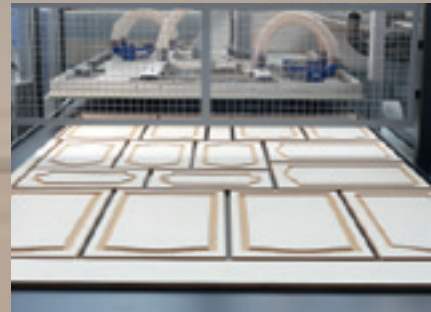
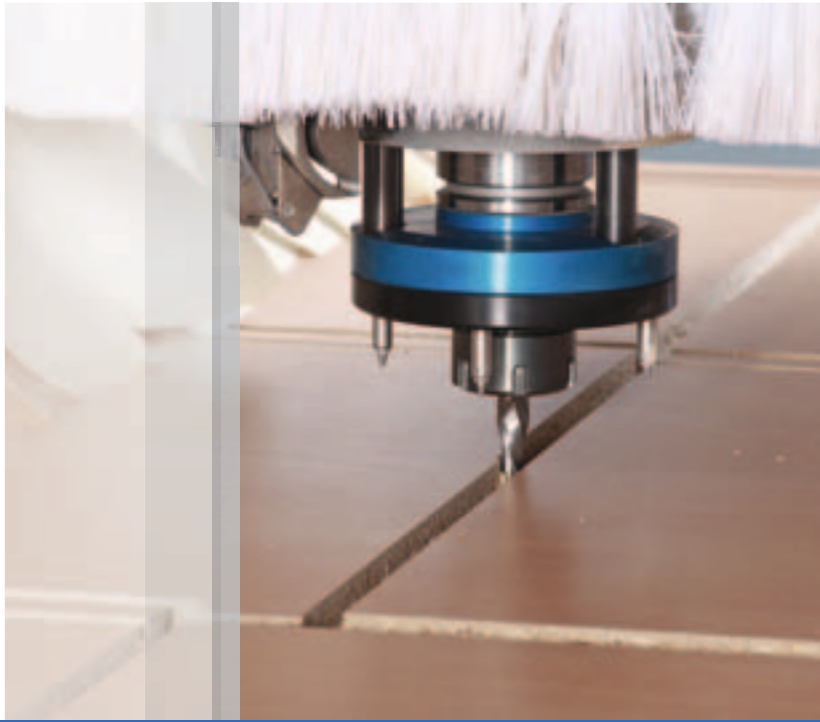
Vector speed	m/min (X - Y) 130 - (Z) 20
Compressed air connection	inch R ½
Compressed air required	bar 7
Dust extraction port	mm Ø 200
Dust extraction volume	m ³ /h min. 3170
Total machine weight 510-714	kg appr. 5100 - 7300
Electrical power – total connection load	kW 26,5 - 38
Switch cabinet	mm 1000/800 x 800 x 1970

Vantage 200 | Nesting

The magic
always lies
in the detail

Theodor Fontane

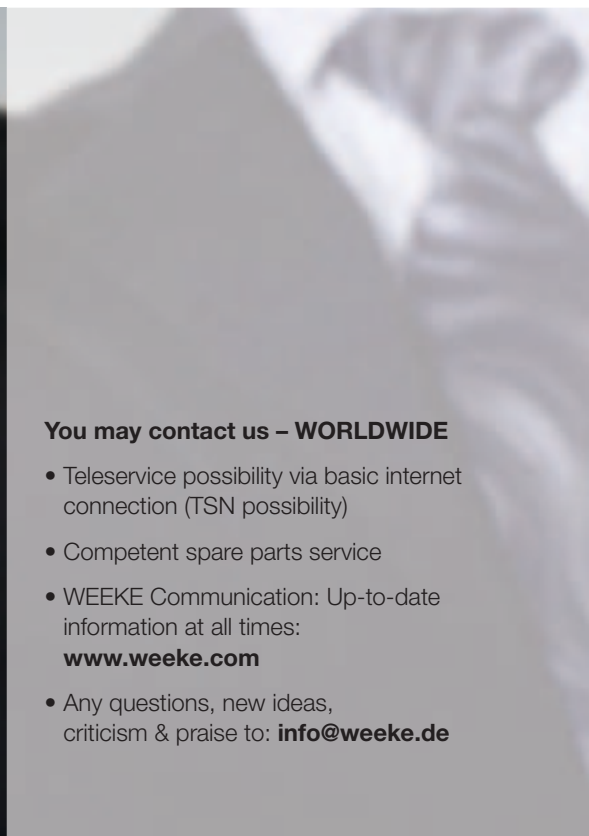






**Choose the Original
Choose Success!**

For the Success of Original Technology
A campaign of the VDMA



You may contact us – WORLDWIDE

- Teleservice possibility via basic internet connection (TSN possibility)
- Competent spare parts service
- WEEKE Communication: Up-to-date information at all times:
www.weeke.com
- Any questions, new ideas, criticism & praise to: **info@weeke.de**

Member of the HOMAG Group



WEEKE Bohrsysteme GmbH

Benzstrasse 10-16
33442 Herzebrock-Clarholz
GERMANY

Tel.: +49 5245 445-0
Fax: +49 5245 445-44 139
info@weeke.de
www.weeke.com