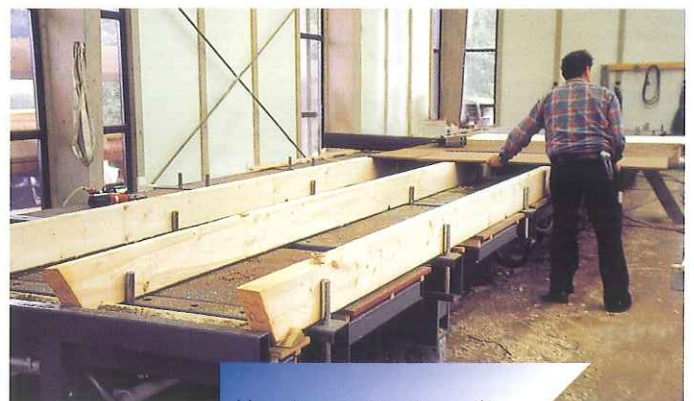




Carpentry table: (expandable to form butterfly turner): exemplary quality combined with versatility and space saving sets new standards.



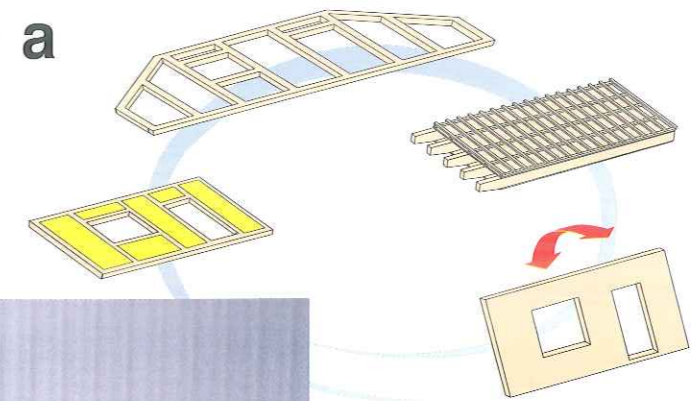
How to construct wooden houses efficiently, economically and in line with real market conditions.

The carpentry table - designed for your success

Optimizing space

The unique flexible shifting concept opens space for optimum material logistics and allows rational production at high efficiency.

Highest flexibility in a minimum of space

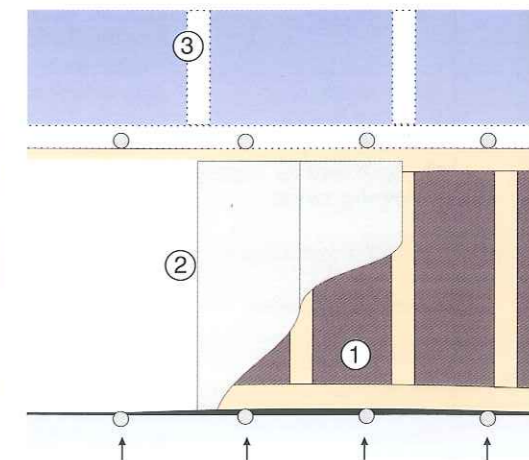


All in one

Positioning table, tilt table, gable bench, roof and ceiling table - universal application without add-on-parts or complex retrofitting thanks to ultra-modern pneumatically controlled clamping devices in combination with plug bolts. The quality of the Weinmann carpentry table guarantees high dimensional and angular accuracy.

Advantages of individual clamping

- Front side machining is possible (nailing, screwing, drilling)
 - No cracking in joint area
- ① Individual clamping ensures that studs abut the bottom plate -
 - ② later settling cracks at the sheathing joint are avoided.
 - ③ Jamb wall element



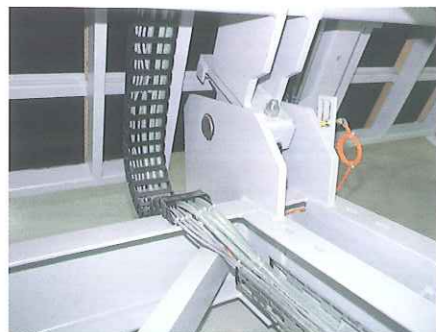
Extendable and future-oriented

The modular construction allows extending and automating our systems thus adapting them to growing capacities.

- ① Extension with tilting function
- ② Extension with a second table (expansion to form butterfly turner)
- ③ Vacuum suction lift for feeding of the sheathing material
- ④ Wall magazine with window assembly and track for plasterwork
- ⑤ Sawing center

All around quality

Reliable robust pivot bearings are only one example for long-life technical solutions down to the detail.



Vacuum lift - a matter of elevation

The user-friendly accessory for easy sheathing and assembling of windows and doors.

NC-positioning table for roof and ceiling elements - the suitable frame for precision work

For program-controlled positioning and clamping of wooden beams and rafters. Data exchange with CAD and PPS-systems.

Quality and economic efficiency

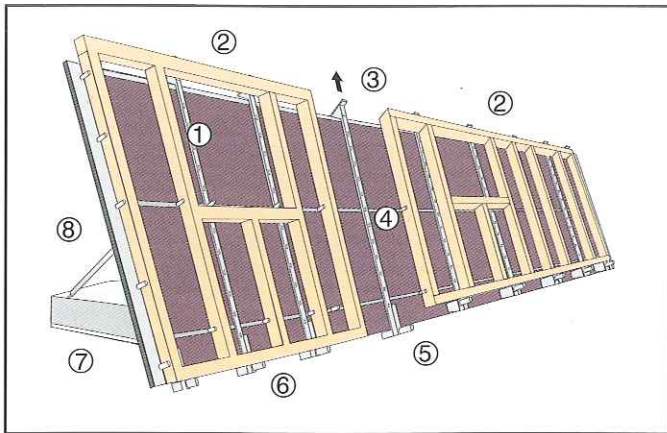
High-performance production and high-quality machining mean that you are in demand as a partner for builders.



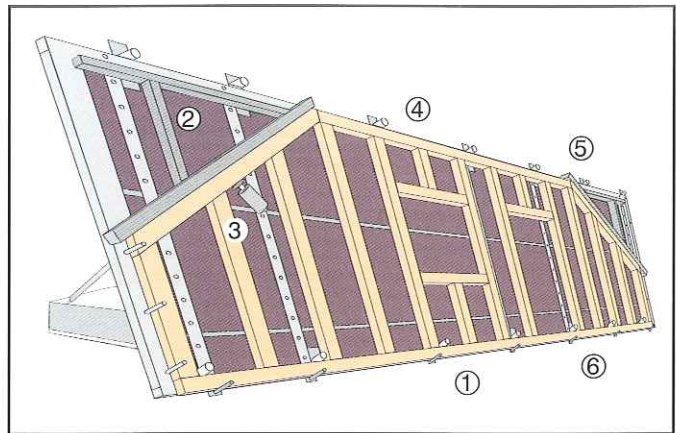
Wall magazine with window assembly - with high capacity

As intermediate or end magazine for wall and gable elements. Also for commissioning, application of plaster and installation of windows and doors or for other working steps.

Efficient working with the Weinmann carpentry table



- ① C-sections for variable clamping of roof and ceiling elements
- ② 2 separate clamping areas for simultaneous working on different elements
- ③ expandable stop for clamping ranges of up to 3.70 m
- ④ Halven rails for positioning of additional cylinders and stops
- ⑤ pneumatic clamping bolts allow front side nailing (alternative: hydraulic clamping)
- ⑥ clamping rollers for easy outfeed of elements
- ⑦ expandable to form butterfly turner
- ⑧ hydraulic tilting up to 92°



- ① Insert bottom plate and clamp towards the outside, thus the beam is aligned perfectly, guaranteeing gable elements with correct angles
- ② insert angle stop on parapet height and set roof slope by means of scale
- ③ universal clamp for clamping of angled plate towards the outside
- ④ roof and ceiling clamp presses the top plate towards the inside (up to 2.50 m height)
- ⑤ insert second angle stop
- ⑥ element is ready for nailing

Technical data

Table length	approx. 12,000 mm, special lengths 8,000 mm, 10,000 mm, 14,000 mm
Table width	approx. 2,750 mm
Working height	approx. 710 mm
Power supply	4 sockets 220 V AC
Compressed air supply	4 intakes with quick couplings
Clamping range	approx. 400 - 2,640 mm without extensions approx. 400 - 3,700 mm with extensions
Clamping cylinder	9 pneumatic or hydraulic cylinders (12 m)
Tape measure	2 in longitudinal direction
Sheathing	anti-slip birchwood sheathing or perforated plates
Weight	approx. 5,500 kg (at 12 m length)

Accessories

- Roof and ceiling clamps
- Angle stops
- Universal clamps
- Vacuum suction lift
- Moving gear
- Tilt function



Weinmann
Holzbausystemtechnik GmbH
 Forchenstraße 50
 D-72813 St. Johann-Lonsingen
 Phone + 49 (0)71 22 / 82 94-0
 Fax + 49 (0)71 22 / 82 94 66
 info@weinmann-partner.de
 http://www.weinmann-partner.de

www.hoechsmann.com