

PTP series

CNC ROUTING TECHNOLOGY

ANDERSSON GRENÅ

PTP series

With over 20 years of experience in machine engineering and production, Anderson has developed into a world leader of CNC processing machinery for heavy duty and high-accuracy applications.

This is the basis for an internationally successful product range, fulfilling the highest demands of today's manufacturing companies, including aerospace industries around the world.

The PTP series is especially designed for furniture manufacturers who require high production in panel processes.

The helical rack & pinion drive allows fast and accurate positioning. Furthermore, this design is possible to extend the table dimensions in X-direction to match the customer's needs.



The machine is equipped with safety requirements for CE regulation.

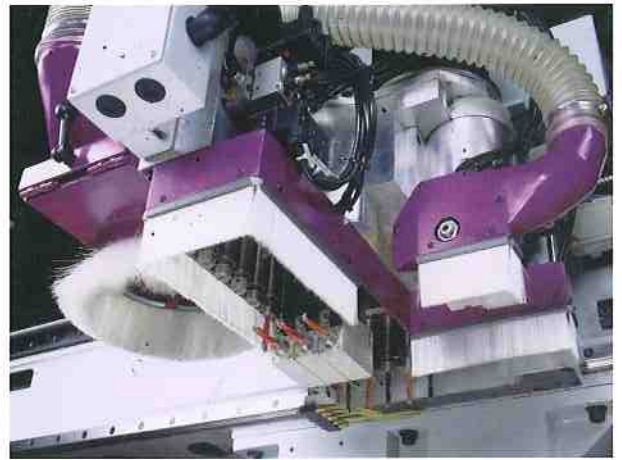
Horizontal Drilling

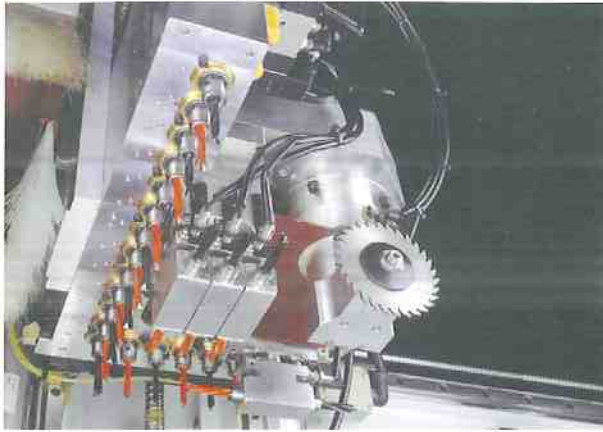


Drilling and Routing



Vertical Drilling





■ The Boring unit is equipped with 19 vertical spindles and 4 horizontal spindles. Additional this unit provides a grooving saw as standard.



■ The automatic tool change system provides a 8 positions magazine

■ **The fastest and most efficient way for positioning beams and cups.**



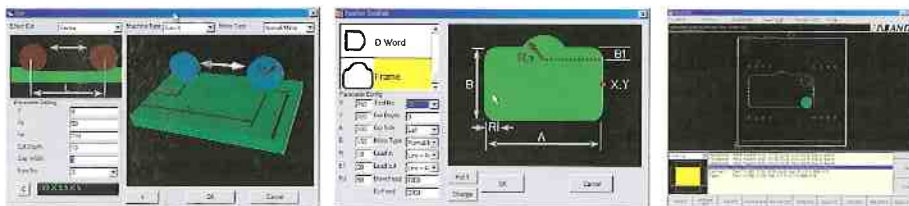
Panel Beam

The movable beams and suction cups allow you to manufacture different kinds of work pieces by utilizing different processing procedure.

A laser-pointer system is applied for positioning panel beams and suction cups automatically.

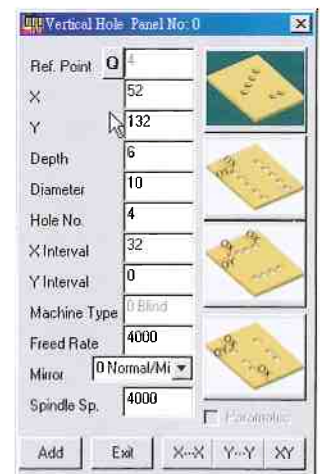
The operator can drag and position the beams and cups on the monitor and generate CNC program automatically. By pressing cycle start, the laser-pointer will move to the specified position for locating the beam and cup.

Programming:



ANDI-FANUC controller with PC front end feature are equipped in this machine.

A conversational programming system, WoodCAM(created by ANDI), is built in the system. The operator can easily arrange production by selecting different applications and entering the variables.



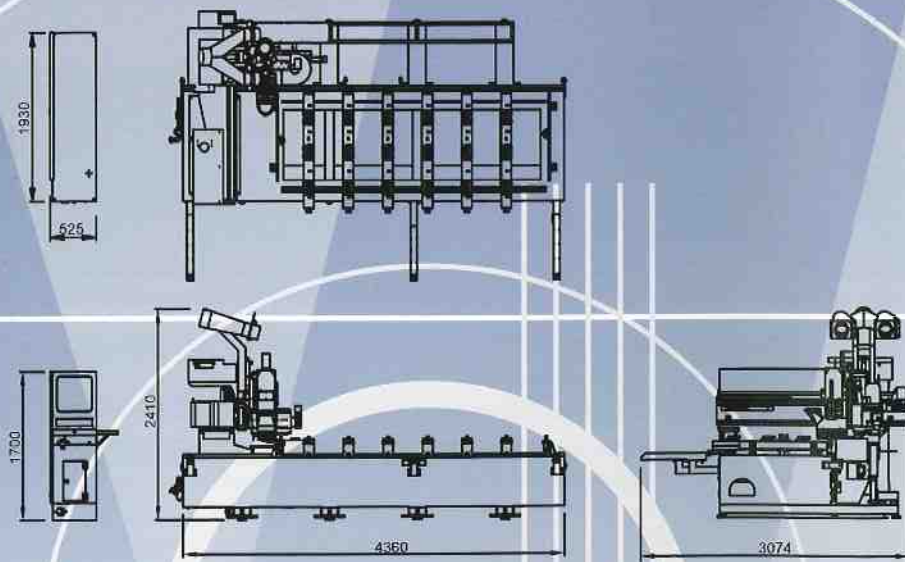
PTP series

Our Global Engineering is your Advantage - ANDERSON GROUP

Technical Specification

Basic configuration:	PTP series
Number of beams	6
No of pads per beam	3
Table size	3,000 x 1,300mm
Stroke of X-axis	3,340mm
Stroke of Y-axis	1,420mm
Stroke of Z-axis	150mm
Rapid travel speed in X	80 M/min
Rapid travel speed in Y	60 M/min
Rapid travel speed in Z	20 M/min
Spindle Data	ANDI HF Spindle
Power	7,5 kW
Speed	1,000~18,000 RPM
Clamping system	SK 30
Tool changer	8 pos.
Boring block	Andi Type (7x13)
Vacuum pump	250 M ³ /HR
Controller	ANDI-FANUC
Dimensions:	
Floor area	4,500 x 3,200 mm
Height	2,500 mm
Weight	3,500 kg

All Anderson's products feature a limited warranty - ask your local Anderson dealer for details. The information provided in this brochure (including illustrations, photos, specifications and text) may be changed due to modification or options. Please refer to your Anderson order confirmation for precise product information.



Product
STRATOS



ANDERSON (Head Office)
7F, No. 72, Sung Chien Rd.
Taipei, Taiwan
Tel: +886 (0)2 2523-7888
Fax: +886 (0)2 2523-6666

ANDERSON (Singapore)
BLK459 PASIR RIS RD.
#10-257(S)510459, Singapore
Tel: +65 5840749
Fax: +65 5814828

