

Klever G FT

Numerical control machining centres with gantry structure



 **BIESSE**

Klever G FT

Functionality and quality at a competitive price

Klever G FT is the Biesse Gantry machining center designed for plastic based and non ferrous materials machining. The technical solutions adopted in the designing process makes Klever G FT the perfect solution for signs, displays, artistic and technological components in general, without compromising the capability to process wood and wood based materials where Biesse has a decennial tradition.



Available versions:
Klever 1224 G FT
Klever 1530 G FT
Klever 1836 G FT
Klever 2236 G FT

Many user friendly applications



Cabinet doors Nesting.



Furniture elements Nesting.

Klever G FT

Flexibility in operation: With Sweeping Arm and Panel Unloading Table (Optional)

Integration of Klever G FT with Unloading System: This solution offers the automation of nesting solution with unloading system, reducing the handling time and increasing the productivity.



Pneumatic Side Stoppers

Available versions:
Klever 1224 G FT
Klever 1530 G FT
Klever 1836 G FT

The unloading belt moves in synchronous to the outfeed speed of the Sweeper Arm. Thus the nested workpieces are moved smoothly on the unloading belt.

Note: Unloading belt integration is available only for Klever G FT version with Aluminium Vacuum Bed and Pneumatic side stops.



Klever G FT

Many user friendly applications



Aluminium processing.

Plastic materials processing



Operating unit configuration



Electrospindles for all applications:
5 kW ERC 32 collet coupling 1.000-24.000 rpm (standard),
12,2 kW ISO30/HSK F63 1.000-24.000 rpm (optional),
6 kW HSK F50 1.000-32.000 rpm (optional).



Tool changer with
7 positions for Klever 1224 G FT,
8 positions for Klever 1530 G FT,
10 positions for Klever 1836 G FT,
10 positions for Klever 2236 G FT.



Tool pre-setter for "Z" offset (optional)



Auto lubrication with pump (optional)

Klever G FT

Versatility and efficiency

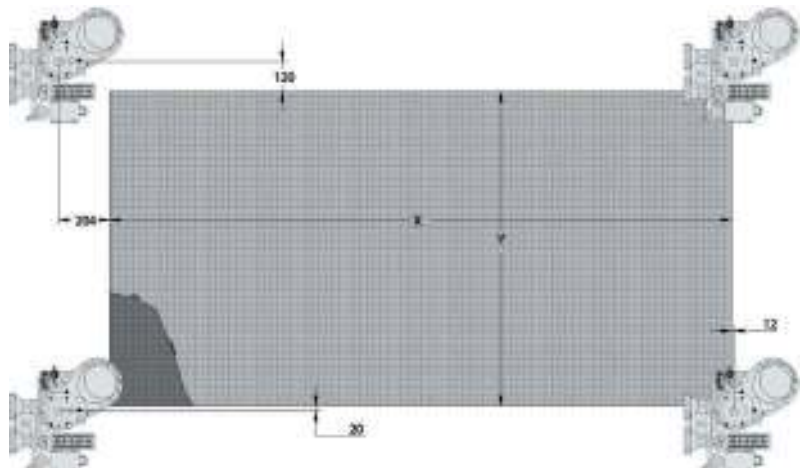


The automatic tool lubrication unit grants an higher finishing quality and a longer lasting tool life. The oil mist is sprayed directly where the tool is routing creating a clean and contiuous lubrication. (optional)



The integrated hold down ring allows the machining of small pieces otherwise impossible to hold with just the vacuum force. (optional)

Working fields



	X	Y	Z
	mm/inch	mm/inch	mm/inch
Klever 1224 G FT (4'x8')	2511/98.8	1250/49.25	150/5.9
Klever 1530 G FT (5'x10')	3126/123	1563/61.5	150/5.9
Klever 1836 G FT (6'x12')	3811/150	1876/73.8	150/5.9
Klever 2236 G FT (7'x12')	3811/150	2189/86.1	150/5.9

Universal work table



Aluminium working table with vacuum system: allows automatic locking using T slots or vacuum locking (optional).

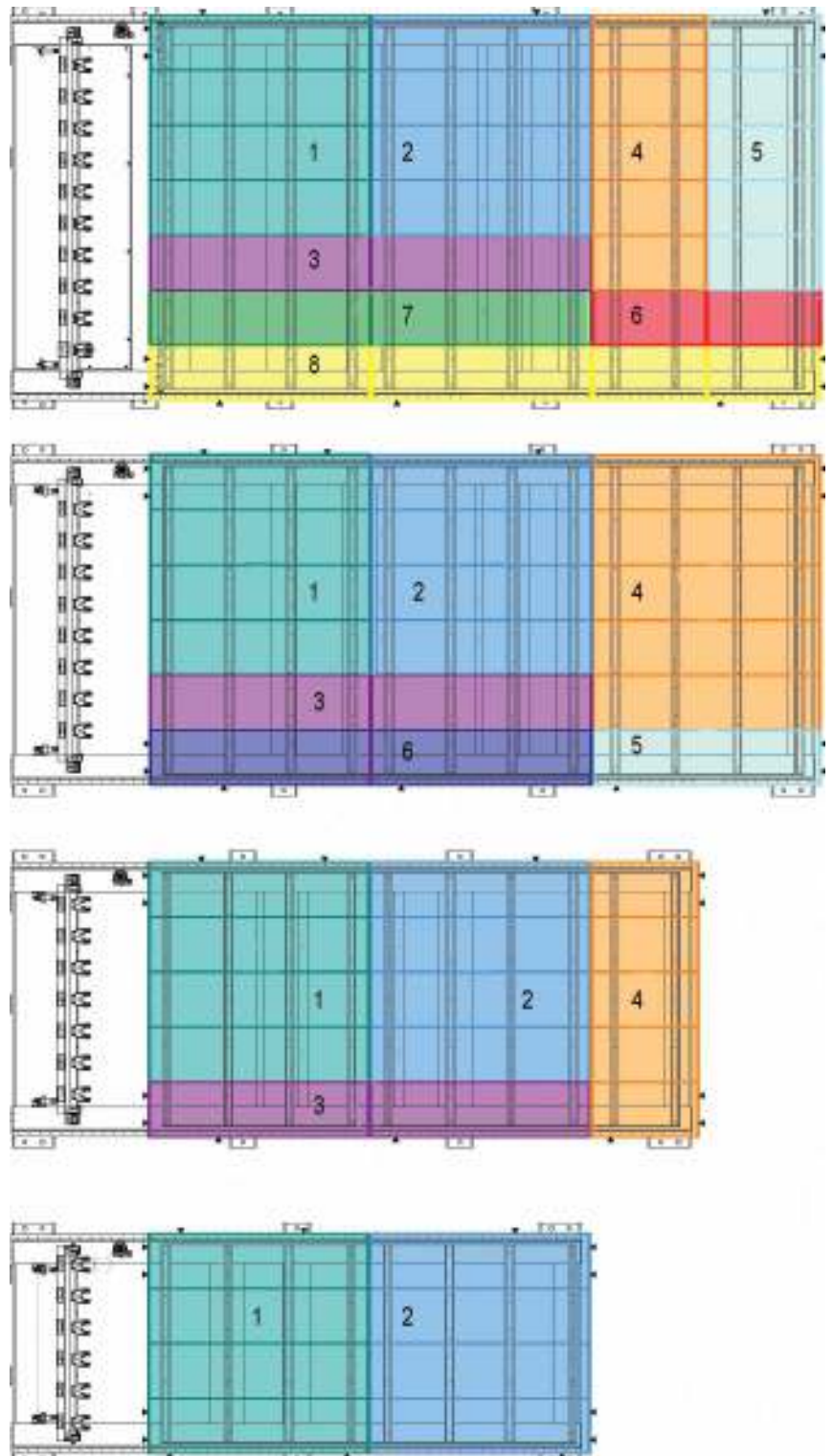


The Stratified phenolic table is designed to fit the regular vacuum modules through an adaptor allowing horizontal and undercut operations.

Klever G FT

Optimal piece locking

Optimization of piece locking during machining thanks to automatic division of vacuum areas.



Simple and functional software

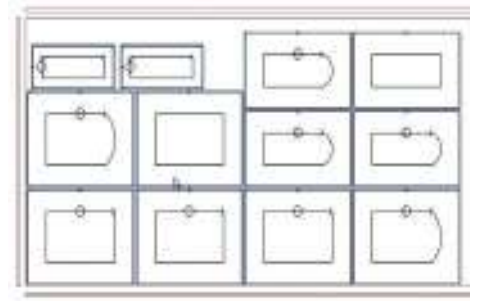
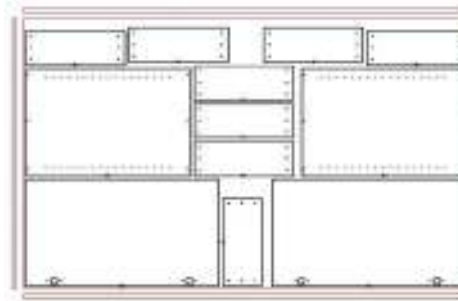
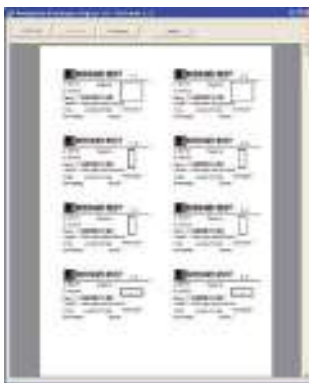


The BiesseWorks graphic interface makes full use of the operating methods typical of the Windows operating system:

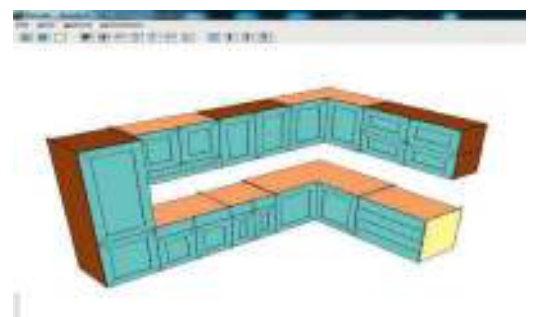
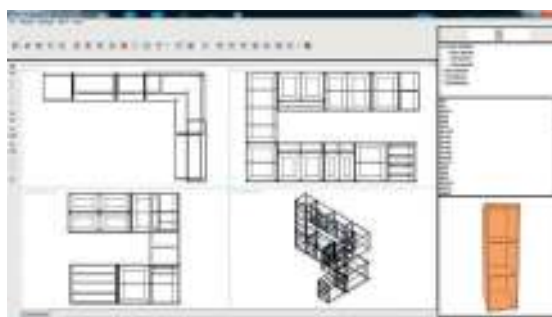
- assisted graphic editor used to program machining operations;
- parametric programming and guided creation of parametric macros;
- import of CAD and other external software files in DXF and CID3 format.



The Biesse entry level software module to prepare and optimize machining diagrams in Nesting mode. Perfectly integrated with BiesseWorks, BiesseNest makes nesting of every kind of shape, while using parametric programs in a simple and effective way.



Biesse CabinetEVO is the software solution for the design of the interior cabinet with several possibilities for the visualization of the project and all the required workings (optional).



Klever G FT

Easy to use, precise, safe and functional



Lowerable stops.



Great visibility with total security.

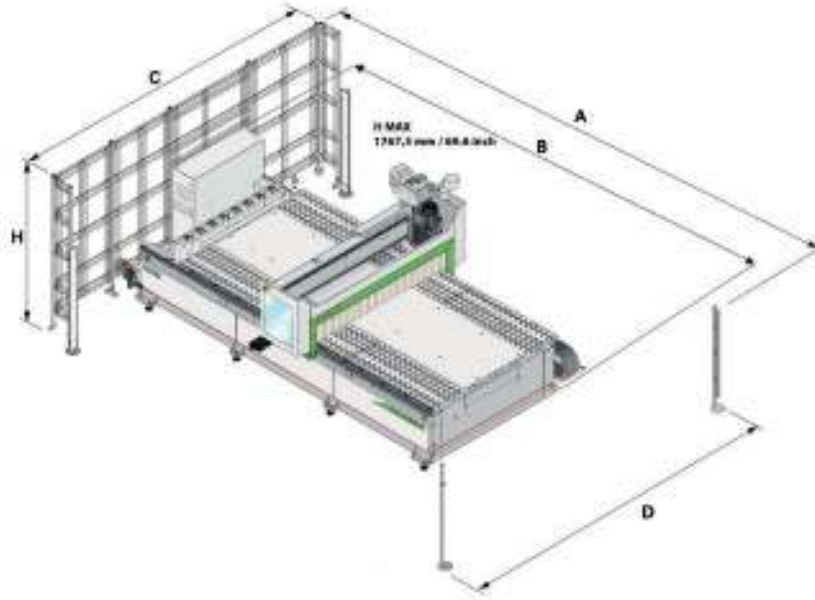


PC-based Numerical Control with BiesseWorks graphic operator interface. Intuitive and with great expandability to SW graphics, CAD-CAM, engraving.



2 Brushless motorizations on X axis for precise machining.

Technical specifications



CE	A	B	C	D	H
	mm/inch	mm/inch	mm/inch	mm/inch	mm/inch
Klever 1224 G FT	4824/189.9	-	3730/146.8	-	2000/78.7
Klever 1530 G FT	5444/214.3	-	4000/157.4	-	2000/78.7
Klever 1836 G FT	6142/241.8	-	4306/169.5	-	2000/78.7
Klever 2236 G FT	6127/241.2	-	4575/180.1	-	2000/78.7
NCE	A	B	C	D	H
	mm/inch	mm/inch	mm/inch	mm/inch	mm/inch
Klever 1224 G FT	-	4454/175.3	-	2761/108.7	2000/78.7
Klever 1530 G FT	-	5084/200.1	-	3214/126.5	2000/78.7
Klever 1836 G FT	-	5778/227.4	-	3556/140	2000/78.7
Klever 2236 G FT	-	5756/226.6	-	3869/152.3	2000/78.7
NCE Express Pack	A	B	C	D	H
	mm/inch	mm/inch	mm/inch	mm/inch	mm/inch
Klever 1224 G FT	4624/182	-	3449/135.7	-	2000/78.7
Klever 1530 G FT	5266/207.3	-	3719/146.4	-	2000/78.7
Klever 1836 G FT	5942/233.9	-	4032/158.7	-	2000/78.7
Klever 2236 G FT	5927/233.3	-	4302/169.3	-	2000/78.7
Loadable piece					mm 150 - inch 5,9
Z axis stroke					mm 260 - inch 10,2
Axes speed X/Y/Z (Standard)					m/min 22,5/22,5/12,5 - foot/min 73.8/73.8/41
Axes speed X/Y/Z (Express Pack)					m/min 60/60/25 - foot/min 196/196/82

Tests were carried out in accordance with Regulations BS EN 848-3:2007, BS EN ISO 3746: 2009 (sound pressure) and BS EN ISO 11202: 2009 (sound pressure in the operator's working position) with run of panels. The noise levels given here are emission levels and do not necessarily represent safe working levels. Although there is a relationship between output levels and exposure levels, the output levels cannot be reliably used to determine whether additional precautions are necessary or not. The factors determining the noise levels to which the operative personnel is exposed, include the length of exposure, the characteristics of the work area, as well as other sources of dust and noise (i.e. the number of machines and processes concurrently operating in the vicinity), etc. In any case, the information supplied will help the user of the machine to better assess the danger and the risks involved.

Surface sound pressure level during machining in A (LpA) on machine with rotary vanes vacuum pump	Lpa=79dB(A) Lwa=96dB(A)
Surface sound pressure level during machining in A (LpA) and sound power level during machining in A (LwA) on machine with rotary claw vacuum pump	Lwa=83dB(A) Lwa=100dB(A)
Measurement uncertainty K	dB(A) 4

Service

Real time solutions



Thanks to a global network and a highly specialized team it offers a full range of after-sales services:

- Spare parts
- Technical support
- Tele-support
- Installation
- Maintenance
- Training
- Repair

Biesse Group's Service promotes, cultivates and develops closer and more constructive relationships with clients to get to know their requirements better, to create more value and to help improve the products and services it provides.



The Biesse Group

The Biesse Group operates in the production of machinery and systems for the wood, glass and stone working industries.

Starting right from its formation in 1969, the Biesse Group has stood out in world markets for its rapid growth and strong will to become a global partner for those companies belonging to its lines of business.

As a multinational company, the Biesse Group distributes its products through a network of 30 directly controlled subsidiaries and no fewer than 300 dealers and agents located in strategic markets enabling Biesse to cover more than 100 countries.

They guarantee specialized after-sales assistance to clients whilst at the same time carrying out market research in order to develop new products.

The constant drive for technological improvement, innovation and research has let Biesse develop modular solutions capable of meeting all the production requirements of its clients: from the design of turnkey plant for large industrials to single automated machines and work centres for small and medium enterprises and even down to the design and sale of single highly technological components.

The Biesse Group has over 2,800 employees and has production facilities in Italy and India with a total surface area of over 115.000 square metres.

The Biesse Group is made up of three divisions, each of which includes a productive unit concentrating on single product lines.

The Wood Division designs and produces woodworking machinery for companies processing furniture, doors and windows, and offers a wide range of solutions for the entire industrial production cycle of wood and its by-products.

The Glass and Stone Division produces machines for companies processing glass, stone and, more generally speaking, for different industries such as interior decoration, building and the automobile industry.

The Mechatronic Division designs and produces highly technological components both for the Group and for the world market.

Le Groupe Biesse est le leader du marché des machines à bois, des machines à travailler le verre, le marbre et la pierre.

Dès sa création, en 1969, le Groupe Biesse s'est caractérisé, sur le marché mondial, par une croissance rapide et par sa volonté de devenir le partenaire global des entreprises.

En tant que multinationale, le Groupe Biesse commercialise ses produits par un réseau formé de 30 filiales et de 300 revendeurs agréés, sur les principaux marchés, couvrant ainsi plus de 100 pays. Biesse assure un SAV spécialisé à ses clients tout en continuant de développer de nouveaux produits.

Sa recherche constante de nouvelles technologies a permis à Biesse de développer des solutions modulaires afin de répondre à toutes les exigences de production allant de la projection d'installations clés en main aux machines

plus simples pour les pme et à la projection et vente de pièces à la pointe de la technologie.

Biesse a 2800 collaborateurs et une surface de production de plus de 115.000 mètres carrés, en Italie et en Inde.

Le Groupe Biesse est divisé en plusieurs unités de production, chacune dédiée à des lignes de produits spécialisées.

La Division Bois développe et produit des machines pour l'industrie du meuble et des menuiseries et propose toute une gamme de solutions pour tout le cycle d'usinage du bois et de ses dérivés.

La Division Verre et Marbre réalise des machines pour travailler le verre, le marbre et les pierres naturelles, pour l'ameublement, la construction et le secteur automobile.

La Division Mécatronique projette et produit des composants technologiques de pointe et de précision, aussi bien pour le groupe que pour le marché externe.

Die Biesse Gruppe ist Hersteller von Maschinen und Anlagen für die Holz-, Glas- und Steinverarbeitende Industrie. Bereits seit ihrer Gründung im Jahre 1969 hat sich die Biesse-Gruppe auf dem Weltmarkt durch ihr starkes Wachstum ausgezeichnet und hat ihren festen Willen bezeugt, zu einem globalen Partner für die Unternehmen ihrer Branche zu werden.

Als Multinationales Unternehmen vertreibt die Biesse-Gruppe ihre Produkte über ein weltweites Netzwerk von 30 direkten Niederlassungen und nicht weniger als 300 Händlern und Vermittlern, die sich in strategisch wichtigen Märkten befinden, somit ist Biesse in mehr als 100 Ländern präsent. Sie garantieren leistungsfähigen Aftersales-Service für Kunden, bei gleichzeitiger Durchführung von Marktforschung, um neue Produkte zu entwickeln.

Die Biesse-Gruppe zählt über 2.800 Mitarbeiter und verfügt über Produktionsanlagen in Italien und Indien mit einer Gesamtfläche von über 115.000 Quadratmeter.

Durch ihr Hauptaugenmerk auf Forschung und Innovation, entwickelt Biesse modulare Produkte und Lösungen, die in der Lage sind, auf eine Vielzahl von Kundenanforderungen zu reagieren.

Die Biesse-Gruppe ist in drei ABTEILUNGEN gegliedert, von denen jede in Produktionswerke unterteilt ist, die den einzelnen Produktlinien gewidmet sind.

Die HOLZ-ABTEILUNG entwickelt und produziert Holzbearbeitungsmaschinen für die Möbelindustrie sowie für Fenster- und Türenhersteller und bietet eine Reihe von Lösungen für den gesamten industriellen Bearbeitungsprozess von Holz und Holzersatzstoffen.

Die GLAS- UND STEINABTEILUNG fertigt Maschinen für Unternehmen, die Glas, Marmor und Naturstein bearbeiten, ganz allgemein gesprochen, für unterschiedlichste Branchen wie Innenausstattung, Bau- und die Automobilindustrie.

Die ABTEILUNG MECHATRONIK plant und produziert technologische Präzisionskomponenten, die sowohl innerhalb der Firmengruppe, als auch auf dem freien Markt Verwendung finden.





Printed on FSC certified paper

www.biessemanufacturing.com

09-2014

5808A0562 Klever G FTE



Biesse in the World

BIESSE BRIANZA
Alzate Brianza (Como), Italy
Tel. +39 031 630773_Fax +39 031 632298
brianza.commerciale@biesse.com - www.biesse.com

BIESSE TRIVENETO
Codogné (Treviso), Italy
Tel. +39 0438 793711_Fax +39 0438 795722
triveneto.commerciale@biesse.com - www.biesse.com

BIESSE DEUTSCHLAND GMBH
Elchingen, Germany
Tel. +49 (0)7308 96060_Fax +49 (0)7308 96066
Loehne, Germany
Tel. +49 (0)5731 744870_Fax +49 (0)5731 744 8711
info@biesse.de - www.biesse.de

BIESSE FRANCE
Brignais, France
Tél. +33 (0)4 78 96 73 29_Fax +33 (0)4 78 96 73 30
commercial@biessefrance.fr - www.biessefrance.fr

BIESSE IBERICA WOODWORKING MACHINERY SL
L'Hospitalet de Llobregat, Barcelona, Spain
Tel. +34 (0)93 2631000_Fax +34 (0)93 2633802
biesse@biesse.es - www.biesse.com

BIESSE GROUP UK LTD.
Daventry, Northants, United Kingdom
Tel. +44 1327 300366_Fax +44 1327 705150
info@biesse.co.uk - www.biesse.co.uk

BIESSE SCANDINAVIA
Representative Office of Biesse S.p.A.
Jönköping, Sweden
Tel. +46 (0)36 150380_Fax +46 (0)36 150380
biesse.scandinavia@telia.com
Spare parts:
Lindås, Sweden
Tel. +46 (0)471 25170_Fax +46 (0)471 25107
spareparts@biesse.se - www.biesse.com

BIESSE AMERICA
Charlotte, North Carolina, USA
Tel. +1 877 8 BIESSE
Fax +1 704 357 3130
sales@biesseamerica.com - www.biesseamerica.com

BIESSE ASIA PTE. LTD.
Singapore
Tel. +65 6368 2632_Fax +65 6368 1969
mail@biesse-asia.com.sg

BIESSE CANADA
Headquarters & Showroom: Mirabel, QC, Canada
Sales Office & Showroom: Toronto, ON, Canada
Showroom: Vancouver, BC, Canada
Tel. +1 800 598 3202
Fax +1 450 437 2859
sales@biessecanada.com - www.biessecanada.com

PT. BIESSE INDONESIA
Tangerang, Indonesia
Tel. +62 21 53150568_Fax +62 21 53150572

BIESSE KOREA LLC
Gyunggido, Korea
Tel. +82 32 3298780_Fax +82 32 3298781

BIESSE MALAYSIA SDN BHD
Selangor Darul Ehsan, Malaysia
Tel. +60 3 61401556_Fax +60 3 61402556
biessekl@tm.net.my

BIESSE TRADING (SHANGHAI) CO. LTD.
Subsidiary Office of Biesse Asia Pte. Ltd.
Shanghai, China
Tel. +86 21 5767 0387_Fax +86 21 5767 0391
mail@biesse-china.com.cn - www.biesse.cn

BIESSE RUSSIA
Representative Office of Biesse S.p.A.
Moscow, Russia
Tel. +7 495 9565661_Fax +7 495 6623662
sales@biesse.ru - www.biesse.ru

BIESSE GROUP AUSTRALIA PTY LTD.
Head Office
Sydney, New South Wales, Australia
Tel. +61 (0)2 9609 5355_Fax +61 (0)2 9609 4291
nsw@biesseaustralia.com.au - www.biesse.com.au
Melbourne, Victoria, Australia
Tel. +61 (0)3 9314 8411_Fax +61 (0)3 9314 8511
vic@biesseaustralia.com.au
Brisbane, Queensland, Australia
Tel. +61 (0)7 3622 4111_Fax +61 (0)7 3622 4112
qld@biesseaustralia.com.au
Adelaide, South Australia, Australia
Tel. +61 (0)8 8297 3622_Fax +61 (0)8 8297 3122
sa@biesseaustralia.com.au
Perth, Western Australia, Australia
Tel. +61 (0)8 9303 4611_Fax +61 (0)8 9303 4622
wa@biesseaustralia.com.au

BIESSE GROUP NEW ZEALAND PTY LTD.
Auckland, New Zealand
Tel. +64 9 278 1870_Fax +64 9 278 1885
sales@biessenewzealand.co.nz

BIESSE SCHWEIZ GMBH
Kriens, Swiss
Tel. +41 (0)41 3990909_Fax +41 (0)41 399 09 18
info@biesse.ch - www.biesse.ch

BIESSE MIDDLE EAST
Jebel Ali Free Zone, Dubai, UAE
Tel. +971 48878533_Fax +971 48878534
biessemiddleeast@biesse.com - www.biesse.com

BIESSE PORTUGAL WMP
Sintra, Portugal
Tel. +351 255094027_Fax +351 219758231
biesse@biesse.pt - www.biesse.com

BIESSE MANUFACTURING COMPANY PVT LTD.
Head office
Bangalore, India
Tel. +91 80 49489801/2/3_Fax +91 80 49489810
sales@biessemnfg.com - www.biessemanufacturing.com
Mumbai, India
Tel. +91 22 28702622_Fax +91 22 28701417
Noida, Uttar Pradesh, India
Tel. +91 120 428 0661/2_Fax +91 120 428 0663
Hyderabad, India
Tel. +91 9030026228
Chennai, India
Tel. +91 9840954375
Cochin, India
Tel. +91 9809114595

The proposed images and technical data are only indicative. The illustrated machines may be equipped with optional devices. Biesse Spa reserves the right to carry out modifications to its products and documentation without prior notice.

Biesse S.p.A.
Via della Meccanica, 16 61122 Pesaro - Italy
Tel. +39.0721.439100_Fax +39.0721.439150
biesse.sales@biesse.com

