

woodWOP DXF interface for CAD data import

- Import of workpiece geometries from CAD systems
- Transfer of defined processing operations from CAD systems
- Facility for free configuration of import rules
- woodType: Engraving inscriptions and word marks

The use of CAD systems is becoming ever more widespread. Freely configured and complex workpiece geometries frequently have to be reconciled with dwindling batch sizes and minimal delivery periods.

It makes perfect sense to utilize the design capability of CAD systems, and

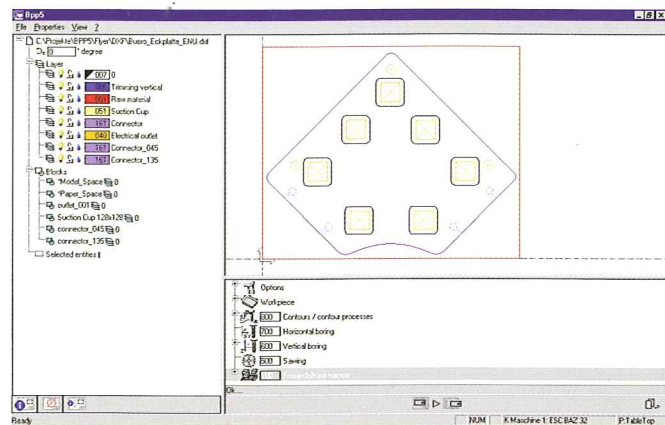
by so doing choose the shortest possible route from design to production directly on a router or processing centre.

The widely used system-neutral DXF format designed to permit the exchange of CAD drawings provides a basis for the generation of woodWOP programs.

woodWOP DXF interface: Fast track to the finished workpiece

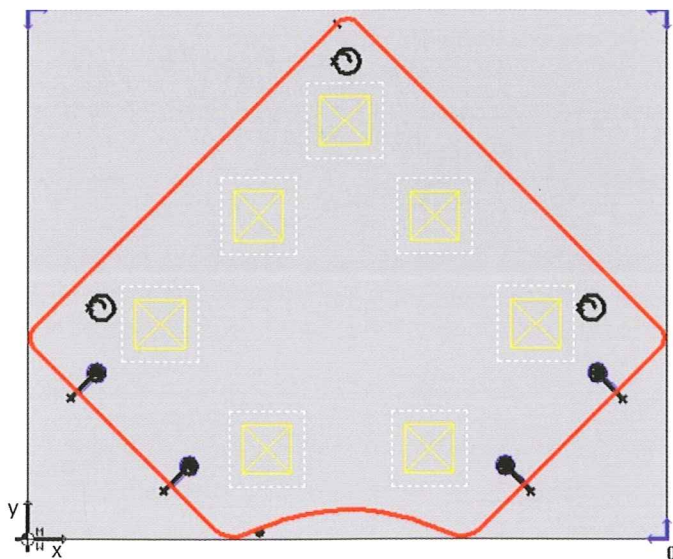
Geometry import

Alongside the typical CNC-oriented geometry types such as arcs and straight lines, splines and ellipsoid shapes can also be imported, and information from blocks and various other CAD elements evaluated. This information permits definition of elements such as pockets, drillholes and suction cup positions right from the CAD drawing stage.



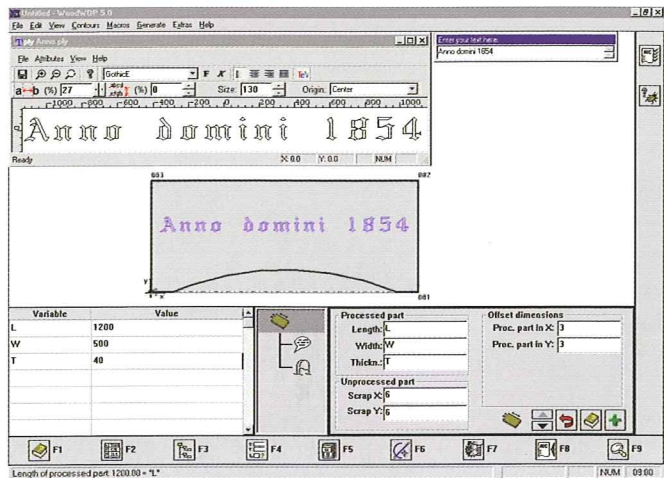
Generation of processing operations

With the aid of a pre-set controller, standard information for woodworking operations can be derived from DXF files. The individual layers of the drawings can be assigned to different processing operations such as drilling holes. On transfer of the data, the processing operations are then automatically generated.



Freely configurable

For special operations, the controller can be upgraded by the programmer (option) after conversion of the DXF files. For each type of processing operation, the conversion rule can be freely and flexibly upgraded, allowing almost the whole scope of woodWOP possibilities to be covered. The non-recurring adjustment of the rules to individual requirements eliminates the need to adjust the CAD drawings to the import rules again every time.



Engraving inscriptions with WoodType

woodType is an easy-to-operate text editor for use with woodWOP. It can be used to generate text and inscriptions in the available Windows True-Type fonts and then engrave them in the workpiece. The available editing functions include:

- Font type
- Character size
- Text orientation
- Text scaling
- Bold and italic type

System requirements

- PC with Windows 98, ME, NT4, 2000 or XP
- At least 128 MB RAM
- 50 MB free hard disk space
- Screen resolution at least 800 x 600



Weeke Bohrsysteme GmbH

Benzstr. 10 - 16
33442 HERZEBROCK-CLARHOLZ
GERMANY
Phone +49 5245 445-0
Fax +49 5245 445-139
E-Mail info@weeke.de
Internet www.weeke.com