

Efficiency Through Planning



V9

Software: Cut Rite Version 9



Intelligent communication: Cut Rite

Cut Rite is a comprehensive optimisation program that significantly improves efficiency in cut-to-size operations. Cut Rite is compatible with ERP/PPC systems and so provides a seamless flow of information from quotation through to delivery. Cut Rite allows you to speed up your internal processes, to be in full control of all your data at all times and to cut your material and production costs. Put your trust in our expertise built on over 30 years of developing our own software.



Contents

- 04 Customers' comments and new features
- 06 Which Cut Rite edition is right for you?
- 08 Success needs a sound footing – the basic features
- 10 Part library and label printing in the office
- 11 Order processing and variable parts lists
- 12 CNC programming and linking
- 13 Edging and laminating
- 14 Board stock control
- 15 Destacking

Customers' comments and new features



"As our old optimisation program had reached its limits, we were looking for a software that would optimise according to both time and waste criteria and at the same time also manage offcuts. We found what we were looking for at HOLZMA: their Cut Rite optimisation software met all our requirements. Despite many years of experience, we realised that we really had no idea of what was actually possible in this field. Our new optimisation software not only communicates with the storage system and saw, but also with our self-programmed production data acquisition system. In addition, it takes care of labelling, thus enabling correct processing of the parts after they leave the saw – for example for in edging, in CNC processing or in packaging."

Oliver Hunger
Hunger Möbelproduktions GmbH



"We wanted to optimise our internal processes and increase our independence. To achieve this, we opted for two new HOLZMA saws equipped with Power Concept and for Cut Rite. A decision that has paid off: these two saws, coupled with the new optimisation software, have made us far more flexible and effective in terms of panel cutting. Quality has improved, and we are now able to process standard parts in small batches while being much less reliant on our suppliers."

Dirk Nolf
Steelcase Werndl AG, Technical Manager
at the Durlangen plant



"We have been using Cut Rite for a long time. Relatively recently we decided to add the 'just-in-time optimisation' option. This option is integrated in the CADmatic machine control system and allows us to modify our order-based production runs, optimised with Cut Rite, directly at the saw if required. That is, we manually intervene in optimised runs in order to combine different orders on a material basis. One of the many advantages of 'just-in-time optimisation' is that it allows us to integrate offcuts."

Wilhelm Hoetzel
Hoetzel Objekteinrichtungen GmbH



"A smooth workflow before and after the saw is just as important to us as in the cutting operation itself. This is where we count on Cut Rite. The optimisation software effectively supports our machine operators, ensures minimum wastage and optimises cutting processes in terms of time."

Roland Waidele
Waidele GmbH & Co. KG



Version 9 – new features

Instant overview of key results in graphs and charts

Users can configure up to three charts to be assigned to each summary. The most important results are displayed in a dashboard. All in all, information can now be understood far more quickly and easily. The new navigation toolbar enables direct access to all major functions from any part of the program – eliminating the need to return to the main menu.

Data evaluation: new editing and filter options

You can now edit your project data directly from the review runs screen. This allows you to make changes fast, without changing screen, and they will be reflected immediately in all dependent data. On top of this, improved filter and group items enable you to sort runs according to name, order number, week and many other criteria.

Multi-core processor capability: up to eight times faster

Besides faster computing times, Cut Rite now provides a progress bar and an option to “keep the last result”. This allows you to cancel the computing process at any time and to retrieve easily the last result obtained.

Easier and safer: user profiles

Each user can now create his own profile – with password, paths and much more. This makes it much easier to organise different users and to assign specific options to them.

Managing areas and volumes

Ideal for customers with horizontal storage systems: the board library has been extended to work with 50-character codes, instead of the 25 characters previously possible, and includes a new field for “material density” which allows the weight of boards, parts, offcuts and waste to be calculated. This makes it easier to calculate, for example, how many trucks will be needed for a shipment.

Calculated values in the summaries

Cut Rite now also offers you spreadsheet functions. You can, for example, easily determine the number of rip and cross cuts in a cutting pattern, copy data and mathematical formulae as you like and have the results displayed automatically. XLS/XLSX format spreadsheets can be imported directly.

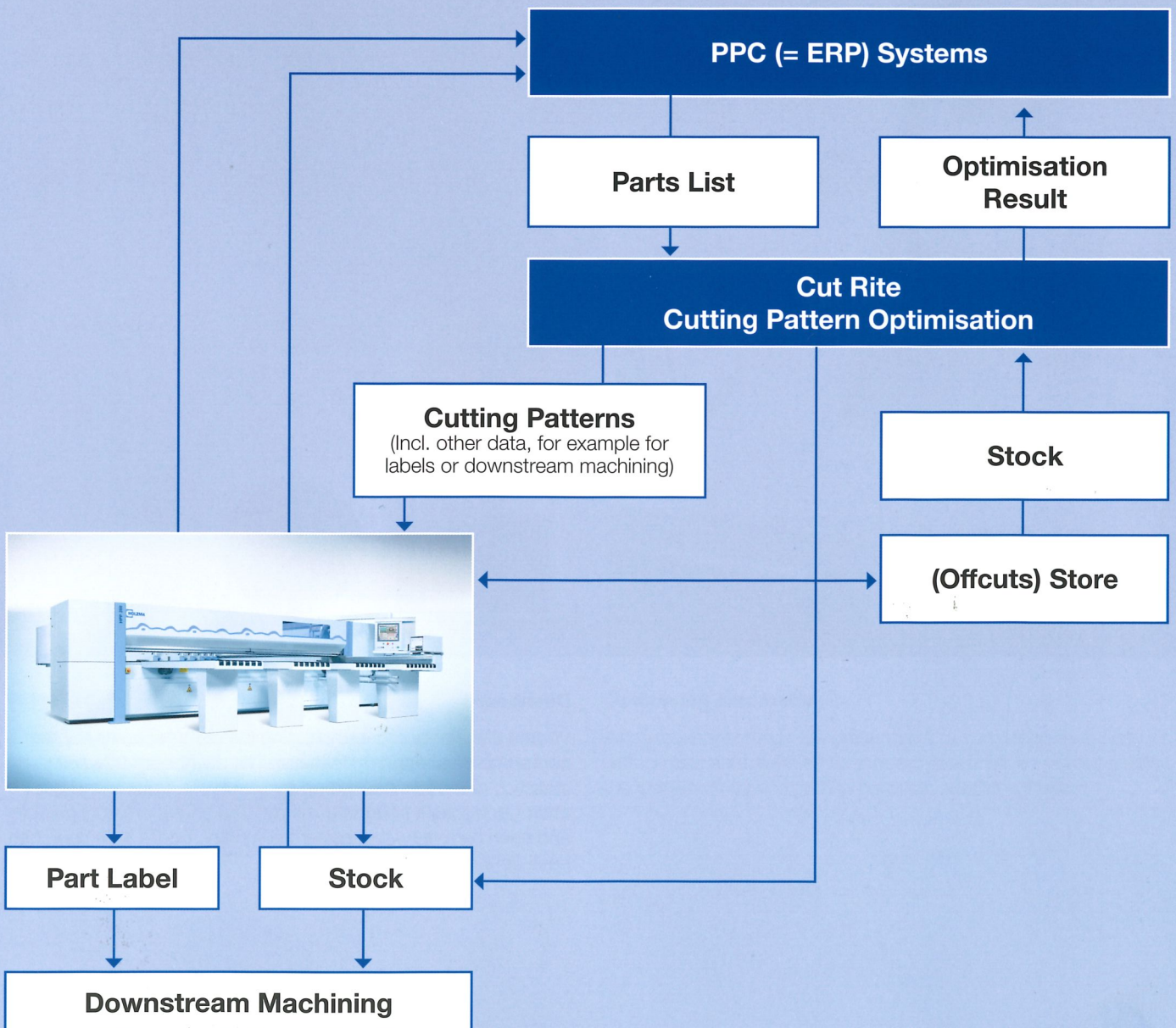
Greater clarity due to vivid design

The new true-colour toolbars and buttons make optimising fun. You can store images in the parts or products libraries and then integrate them, for instance, in quotations.

Which Cut Rite edition is right for you?

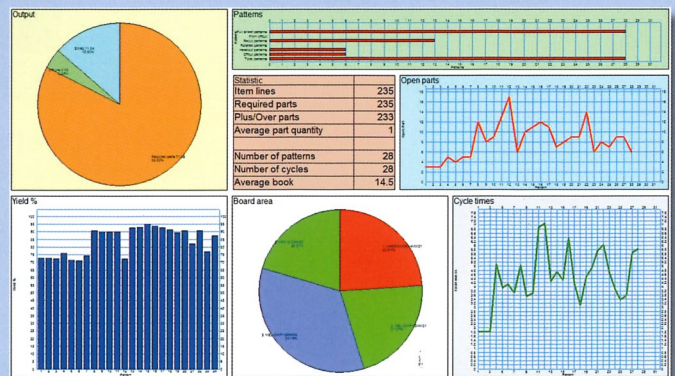
Whichever edition you choose, whether LITE, PRACTICE or PROFESSIONAL, you can be sure that in Cut Rite HOLZMA is providing you with an optimisation software that matches your business needs. The basic software can be enhanced with up to six freely selectable add-on modules.

	Cut Rite LITE	Cut Rite PRACTICE	Cut Rite PROFESSIONAL	
Software available at saw	✓	✓	✓	Interface criteria
Software available in office/job planning dept.	✓	✓	✓	
Connection to single saws	✓	✓	✓	
Connection to angular systems	✗	✗	✓	
Import of parts lists	✓	✓	✓	
Export of results	✓	✓	✓	
Waste optimisation	✓	✓	✓	
Calculation of cutting time	✗	✓	✓	Project features
Cost optimisation	✗	✗	✓	
Optimisation of small batches	✓	✓	✓	
Optimisation of large series	✗	✗	✓	
Optimisation of up to ... parts	10000	10000	10000 x 99999	
Text fields for identification / labelling	✗	99	99	Product options
Tracking of produced / pending parts	✗	✗	✗	
Floating licences (network version) available	✓	✓	✓	
Part library module	✓	✓	✓	
Stock control module	✓	✓	✓	
Order processing and variable parts lists module	✓	✓	✓	
CNC connection module	✓	✓	✓	
Edging and laminating module	✓	✓	✓	
Destacking module	✗	✗	✓	



Success needs a sound footing – the basic features

Easy handling through clear structures is Cut Rite's formula for success. The modular design of the software lets you choose exactly the functions you require. Furthermore, the software provides a high level of flexibility and configurability. Nearly all the modules can be combined with each of the editions – and can also be added on later if desired. This requires a strong base, linking all the editions. Cut Rite Version 9 has powerful basic features, making it the ideal choice for automated processes from data capture through optimisation to data output.



Dashboard

V9 offers a dashboard and charting feature to accompany the comprehensive reporting features. The dashboard offers key statistics of the job, backed up by pie charts, graphs and bar charts to highlight important results. The charts are configurable and each summary, e.g. pattern summary, board summary, can have up to three charts attached.

Integrated board library

Fast, easy access to all of your board materials at your fingertips. Enter, change and delete information on the fly. The integrated board library can also be used for:

- synchronisation with storage systems
- stock control of edges and laminates
- stock control of standard parts

Material	Description	Thickness	Defaultcut	Book	Material parameters	Picture	Type	Checky
BULK-LAM-1MM	Bulk Laminate 1mm	1.0	Y	10			Laminate	0.001
OPREGLAM-10MM	Optigrid Core 10mm	10.0	Y	2			Laminate	0.001
EDGY-LAM-1MM	Edgy Laminate 1mm	1.0	Y	10			Laminate	0.001
SPREGLAM-1MM	Spinn Laminate 1mm	1.0	Y	10			Laminate	0.001
MPC0-0-1MM	Prepreg 0mm	0.0	Y	0	MPC0		Laminate	0.001
MED-DEN-FBRE-10MM	Medium Density Fibreboard 10mm	10.0	N	0			MGP	0.001
MED-DEN-FBRE-25MM	Medium Density Fibreboard 25mm	25.0	N	0			MGP	0.001
MEL-CHP-10MM	Prepregmat White 10mm	10.0	N	0				0.001
MPC1-0-10MM	Prepregmat White 10mm	10.0	N	0				0.001
MPC1-0-20MM	Prepregmat Black 10mm	10.0	N	0			MPC	0.001
MPC1-0-30MM	Prepregmat Black 10mm	10.0	N	0			MPC	0.001
MPC1-0-40MM	Prepregmat Ebony 10mm	10.0	N	0			MPC	0.001
MPC1-0-50MM	Prepregmat Oak 10mm	10.0	N	0			MPC	0.001
MPC1-0-60MM	Prepregmat Red 10mm	10.0	N	0			MPC	0.001
MPC1-10-10MM	Prepregmat Teak 10mm	10.0	N	0			MPC	0.001
MPC1-15-10MM	Prepregmat Teak 10mm	15.0	N	0			Timber	0.001
MPC1-20-10MM	Prepregmat Teak 10mm	20.0	N	0			Timber	0.001
MPC1-25-10MM	Prepregmat Teak 10mm	25.0	N	0			Timber	0.001
MPC1-30-10MM	Prepregmat Teak 10mm	30.0	N	0			Timber	0.001
MPC1-35-10MM	Prepregmat Teak 10mm	35.0	N	0			Timber	0.001
MPC1-40-10MM	Prepregmat Teak 10mm	40.0	N	0			Timber	0.001
MPC1-45-10MM	Prepregmat Teak 10mm	45.0	N	0			Timber	0.001
MPC1-50-10MM	Prepregmat Teak 10mm	50.0	N	0			Timber	0.001
MPC1-55-10MM	Prepregmat Teak 10mm	55.0	N	0			Timber	0.001
MPC1-60-10MM	Prepregmat Teak 10mm	60.0	N	0			Timber	0.001

Title	Example of spots	Opt	DEFAULT	QTY	UNIT	Material	Length	Width	Quantity	Order	Unit	Order	Unit	Order	Unit	Order	Unit
1	BASE-BACK	HARDBOARD-10MM	976.0	736.0	2	0	0	0	0	0	0	0	0	0	0	0	0
2	BASE-BACK	HARDBOARD-10MM	476.0	736.0	2	0	0	0	0	0	0	0	0	0	0	0	0
3	BASE-BOTTOM	MED-DEN-FBRE-10MM	464.0	562.0	7	0	0	0	0	0	0	0	0	0	0	0	0
4	BASE-DOOR	MPC18-0AK	500.0	354.0	7	0	0	0	0	0	0	0	0	0	0	0	0
5	BASE-DRAWER	MPC18-0AK	500.0	186.3	7	0	0	0	0	0	0	0	0	0	0	0	0
6	BASE-END-LEFT	MED-DEN-FBRE-10MM	582.0	876.0	2	0	0	0	0	0	0	0	0	0	0	0	0
7	BASE-END-LEFT	MED-DEN-FBRE-10MM	582.0	876.0	7	0	0	0	0	0	0	0	0	0	0	0	0
8	BASE-END-RIGHT	MED-DEN-FBRE-10MM	582.0	876.0	2	0	0	0	0	0	0	0	0	0	0	0	0
9	BASE-END-RIGHT	MED-DEN-FBRE-10MM	582.0	876.0	7	0	0	0	0	0	0	0	0	0	0	0	0
10	BASE-FLNTH	MED-DEN-FBRE-10MM	464.0	125.0	7	0	0	0	0	0	0	0	0	0	0	0	0
11	BASE-FLNTH	MED-DEN-FBRE-10MM	564.0	150.0	2	0	0	0	0	0	0	0	0	0	0	0	0
12	BASE-RAL-BACK	MED-DEN-FBRE-10MM	464.0	150.0	7	0	0	0	0	0	0	0	0	0	0	0	0
13	BASE-RAL-BACK	MED-DEN-FBRE-10MM	464.0	150.0	7	0	0	0	0	0	0	0	0	0	0	0	0
14	BASE-RAL-FRONT	MED-DEN-FBRE-10MM	464.0	150.0	7	0	0	0	0	0	0	0	0	0	0	0	0
15	BASE-SHELF	MED-DEN-FBRE-10MM	464.0	400.0	7	0	0	0	0	0	0	0	0	0	0	0	0
16	BUDC-BACK	WHITE-ACRYLIC-12MM	468.0	136.3	7	0	0	0	0	0	0	0	0	0	0	0	0
17	BUDC-BOTTOM	WHITE-ACRYLIC-12MM	462.0	546.0	7	0	0	0	0	0	0	0	0	0	0	0	0
18	BUDC-LEFT	WHITE-ACRYLIC-12MM	546.0	136.3	7	0	0	0	0	0	0	0	0	0	0	0	0
19	BUDC-RIGHT	WHITE-ACRYLIC-12MM	546.0	136.3	7	0	0	0	0	0	0	0	0	0	0	0	0
20	D-BASE-BOTTOM	MED-DEN-FBRE-10MM	564.0	562.0	2	0	0	0	0	0	0	0	0	0	0	0	0
21	D-BASE-BOTTOM	MED-DEN-FBRE-10MM	40.0	700.0	2	0	0	0	0	0	0	0	0	0	0	0	0
22	D-BASE-DOOR	MPC18-0AK	488.0	743.0	2	0	0	0	0	0	0	0	0	0	0	0	0
23	D-BASE-DOOR-R	MPC18-0AK	488.0	743.0	2	0	0	0	0	0	0	0	0	0	0	0	0
24	D-BASE-RAL-FRONT	MED-DEN-FBRE-10MM	564.0	150.0	2	0	0	0	0	0	0	0	0	0	0	0	0
25	D-WALL-BASE	MED-DEN-FBRE-10MM	564.0	262.0	5	0	0	0	0	0	0	0	0	0	0	0	0
26	D-WALL-OVER	MED-DEN-FBRE-10MM	40.0	714.0	5	0	0	0	0	0	0	0	0	0	0	0	0
27	D-WALL-DOOR	MPC18-0AK	488.0	750.0	5	0	0	0	0	0	0	0	0	0	0	0	0
28	D-WALL-DOOR-R	MPC18-0AK	488.0	750.0	5	0	0	0	0	0	0	0	0	0	0	0	0
29	D-WALL-TOP	MED-DEN-FBRE-10MM	564.0	262.0	5	0	0	0	0	0	0	0	0	0	0	0	0

Parts list

Enter part details manually or simply import them directly from other software packages, for example from Excel spreadsheets.

- All information available at a glance
- Edit and process data as required
- Save and re-use data as required

Your benefits at a glance:

- Full control of production costs
- Efficient cut-to-size operations
- Information instantly available on any project
- Fast, accurate calculations
- ERP/PPC compatible
- Three editions and six supplementary modules for tailor-made solutions

Optimising parameters - DEFAULT Standard Optimiser

Trims | Limits | Rules | Recuts | Offcuts | Advanced

Set the rules for cutting

Recut: Multiple - equal (selected), Multiple - unequal, Multiple - no restrictions

Head cuts: Quantity 2

Allow in rotated patterns:

Allow rotated parts:

Duplicate parts:

Show in single pattern:

Fields for defining duplicate parts:

Board orientation: Either way

Box for priority: None

Crosscut patterns: Single strip patterns, Rip first then crosscut, Crosscut first then recut

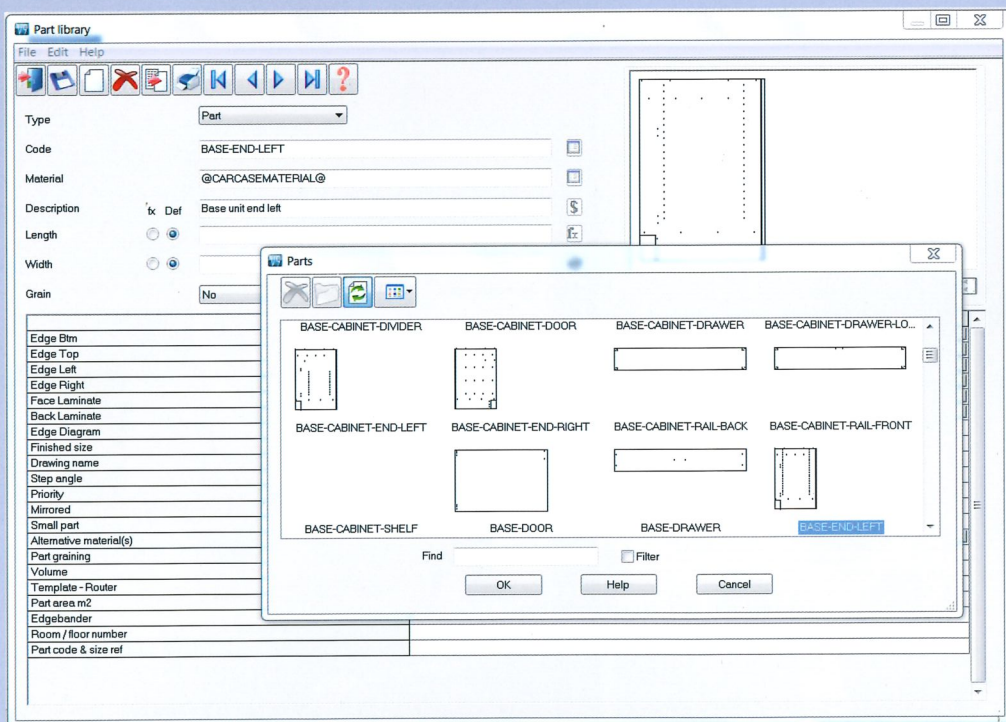
OK Save As Print Help Cancel

Optimising parameters

All necessary settings are presented in a comprehensive way with guides and graphics to support you. It will be you who sets the standards for the cutting process, not the software!

For better management and tracking of parts

This module helps you gear up for production faster by instantly generating data for all your most frequently used parts. Simply by using just the part codes to pull items into a parts list, you can enter cutting lists quickly and accurately, and create factory route cards and labels at the press of a button – speeding up despatch as well as production.

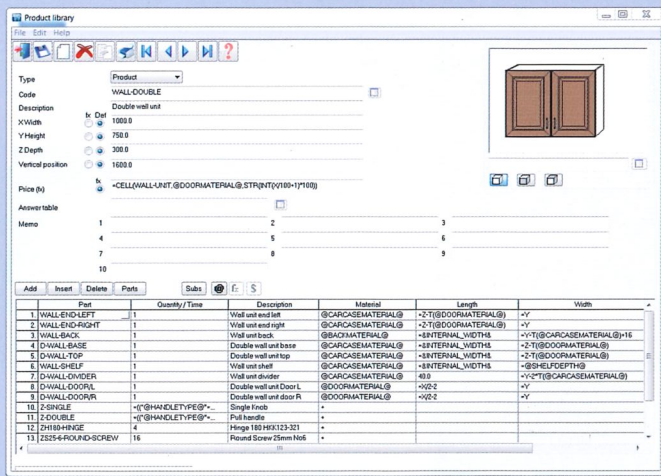
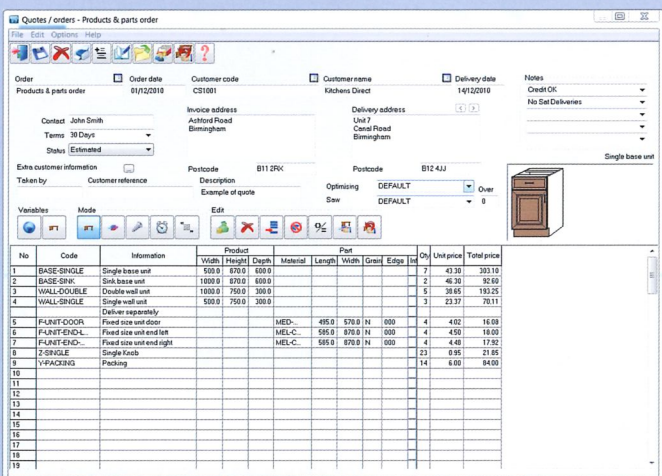


Features and benefits

- The part library can hold details of size, material, grain, edging – and plenty of user-defined information for each part.
- You can generate detailed labels with multiple bar codes and pictures, for fast setup of CNC machines equipped with bar code scanners.
- The library can also hold a list of regularly used hardware components such as hinges, screws and drawer slides with their costs.
- The part dimensions and other fields may be parametric and specified at order entry if required.
- Labels may be printed in the office in the sequence of cutting, or at the saw (with additional equipment).
- A list of operation times can be held for each part and be used to build up a full part cost.

For fast response to enquiries and orders

This module helps you create accurate quotations and process orders quickly and easily. The parametric product library enables Cut Rite to detail any job, including standard or custom products, parts, hardware and operations. You will only need to enter your data once to produce order acknowledgements, despatch notes, invoices and a complete calculation of all costs.

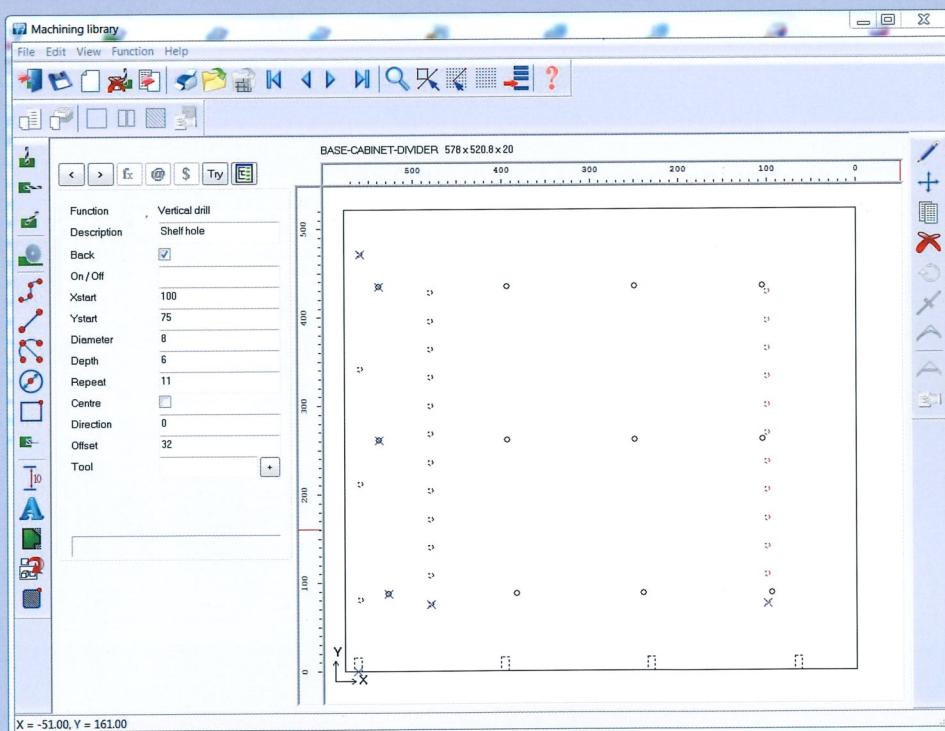


Features and benefits

- Customer database with full contact details, invoicing address, multiple delivery addresses, discounts and free-format notes fields.
- User-defined product “variables” take account of order-based requirements such as material colour and thickness, and hardware options.
- Flexible form-designer allows tailor-made documents to include your company logo, pictures, bar codes with full control of font and positioning.
- Use of formulae and user-defined tables enables automatic calculation of component sizes for special cabinets, and allows parametric pricing.
- You can use the integrated drawing library to add drawings to your product catalogue.
- You can obtain a picking list with the calculation of sundry part sizes such as solid lipping or bought-out items.

For fast setup of your CNC machinery

To streamline production into a seamless, highly efficient and accurate process, simply choose this module. It creates a fully integrated manufacturing cell, by downloading part drawings directly to your point-to-point machining centre. Parts are labelled at the saw with a bar code for the drawing reference; scanning at the machining centre provides a foolproof and fast process that guarantees each part is machined correctly.

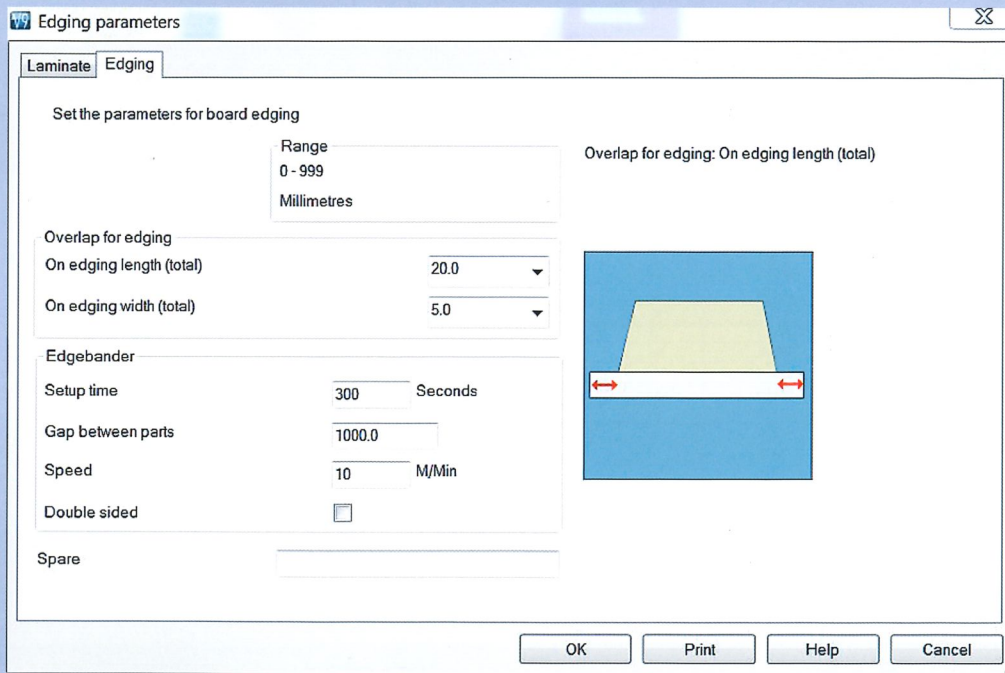


Features and benefits

- The geometry for rectangular or shaped parts can be drawn quickly using the editor, or can be imported from DXF files.
- The machining library holds parametric drawings so that, as the part size changes, the machining instructions are recalculated instantly.
- Offers support for drilling, grooving, contour routing, operations on both sides of part, vacuum pod positions, dimension lines and pockets.
- Details of depths and tooling information can be added for each operation, including speeds and other tool specific data.
- The machining interface allows direct transfer of data to most CNC-controlled machining centres via DXF and proprietary formats.
- Labels or route sheets can include the part drawing.
- Machining times can be estimated for each part.

Accurate costing of edging and laminating materials

This module simplifies planning by calculating your cut sizes in one straightforward step. It adjusts cutting sizes by edge thickness and core trim, and gives you the size of each laminate piece and edging strip. The edging layout can be shown on the part label to ensure the correct application of the edge banding.



Features and benefits

- The edging library holds description, thickness and cost of all of your edging and laminating materials.
- The edging summary lists total linear measure and cost of each edge material required for each job.
- The calculation of laminate sizes can include trim allowance and special calculations for post-formed and bull-nosed edges.
- If you're using a work-cell method then program details for each part can be passed to your edge-bander using bar codes.
- The module provides detailed estimates of edge-banding times and costs for single or double sided edge-banders.
- Edging layout graphic shows detail of corner treatment including whether adjacent edges butt together or are mitred, and if corner is rounded.

For accurate and efficient inventory management

This invaluable module protects your profit margin by minimising downtime due to lack of stock. It helps you accurately track your raw materials, adding offcuts back to stock so that no reusable material is wasted – and you can allocate sheets to jobs in advance so that you don't optimise the same offcut on different jobs.

Material	Description	Thickness	Default grain	Book	Material parameters	Picture	Type	Density
BLUE-LAM-1MM	Blue Laminate 1mm	1.0	Y	10			Laminate	0.900
CHIPBOARD-18MM	Chipboard Core 18mm	18.0	N	0				0.350
EBONY-LAM-1MM	Ebony Laminate 1mm	1.0	Y	10			Laminate	0.900
GREEN-LAM-1MM	Green Laminate 1mm	1.0	Y	10			Laminate	0.900
HARDBOARD-4MM	Hardboard 4mm	4.0	N	8	HBD04			0.750
MED-DEN-FIBRE-18MM	Medium Density Fibreboard 18mm	18.0	N	0			MDF	0.650
MED-DEN-FIBRE-25MM	Medium Density Fibreboard 25mm	25.0	N	0			MDF	0.650
MEL-CHIP-15MM	Prelaminated - White 15mm	15.0	N	0				0.500
MEL-CHIP-18MM	Prelaminated - White 18mm	18.0	N	0				0.500
MFC18-BEECH	Prelaminated - Beech 18mm	18.0	N	0			MFC	0.400
MFC18-BLACK	Prelaminated - Black 18mm	18.0	N	0			MFC	0.400
MFC18-EBONY	Prelaminated - Ebony 18mm	18.0	N	0			MFC	0.400
MFC18-OAK	Prelaminated - Oak 18mm	18.0	N	0			MFC	0.400
MFC18-RED	Prelaminated - Red 18mm	18.0	N	0			MFC	0.400
MFC18-TEAK	Prelaminated - Teak 18mm	18.0	N	0			MFC	0.400
MIRROR-GLASS	Mirror Glass (sundry)	5.0	N	0			Sundry	0.000
OAK-LAM-1MM	Oak Laminate 1mm	1.0	Y	10			Laminate	0.900
PARTICLBROD-25MM	Particle board 25mm	25.0	N	0				0.550
RED-LAM-1MM	Red Laminate 1mm	1.0	Y	10			Laminate	0.900
TEAK-FOIL	Foil-teak (sundry)	0.1	Y	0			Sundry	0.000

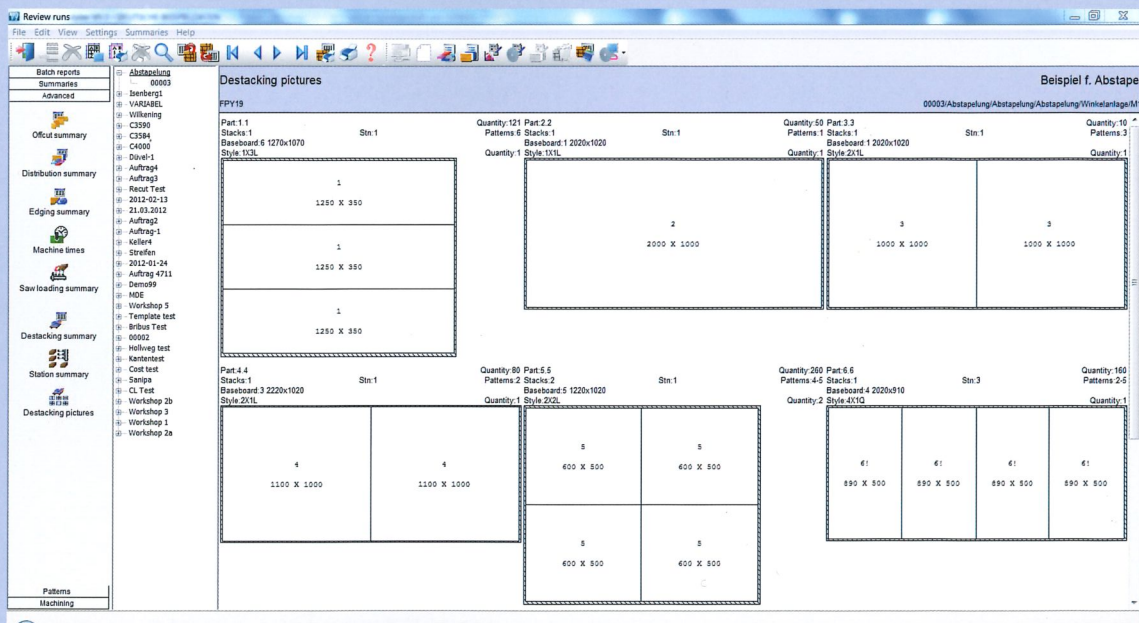
Board code	Length	Width	Information	Stock	Alloc	Order	Cost	Limit	Bin	Supplier	Min Stk	ReOrder	Grain	Material parameters	Method	Type
MEL-CHIP-18MM/01	3050.0	1220.0	BIN 150	933	13	210	3.180	0	150	General Boards Inc	0	50	N	Area		Stock board

Features and benefits

- The program helps you check stock levels, record raw material orders and book in receipts from your supplier.
- It considers available free stock and automatically adjusts stock after cutting.
- Configurable reports include stock valuation, minimum stock levels, monthly summary of stock usage and an audit trail of all stock movements.
- The program automatically updates both core material and laminate stock, when you laminate full sheets prior to cutting.
- Physical stock control of hardware and edge-banding material when used with the modules "Order processing and variable parts lists" and "Edging and laminating".
- Interface to automatic handling systems for synchronisation of board and offcut stock via SQL Server database table.

Efficient destacking and fast material flow

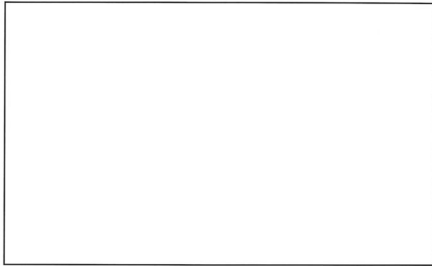
You can keep production running smoothly by using the destacking module, which streamlines throughput at the saw by planning the destacking process. It gives you a list of pallet requirements or a base-board cutting list and, based on the size of your mechanised destacking stations, will limit the number of open parts, ensuring finished items go to assembly as quickly as possible.



Features and benefits

- A cutting list for baseboards is calculated from the part sizes allowing for oversize allowance, layout constraints and maximum stacking height.
- A destacking summary for the operator shows pattern by pattern on which pallet each part must be placed.
- The layout of parts on each pallet or baseboard can be downloaded to destacking equipment or robots.
- You can print labels for pallets or stacks when used with the "Part library" module.
- The "Destacking" module includes an advanced optimising algorithm which obeys maximum station sizes when allocating parts to stations.

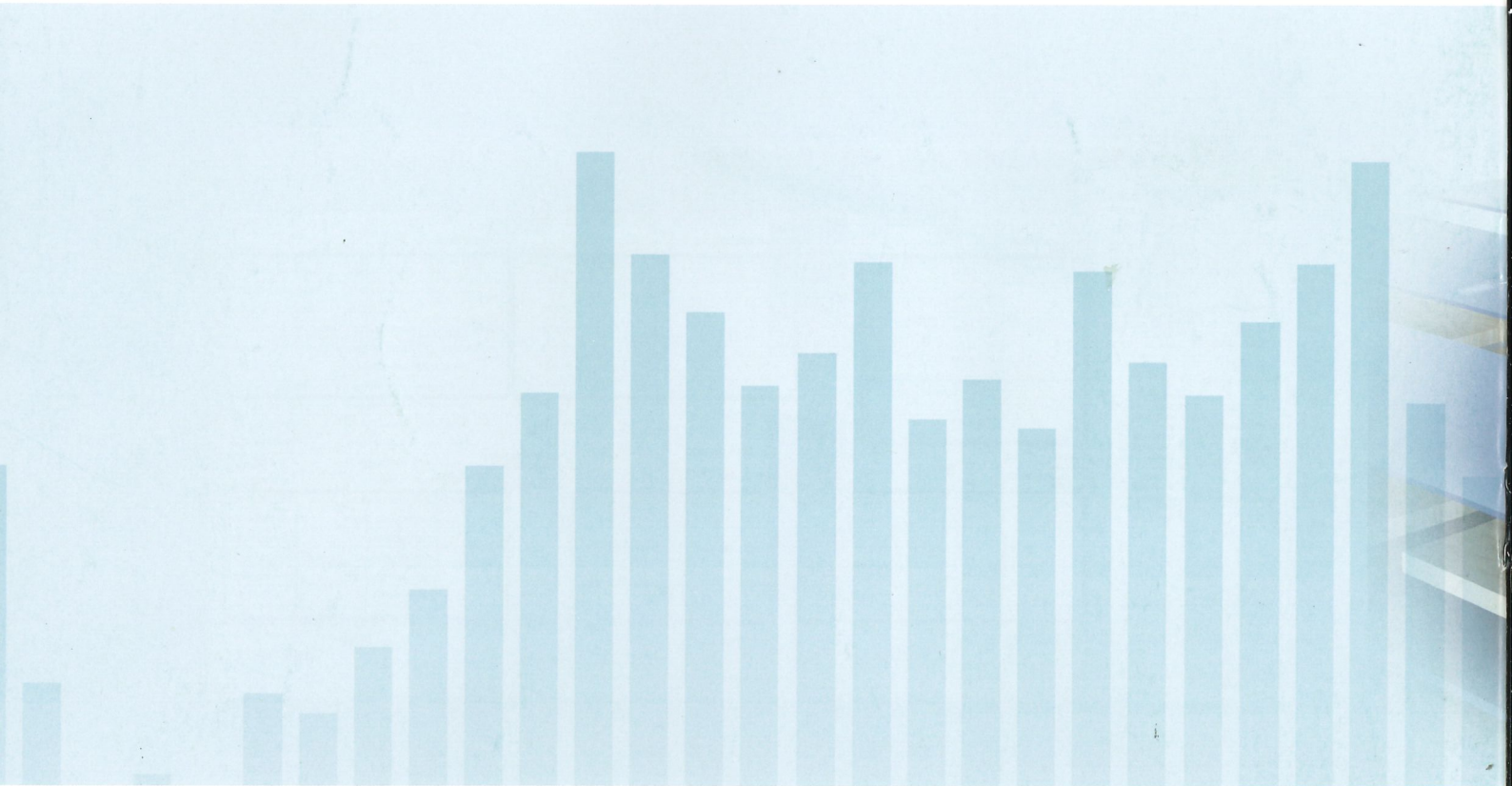
This brochure was given to you by:



**Choose the Original
Choose Success!**

For the Success of Original Technology
A VDMA Campaign

Printed 06/12. Subject to technical change without notice. Misprints and errors excepted.
Illustrations may show optional equipment not included in the basic price.



A company of the HOMAG Group



HOLZMA Plattenaufteiltechnik GmbH

Holzmastrasse 3
75365 CALW-HOLZBRONN
GERMANY
Tel. +49 7053 69-0
Fax +49 7053 6174
info@holzma.com
www.holzma.com

HOLZMA Plattenaufteiltechnik S.A.

Unipersonal
Pol. Ind. Mas Dorca
08480 L'AMETLLA DEL VALLES
(BARCELONA) SPAIN
Tel. +34 93 8431700
Fax +34 93 8431707
info@holzma.es