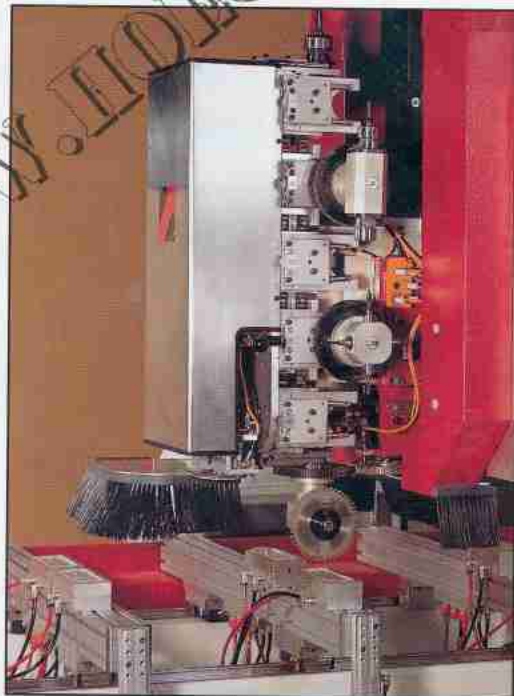


KOMPAKT - The BAZ for Interior design, carpenters and industry



 **IMA**
HÜLLHORST

The follower type tool changer with 8, 12 or 16 positions permits short tool changing times. The tool holders have a short taper or are fitted with a HSK clamping system. Controllable C axis are possible for all units.

Drilling gearbox in X and Y direction in a segment construction as a belt driven spindle $n = 8500$ r.p.m; selectable individually or in groups. All spindles turning clockwise, also for special drills.



The extension arm guarantees optimum utilization of the processing table surface:

- Loading from the front for small and medium size workpieces.
- Lateral transport of heavy workpieces, e.g. doors, worktops.

For a safe and fast clamping of different workpieces the following clamping systems have been proven:

- Aluminium beams running in the Y direction for mounting the vacuum suction cups with a central clamping and unclamping button
- Fixed vacuum grid table for direct take up of the workpiece or clamping templates
- Closes machine table with double circular suction cups

Chip transport belt integrated in the machine table for disposal of chips and offcuts to improve smooth operation.

Due to the modular constructed units belt driven milling spindles with a drive rating of 8–11 kW can be fitted in the same way as individual motors with various drive ratings.

The Kompakt is available with a 2nd main spindle with tool changer allowing synchronous processing of 2 workpieces.

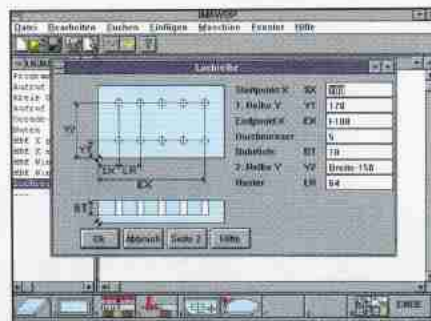
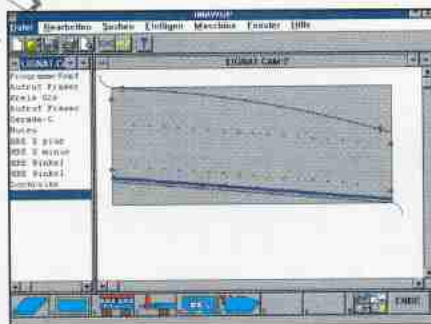
Two angular units comprising of a tool changer or separate processing motors for horizontal milling or drilling.

From single programming to fully automatic CNC program creation

FMX – The CAD/CAM connection for modern production tasks. For the first time the FMX concept permits an optional combination of software programs and machines in FMX standard.

For you the new IMA-WOP means:

- full windows functionality
- operateable on the machine controls (WIN-OS/2)
- full variation programming
- synchronously running finished part graphic
- post processing or drilling optimisation for translation into the machine language DIN 66025
- Tool data administration
- also available as a PC DOS version.



Dimensioning the boring of rows of holes through dialog error.

Workshop orientated programming from IMA/Hüllhorst

The new operator surface for simple and fast creation of processing programs under Windows.

The user does not need to undertake any elementary programming of individual programming steps. Due to the architecture of the standard Windows surface the menu masks are displaced in clear text and symbols. Dependent upon the application branch specific toolboxes are available, for example, for door processing, stair processing furniture production or kitchen worktops.

Technical data

KOMPAKT

Standard equipment

Processing range:

X axis	3.000 mm
Y axis	1.300 mm
Z axis	400 mm

Option: extendable in 500 mm pitches in the X direction

Alternate field area for pendulum processing 1.200 mm

Infeed speeds:

X axis	60 m/min.
Y axis	20 m/min.
Z axis	10 m/min.

Main spindle rating 8,0 kW

Option 11,0 kW

Main spindle rotational speed 1.000 – 18.000 r. p. m

Clockwise and counterclockwise turning direction freely programmable

Tool holder Short taper with flat surface

Option HSK clamping system

Automatic tool change magazine:

Number of magazine positions 8, 12 or 16 positions

Maximum tool diameter when fully loaded 160/150 mm (16)

Extraction:

Tool change 2 x 160 mm dia.

Chip belt 1 x 160 mm dia.

Boring units 2 x 80 mm dia.

Extraction speed 30 m/sec.

Electrics:

Operating voltage 400 V, 50 Hz

Control voltage 24 V =

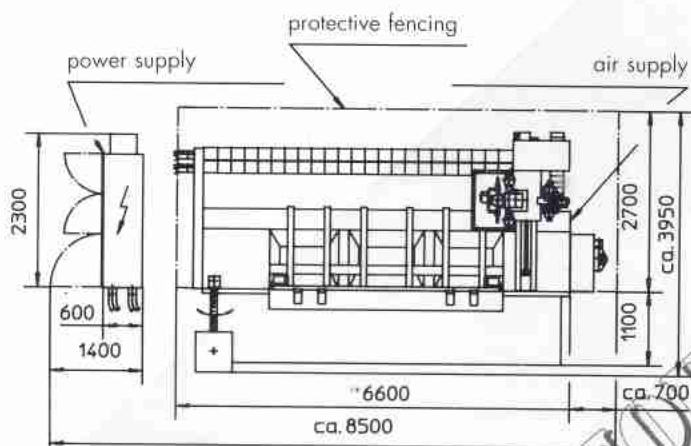
Connected value (standard) 22 – 25 kW

Compressed air:

Connection diameter 1/2"

Min. pressure 6 bar

Machine weight 6.000 – 8.000 kg



IMA
HÜLLHORST

HÜLLHORST GmbH & Co.
P.O.Box 100543
D-32505 Bad Oeynhausen
Oberbeckseiner Str. 36
D-32547 Bad Oeynhausen
Phone 05731/1790-0
Fax 05731/179019