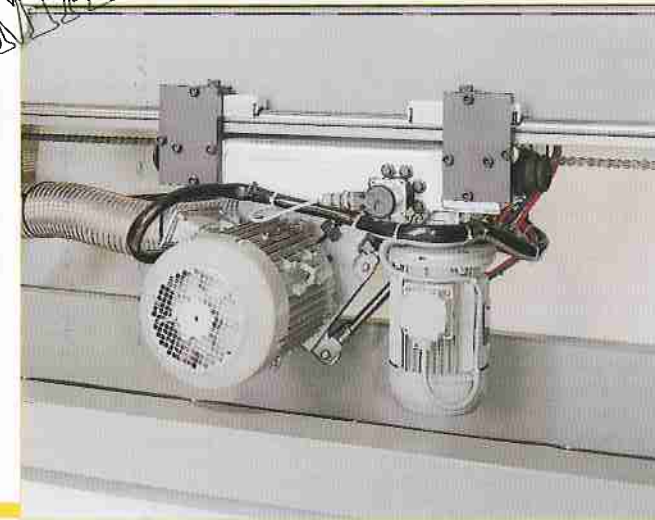
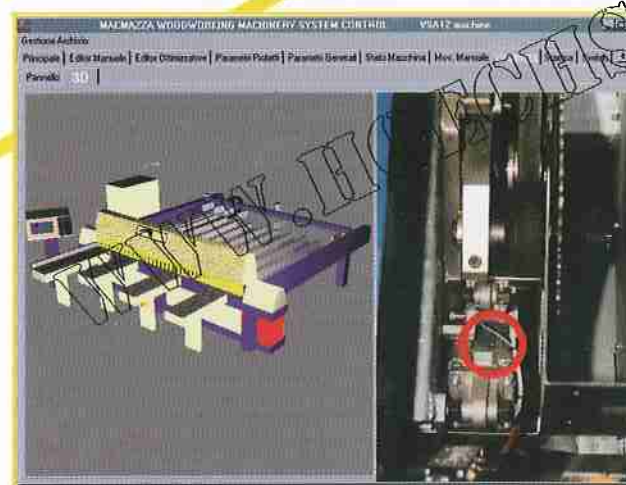
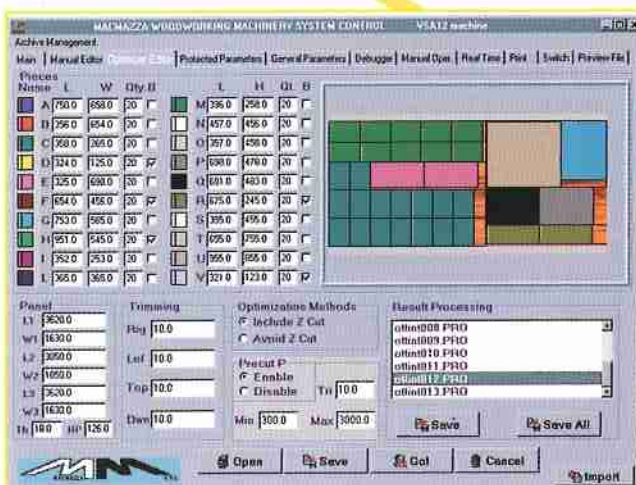
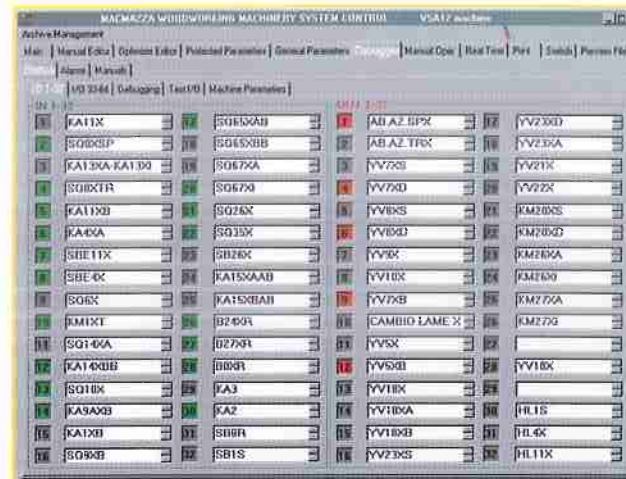
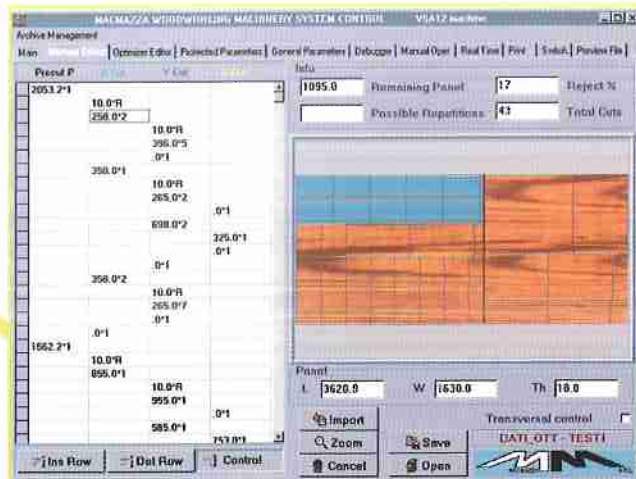
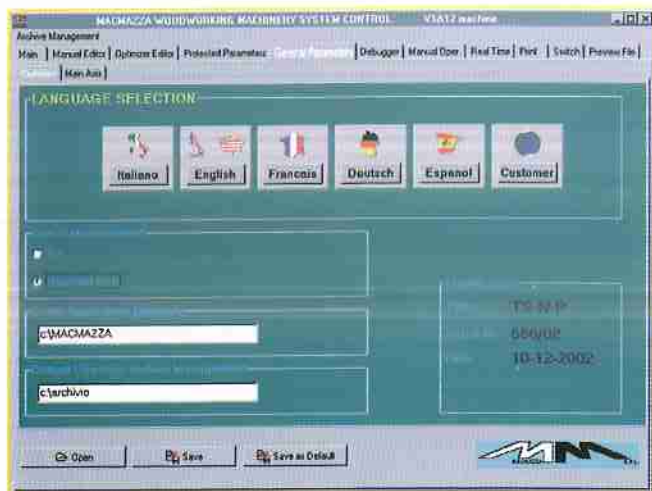


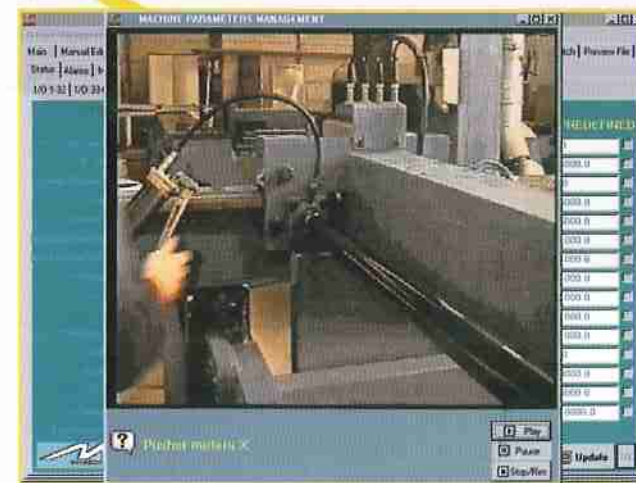
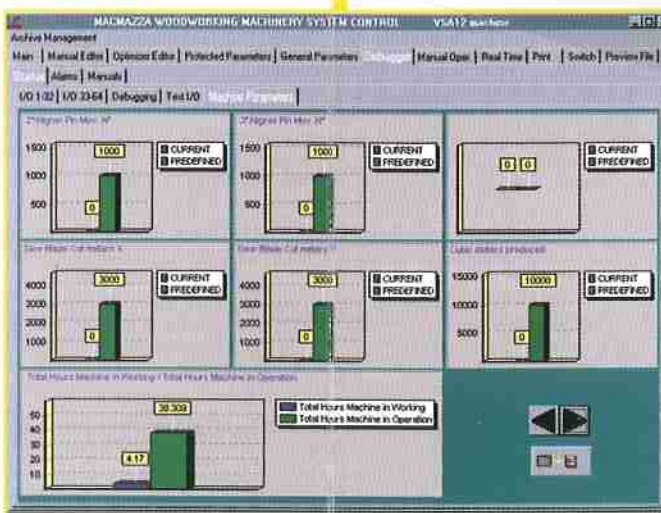
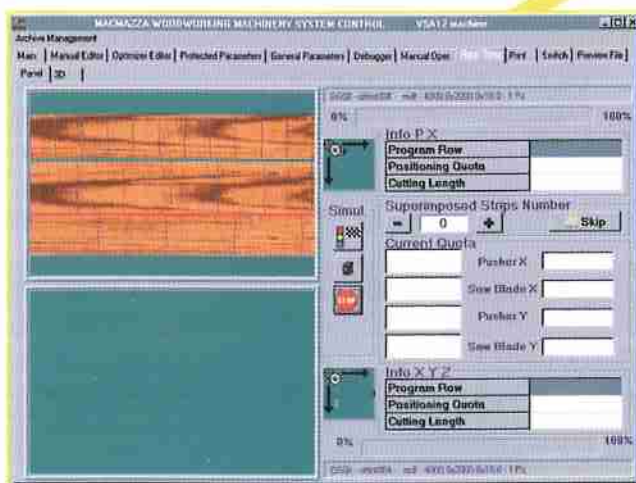
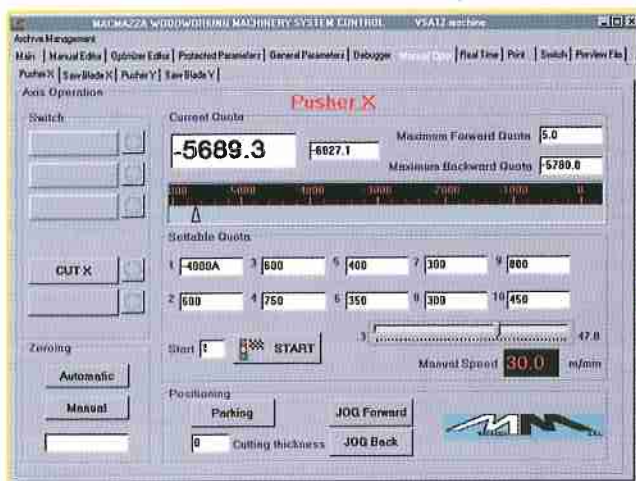
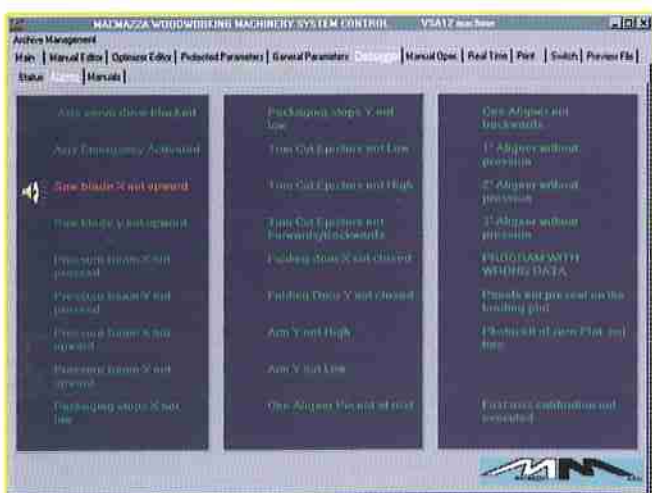
MACMAZZA
woodworking machinery

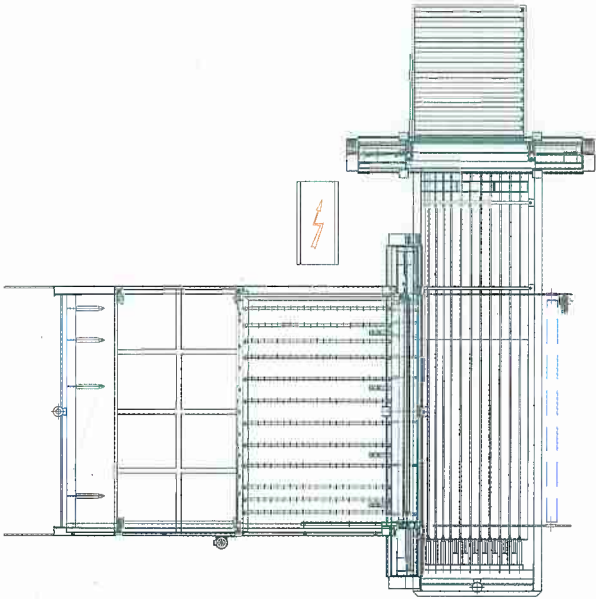
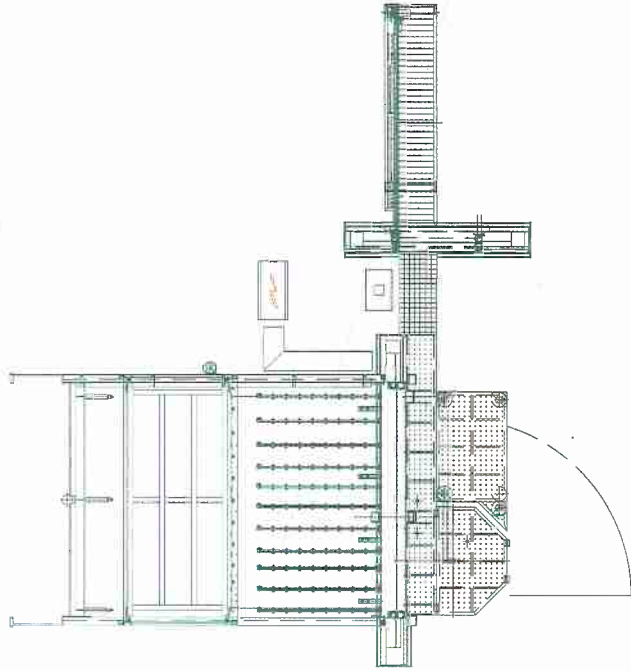
SEZIONATRICE
PANEL SAW
SCIE A
PANNEAUX
SECCIONADORA
PLATTENSÄGE

TREND SAW 100

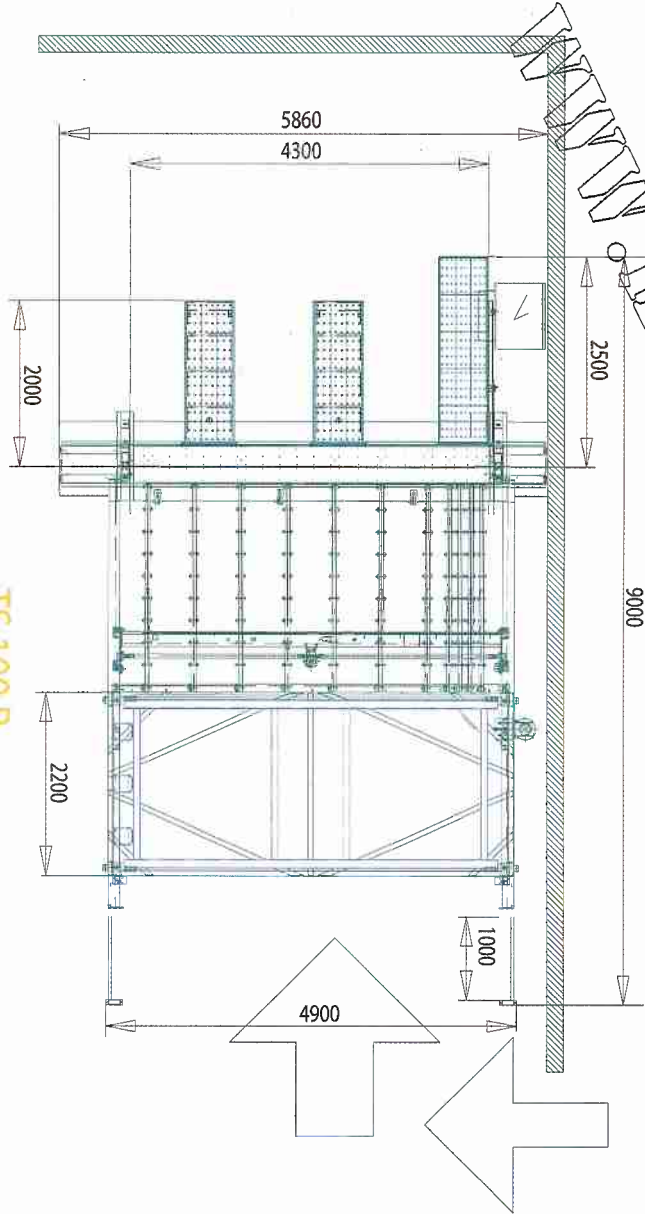



 woodworking machinery
TS100
 SEZIONATRICE
 PANEL SAW
 SCIE A PANNEAUX
 SECCIONADORA
 PLATTENSÄGE

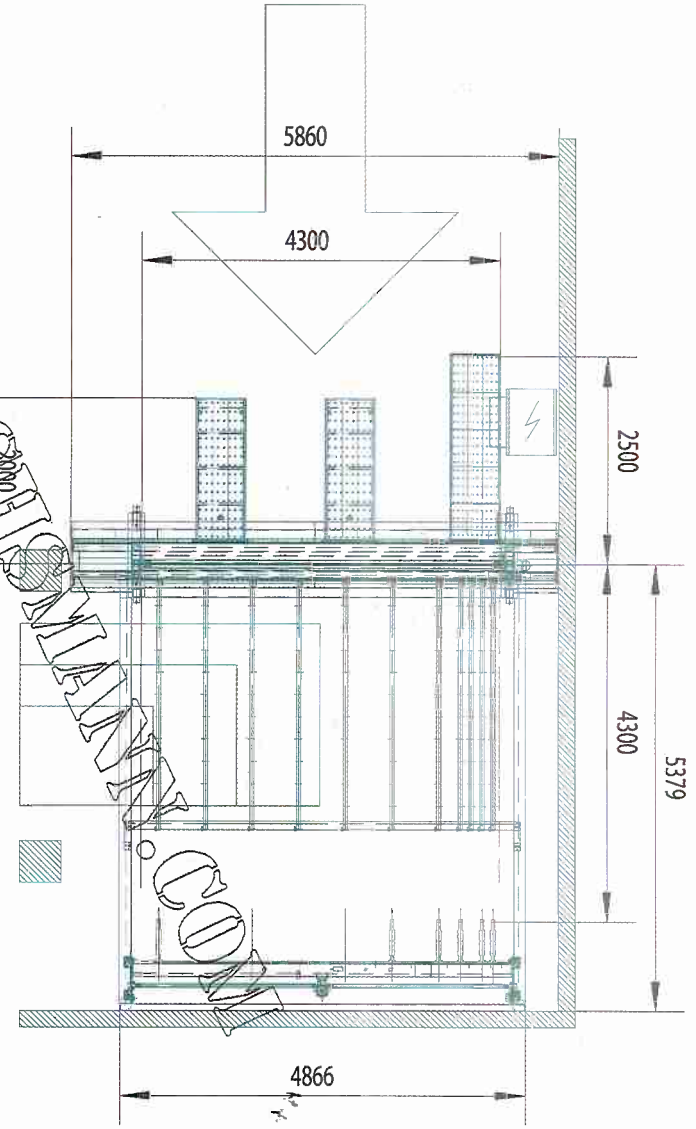


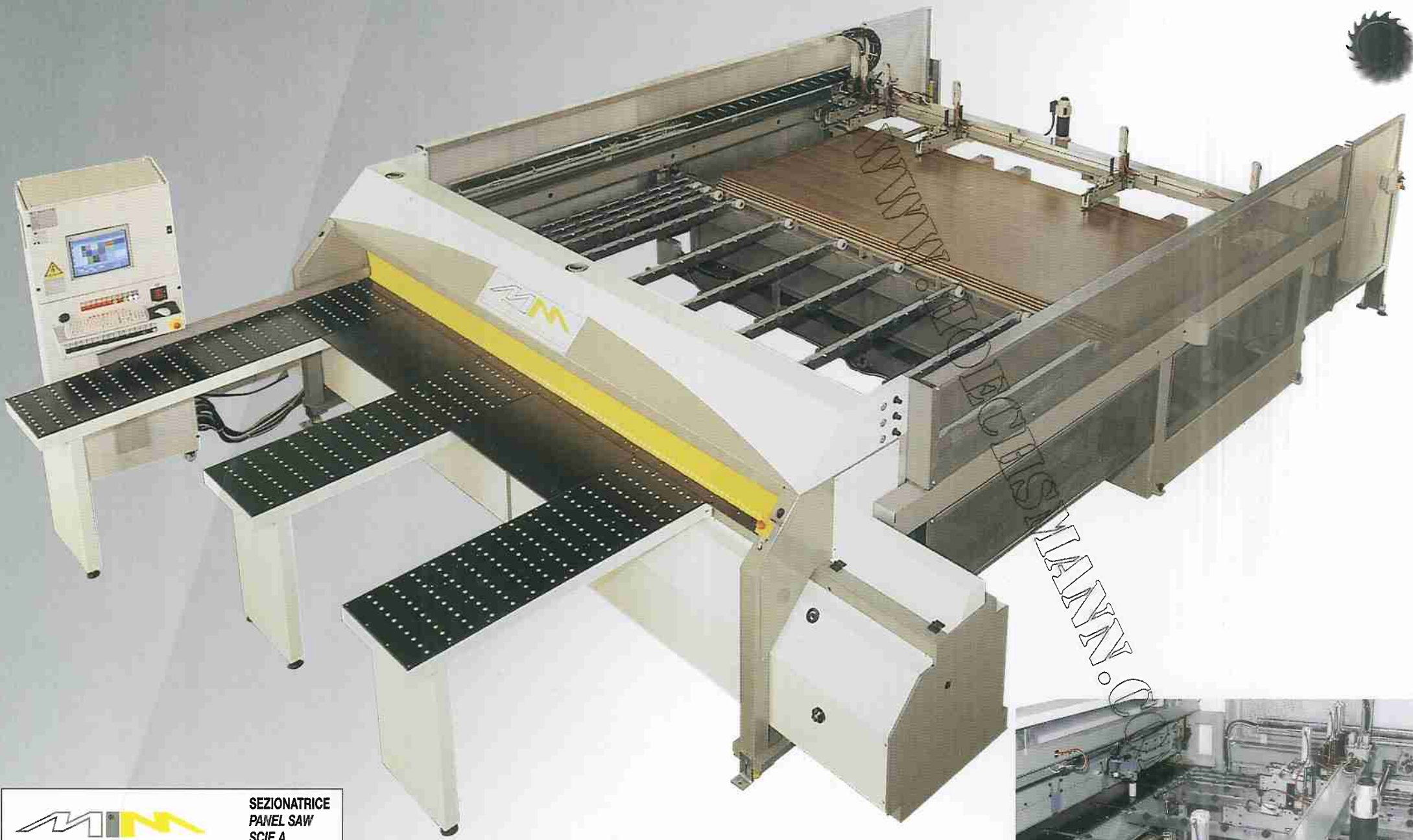


TS 100 P

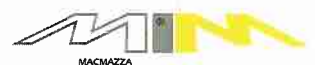


TS 100





TECNOLOGIA S.p.A.



woodworking machinery

SEZIONATRICE
PANEL SAW
SCIE A
PANNEAUX
SECCIONADORA
PLATTENSÄGE

TS 100 P



SEZIONATRICI FLESSIBILI DA 30 ANNI CONTROLLATE DA PERSONAL COMPUTER FIN DAL 1989

30 YEARS OF FLEXIBLE PANEL SAWS CONTROLLED BY P.C. SINCE 1989

TS100 MODEL

DATI TECNICI - SPECIFICATION - SPECIFICATIONS - DATOS TECNICOS - TECHNISCHE EIGENSCHAFTEN		
Lunghezza taglio Cutting length Longueur de coupe	Largueza de corte Schnittlänge	4300 mm
Spazio occupato dal basamento che contiene il gruppo lama Space needed by the main saw body Place occupée par la base qui contient le group lames Espacio ocupado por el basamento que contiene el grupo sierras Raum besetzt mit Sockel der das Sägeblattengruppe enthält	lunghezza - length - longueur largueza - länge container box	5860 mm 20'
Altezza taglio Cutting height Hauteur de coupe	Altura de corte Schnithöhe	90 mm
Motore lama principale Main blade motor Moteur lame principale	Motor sierra principal Motorstärke Hauptsägeblatt	15 HP
Diametro/foro lama principale Main blade diameter/hole (bore) Diamètre / alesage lame principale	Diámetro/agujero sierra principal Durchmesser hauptsägeblatt / Bohrloch	350 (355) / 75 mm
Velocità avanzamento carro lama Saw-carriage forward speed Vitesse d'avancement chariot de sciage	Velocidad avance carro (de) sierras Vorschubgeschwindigkeit Sägeschlitten	3 + 60 m/min.
Velocità ritorno carro lama Saw-carriage return speed Vitesse de retour chariot de sciage	Velocidad regreso carro de sierras Rücklaufgeschwindigkeit Sägeschlitten	60 + 100 m/min.
Velocità spintore / Posizionatore Pusher speed / Positioner Vitesse pousseur / Positionateur	Velocidad empujador / Posicionador Schiebergeschwindigkeit Schieber / Positionierer	2 + 40 m/min.
Velocità ritorno spintore Pusher return speed Vitesse retour pousseur	Velocidad regreso empujador Rücklaufgeschwindigkeit Schieber	40 + 60 m/min.
Bocche di aspirazione Dust extraction outlets Sorties d'aspiration	Bocas de aspiración Absaugstutzen	4 @ 120 mm
Aspirazione polveri Dust extraction Vitesse de l'air aspiré	Aspiración polvos Staubabsaugung	4000 m³/h 2500 N/m²
Peso Weight Poids	Peso Gewicht	4500 Kg -7000

Tensione (da specificare su ordinativo) Volts-HZ (specify at the order)

Rumorosità e sicurezza secondo l'attuale normativa internazionale in vigore / Noise and safety according today international rules

Caratteristiche e dati tecnici non sono impegnativi. Ci riserviamo di apportare quelle modifiche che siano da noi ritenute opportune.
Technical details and features are not binding. We reserve ourselves the possibility to proceed to all modifications we should consider appropriate.



SEZIONATRICE
PANEL SAW
SCIE PANNEAUX
SECCIONADORA
PLATTENÄGE

MACMAZZA s.r.l. - Via Mondini, 72 - 61100 PESARO (ITALY)

Tel. 0721/288000 - Tel. Assistenza /Service 0721/288776 - Fax 0721/288001

<http://www.macmazza.it> - E-mail: info@macmazza.it