

HOMS-410K with 9 working shafts and feeding unit

Ca 120.000 E.

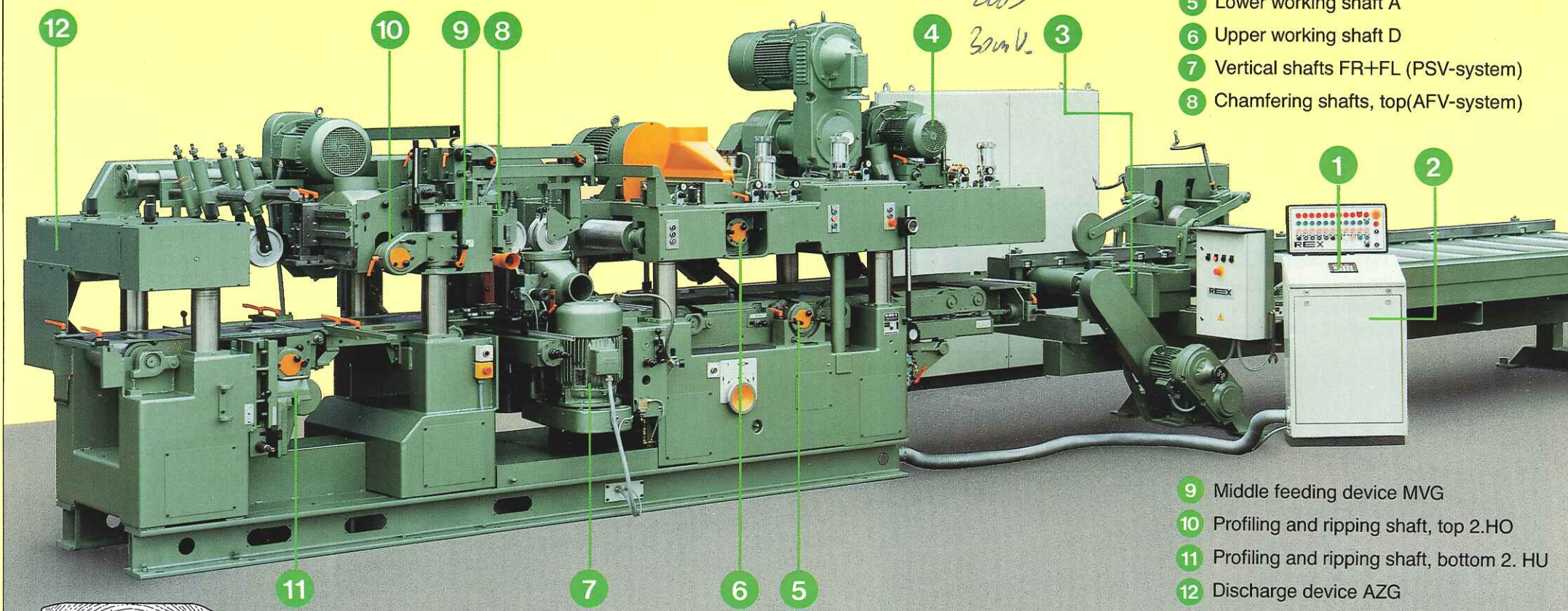
mit Passan
4 Werten

2003

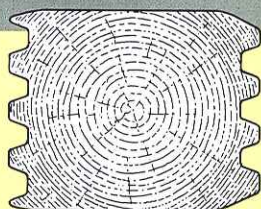
3mV.

Explanation of Signs

- 1 2-axis positioning control
- 2 Free standing control desk
- 3 Feeding unit
- 4 Scoring unit REO
- 5 Lower working shaft A
- 6 Upper working shaft D
- 7 Vertical shafts FR+FL (PSV-system)
- 8 Chamfering shafts, top (AFV-system)



- 9 Middle feeding device MVG
- 10 Profiling and ripping shaft, top 2.HO
- 11 Profiling and ripping shaft, bottom 2. HU
- 12 Discharge device AZG



The economic fluctuation during the last years as well as the extremely increased rate for jobs and material, have shown the woodworking industry that these difficulties cannot be overcome by conventional manufacturing methods.

Due to the variety of products, and as the market requires, it is more important nowadays, to increase capacity as well as quality, without increasing the company workforce.

The heavy duty planing and moulding machine HOMS-410-K is the result of our long years' research and development. This completely novel type of machine is successfully employed in the field of solid timber machining, and particularly in the medium-sized quantity production.

The unit construction system enables nearly every spindle arrangement and -number; therefore the machine will suit the respective customers individual requirements.

The entire superstructure of the machine is supported on both sides and contains the large, bilaterally supported feed rollers as well as the planing shafts. The motor-driven adjustment of the entire upper part, including all pressure devices, enables a quick adjustment.

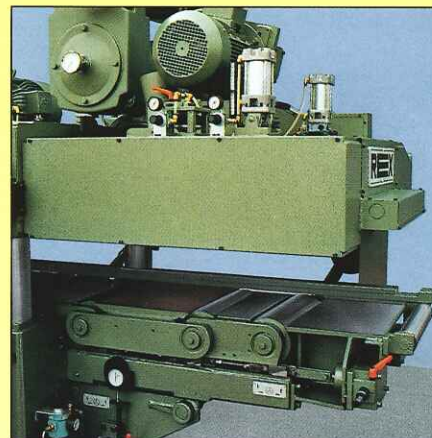
The result: **Short setting periods**

Technical Data:

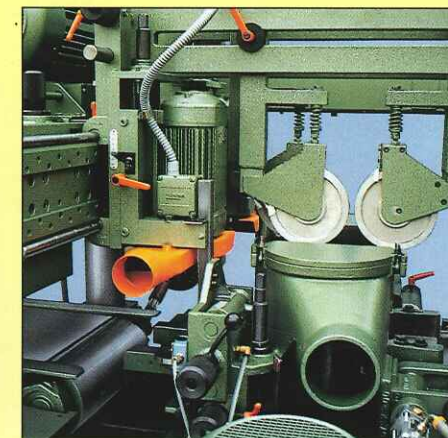
Working width	310 + 410 mm
Working height	210 + 250 + 300 mm
Infinitely variable feed speed	6-48/60/80 m/min
Revolutions of the shafts	6000 rpm
Diameter of the shafts	40 + 50 mm
Flying circle of the knife shafts dia.	180 mm
Flying circle of the vertical shafts dia.	140-200 mm
Flying circle of the profiling shafts dia.	max. 250 mm
Diameter of the feed rollers	261 + 155 mm
Motors up to 37 kW available.	

A great number of special accessories are available, e.g.

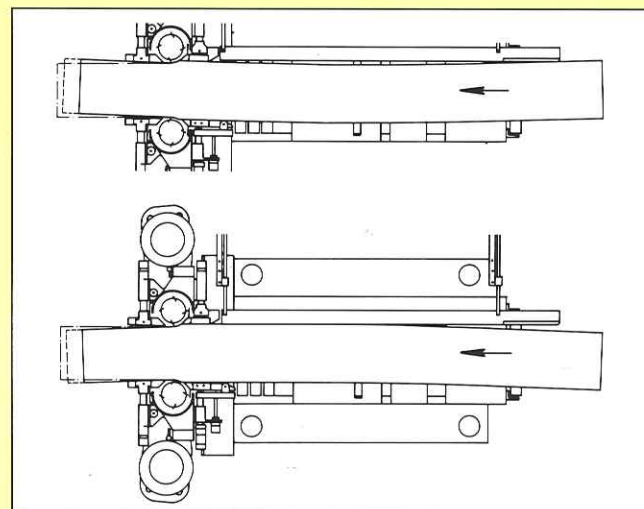
- Reinforced motors for feed and working shafts
- Built-in knife-equalizing and honing devices
- Movable working spindles
- Electronic measuring and indicating system
- CNC-controls with screen
- Feeding devices/mechanization



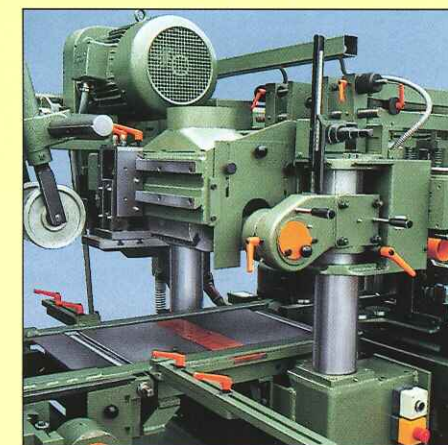
Upper scoring unit — REO — with driven feed rollers top and bottom



Chamfering device — AFV-system adjustment together with the vertical shafts, including upper pressure



PSV—system, parallel-mobile vertical shafts with pneumatic side pressure



Profiling shaft, top 2. HO tool dia. max 250 mm motor power up to 15 kW

REX - Maschinenfabrik

Georg Schwarzbeck GmbH & Co. KG · D - 25410 Pinneberg

☐ 2027 · ☎ (0 41 01) 704-0 · Fax (0 41 01) 70 41 15 · ☎ REXmaschinen · West-Germany

<http://www.REX-Maschinen.de>
E-Mail: info@rex-maschinen.de