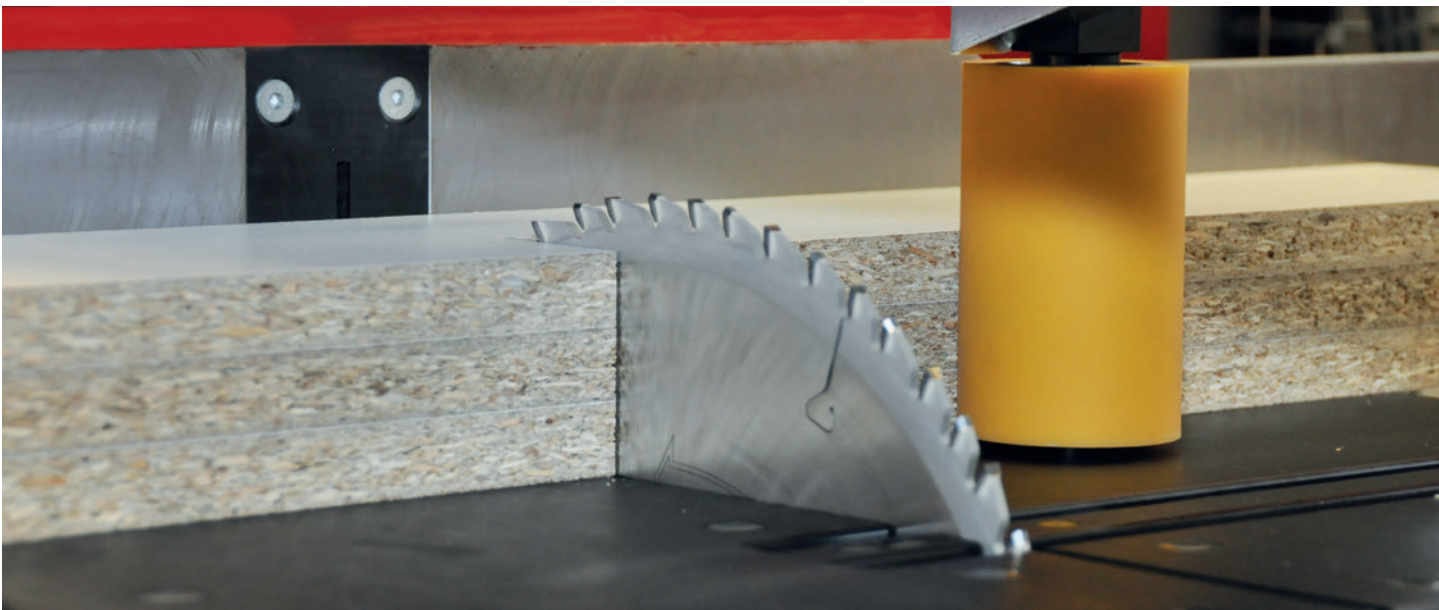


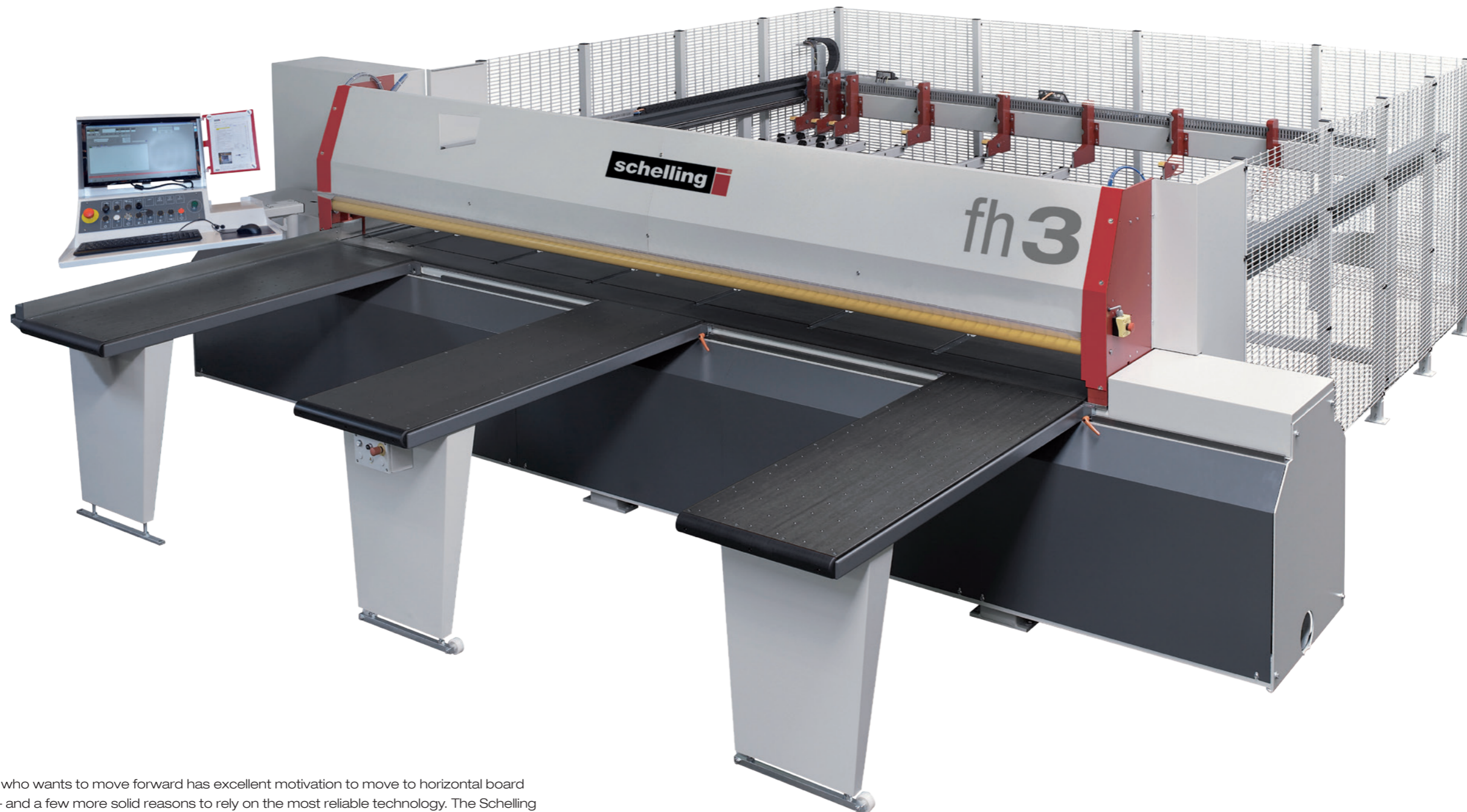
Cut-to-size saw fh 3

Your solid entry into
horizontal board cutting.



Clear decision for
groundbreaking technology.

schelling



Anyone who wants to move forward has excellent motivation to move to horizontal board cutting – and a few more solid reasons to rely on the most reliable technology. The Schelling fh 3 horizontal pressure beam saw offers everything you expect from a machine, opening the door to production cutting to size of boards. It rationalizes your work, it's reliable, and its precision is unbeatable.

For demanding craftsmen, but also for any industrial shop that tends to work with smaller lot sizes of boards, the Schelling fh 3 offers solid technology, simple operation, high functionality, and exemplary support.

Clever motorization, a massive design, intelligent details, the groundbreaking Schelling control software, and helpful options make the Schelling fh 3 your first choice. And its excellent price/performance ratio makes the decision easy.

Unmistakably Schelling: Precision for life

The Schelling fh 3 is the most compact saw of the well-known brand and it is a Schelling through and through. That's apparent first and foremost from its no-compromise demand for life-long precision. To achieve that, the industry's technology leader relies on solid technology all around. This means in particular: massive, heavy construction. Vibration and torsion are thus suppressed before they start.

The motor in the Schelling fh 3 is appropriately powerful. With an output of 14 kW, it has just the power you need – no more, no less. Its satisfying power ensures quick processing and reduced cutting times.

Thanks to the massive steel construction of the machine table, it is possible to use smaller saw blade diameters. That means less vibration, better cut quality, longer service life, and more cutting power for the same motor output.



Air flotation table parking station – for improved material handling

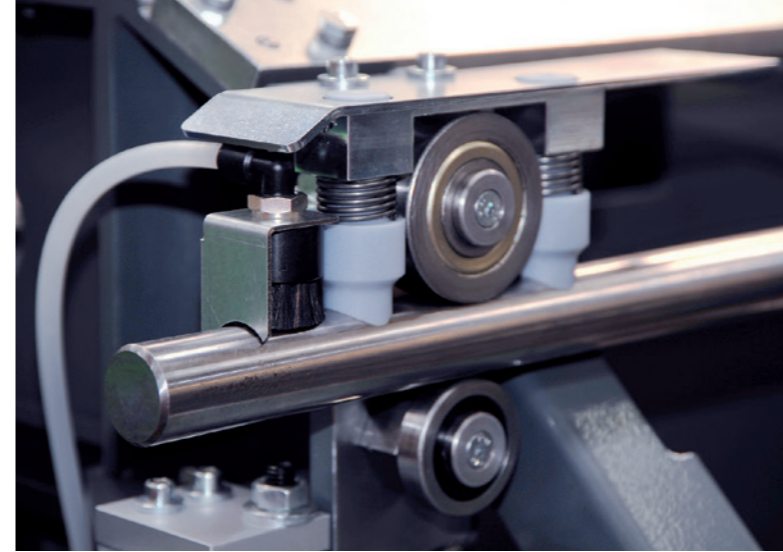
The machine's bottom plate is designed as a precision table of massive steel and equipped with a calibrated table surface. 100% table levelness ensures consistent scoring depth and absolutely precise cuts. The air flotation on the machine table comes as a standard feature.

Standard machine design

Best equipment in its class

- Stationary air flotation table
- Moveable air flotation table
- Start/stop and emergency stop on the second air flotation table
- Air flotation table parking station for improved material handling
- All clamps have double clamp fingers
- Powerful 14 kW saw motor
- Saw carriage with rack and pinion drive
- Precision guides for saw carriage – 10-year warranty on hardened guide shafts
- Air flotation in the machine table
- Automatic cutting height adjustment
- Automatic cleaning system for saw carriage
- Quick-action saw blade flange for easy and fast change
- Scoring unit with 1.5 kW output
- Electronic scorer adjustment
- Workplace lighting
- Automatic saw blade measurement function
- Automatic cut length adjustments
- Strip aligning device can be pre-positioned automatically
- Controlled pressure beam short stroke
- Viewing screen in in pressure beam cover
- Maintenance instructions
- Dual function measuring system on feeder
- Industrial PC with Windows 7 operating system
- MCS GUI-based operator guidance
- 22" colour screen
- Notice board on control panel
- Remote diagnostics
- Ergonomic working height
- Compact design

The strip aligning device upstream from the saw remains on the material even during the cut and guarantees maximum angular accuracy. The alignment force is adjustable. Thus even sensitive or narrow board strips can be cut precisely.

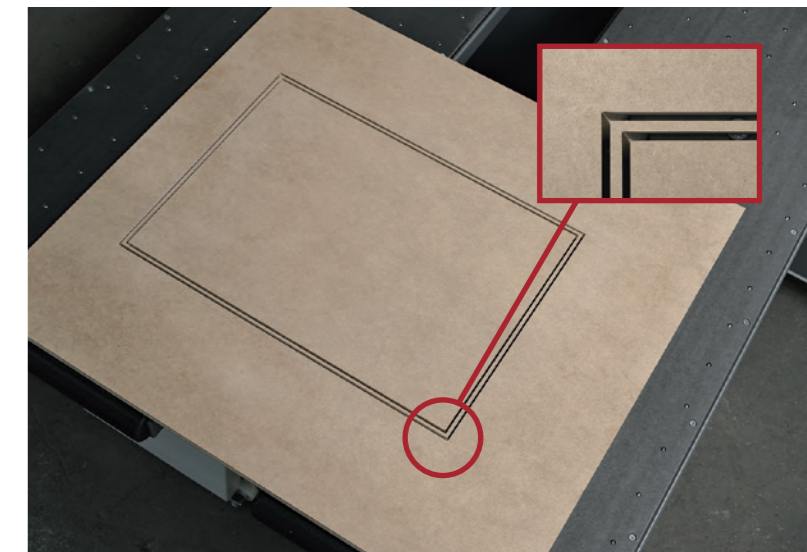
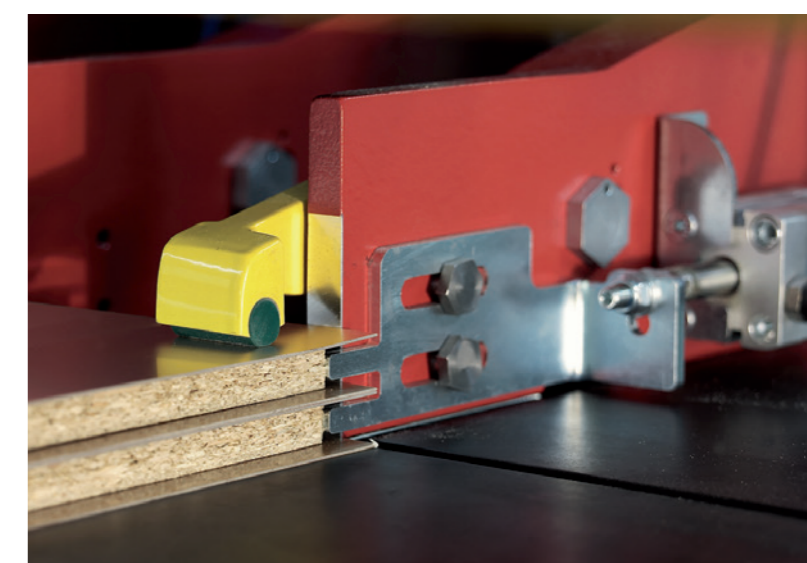
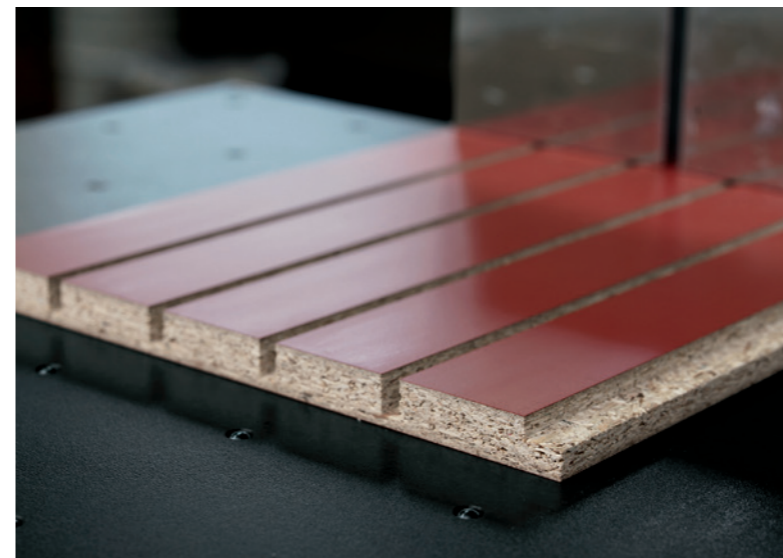


Automatic cleaning system for the guide shafts of the sawing carriage. Service-free, no-wear guide system.

Both the saw and feeder carriage are equipped with the special Schelling high-performance round rod guides. This ensures precision and reduces maintenance costs.

Optional machine design

- Groove device
- Cut windows and insert grooves
- Label printer
- Formatting device
- Additional clamps
- Infinitely adjustable clamps
- Angular cut device
- Continuously adjustable rpm control on the main saw
- Post-forming with scoring unit
- Laser alignment light
- Power-Plus Package with 102 mm saw blade projection

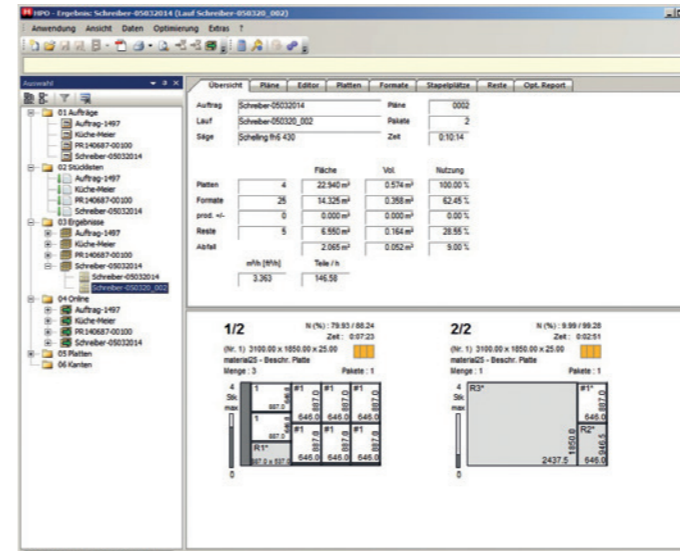
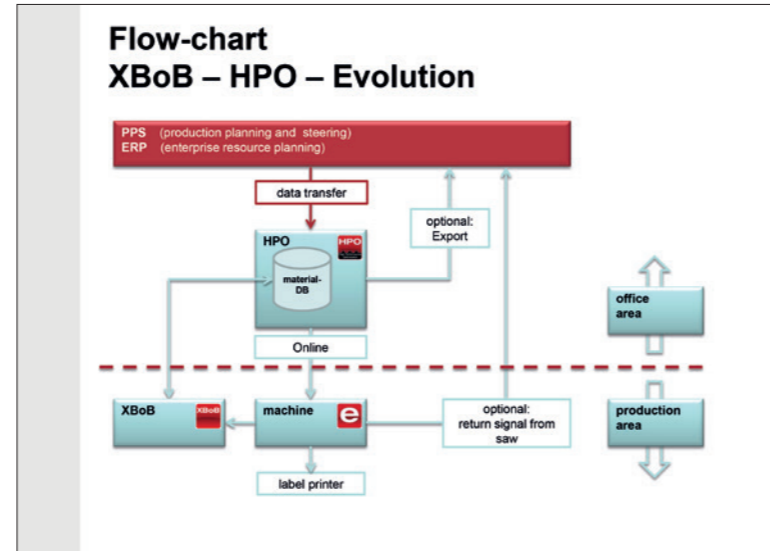


Example application: Window cutting

Groove device (optional)

Intelligently controlled for higher output.

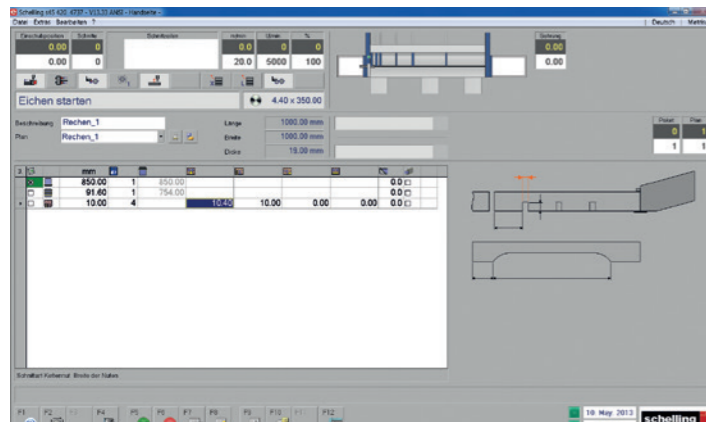
The Schelling MCS Evolution control makes using the fn 3 efficient right from the very beginning and quickly provides you with high degree of automation. Open interfaces mean that the machine can be easily integrated in existing systems and easily controlled and programmed from an office PC. A new diagnostic function for peripherals facilitates the work of machine operators, maintenance personnel and remote hotline maintenance and proves its worth right from initial commissioning. The control desk with the MCS Evolution and the Schelling HPO optimisation software turns work into pleasure. Sequences are presented in real-life mode – with unsurpassed fault diagnostics. Self-explanatory operator guidance practically excludes handling errors, and increases availability and saw efficiency.



HPO cutting plan optimization saves time and money.



The latest version of the HPO cutting plan optimisation offers new functions for productivity and operating convenience. Multi-core use ensures the speed available from state-of-the-art hardware is effectively utilised. Thus computing times are reduced by as much as 60 %. In addition the system works with the latest computer core. Another new feature is that the appearance of plans can be virtually set as desired, on request the optimal un-machined panel can be determined, the print function can be configured and searching has been even more clearly designed.

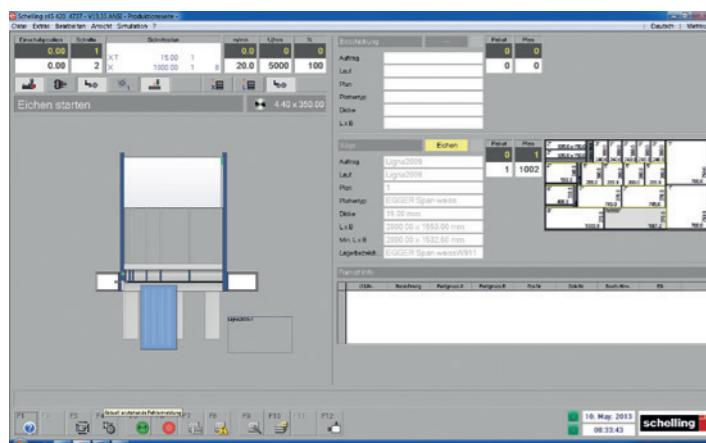
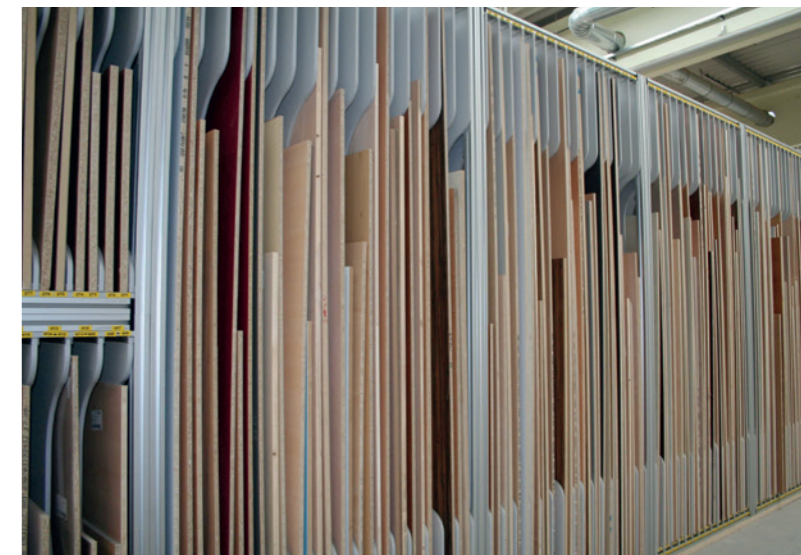


The production data reporting of the MCS evolution PLC logs all relevant operating data, such as operating hours and travel distance of the saw carriage, feeder, pressure beam, etc. The running data of the saw blades are also captured individually.

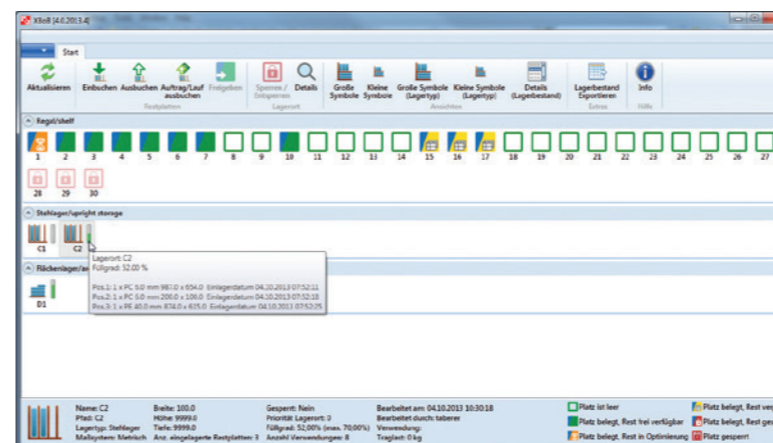
XBoB brings order to waste.



With the XBoB remainder management program, board remainders can be managed in a manual store. Reminders automatically are booked in and out in interaction with the machine controller. In addition, XBoB is the interface from the machine controller to the optimisation program. Reminders that accumulate can be re-planned and used without delay in the optimisation. An easy and safe system for maximum utilisation of material.



Display of the current cutting pattern, the cut, the order, and the material on the operator screen. The newly developed optical power display aids easy sight monitoring of the saw motor power. (Only with the continuously adjustable RPM control option).



Technical data

Saw blade

Diameter	300 mm / 12.000"
Projection	82 mm / 3.250"

Saw feed rate

Forward	up to 100 m/min / 328 ft/min
Reverse	100 m/min / 328 ft/min

Scorer

Diameter	180 mm / 7.000"
----------	-----------------

Performance

Saw motor	14 kW / 19 HP
-----------	---------------

Feed rate

Forward	up to 80 m/min / 262 ft/min
Reverse	120 m/min / 393 ft/min

Clamp opening

84 mm / 3.250"

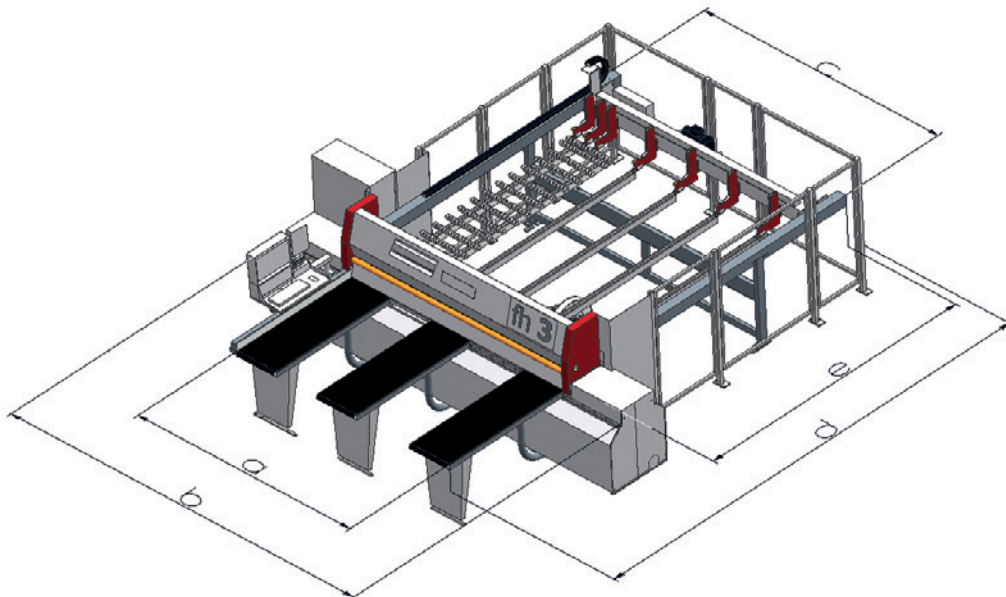
Dimensions of fh 3 manual

	fh 3 320	fh 3 420	fh 3 580
a	3210 / 126.50"	4210 / 165.50"	5810 / 228.75"
b	5200 / 204.75"	6200 / 244.00"	7800 / 307.00"
c	3850 / 151.50"	4800 / 189.00"	6410 / 252.25"
d	6260 / 246.50"	7300 / 287.50"	8990 / 354.00"
e	4200 / 165.25"	5250 / 206.75"	6940 / 273.25"

Dimensions - mm/inch

Weight

fh 3 320	5.000 kg / 11,023 lbs	fh 3 420	6.000 kg / 13,228 lbs
fh 3 580	8.500 kg / 18,739 lbs		



Illustrations in this brochure may show special versions.
Technical changes and errors excepted.