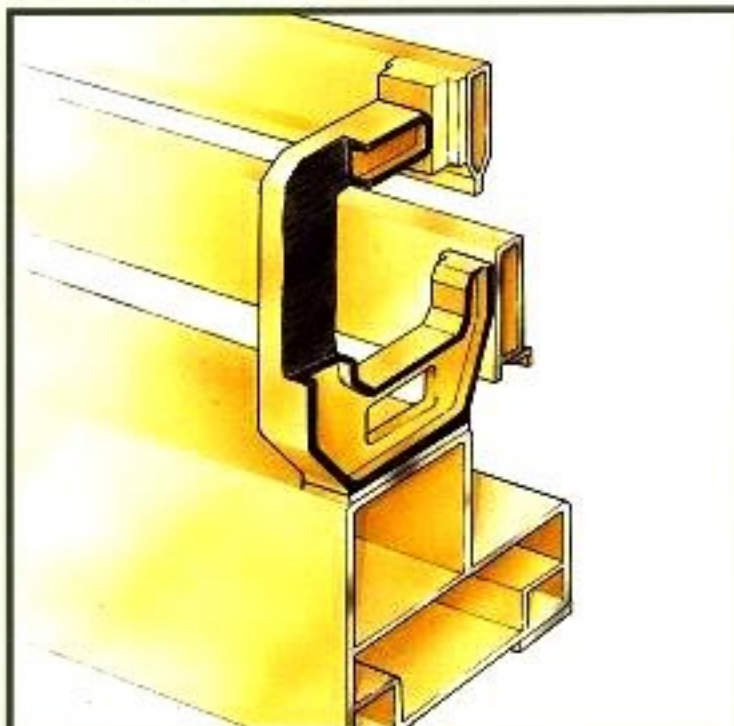


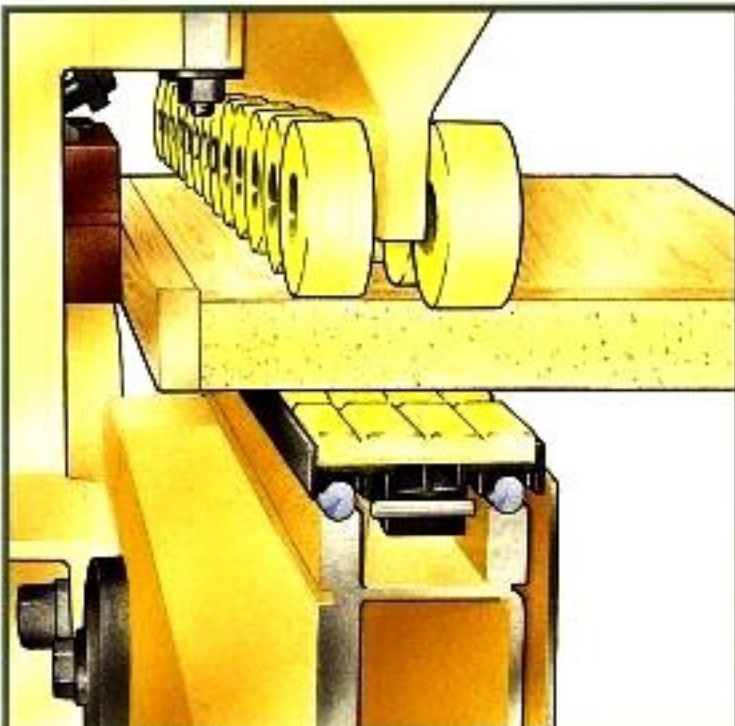


The B4L/ B5L edge banders are designed for the application of veneer or laminated strips, PVC or other plastic reeled strips. Moreover, solid wood strips with a maximum thickness of 25 mm. (optional) can be applied thanks to the particular design of the machine which requires an angle of insertion between strip and panel of only 6°.

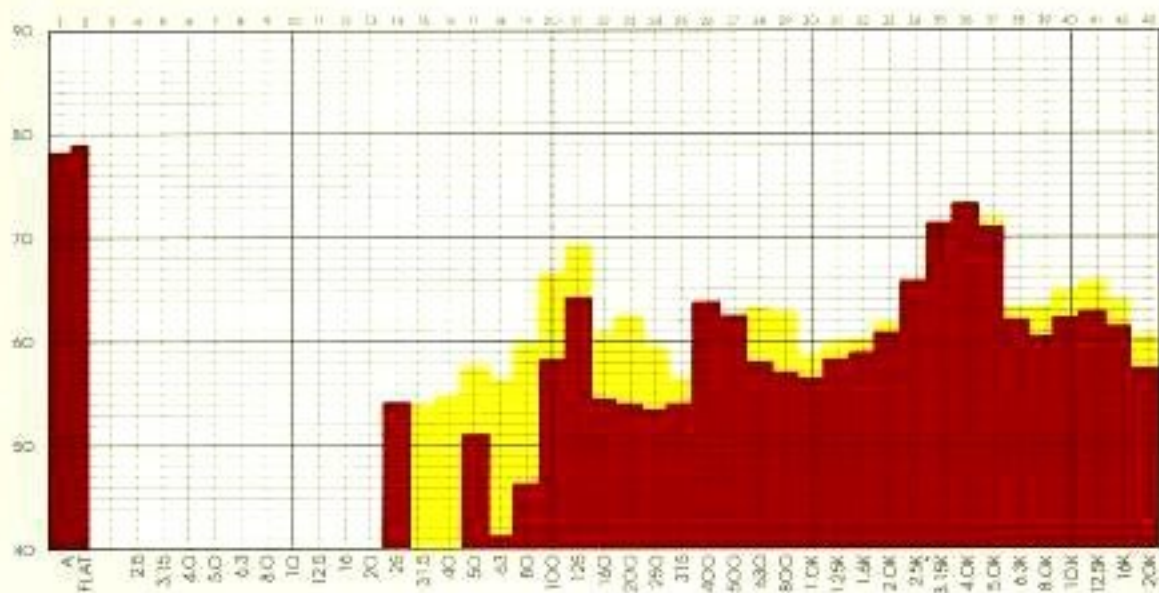
TECHNOLOGY AND RELIABILITY



BASE. The base is made of normalized tubular steel and is therefore not subject to bending or twisting. All operating groups are anchored to sturdy columns in order to guarantee maximum rigidity and stability during operation.

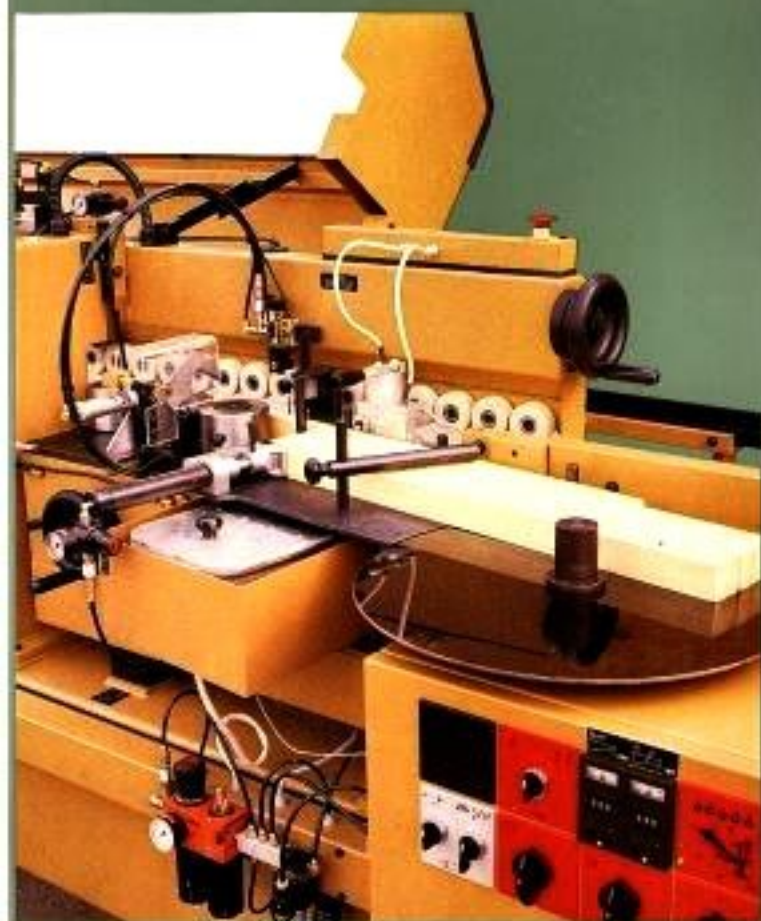


FEED SYSTEM. The feed of the table pad on double, machined, cylindrical guides guarantees straight-line feed of the panel and resists lateral loads without producing vibrations.



Prove secondo norme DIN N. 45635/1654, metodo K, livelli sonori in dB(A) riferiti al campo libero.
 Tests according to DIN regulations N. 45635/1654 with K method, noise levels in dB(A) surveyed in free environment.

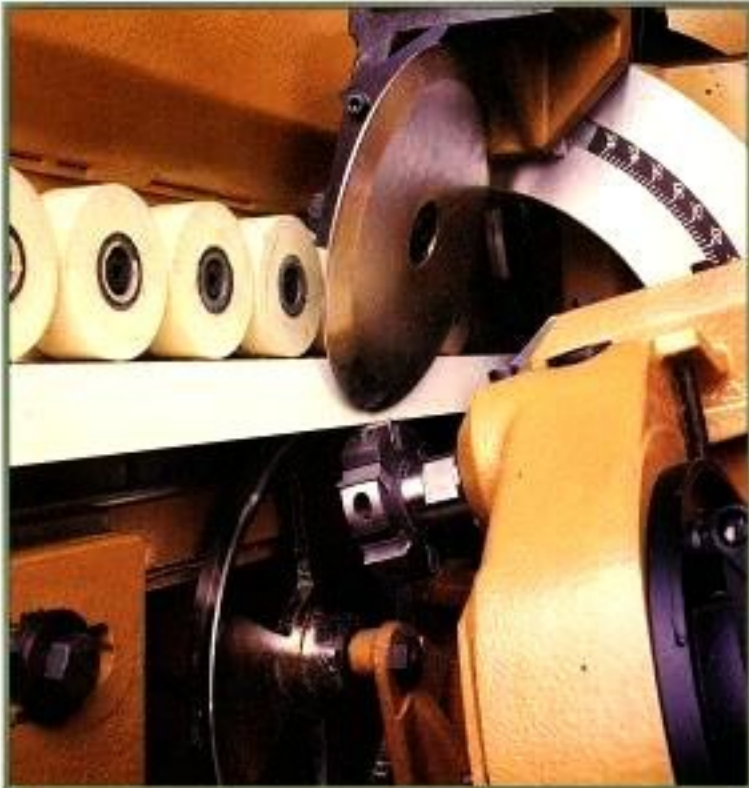
OPERATING GROUPS. The B4L/B5L edge banders are equipped with belt drive which absorb less electrical current, are more powerful, less noisy and offer long-term reliability.



GLUE TANK. The teflon coating inside the tank allows quick changes of the glue colour. The operating group containing the glue tank and the pressure rollers has been designed to permit banding even on surfaces with a slant up to 6° . In order to obtain perfect adhesion of the banding material to the panel, and adjust slight perpendicular unevenness, the pressure rollers have been designed to operate with differentiated inclinations. By means of a diagnostic system which controls the functioning of the resistances of the glue tank group, the B4L/B5L edge banders will always remain in perfect working order. This system permits the operator to immediately locate the defective resistance and proceed with its substitution.



THERMOSTAT. With a double thermostat, on the tank and on the glue spreading roller, the operator can program the temperature according to the work requirements.



COPYING DEVICES. Wide diameter copying devices situated at the edge of the panel survey imperfections on the panel and assure perfectly finished corners.

MAIN OPTIONS



PVC STRIP MAGAZINE.

Permits application of veneered strips, + reels of PVC or other plastic material. Both models of edge banders, B4L/B5L offer as standard equipment a feed unit for solid wood strips



TWO INDEPENDENT END CUTTING UNITS. Available in two versions: standard: for thicknesses from 0.4 to 13 mm; optional: for thicknesses from 0.4 to 25 mm with 0.7 HP motor (B4L/B5L).

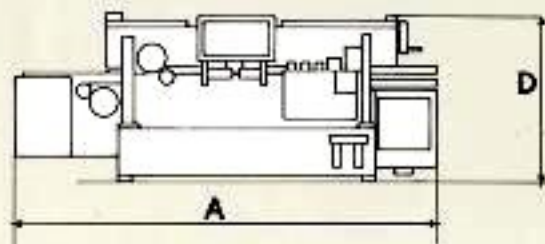


EDGE TRIMMERS.

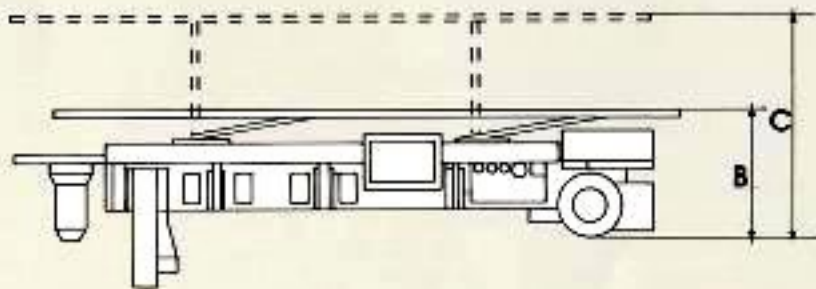
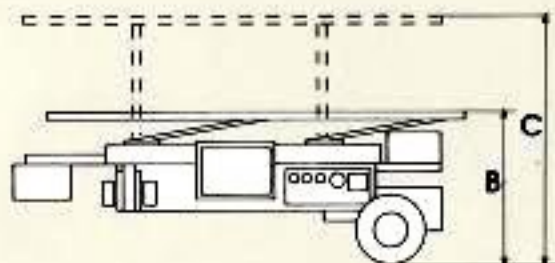
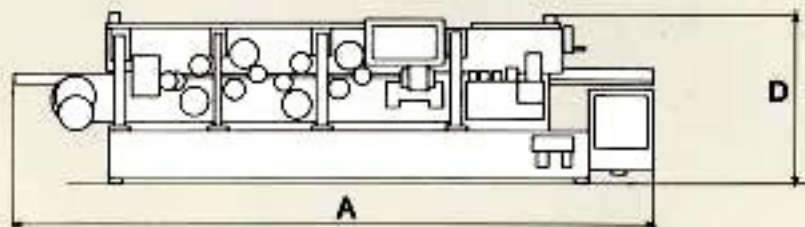
Tilting up to 45° recommended for the perfect edge finish (B5L).

OVERALL DIMENSIONS

B4L



B5L



	A	B	C	D
B4L	3660	870	1650	1260
B5L	5200	870	1650	1260

B4L/B5L TECHNICAL SPECIFICATIONS - STANDARD EQUIPMENT

Panel thickness	10 ÷ 60 mm
Banding material thickness (standard)	0.4 ÷ 13 mm
Max. material thickness (optional)	0.4 ÷ 25 mm
Min. working width:	
for strips or reeled materials (at least 25 cm. long)	70 mm
for solid wood banding (at least 25 cm. long)	110 mm
Minimum working length for reeled material at 10 m/min	100 mm
Feed speed	10 – 15 m/min
Minimum distance between two successive panels with 10 m/min. feed speed	270 mm
Minimum distance between two successive panels with 15 m/min. feed speed	410 mm
End cutting unit:	
Rotation speed	8.500 rpm
Motors horsepower	0.33 kW (0.45 HP)
Max. blades diameter	170 mm
Tilting from	0° ÷ 15°
Edge trimming unit:	
Rotation speed	9000 rpm
Motors horsepower	1.5 kW (2 HP)
Dimensions of cutting tools	70x20 mm or 70x30 mm
Tilting from	0° ÷ 45°
Working pressure of pneumatic system	6 Bar.
Net weight (B4L)	1085 Kg.
Net weight (B5L) with 5 units	approx. 1650 Kg.
Seaworthy packing case (B4L)	3700x920x1560 mm
Seaworthy packing case (B5L)	5270x975x1600 mm
Centralized suction hood attachment	Ø 200 mm

B5L TECHNICAL SPECIFICATIONS - OPTIONALS

Bevelling group	
rotation speed	9.000 rpm
motors horsepower	0.37 kW (0.5 HP)
dimensions of cutting tools	70x20 mm
tilting from	0° ÷ 45°
Sanding group	
motor horsepower	1.1 kW (1.5 HP)
tilting of belt from	0° ÷ 6°
width of sanding belt	75 mm
belt speed	15 m/sec
length of belt	1.900 mm
sanding pad pressure	0:4 Bar
Tilting spindle moulder group	
rotation speed	12.000 rpm
motor horsepower	2.2 kW (3 HP)
tilting from	0° ÷ 90°
max diameter of cutter	100 mm
max diameter of blades	125 mm
spindle diameter	25 mm
Tilting spindle moulder group with aut. timing device	
rotation speed	12.000 rpm
motor horsepower	2.2 kW (3 HP)
tilting from	0° ÷ 90°
max. diameter of cutter	100 mm
max. diameter of blade	125 mm
spindle diameter	25 mm
Buffing group	
rotation speed	3.000 rpm
motors horsepower	0.25 kW (0.35 HP)
dimensions of brushes	Ø 150x55x25 mm

TECHNOLOGY AND VERSATILITY



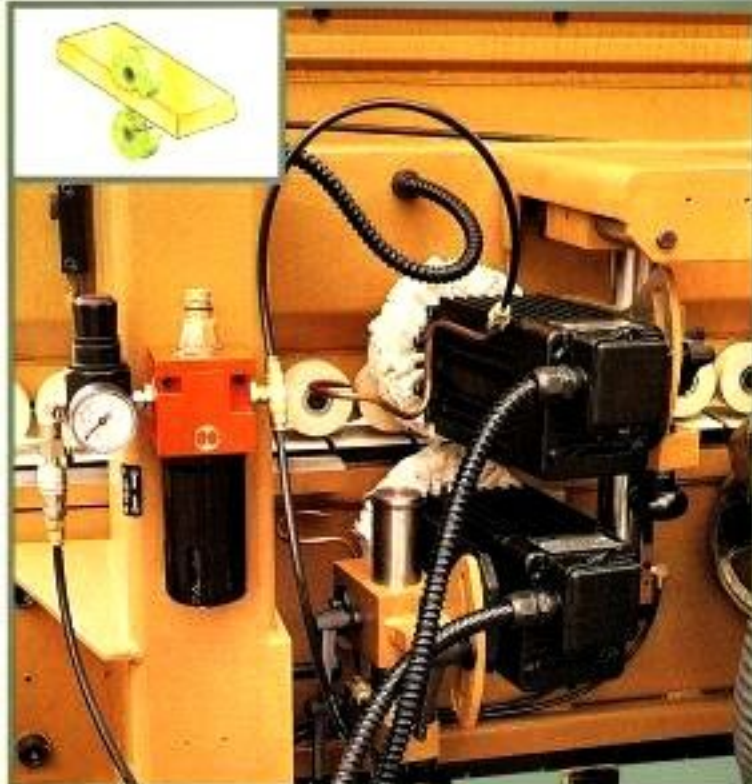
TILTING SPINDLE MOULDER.

Recommended for continuous profiles on solid wood edge banding and on panels (B5L).



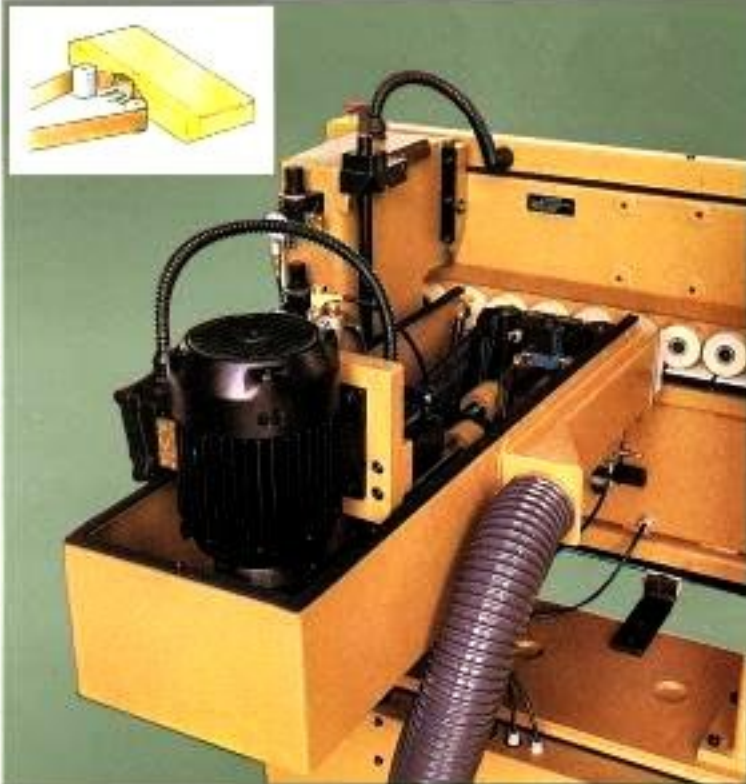
TIMED TILTING SPINDLE MOULDER.

Recommended for profiles on solid wood edge banding and on panels (B5L).



BRUSHING GROUP.

Recommended for removing glue residue between panel and band on plastic material (B5L).



SANDING GROUP.

Recommended for sanding surfaces of veneered and solid wood strips (B5L).