

PRATIX S

The new entry-level machining
centre for Nesting operations



pratix s

THE ENTRY-LEVEL MACHINE FOR NESTING OPERATIONS



WHY CHOOSE THE PRATIX S?
BECAUSE IT IS THE PERFECT MACHINE FOR THOSE WHO WANT
TO BEGIN WITH NESTING MACHINING.

- SIZING OF NESTED PANELS
- BORING-ROUTING OF NESTED PANELS
- GENERIC MACHINING WITH VARIOUS HEADS
- COMPACT OVERALL DIMENSIONS
- ACCESS TO THE WORK TABLE FROM 3 SIDES



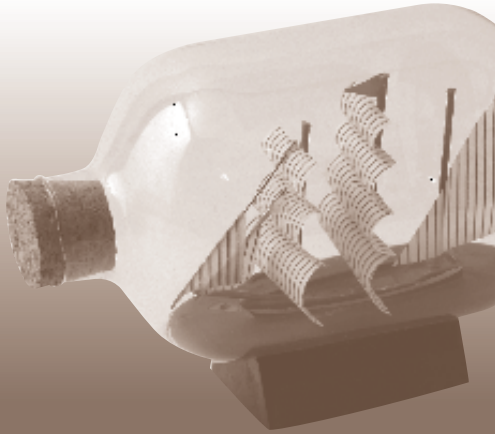
Compact
and safe
"Slim"



Easy-to-use
and cost-effective
"Simple"



Large range
of equipment
"Smart"



- ▶ Wide choice of presets for adding equipment
- ▶ Protections mounted directly on the mobile upright

- ▶ Remote machine control with 7" touch-screen colour display
- ▶ Entry-level machine

- ▶ Wide choice of equipment presets
- ▶ Machines presetting up to 2 vacuum pumps



Compact and safe

THE MOST COMPACT MACHINE AVAILABLE
ON THE MARKET

“Perfect” for workshops with limited space





- ◀▶ Safety protections directly on the head
- ◀▶ Absence of peripheral protections
- ◀ Free access also from the machine's rear side
- ◀▶ Total absence of cables and cable carrier

THE SOLUTIONS THAT MAKE A PRATIX S BECOME...
... A PRATIX "SLIM"



Easy-to-use
and cost-effective

WITH THE UTMOST EASE OF USE
Absolute characteristics necessary for beginners



Working area which can be divided into sub-areas easily by cnc to set up thanks to a simple patented magnetic system.



EASY-TO-USE AND COST-EFFECTIVE...
pratic "SIMPLE"!



Wide windows on both sides of the head make the machine much more reassuring.



Extensive choice of MPS and Modulset suction cups: 90x90, 130x50 130x130 H25 mm.



Ergonomic, easy-to-use with high technology thanks to the remote control with 7" LCD colour display with touch-screen functions, available as a standard feature.



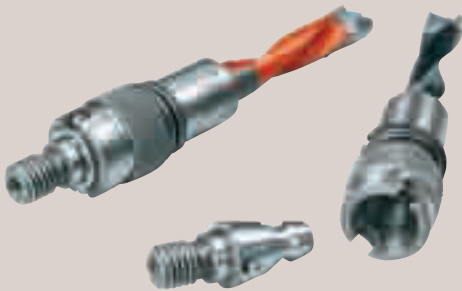
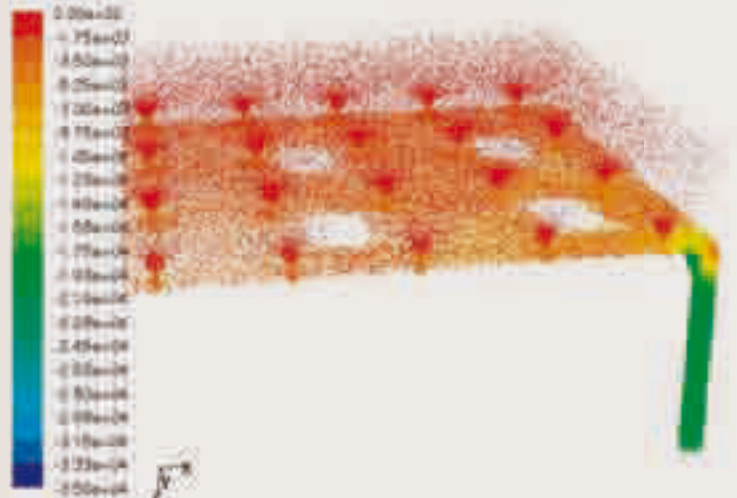
Large range of equipment

THE SCM VISION OF THE MULTIFUNCTION



High efficiency work table: a concentration of technology

- **Strong, easy to use and long-lasting** with an aluminium work table.
- **High performance** work table capable of fully exploiting the vacuum pump capacity.
- Vacuum distribution designed with powerful software for dynamic analysis and capable of controlling the **flow of the air up to 250 km/h.**



Additional flexibility with **fast couplings** which can also be retrofitted, for both vertical and horizontal spindles.

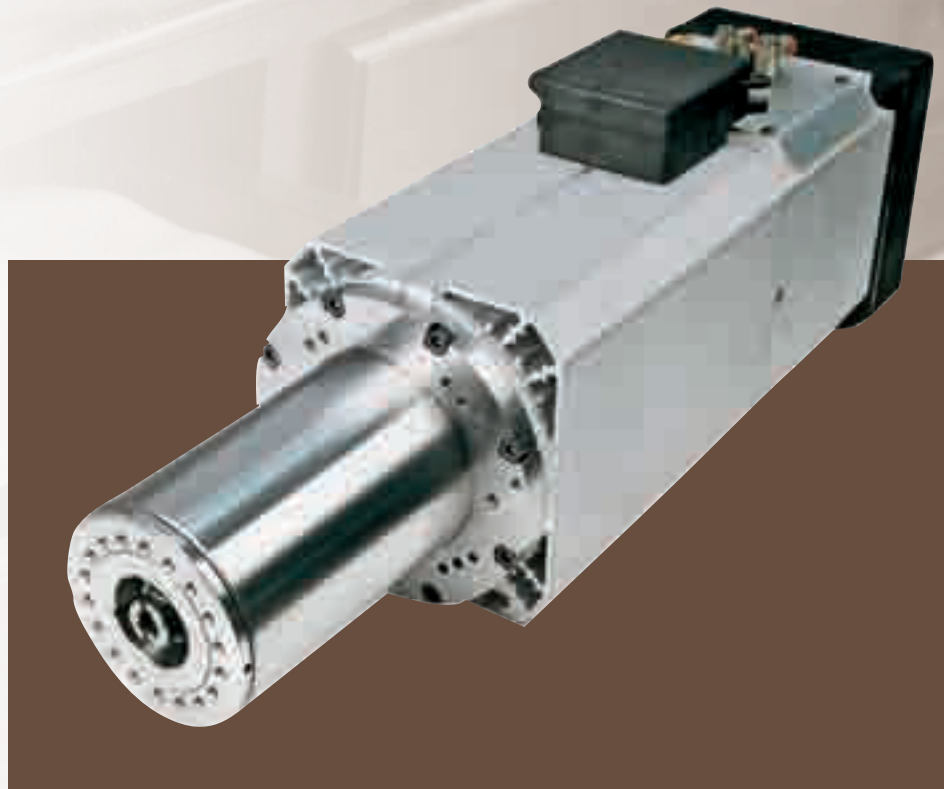


Boring unit with up to 7 independent vertical spindles and 4 horizontal spindles; no. 1 integrated saw blade along "X" direction (120 mm max. diameter).

Extensive customisation is possible with **angular heads having 1, 2 and 4 outlets** with HSK taper couplings for angled boring and cutting.



▶ Electro-spindle with constant motor power (S6) 6,6 kW. Automatic tool change with HSK63F tool taper and preset for heads attachment.

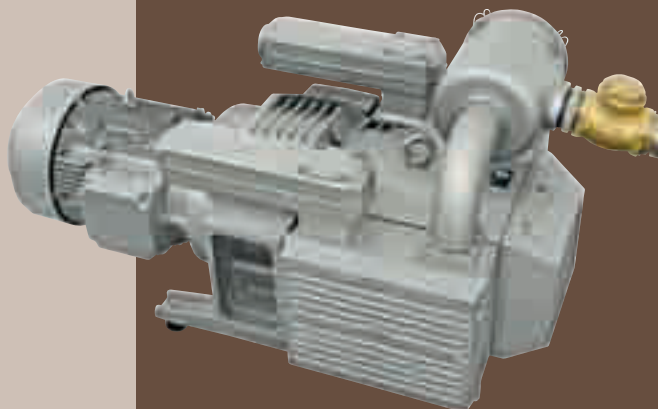


NESTING AS THOUGHT OUT BY SCM... ...pratix "SMART"!

▼ **Centralised lubrication** with manual pump.



▼ Machines presetting for up to 2 vacuum pumps to satisfy any requirement... boring operation too..



▼ **Electrical cabinet** with air conditioning 18°C .



A.C.



NETLINE



PREPARATION

INTERIOR DESIGN

3D DESIGN

- ▶ **xcab** — 3D project of a sequence of cabinets_Definition of the cutting list to be optimised_Boring routing program generation_Extremely easy to use
- ▶ **giotto** — 3D project of a complete room furniture (including under roof)_Rendering _Direct export of the cutting list to be optimised/sized_ Boring routing program generation and hardware management_ Preinstalled, customisable and parametric furniture database
- ▶ **imos** — 3D project of a complete room furniture_Rendering _Direct export of the cutting list to be optimised/sized_Boring routing program generation and hardware management _Automatic generation of product catalogue_Integrable with company management IT system

PROGRAMMING

- ▶ **ultracut** — Panel optimisation_Cutting guide (navigator) for L'invincibile saw
- ▶ **ottimo** — Multi-job optimisation_Costs and times definition_ Material stock management
- ▶ **xylog plus** — Boring and routing schemes programming _Machine functions and barcode management_Shared by all SCM CNC machines
- ▶ **flashnest** — Nesting optimisation_Easy to learn and to use

3 AXIS CNC BORING ROUTING

- ▶ **cyflex** — All boring operations and grooving_Safety enclosure on working unit instead of floor mats_Dust extraction on the base_CNC SCM / Xilog Plus on PC Office
- ▶ **tech** — All boring operations and grooving, Outside profiling and routing_Horizontal group and HSK 63F 11kW (S6) SCM electrospindle with Vector axis_CNC SCM / Xilog Plus on PC Office_Protection Bumpers to optimize alternate work process (no safety mats required)
- ▶ **pratix** — Nesting processing_Vertical boring operation_Outside profiling and routing

PROCESS COMPLETION

CURVED EDGING

- ▶ **olimpic m** — Curved and Straight Panels_Thickness up to 3 mm_Edge height up to 80 mm

OPTIMISE TIME AND RESOURCES!
 SELECT THE SOFTWARE AND SCM
 MACHINES MEETING YOUR INVESTMENT
 AND PRODUCTION CAPACITY AND YOU'LL
 HAVE ALL THE ADVANTAGES OF THE
INTEGRATED PROCESS.

INTEGRATED PRODUCTION

CUTTING

▶ circular saws

Invincible

Post-forming, parallel cutting, angular cutting by means of FULL SUPPORT_Touch screen control and operator's assistance with graphic help_Wireless data transmission between digital readouts of squaring rule stops and full support

▶ sigma

Grooves execution, slots execution device, postforming_Saw carriage up to 135m/min and pusher up to 70 m/min_Automatic detecting system for length, width and panel thickness_Automatic blades locking with selector

▶ pratix

Nesting processing_Vertical boring operation_Outside profiling and routing

STRAIGHT EDGING

▶ olimpic k

Solid wood up to 12 mm, thin edges and ABS up to R 3 mm_Soft/postformed panels_“StarTouch” control system with 12” touch screen display_Pur glue applicable

▶ olimpic s

Solid wood up to 22 mm, thin edges and ABS up to R 3 mm_Soft/postformed panels_Winedge PC control system_Pur glue applicable

CALIBRATING SANDING

▶ sandya

Solid wood calibrating, sanding and finishing_Calibrating of chipboard, m.d.f. and other wooden panels_Veneered panels presanding, sanding and finishing_Logic touch screen electronic programmer for the total machine control

ASSEMBLING

▶ assembla e-p

Manual loading for small lots and customised furniture manufacturing_Open rear structure, with unloading support roller and photocells safety bar_Manual or automatic movements, controlled from 3,8”touch screen

INTEGRATED PROCESS



SOFTWARE PARTNER

AVAILABLE SOFTWARE

▼ GIOTTO



EFFICIENCY, QUALITY IMAGE

Advanced cabinet software for furnishing complete interiors, with data flow management from presentation to assembly.

Specifications:

- ▶ highly effective 3D presentation
- ▶ generation of customised labels and printouts
- ▶ hardware and Netline cell management
- ▶ wide range of parametric standard models for developing complete interiors

▼ IMOS AG



FURNITURE: FROM DESIGN TO PRODUCTION

Top of the range cabinet software for furnishing, without limits of use, with data flow management from presentation to assembly.

Specifications:

- ▶ creation of sales documents and calculation of production costs
- ▶ construction irrespective of dimensions
- ▶ dimensioning for an individual work piece, section or exploded diagrams
- ▶ creation of lists of work pieces and generation of CNC programs
- ▶ designs displayed in high quality photo-realism format

▼ ARTCAM



CREATIVITY AND FLEXIBILITY

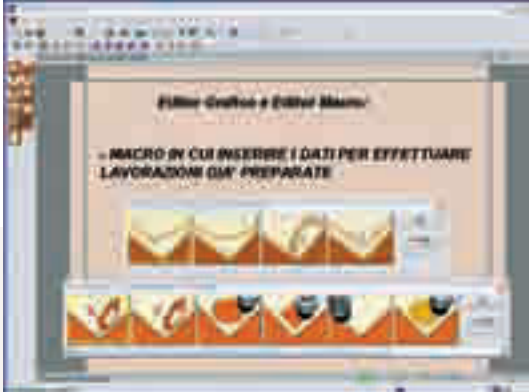
Simple, intuitive 3D artistic Cad/Cam with vector-based modeling.

Specifications:

- ▶ 2D editing and 3D modeling
- ▶ 3D clipart library
- ▶ construction of highly complex shapes

SCM SOFTWARE

▶ XILOG PLUS



PROCESSING POWER AND USER-FRIENDLINESS

Typical woodworking and industrial machining, translated into simple, intuitive application software.

Specifications:

- ▶ machine and tool configuration with an easy to understand intuitive screen page
- ▶ direct importing of dxf and xtl files, parametric program macro programming
- ▶ linear and circular interpolation in the three planes "X", "Y" and "Z"

▶ X-CAB



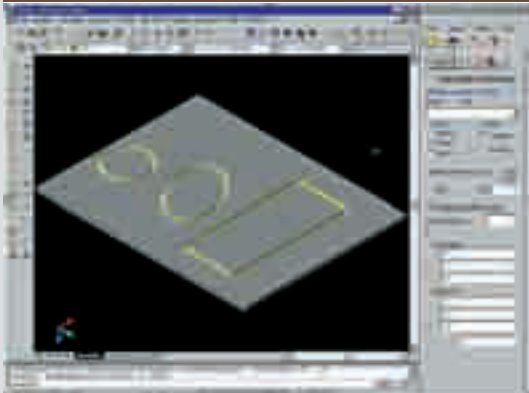
PARAMETRIC PROGRAMMING

Simple, intuitive parametric programming of furniture modules.

Specifications:

- ▶ programming of component dimensions and machining
- ▶ generation of machining centre programs
- ▶ choice of materials and edging materials
- ▶ work piece graphics
- ▶ cutting list creation
- ▶ work piece labeling data

▶ GENIO



CAD CAM WITH ALL THE POWER OF INTEGRATED AUTOCAD

Specifications:

- ▶ entire machine configuration with tooling files, integrated macros managed using excel files
- ▶ tool and suction cup data programming
- ▶ 3D display, simulation of all programmed machining and nesting mode management
- ▶ Cad environment with more than 120 commands

▶ ASPAN



CAD CAM WITH EVERYBODY'S REACH

Specifications:

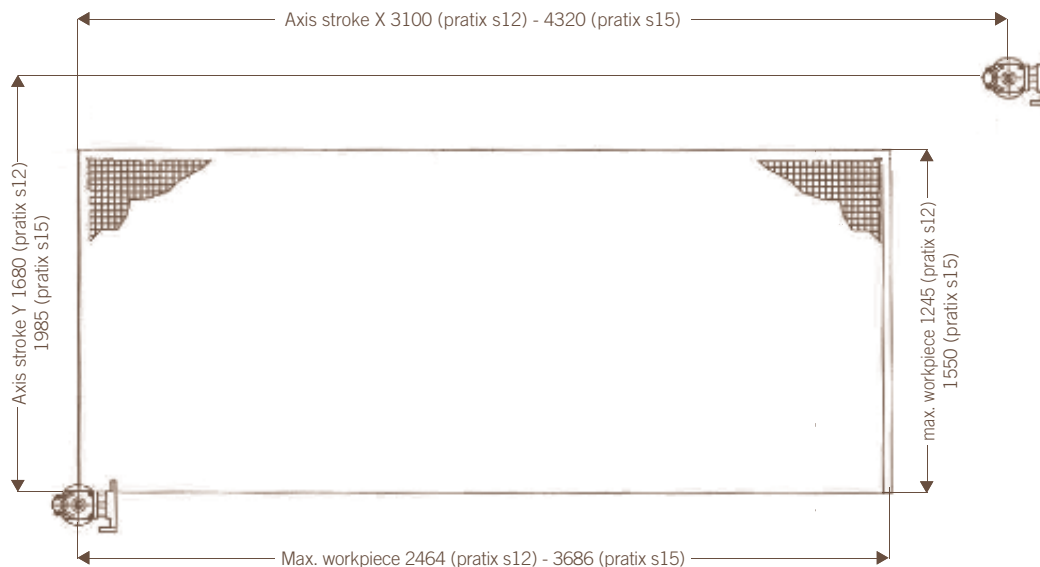
- ▶ simple 3D generic Cad/Cam, no need for any knowledge of Cad
- ▶ doors and cupboard doors managed using customisable models
- ▶ import and export dxf format files
- ▶ Cad environment with more than 120 commands

		pratix s12	pratix s15
AXES			
Working area along X-Y-Z* axes	mm	2480-1250-100	3686-1555-100
Stroke along X-Y-Z axes	mm	3035-1745-240	4320-1985-240
Vectorial speed X-Y axes	m/min	35	
WORKING TABLE			
Type	Multifunction, aluminium		
No. of stops for A area	no.3		no.3
BORING HEAD			
Vertical spindles	no. rpm	7 (5X-3Y) – 4.000	
Horizontal spindles (opt)	no. rpm	4 (2X-2Y) – 4.000	
Integrated blade in X axis (opt)	Ømm - rpm	120 - 6000	
Motor power	kW (Hp)	2,2(3)	
ELECTROSPINDLE			
Std. motor power (S6)	kW (Hp)	5,5(7,5)	
Max. speed.	rpm	24000	
Side tool changer	8 places		10 places
INSTALLATION			
Installed motor power	23÷28,5		
Compressed air consumption	nl/min	400	
Extraction air consumption	m3/hr	5300	
Exhaust air speed	m/sec	30	
Exhaust outlet diameter (electrospindle-borer)	mm	250**	
Total machine weight	Kg	1800	2200

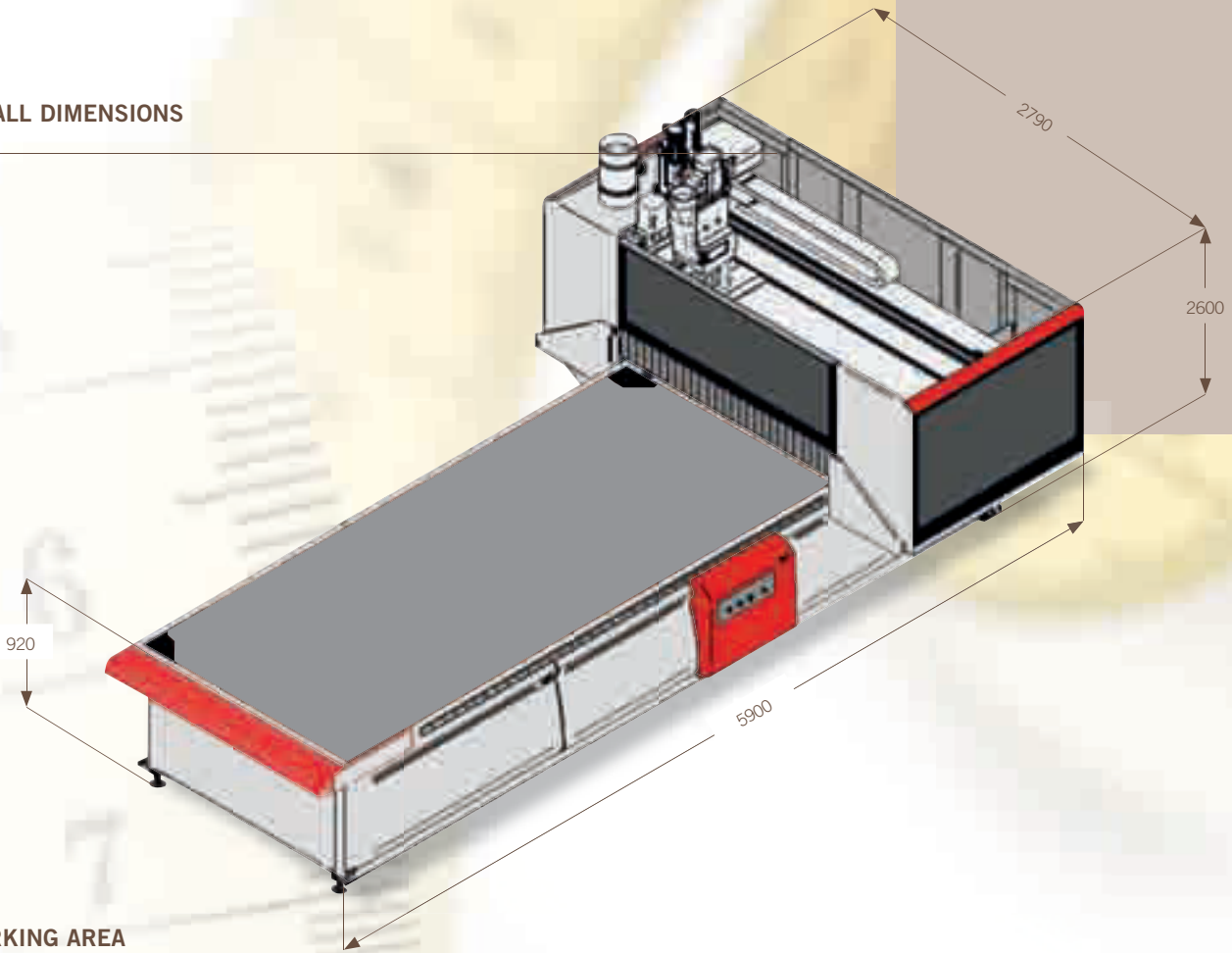
* X distance between stops – Y max. panel width – Z workpiece thickness to be processed with all tools

** only electrospindle: 200mm diameter; 3.400 m3/h extraction air consumption

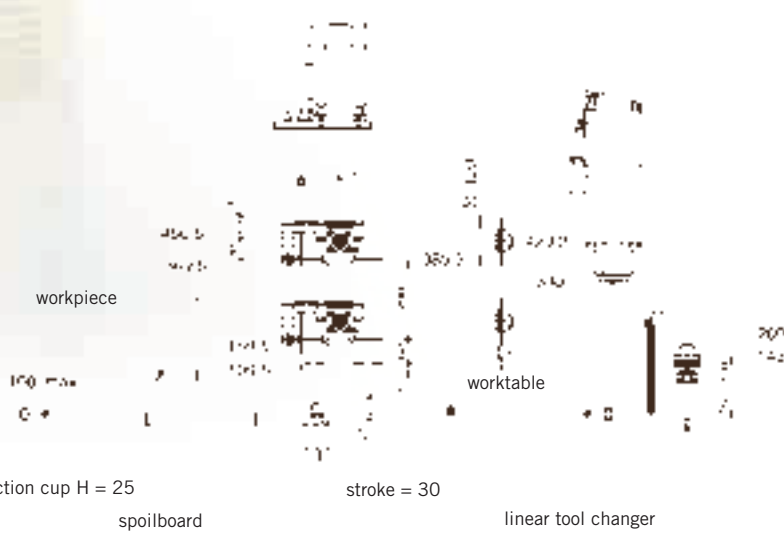
X Y WORKING AREA



OVERALL DIMENSIONS



Z WORKING AREA



NOISE LEVEL

Operating conditions: BORING - ROUTING reference standard: EN 848-3:2007+A2:2009

	Reference standard	Uncertainty factor K	Boring		Routing	
			VSA	LAV	VSA	LAV
Lop: noise level at operator position - dB (A)	EN ISO 11202:1997	4	80,2	83	72,8	87,2
Lw: emitted noise level dB (A) re 1pw	EN ISO 3746:1995		97,6	101,2	91,4	107,5

The maximum instantaneous noise level is under 130dB (C)

VSA: No machining without dust extractor equipment

LAV: machining



Rev. n. 00 - 05/2011 - Acanto comunicazione - AD LifeInPixel - Mail Boxes Etc. Pesaro



SCM GROUP spa - SCM - Via Casale, 450 - 47826 Villa Verucchio (RN) - Italy
Tel. +39/0541/674111 - Fax +39/0541/674274 - www.scmgroup.com - scm@scmgroup.com

www.hoechsmann.com