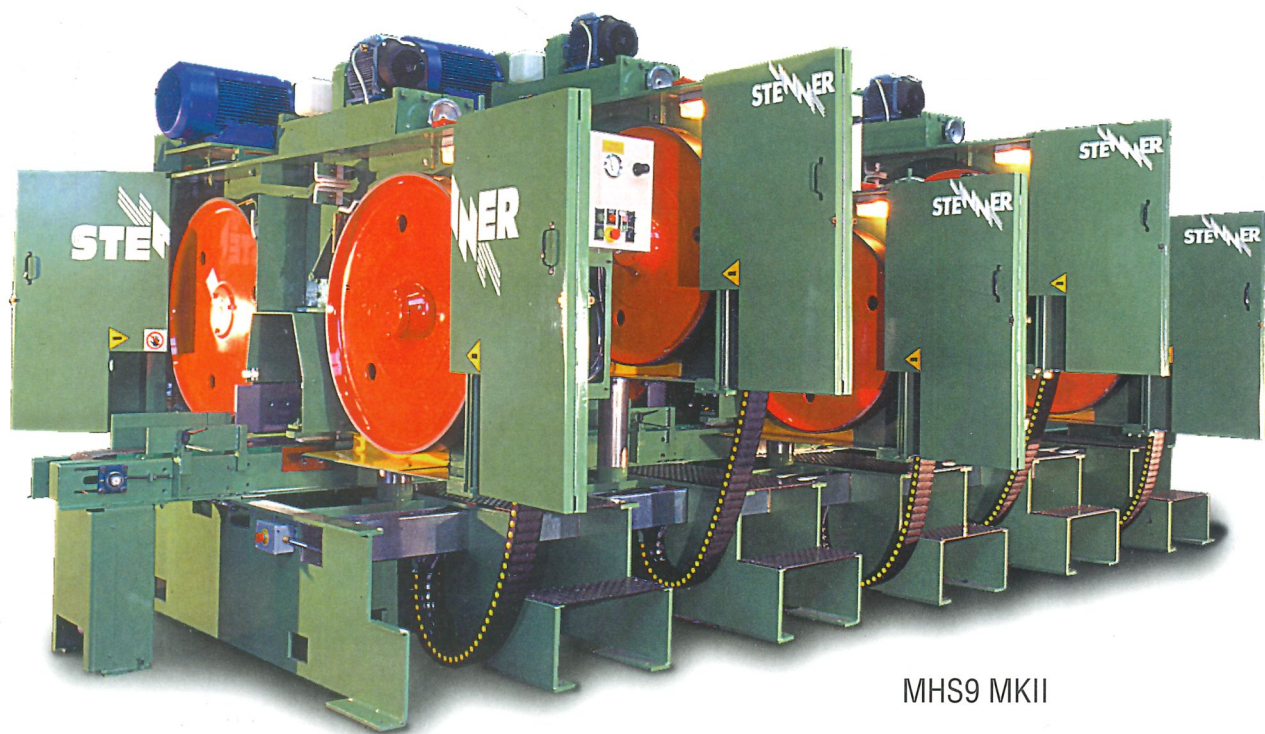
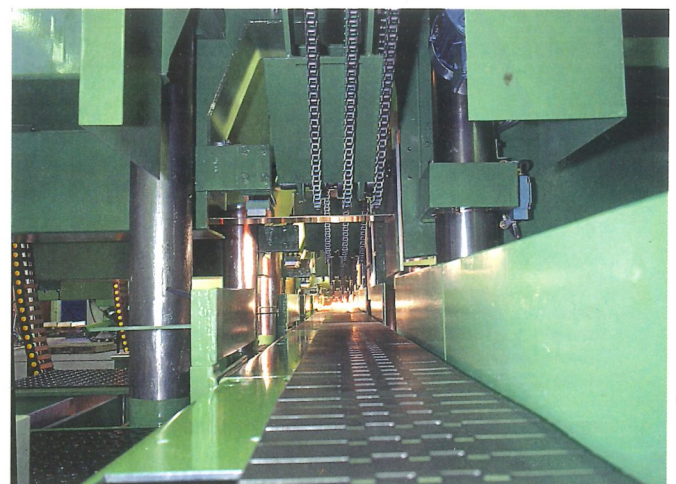


STENNER[®]

Multi-head Horizontal Resaw



MHS9 MKII



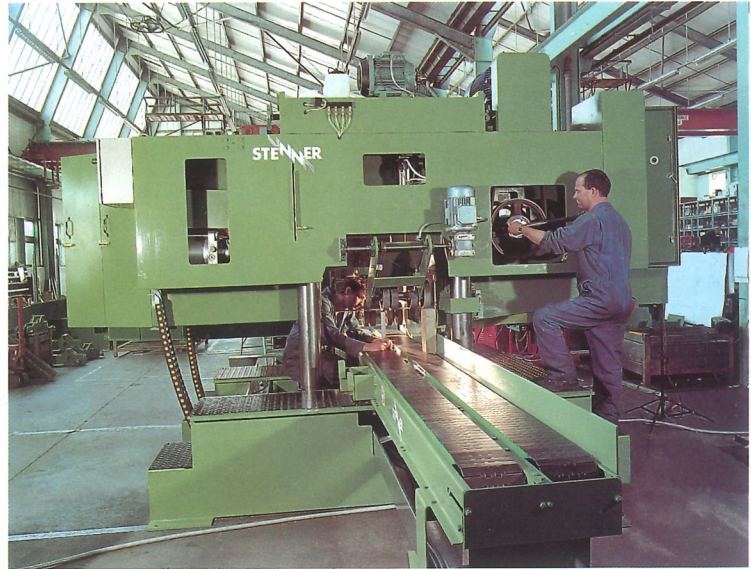
MHS9 & MHS10 MKII

MHS9 & MHS10 MKII

The MHS9 and MHS10 Stenner Multi-Head Horizontal Resaws are now in their second generation. Whilst retaining the theme of modular design combined with Stenner's world renowned sawing technology the MkII machines incorporate a number of improved features.

Available with either 915mm pulleys (MHS9) or 1050mm pulleys (MHS10) and the established features including stepless variation of feed speed, powerful feed gear having the characteristics of a true Radial Arm, pressure sawguides, heavy steel fabrication and ducted sawdust extraction. The MkII machines have the additional benefits of twin chain overhead feed system offering excellent control of differing depth feed stock, horizontal folding doors providing a high level of noise and sawdust containment, pneumatic saw straining and digital readout of saw position on each saw unit. Plus the options of remachineable sawguides and a twin chain bed feed system providing full support of timber over full 705mm bed width.

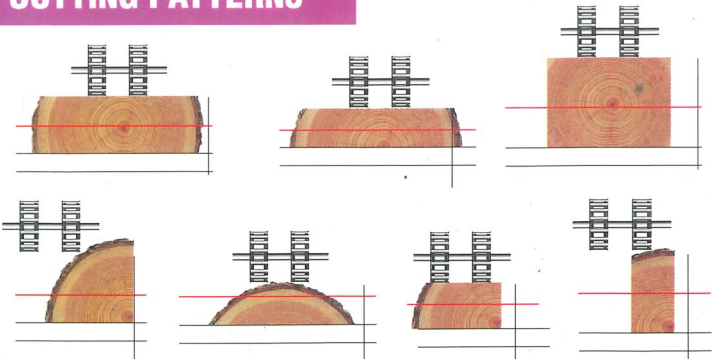
Additionally the MHS9 and MHS10 are now available with a fully programmable networks with the heads setting sequentially as timber passes through, thus maximising throughput when undertaking varying cutting programmes.



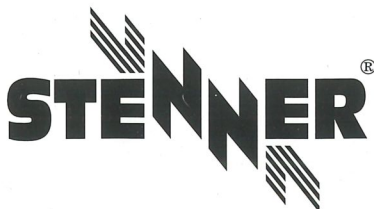
MHS10 MKII



CUTTING PATTERNS



Stenner has a company policy of continuous improvement and development, specifications are subject to change without notice. The company accepts no responsibility for discrepancies in specifications or illustrations contained in its publications.



Stenner Limited Sawmilling Machinery Manufacturers

Blundells Road • Tiverton • Devon • EX16 4JX United Kingdom

Tel (44) (0) 1884 255 700 Fax (44) (0) 1884 257 794

stenner@stenner.co.uk