

OptiCut 200 Performance Series

**Cross cutting to the point:
everything you need for performance-orientated
cutting**



The new DIMTER Performance Series: the great new concept for economic cross-cutting

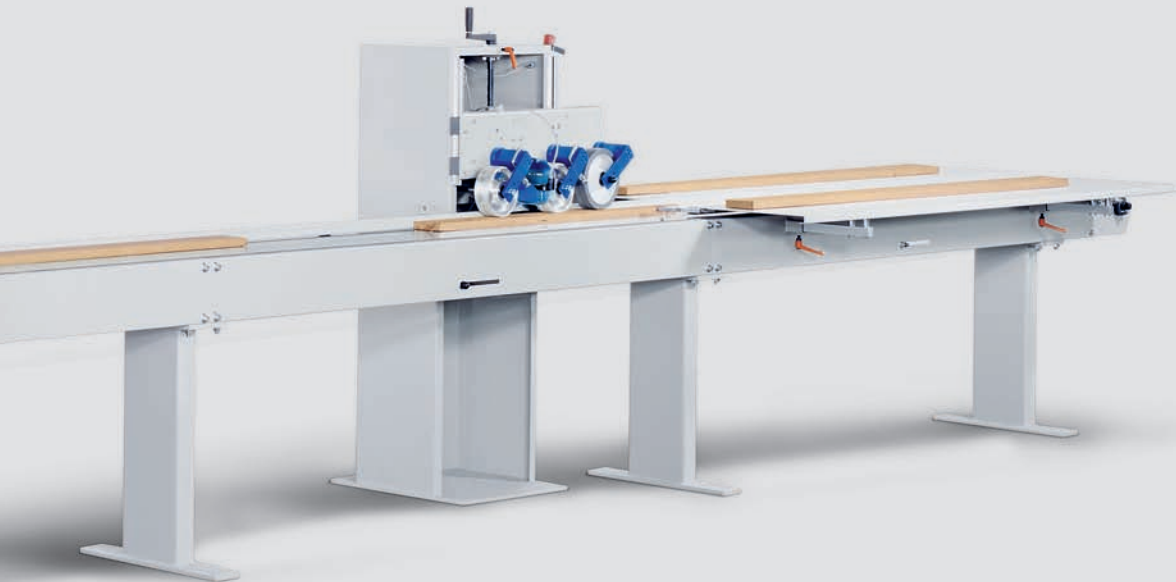
Consistently high daily rates and ultra-simple operation are the hallmarks of the Performance series. Both the universal OptiCut 200, the higher-powered OptiCut 200 Elite and the top-precision OptiCut 200 Exact offer fully optimised features as standard. The linear measurement of the entire workpiece is performed before the first saw cut irrespective of drive and slip. This maximises waste reduction and value creation. That way the OptiCut pays for itself in next to no time.





Fixed length cutting
Defect cutting
Optimisation

Minimal moving masses and an intelligent drive system ensure optimal dynamics. DIMTER produces the latest computer technology and software in-house. All OptiCut 200 models of the Performance series can be operated very simply via the OptiCom terminal. Simply create a cutting list and away you go! Operating reliability is guaranteed even in extreme conditions. What's more: DIMTER customers benefit from the comprehensive service of an experienced manufacturer and the security of the world-wide WEINIG GROUP.



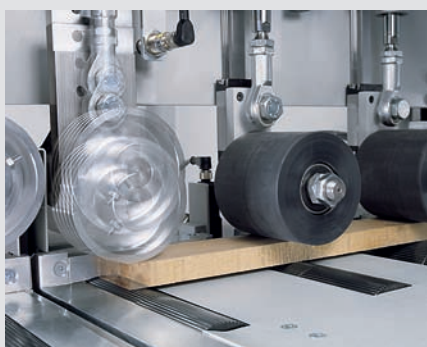
DIMTER OptiCut 200 – a cut above the rest!

- Consistently high continuous output
- Non slip-dependent linear measurement
- Exact lengths free from defects
- Full optimisation for maximum yields – up to 8 quality categories
- Easily exchangeable feed rollers
- Wide drive rollers for secure workpiece transportation
- Individually controlled pressure rollers for reduced wear and greater precision
- Optimal automatic sorting
- Effective waste disposal, e.g. with patented waste gate
- Numerous options, many retrofittable
- Convenient scanner integration
- Automation potential (e.g. system solutions)



DIMTER gives you more value for money: maximum profit thanks to intelligent cross-cutting

Profitable length cutting is guaranteed with the high-precision OptiCut Performance Series. In order to maximise value creation, the OptiCut 200 optimising cross-cut saws not only cut out defects but also calculate the best possible length combination from the available fixed lengths in the cutting list. That way a maximum yield and/or material value is always achieved. Finger joint lengths are fully integrated in the optimisation process and wood can be assigned to up to 8 different quality categories. The wood is simply marked and placed in the feeding device of the machine. This task is greatly simplified by the horizontal linear guide. Fully automatic detection systems (scanners) can of course also be integrated into the cutting line.



Dynamic feed, Precise positioning, High-speed cutting

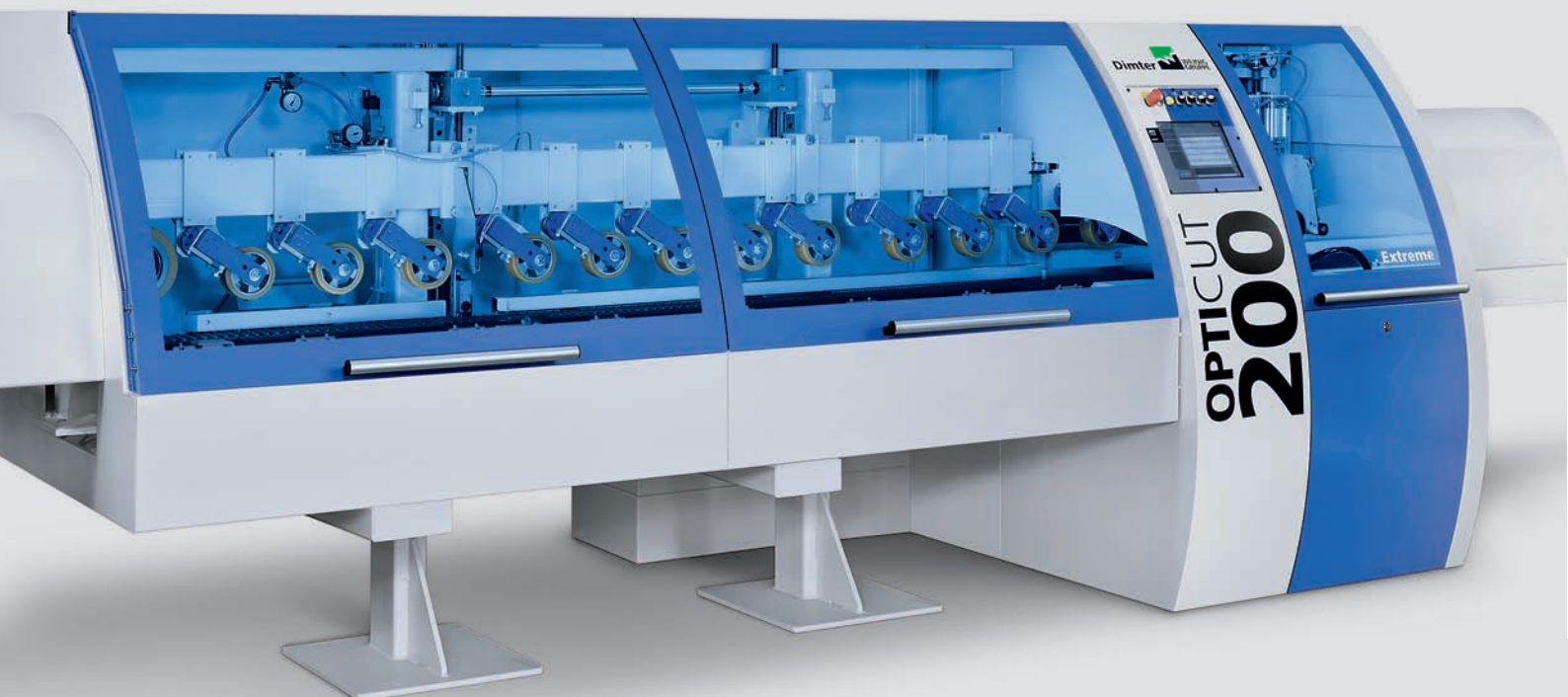
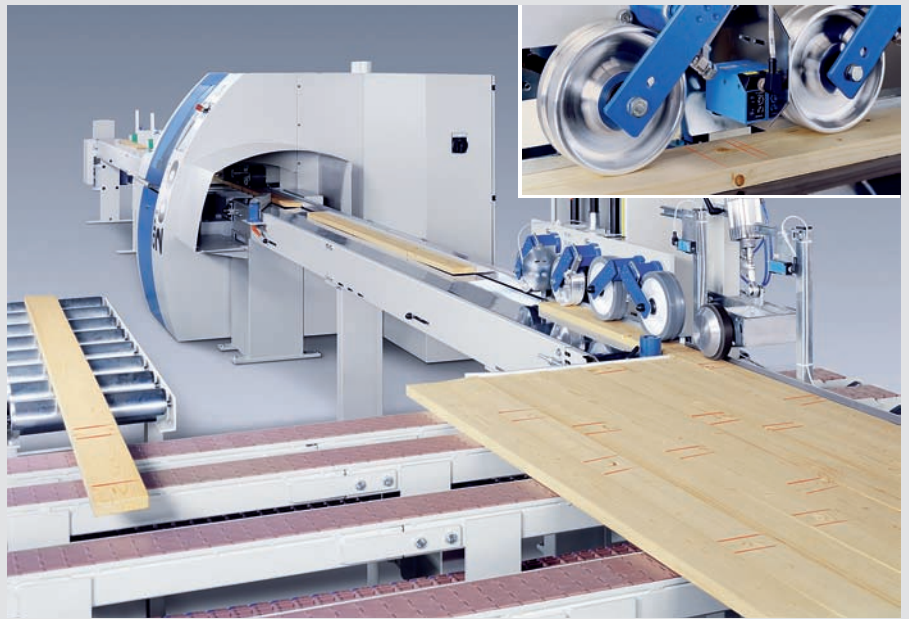
The wide feed rollers grip the wood securely. The rollers are embedded deep in the table to prevent short lengths from tilting and so ensure a straight, exact cut. Individually controlled pressure rollers lowered from above generate the necessary counter-pressure for extremely rapid and precise positioning without performance-reducing corrections.

The pressure rollers are not lowered until after the beginning of the board, resulting in reduced vibration and wear. Powerful drive units guarantee a high continuous output. The rapid saw stroke ensures a high daily throughput of wood.



DIMTER OptiCut 200 and 200 Elite: strong performance thanks to intelligent solutions

The secret of the OptiCut Performance Series lies in maintaining constant accuracy at high speeds. Non drive-dependent measuring wheels only measure when the wood is in motion. This means that uncontrolled slip or belt stretch in the feed system do not distort the measuring result, so that the machine cuts exactly in the intended place. This avoids defects in the quality wood and guarantees exact fixed lengths irrespective of the wood quality. Commercially available conveyor belts reduce the running costs of these all-round economic machines.



DIMTER OptiCut 200 Exact: the number-one choice for top precision

When it comes to maximising linear precision, you can't do better than the OptiCut 200 Exact. Its special measuring technique allows accuracies of up to ± 0.5 mm for up to 8 preferred lengths. Thanks to an intelligent saw blade control system, tear-out can be reduced and a top-quality cut surface obtained. In order to maximise the angularity of the cut, an active lateral pressure can also be applied which presses the work-piece additionally against the continuous fence. This results in top precision and in many cases eliminates the need for an additional machining step.

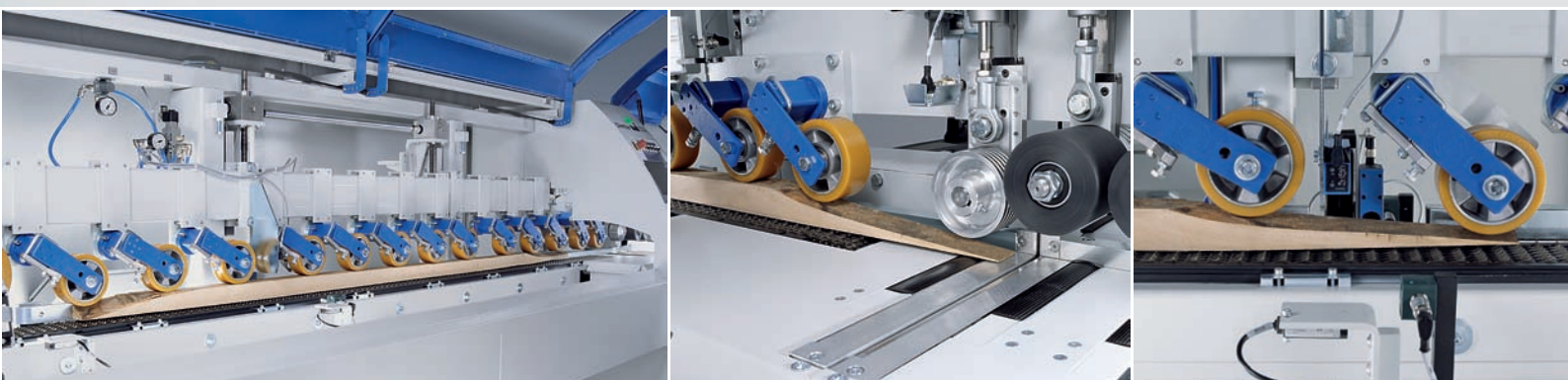


DIMTER OptiCut 200 Extreme: the powerpack for top performance

For demanding or rough wood qualities, there is the OptiCut 200 Extreme. A robust chain feed ensures secure transport of even tapering or highly irregular workpieces. A special measuring system reliably records the entire wood length,

so that even under-sized parts can be handled in a controlled manner in the saw. The chain conveyor guarantees a high level of dimensional accuracy by preventing the workpiece from slipping during transportation. The measuring

wheel in the saw ensures exact cutting of the quality wood irrespective of slip. Thanks to powerful motors, extremely high daily rates can be achieved.





The OptiCut optimisation function: more profit and greater transparency

OptiCut cross-cut saws can be controlled via the intuitive OptiCom Direct touchscreen. This software helps you get the most out of the material and so maximise your profits. This advanced solution can be integrated in company networks and keeps production statistics for greater transparency in wood purchasing and production output.

Further advantages:

- Secure operation without hard disk
- Secure storage on flash card
- Direct printer connection
- Can be directly integrated in Ethernet networks
- Convenient generation of cutting lists and statistical evaluations in the office
- Ideal solution for networking management and production
- Possibility of integration into sector solutions

Fixed length cutting, defect removal, optimisation – optimisation can easily save a good 8 % or more waste. The OptiCut therefore pays for itself in next to no time. The diagram shows the extra profit achieved by an **8 % waste reduction**.



Perfect sorting: fully automatic with the patented waste gate

Clearing the way for accepted lengths! When it comes to sorting high cutting outputs, the effective separation of waste from quality wood is particularly important. The patented DIMTER waste gate offers a reliable solution to this problem for all saws of the Performance Series. The accuracy of the quality wood sorting process increases the production flow of the cutting line.

The patented waste gate

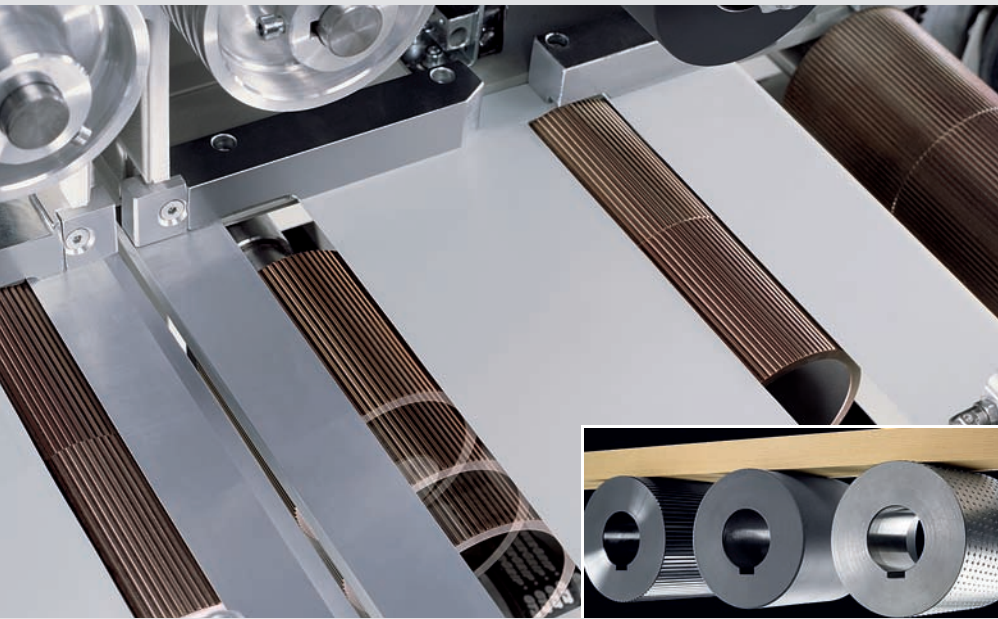
The intelligently controlled waste gate is integrated directly in the saw and is precisely adjusted to the output of the cross-cut saws. This ensures reliable separation of rejects from pieces of quality wood and avoids problems with sorting and further processing. Thanks to the multi-stage system, longer waste parts can also be filtered out directly, thus avoiding performance-reducing additional cuts. The ultimate solution for reliable sorting and troublefree production – all at full saw capacity!

Automatic sorting

The OptiCut cuts at lightning speed. And identifies every cut length. Sorting parts automatically by length, quality etc. from the outset is a logical way of doing things, particularly when it comes to order-based production. That way you simplify your logistics and save on personnel.



Exchangeable feed rollers: top performance with all kinds of wood



Different wood qualities impose different requirements. Thus, the feed rollers of the OptiCut 200 can be changed very quickly in order to respond to the respective requirements. Rough and planed qualities can now be readily processed in the same shift, and resin-coated rollers are easily cleaned for consistently high performance in every shift.

OptiCut with intelligent saw blade control: clean cut and minimal tear-out

Servo-motor drive of the saw stroke is optionally available. Due to the controlled exit of the saw blade from the workpiece the tear-out is reduced to a minimum. The other cutting phases on the other hand are performance-optimised. Waste or grades in which tear-out is less of a problem can be cut at maximum speed.



OptiCut with VarioSpeed: continuous cross-cutting thanks to non-stop feed



Why pay out for more saws than you need? The OptiCut offers enormous performance potential right across the board. To exploit this capacity to the full, the intelligently controlled VarioSpeed reduces the distances between the workpieces as much as possible. That way the OptiCut is supplied continuously with wood, making the system even more economic.

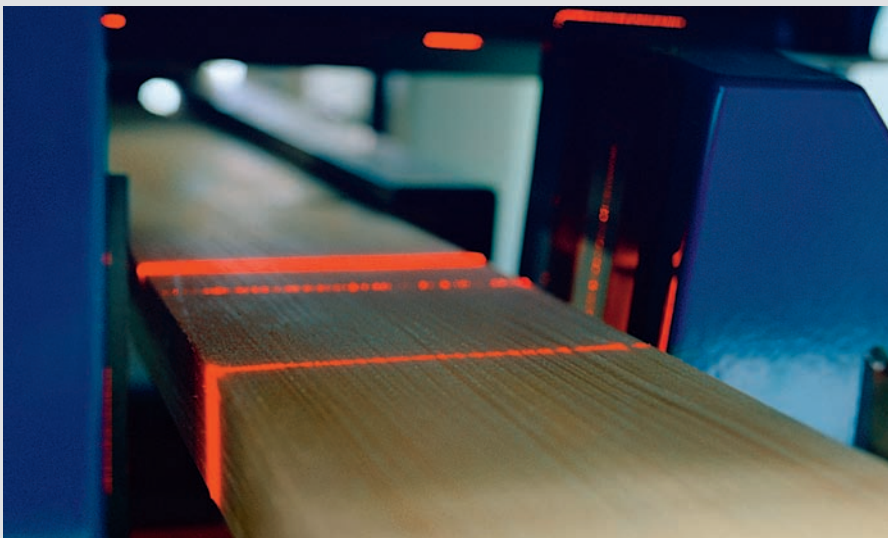
OptiCut with identification technology: clear workpiece identification



Easy handling of the sawn timber, warehouse identification, order-based assignment, product-based logistics – in all these cases, the identification of the cut lengths has an important role to play. Thus, a clearer overview, lower costs or in general the use of cost-optimised production processes are made possible. Number or code labelling is performed directly on the workpiece, from the side or above.

DIMTER Performance cutting lines: forward-looking solutions with top potential

DIMTER OptiCut cutting lines are built on modular principles, thus ensuring that you are well equipped for the future. With the relevant upgrades, you can ensure a rapid response to changing market requirements. Useful add-ons in this connection are mechanised feed systems, scanner systems or also the stacking device OptiCut Stacker.



Scanner systems detect fully automatically and at lightning speed relevant workpiece characteristics such as branches, cracks and structural patterns, and supply up to 4 OptiCut high-speed saws with cutting data via intelligent mechanisms while maintaining full production speed.



The **OptiCut Stacker** is the ideal solution for the production of preferred lengths. These are stacked fully automatically to a stacking height of 1200 mm and at a rate of up to 80 parts/min. Different stacking patterns can be selected in the saw control system.

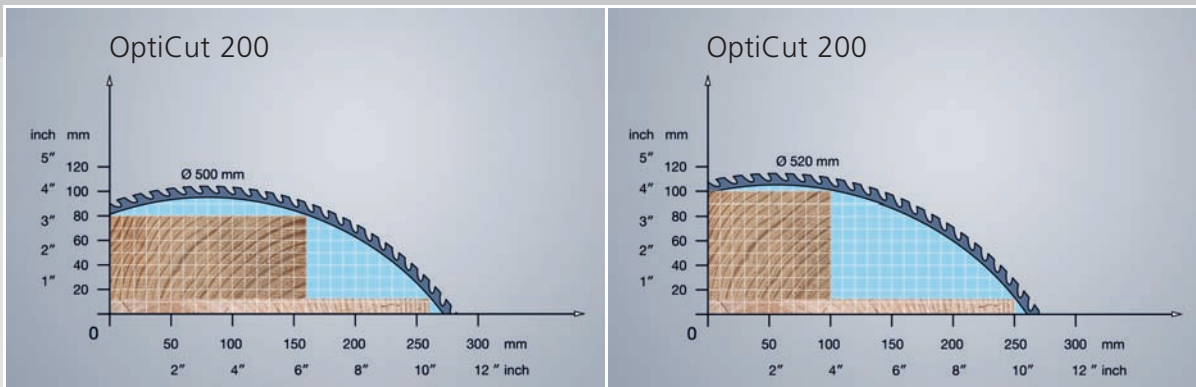


Table OptiCut 200: standards and options

Attention! Bend and differing wood dimensions have to be taken into account when determining a possible wood cross section. The nominal values in our technical data apply here.

The matrix shows the main distinctive features of the different models. Your DIMTER expert will gladly provide you with further details in consideration of your individual requirements.

The figures provided are standard values for guidance only. Please ask us if you have other requirements. Different values may apply to different versions. () = optional.

| Technical data: | OptiCut 200 Performance Series | | |
|--|---|---------------|-------------|
| | OptiCut 200 | Elite / Exact | Extreme |
| Min. nominal cross section | 30 x 12 mm | | |
| Max. cutting range* | 260 x 12 mm (250 x 12 mm) 160 x 80 mm (100 x 100 mm) | | |
| Max. ingoing lengths | 6.3 m | | |
| Max. feed speed . | 180 – 240 m/min | | |
| Cutting accuracy up to 1 m cutting length | ± 0.8 mm (model Exact ± 0.5 mm) | | |
| Cutting accuracy up to 2.5 m cutting length | ± 1.5 mm (model Exact ± 0.5 mm) | | |
| Minimum cutting length / at end of workpiece | 140 mm / 140 mm | | |
| *Larger cutting ranges on request | | | |
| Equipment: | | | |
| VarioSpeed | — | ● | — |
| Servo saw stroke | — | ○ | ○ |
| Fixed-length cutting | ● | ● | ● |
| Defect removal | ● | ● | ● |
| Full optimisation up to the max. ingoing length: fixed and variable lengths, up to 8 qualities, 16 groups, >100,000 lengths | ● | ● | ● (< 4,5 m) |
| Patented automatic waste gate | ○ | ○ | ○ |
| Automatic sorting | ● | ● | ● |
| Automatic cross feeding | ○ | ○ | ○ |
| Integration in systems | ○ | ○ | ○ |
| Integration of scanner | ○ | ○ | ○ |

Technical changes reserved. The information and illustrations in this brochure also include extras which are not part of the standard package. Protective coverings may have been removed for purposes of photography.

● Standard ○ Option

You can expect a lot from us: WEINIG GROUP – Your partner for the future

You can concentrate on your business, let us do everything else! The WEINIG GROUP is not only the leading manufacturer for the solid wood processing industry, we lead this industry in technology and ideas! WEINIG offers comprehensive services and system solutions – all the way to complete turnkey production plants – making the WEINIG GROUP the all-around ideal partner where the focus is always on flexible, profitable production.



The WEINIG ExpoCenters

In our ExpoCenters we can demonstrate to you how our top technology can benefit your operation. Here you can get a close-up view of all our machines.



Training

We want to ensure you get the maximum benefit from your investment as fast as possible. World-class WEINIG training takes care of that. Effective operator training classes taught by experienced WEINIG experts make sure that the machine will be fully productive within the shortest time frame.



Kaizen

WEINIG's own manufacturing process is successfully organized according to the Kaizen method. In a continuous improvement process, quality and efficiency are increased step by step. You can benefit from this at your plant. We will gladly pass on to you our many years of experience.



Service

With sales and service companies located on all continents and a large, mobile team of service technicians, we guarantee a worldwide standard of service that is unique in the industry. Fastest spare parts delivery everywhere and employees who speak your language are part of our reputation for the finest customer support anywhere.

**WEINIG**

World market leader
for moulders

WACO

No. 1 for high-speed
moulders and planers

GRECON

High-performance finger
jointing lines

DIMTER

Specialist for optimizing
cross-cut saws and gluing
presses

RAIMANN

Top technology for
rip optimization

CONCEPT

Your competent partner
for complete system
solutions

The WEINIG GROUP: We seamlessly combine all components of solid wood processing

Including full turn-key production plants

To build innovative machines is one thing, to offer system solutions is something else. More and more, our customers want the entire factory. That's a case for our team at WEINIG CONCEPT. Here the competence of the WEINIG GROUP combines in a special way. From planning to the turn-key production plant, our professionals handle it all. Worldwide. For you.

A strong team

Every member of the WEINIG GROUP is a leader in their product specialty. This creates valuable synergy that ultimately benefits you and your business.



OptiCut 200 Performance Series

**Production:**

GRECON DIMTER Holzoptimierung
Süd GmbH & Co.KG
Rudolf-Diesel-Strasse 14 – 16
89257 Illertissen
Germany

Phone +49 (0) 73 03 / 15-0
Telefax +49 (0) 73 03 / 15-1 99
E-mail info@dimter-weinig.de
Internet www.weinig.com

Sales:

WEINIG GROUP
Weinigstrasse 2/4
97941 Tauberbischofsheim
Germany

Phone +49 (0) 93 41 / 86-0
Telefax +49 (0) 93 41 / 70 80
E-mail info@weinig.de
Internet www.weinig.com