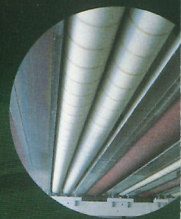
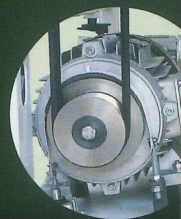


C a l i b r a t i n g s a n d i n g m a c h i n e s



EMC

PIONEER 950
EXPLORER 1100
VENUS 1300
SIMPLEX 650



Standard technical specification

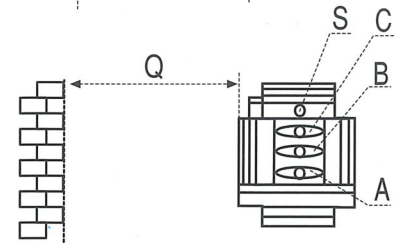
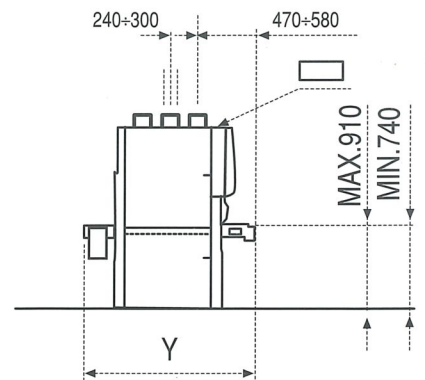
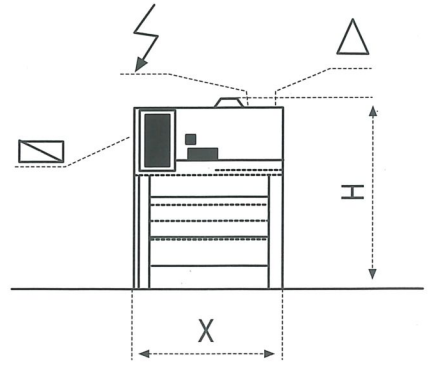
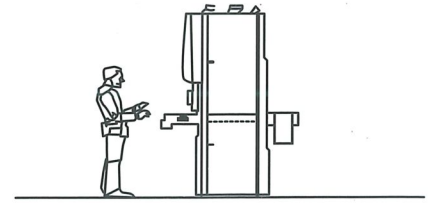
Caratteristiche tecniche versione standard
 Caractéristiques techniques version standard
 Technische Eigenschaften Standard
 Características técnicas standard

		SIMPLEX	PIONEER	EXPLORER	VENUS 2	VENUS 3
Working width	mm	650	950	1100	1300	1300
Larghezza di lavoro						
Arbeitsbreite						
Largeur de travail						
Ancho de trabajo						
Working thickness min-max	mm	3-170	3-170	3-170	3-170	3-170
Spessore di lavoro Min-max						
Durchlaufhöhe Min-max						
Épaisseur de travail Min-max						
Grosor de trabajo Min-max						
Feeding speed	m/min	5-10	5-10	5-10	Variable 3,7-19	Variable 3,7-19
Velocità di avanzamento						
Vorschubgeschwindigkeit						
Vitesse d'avance						
Velocidad de avance						
Abrasive belts dimensions	mm	670 1900	970 1900	1120 1900	1320 1900 (2200)	1320 1900 (2200)
Dimensioni nastri abrasivi						
Schleifbandabmessungen						
Dimensions bandes abrasives						
Dimensiones bandas lijadoras						
Rollers diameter	mm	125	125 130	140 (180)	140 180 (220)	140 180 (220)
Diametro dei rulli						
Durchmesserwalze						
Diamètre des rouleaux						
Diámetro dos rodillos						
Standard main motor power	Kw (HP)	4 (5,5)	7,5 (10)	7,5 (10)	11 (15)	11+11 (15+15)
Motore nastri potenza standard						
Bandmotor standard leistung						
Moteur bandes puissance standard						
Potencia motor lijas standard						
Compressed air pressure	bar	6	6	6	6	6
Aria compressa						
Druckluft						
Air comprimè						
Aire comprimido						
Exhausted air consumption (air speed 22m/sec)	m³/h	890* 1780**	890* 1780**	1400* 2800**	1400* 2800**	1400* 2800** 4200***
Consumo aria aspirata (vel aria 22m/sec)						
Luftverbrauch (22m/sec)						
Air consommé aspiration (vitesse air 22m/sec)						
Consumo de aire aspirado (vel aire 22m/sec)						
Approx. Net weight	kg	820	1220	1580	1930	2350
Peso netto ca.						
Nettogewicht ca.						
Poids net approx.						
Peso neto aprox.						

* 1 belt - 1 nastro - 1 band - 1 bande - 1 banda / ** 2 belts - 2 nastri - 2 bands - 2 bandes - 2 bandas / *** 3 belts - 3 nastri - 3 bands - 3 bandes - 3 bandas

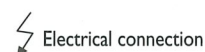


Via Altobelli, 10 - 40026 Imola (BO) Italy
 Tel. +39 0542 688034 - Fax +39 0542 643959
 e-mail: emc@emc-italia.it
 www.emc-italia.it



Dimensions - Dimensioni - Abmessungen				
		X	Y	H
		mm	mm	mm
Simplex 650		1100	1300	2060
Pioneer 950	1K - 1RR	1320	1450	2100
	2RK	1320	1600	2100
Explorer 1100	1K	1480	1420	2150
	2RR - 2RK	1480	1580	2150
Venus 1300 2		1750	1800	2280
Venus 1300 3		1750	2120	2280

Dust hood diam. - Diam. cappe aspirazione Ansaughaube Durchmesser - Diam. hottes d'aspiration Diám. campanas de aspiración						
		A	B	C	S	Q
Simplex 650	mm	120	120			1600
Pioneer 950	mm	120	120			1900
Explorer 1100	mm	150	150		120	2050
Venus 1300/2	mm	150	150		120	2250
Venus 1300/3	mm	150	150	150	120	2250



Electrical connection



Pneumatic connection

EMC reserve the right to change the technical specifications without notice • EMC si riserva il diritto di modificare le specifiche tecniche senza preavviso • EMC Luch das Recht vor, die technischen Eigenschaften ohne Vorankündigung zu verändern. EMC se réserve le droit de modifier les spécifications techniques sans préavis • EMC se reserva el derecho de modificar las características técnicas sin aviso previo.

il digitale 0547.688034