

# Vertical CNC Processing Centers BHX 200 series







## BHX 200 Series – compact, smart, vertical The Result: **YOUR SOLUTION**

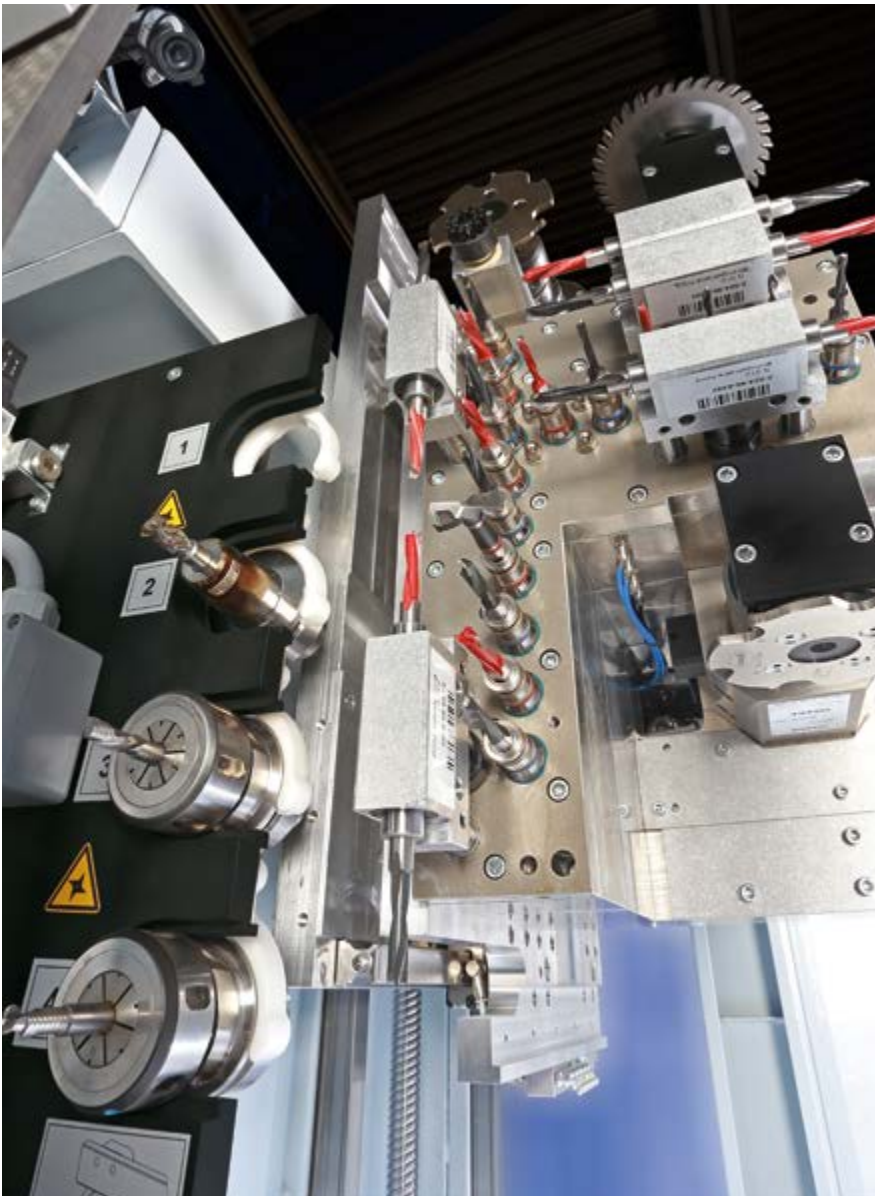
The flexible power pack on less than 10 m<sup>2</sup>: Space-saving due to vertical construction. No setting times due to clamping system. Faster drilling due to powerful drilling equipment. Resource-saving due to no-vacuum clamping technology.

### Contents

- 04 BHX 200
- 05 Equipment Configurations
- 06 Dowel Insertion
- 07 All inclusive – Hardware
- 08 All inclusive – Software
- 09 All inclusive – powerTouch
- 11 Option – Software
- 12 Option – Workpiece return system
- 13 Technical Data
- 14 LifeCycleServices
- 15 ecoPlus advantages



## 25-Spindle Configuration



### STANDARD

- 1 routing motor with 10 kW
- 25 individually activated drilling spindles (15 vertical / 10 horizontal spindles)
- 1 swivelling grooving saw  $\varnothing$  125 mm
- 4-fold tool changer

### OPTION

- 1 disk router 0-90° (e.g. d=100.4 mm for ClamexP) or/and
- additional 3-spindle drill head (e. g. hinge hole processing)



## 36-Spindle Configuration



### STANDARD

- 1 routing motor with 10 kW
- 36 individually activated drilling spindles (20 vertical / 2 x 8 horizontal)
- 1 swivelling grooving saw Ø 125 mm
- 4-fold tool changer

Especially in the case of complex drilling patterns the Split-Head configuration (2 x 18 spindles) provides significant time savings.



## BHX 200/D

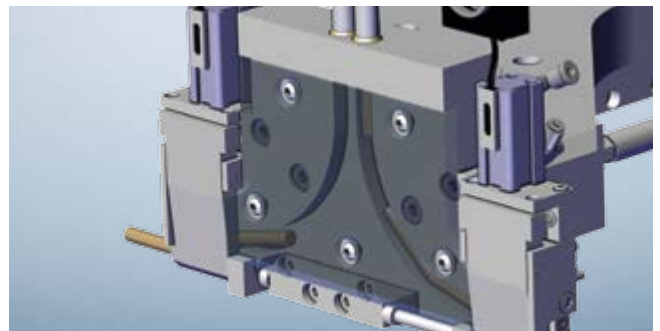
### CHOOSE »D« IF DOWEL INSERTION IS REQUIRED

The »D« type is combined with either one of the two main configurations. It supplements the standard version by the function »Doweling«.



#### »D« like dowelling

- You can also insert dowels with the BHX 200/D, thus achieving greater flexibility of applications



#### Dowel driving unit

- Horizontal dowel insertion by means of powerful aggregate technology
- Exact insertion of dowels into defined positions



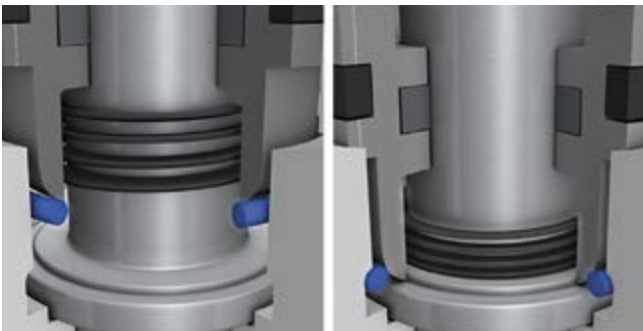
## All inclusive – Hardware

### THE BHX 200 AND BHX 200/D

sprovide you with top-quality equipment right from the beginning. By including elementary technologies already in the standard, highest processing quality is ensured in the long term.

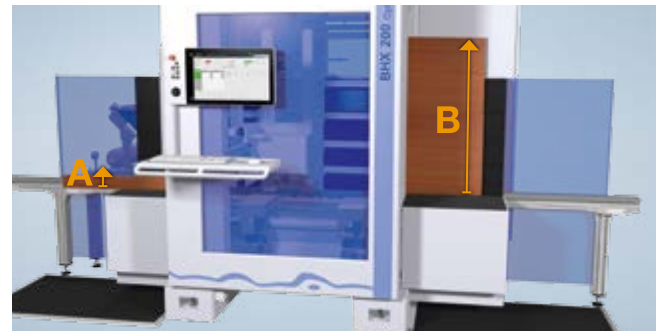
#### powerControl mit powerTouch

- 21,5" Full-HD multitouch display with wide screen 16:9
- Front USB interface
- Ethernet connection 10/100 Mbit



#### Automatic spindle clamping

- Patented system for exact drilling depth at any time with different materials. Lasting assurance of drilling quality.



#### Flexible processing height

- Working height from 50 mm (A) to 1250 mm (B)
- Large working field, more flexibility



#### Drill quick-change system

- The patented system ensures easy installation or change of drilling bits. Your easy way to save time!



#### CNC-controlled clamping system

- No-vacuum fixing and precise positioning of workpieces. You save 100% vacuum power.

# All inclusive – Software

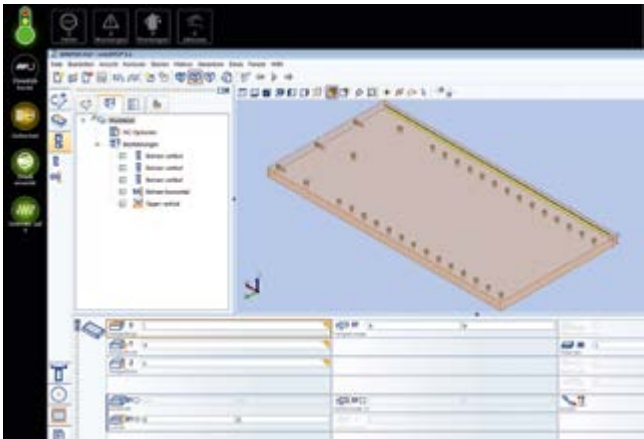
**WITH THIS SOFTWARE PACKAGE YOU ARE »READY TO RACE«.** You will receive one of the most established CNC-programming systems, the woodWOP software, which has proven itself by more than 30.000 installations worldwide.

**Please use our website:**

**Worldwide largest forum for woodWOP:**

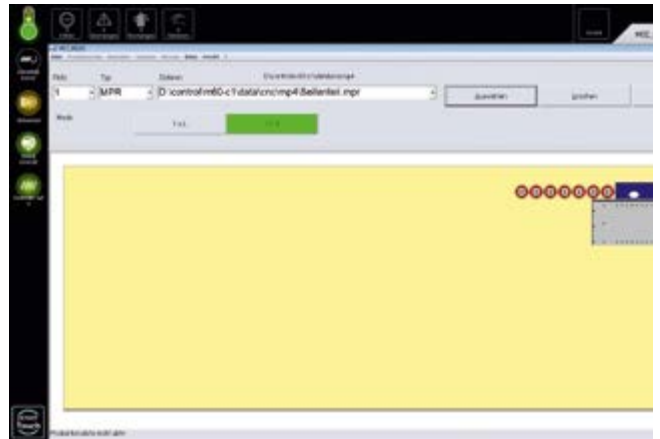
**Free Download of woodWOP-components:**  
[www.homag.com/Produkte/Software](http://www.homag.com/Produkte/Software)





### woodWOP | License „Machine“

- Modern software based on Windows®
- More than 30.000 installations worldwide



### MCC

- Simple control of main machine functions through soft keys
- Graphical configuration
- Fast execution of commands



### woodWOP DXF Basic

- Interface for CAD-Data Import
- Basis to generate woodWOP programs



### Machine Data Recording Basic

- Machine Data Recording – collecting and evaluating machine states via time meter and event meter
- Keeping you always up-to-date





## All inclusive – powerTouch

**POWERTOUCH IS THE LATEST OPERATING PHILOSOPHY OF THE HOMAG GROUP: SIMPLE, UNIFORM, ERGONOMICAL, EVOLUTIONARY.** The innovative touchscreen operating concept unites design and function to create a totally new control generation.

At the focus of this solution is a large multi-touch monitor in widescreen format, which is used to control machine functions by direct touch contact. The entire user interface has been optimized for touch operation and offers an array of help and assistance functions designed to radically simplify the work experience. Standardized control elements and software modules ensure that all HOMAG Group machines

can be operated with the same way using powerTouch.

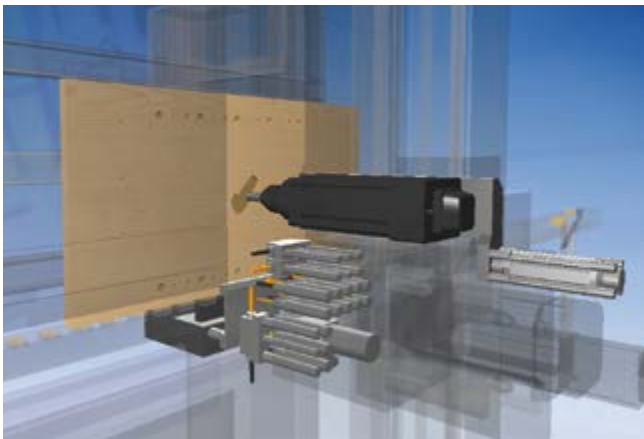
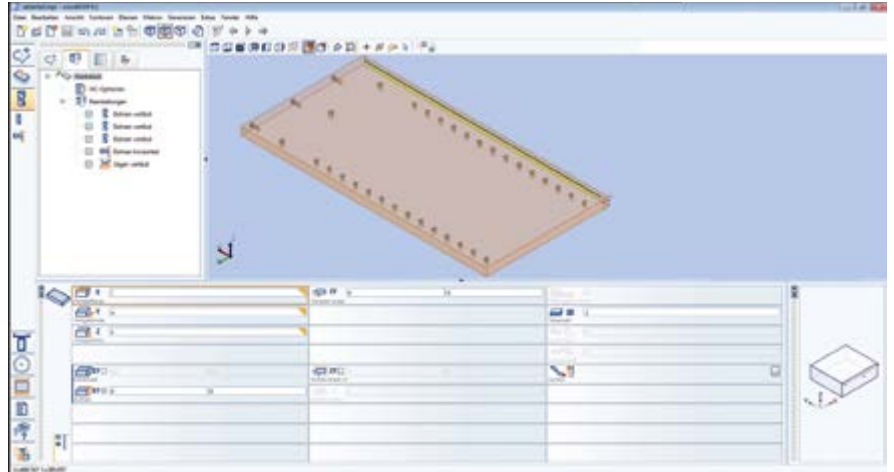
They differ only in terms of a few machine-specific details. This not only simplifies the operation of different machines, but also makes for greater efficiency by significantly reducing time for servicing and training.



# Option – Software

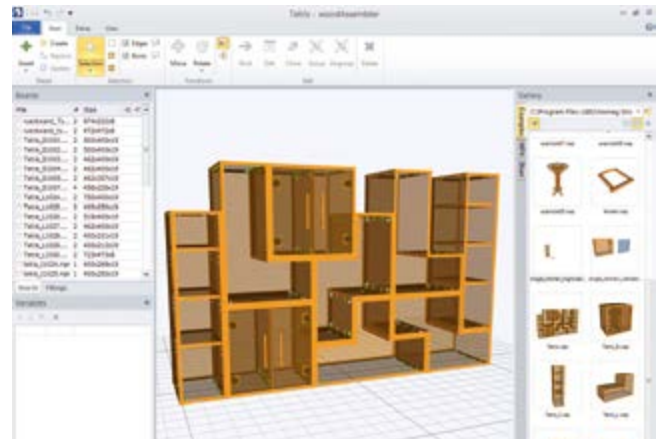
## woodWOP | further Licences

- Modern software based on Windows®
- More than 30.000 installations worldwide



## 3D CNC-Simulator

- Simulates the processing acc. to the order set in the NC program
- Allows time calculation



## woodAssembler

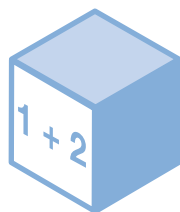
- To visualize woodWOP programs (MPR) in 3D
- Enables the construction of individual workpieces to finished objects

## ADDITIONAL SOFTWARE

1. woodWOP Office

2. 3D CNC-Simulator

3. woodAssembler

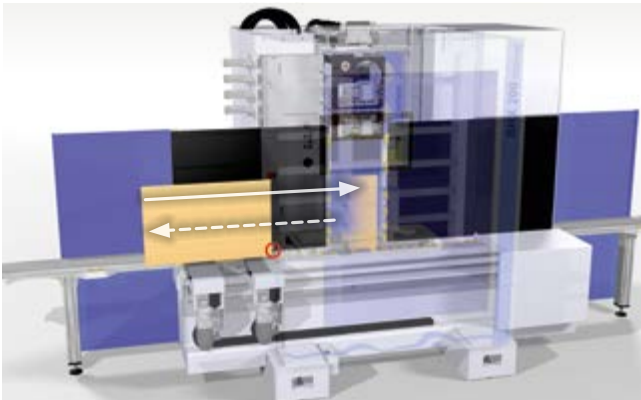


Package

## Further software options

### YOU HAVE THE CHOICE:

1. PROCESS ACCELERATION
2. PROCESS SAFEGUARDING
3. PROCESS AUTOMATION

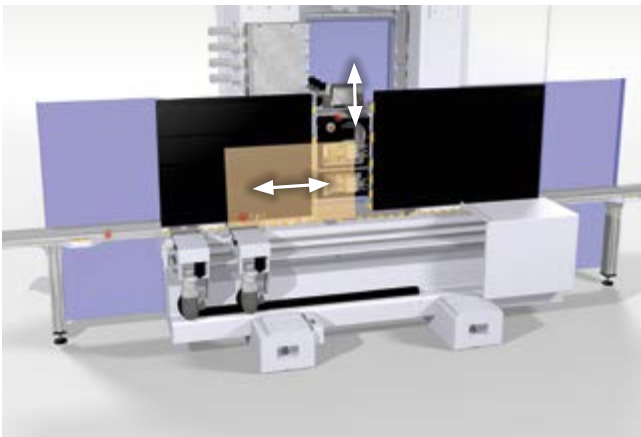


#### 1. PROCESS ACCELERATION:

Let the machine calculate for you! In doing so you accelerate processes and safeguard quality

##### Length depending processing in X-direction – automatic adjustment of drills depending on dimensions

- After the workpiece has been released for processing its length is measured accurately by a measuring run. Dimension-dependent drillings are then corrected automatically by possibly determined tolerances. You save time and gain quality.



#### 2. PROCESS SAFEGUARDING:

Plausibility check – Benefit from additional safeguarding of processes

- Control of the workpiece by sensor technology in X- and Y-direction. Comparison with the values in the database. If the defined tolerance value is exceeded, the current process stops. At the same time the operator receives a message to correct the workpiece. This way you remain on the safe side.



#### 3. PROCESS AUTOMATION:

Automate your processes - Benefit from the optional barcode connection

- Barcode reading system inclusive: Scanner, Software (also available separately)
- Supported barcodes: 1D – Barcode, 2D – Data Matrix Code
- Every workpiece is exactly identified for the further workpiece flow
- Basis for a faster flow of workpieces with higher process quality

## Option – Workpiece return system

### YOUR BENEFITS AT A GLANCE:



**Minimized  
waiting time!**

# 15%

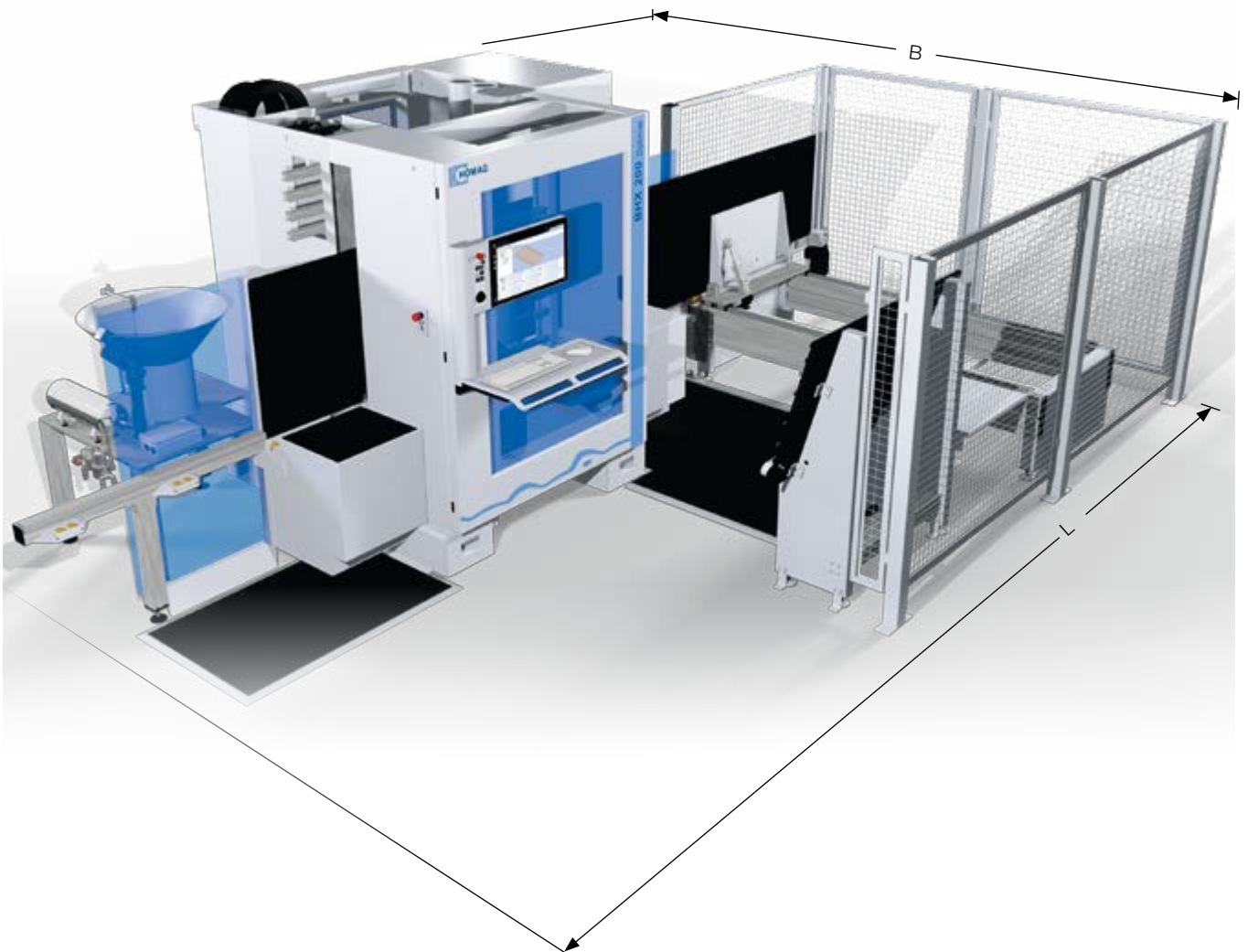
**Your processes  
become more  
efficient by up  
to 15%**



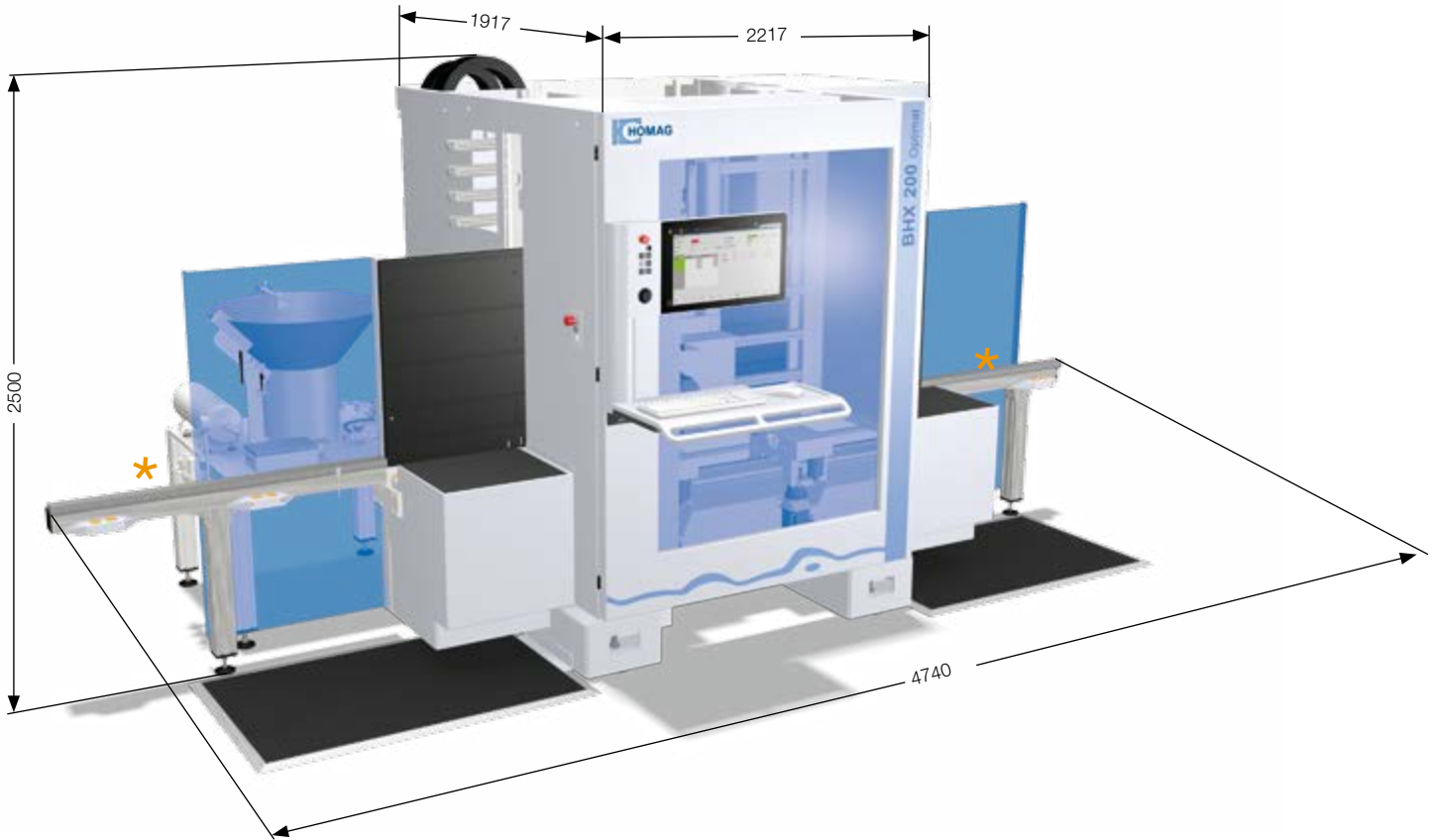
**Compact handling concept!**

Place requirement for minimum stage of extension (L 6400 mm x W 3900 mm)

Place requirement for maximum stage of extension (L 7200 mm x W 3900 mm)



# Technical data

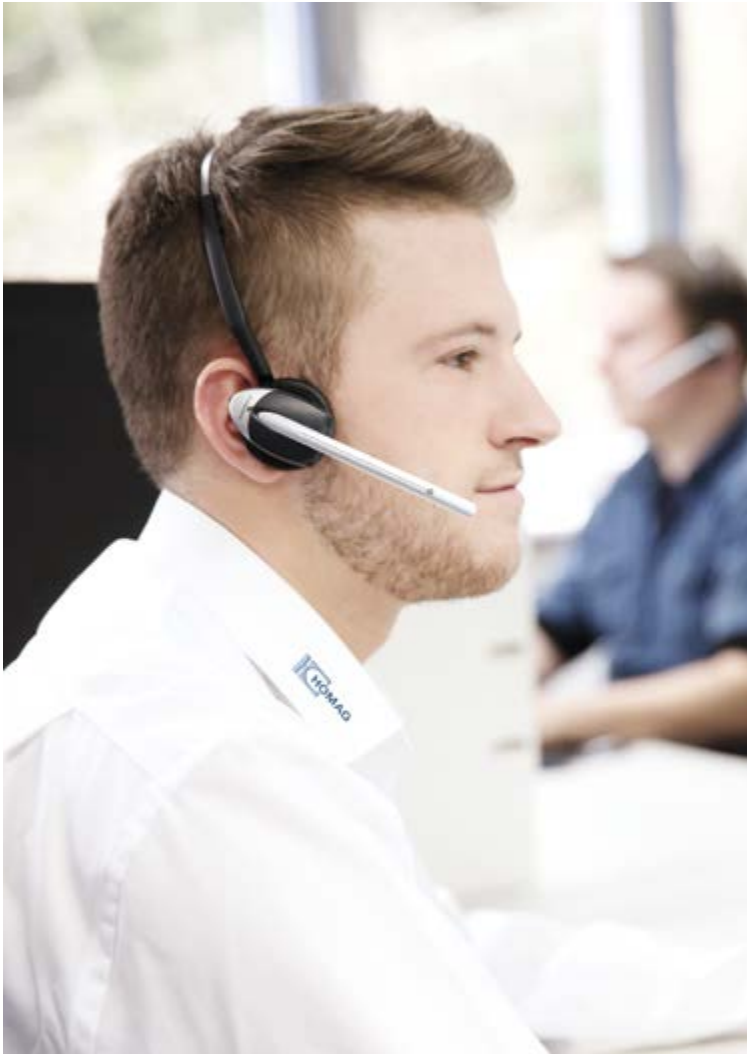


dimensions in mm

★ A corresponding safety distance must be maintained in the in- and outfeed direction! (See documentation)

## TECHNICAL DATA HOMAG BHX 200

<b>Workpiece dimensions max.</b>	L x W x T	mm	3050 x 1250 x 80	3050 x 1250 x 80
<b>Workpiece dimensions min.</b>	L x W x T	mm	200 x 50 x 8	200 x 50 x 8
<b>Workpiece dimensions max.</b>	L x W x T <b>with return system</b>	mm	2300 (3050) x 1250 x 80	2300 (3050) x 1250 x 80
<b>Workpiece dimensions min.</b>	L x W x T <b>with return system</b>	mm	350 x 60 x 8	350 x 60 x 8
<b>Vector speed</b>		m/min	(X - Y) 50 - (Z) 15	(X - Y) 50 - (Z) 15
<b>Compressed air</b>		bar	6	6
<b>Compressed air connection</b>		inch	R 1/2	2 x R 1/2
<b>Dust extraction plug</b>		mm	2 x Ø 160	2 x Ø 160
<b>Dust extraction volume</b>		m <sup>3</sup> /h	min. 4350	min. 4350
<b>Total machine weight</b>		kg	appr. 3,200	appr. 3,200
<b>Electrical connected load</b>		kW	21.0	21.0




**1,200**  
service employees around the world

**85.2 %**  
less on-site-services through successful remote diagnosis

**650**  
processed spare parts orders / day

**>150 000**  
machines, all electronically documented in 28 different languages – in eParts



## HOMAG Group LifeCycleServices

The sale of our machines comes with all-in optimum service backup and individual advice. We support you with service innovations and products which are especially tailored to your requirements. With short response times and fast customer solutions we guarantee consistently high availability and economical production – over the entire life cycle of your machine.



### Remote Service

- Hotline support via remote diagnosis regarding control, mechanics and process technology. Thus the on-site service can be reduced by 85.2 %!
- Mobile applications such as ServiceBoard reduce the costs through fast help in case of troubles by mobile live video diagnosis, online service message and the online spare parts shop eParts



### Spare Part Service

- Identify, request and order spare parts around the clock via [www.eParts.de](http://www.eParts.de)
- Local availability of parts offered by our sales and service companies as well as sales and service partners all over the world
- Reduction of downtimes through defined spare parts and wear parts kits



### Field Service

- Increased machine availability and product quality by certified service staff
- Regular checks through maintenance / inspection guarantee the highest quality of your products
- We offer you the highest availability of technicians in order to reduce downtimes in case of unpredictable troubles

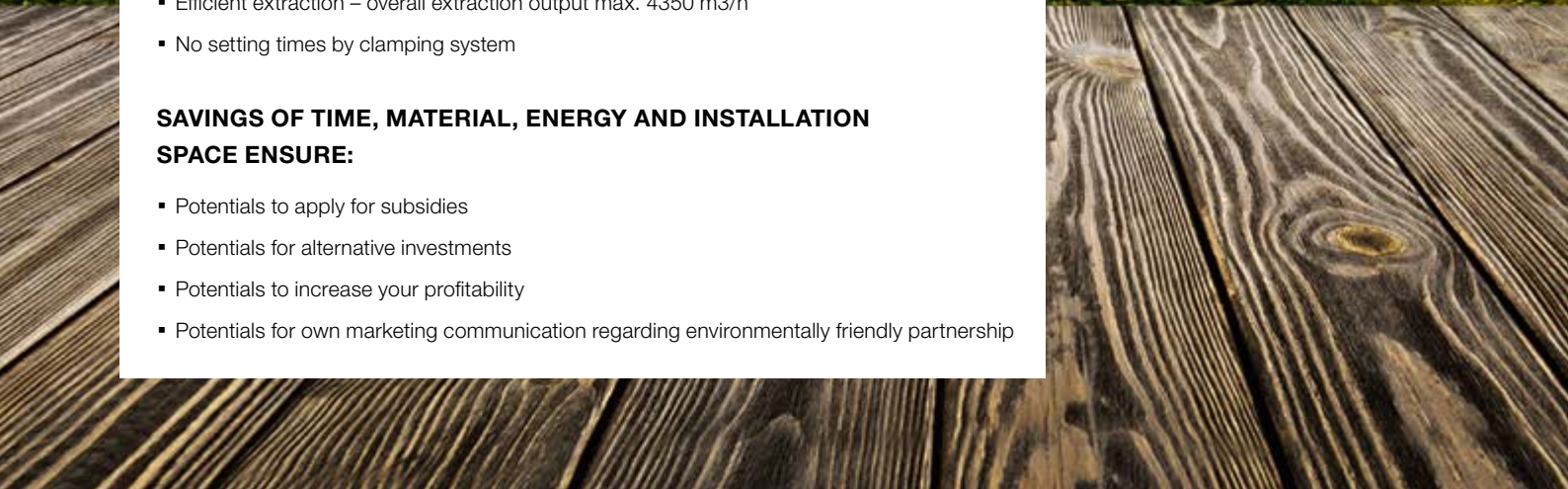


# Saving resources, saving money

## **BHX 200 WITH ecoPlus**

- Low energy consumption (on average less than 10 kW) by efficient drive technology
- Vacuum-free workpiece clamping and low compressed air consumption
- Efficient extraction – overall extraction output max. 4350 m<sup>3</sup>/h
- No setting times by clamping system

## **SAVINGS OF TIME, MATERIAL, ENERGY AND INSTALLATION SPACE ENSURE:**

- Potentials to apply for subsidies
  - Potentials for alternative investments
  - Potentials to increase your profitability
  - Potentials for own marketing communication regarding environmentally friendly partnership
- 

**HOMAG Bohrsysteme GmbH**

Benzstraße 10-16  
33442 Herzebrock-Clarholz  
GERMANY  
Tel.: +49 5245 445-0  
info-herzebrock@homag.com  
www.homag.com



For the Success of Original  
Technology. A VDMA Campaign