

VKV 710 Cardboard-Box Closing Machine

VKV 710

VKV 200

VKV 020

Cardboard-box closing machine for the automatic closing of cardboard-boxes by means of hot melt. Side-closing quality for the INDUSTRY sector. Suited for series operation up to batch size 1.

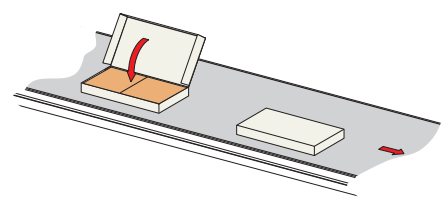
- A high packing quality
- A high-grade optical appearance of the package
- No adhesive tape necessary
- Automatic cardboard measurement at the infeed
- High capacity - up to 10 cardboard-boxes/min in series production
- Cardboard height reduced from 28 mm to 22 mm (optional)
- Can be integrated into a packaging line



- Savings of up to 85 % thanks to hot melt technology (compared to using adhesive tape)
- Savings of up to 40 % in cardboard consumption thanks to the usage of side-closing packing designs



HOMAG Automation GmbH
Ligmatech Str. 1
09638 Lichtenberg
Deutschland
www.homag-automation.com



VKV 710 Cardboard-Box Closing Machine

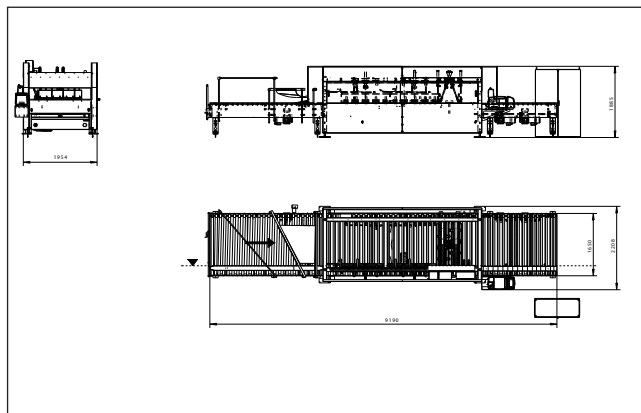
Incoming packages are pushed onto the transfer rollers from the upstream conveying line and accelerated. During this operation, the vertically standing lid is tilted at the same time.

In a continuous operation, 1 and/or 2 traces of hot-melt-type adhesive are applied onto the long side of the cardboard box depending on the height of the cardboard box.

The packages are positioned over the front edge and stopped. By means of a traversable nozzle, the hot-melt-type adhesive is applied onto the front transverse side. Subsequently, both lid flaps are glued with the cardboard box by means of pressure elements from above. After a short pressing time, the packages are conveyed one segment further and the rear transverse side is closed according to the same principle.

Thanks to this closing method and the identification of the package width in the loading zone of the machine, it is possible to close packages of different sizes one after the other (number of pieces 1). It is not necessary to enter the dimensions of the packages.

In the series operation, either the first cardboard box is measured (width) and this value is adopted for the whole series or the width of the cardboard box is given by the control..



VKV 710	
Package length (internal dimensions)	400 - 2,500 mm
Package width (internal dimensions)	180 - 1,100 mm
Package height (internal dimensions)	28 - 250 mm
Weight	max. 80 kg
Capacity VKV710/25/11 und -13 Series operation	6 - 10 Packages/min up to 10 Packages/min
Batch size 1	up to 9 Packages/min
Capacity VKV710/30/11 und -13 Series operation	5 - 9 Packages/min up to 9 Packages/min
Batch size 1	up to 8 Packages/min
Working height	900 +/- 30 mm
Conveying speed packaging belt	35 m/min
Operating pressure	6 bar
Control	powerControl PC22T



- **1** Cardboard box height: 22 -27 mm
- **2** Packaging area two-sided
- **3** Codesoft- label software
- **4** Administration of Woodbase reference numbers
- Coupling of printer to woodLine/woodList
- **woodList-Plus**
Extension of woodList Standard for data migration and data transfer
- **Teleservicenet**

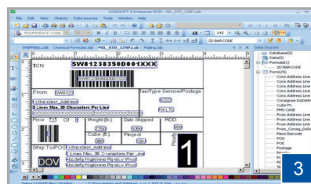
Other options, see price list



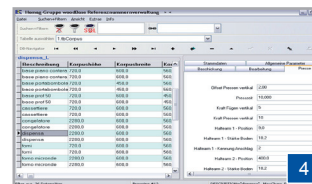
Packaging area two-sided



Cardboard box height: 22 -27 mm



Codesoft- label software



Administration of Woodbase reference numbers



lifeline | service

- **eparts** Spare parts ordering online - around-the-clock !
- **VKV710** emergency package
- **WE CARE** - Full service package
warranty extension, inspection, data storage...