

Throughfeed Drilling Machines Optimat BST Series



Optimat BST 501 / 503 / 505 / 507



Contents

| | Page |
|-----------------|-------------|
| Optimat BST 503 | 4 / 5 |
| Optimat BST 505 | 6 / 7 |
| Optimat BST 507 | 8 / 9 |
| Optimat BST 501 | 10 / 11 |
| Basics | 12 / 13 |
| Options | 14 / 15 |
| Software | 16 / 17 |
| Systems | 18 / 19 |



BST 503

EFFICIENT POWER

Highlights:

- Auxiliary free resetting of processing aggregates
- Positioning aid system for machine set-up - automatic clamping when reaching the position
- Position control system of the supports and drilling motors during production
- High flexibility due to the proven exchangeable drilling block system
- Integrated broad chip transport belt to cover the complete drilling range
- Separated transport system - with 3 individually driven sections
- PC based control with TFT-Monitor
- Ethernet „on Board“
- Front USB interface
- woodWOP Programming System on the machine
- Operator friendly surface topDrill





Pictures may also show options.

Technical data of the Basic Equipment

Optimat BST 503

| | |
|--|-------------------------------------|
| Number of vertical supports bottom | 4 |
| Number of vertical supports top | - |
| Vertical drilling block with 11 spindles | 8 |
| Horizontal drilling block with 21 spindles | 2 |
| Horizontal drilling block with 11 spindles | - |
| NC-Stop | - |
| Machine dimensions L / W / H | 5500 / 3710 / 2000 mm |
| Working height | 950 mm |
| Workpiece dimensions L / W | 250 - 2500 mm / (80°) 100 - 1000 mm |
| Workpiece thickness | 12 - 60 mm |
| Chip conveyor belt | ✓ |
| Weight | 8000 kg |

BST 505

POWERFUL PERFORMANCE

Highlights:

- Auxiliary free resetting of processing aggregates
- Positioning aid system for machine set-up - automatic clamping when reaching the position
- Position control system of the supports and drilling motors during production
- High flexibility due to the proven exchangeable drilling block system
- Integrated broad chip transport belt to cover the complete drilling range
- Separated transport system - with 3 individually driven sections
- PC based control with TFT-Monitor
- Ethernet „on Board“
- Front USB interface
- woodWOP Programming System on the machine
- Operator friendly surface topDrill





Pictures may also show options.

Technical data of the Basic Equipment

Optimat BST 505

| | |
|--|-------------------------------------|
| Number of vertical supports bottom | 4 |
| Number of vertical supports top | 2 |
| Vertical drilling block with 11 spindles | 12 |
| Horizontal drilling block with 21 spindles | 2 |
| Horizontal drilling block with 11 spindles | - |
| NC-Stop | - |
| Machine dimensions L / W / H | 5500 / 3710 / 2800 mm |
| Working height | 950 mm |
| Workpiece dimensions L / W | 250 - 2500 mm / (80°) 100 - 1000 mm |
| Workpiece thickness | 12 - 60 mm |
| Chip conveyor belt | ✓ |
| Weight | 8500 kg |

✓ = contained in the Basic Equipment • = optionally available - = not available

* only for single machine 7

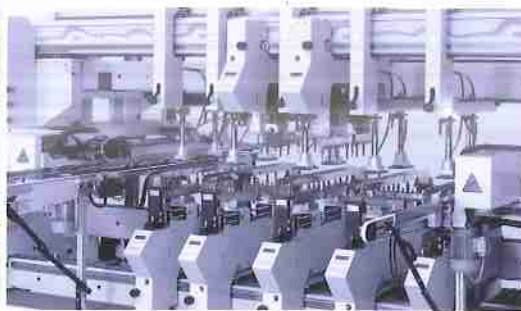
BST 507

PREMIUM DYNAMIC

Highlights:

- Auxiliary free resetting of processing aggregates
- Positioning aid system for machine set-up - automatic clamping when reaching the position
- Position control system of the supports and drilling motors during production
- High flexibility due to the proven exchangeable drilling block system
- Integrated broad chip transport belt to cover the complete drilling range
- Separated transport system - with 3 individually driven sections
- PC based control with TFT-Monitor
- Ethernet „on Board“
- Front USB interface
- woodWOP Programming System on the machine
- Operator friendly surface topDrill





Pictures may also show options.

Technical data of the Basic Equipment

| Technical data of the Basic Equipment | Optimat BST 507 |
|--|-------------------------------------|
| Number of vertical supports bottom | 5 |
| Number of vertical supports top | 2 |
| Vertical drilling block with 11 spindles | 14 |
| Horizontal drilling block with 21 spindles | - |
| Horizontal drilling block with 11 spindles | 4 |
| NC-Stop | ✓ |
| Machine dimensions L / W / H | 5500 / 3710 / 2800 mm |
| Working height | 950 mm |
| Workpiece dimensions L / W | 250 - 2500 mm / (80°) 100 - 1000 mm |
| Workpiece thickness | 12 - 60 mm |
| Chip conveyor belt | ✓ |
| Weight | 8500 kg |

✓ = contained in the Basic Equipment • = optionally available - = not available

* only for single machine 9

BST 501

ACCURATE DOWELLING

Highlights:

- Simple dowel adjustment
- Auxiliary free resetting of processing aggregates
- Positioning aid system for machine set-up - automatic clamping when reaching the position
- Integrated broad chip transport belt to cover the complete drilling range
- Separated transport system - with 3 individually driven sections
- PC based control with TFT-Monitor
- Ethernet „on Board“
- Front USB interface
- woodWOP Programming System on the machine
- Operator friendly surface **topDrill**





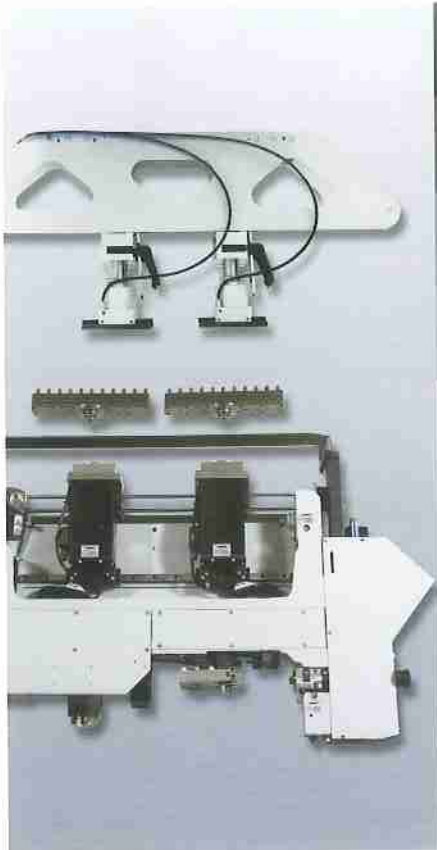
Technical data of the Basic Equipment

| | |
|------------------------------|-------------------------------------|
| Number of dowel tools | 8 (4 per side) |
| Dowel diameter | 8 mm |
| Dowel length | 30 - 40 mm |
| Machine dimensions L / W / H | 5500 / 3710 / 2000 mm |
| Working height | 950 mm |
| Workpiece dimensions L / W | 250 - 2500 mm / (80°) 100 - 1000 mm |
| Workpiece thickness | 12 - 60 mm |
| Chip conveyor belt | ✓ |
| Weight | 7000 kg |

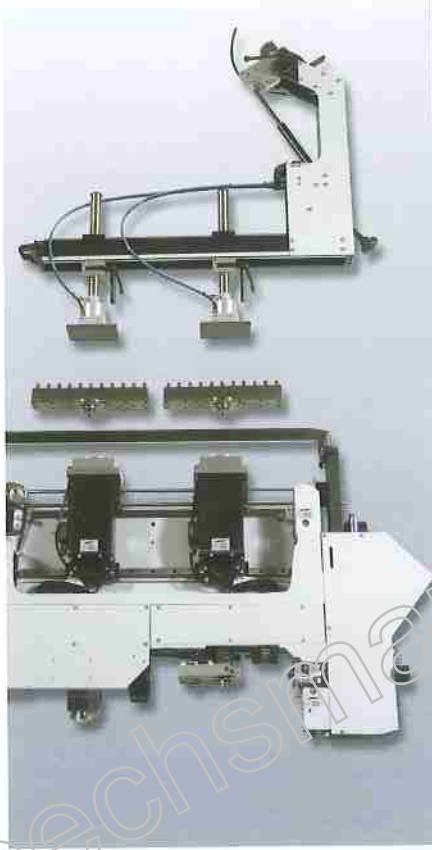
Optimat BST 501

Pictures may also show options.

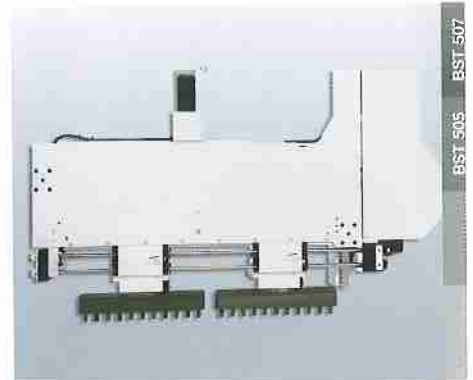
OPTIONS INDIVIDUALITY²



Lower drilling support unit PLUS 501 / 503



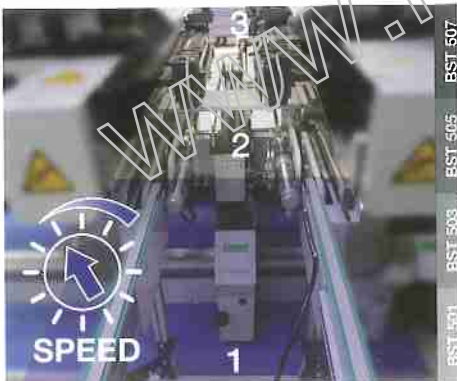
Lower drilling support unit PLUS 505 / 507



Upper drilling support unit PLUS 505 / 507



Driven workpiece support



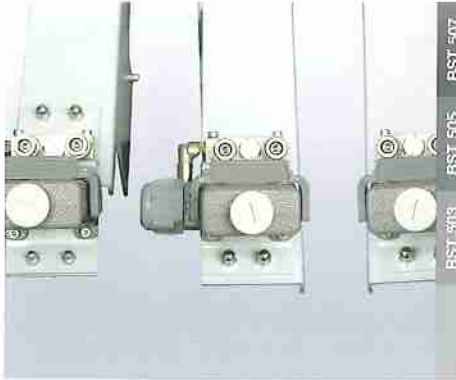
Frequency controlled transport system



Exchangeable drilling blocks



Drilling aggregate for longitudinal edges



Interface for drilling aggregate for longitudinal edges



Narrow parts magazine

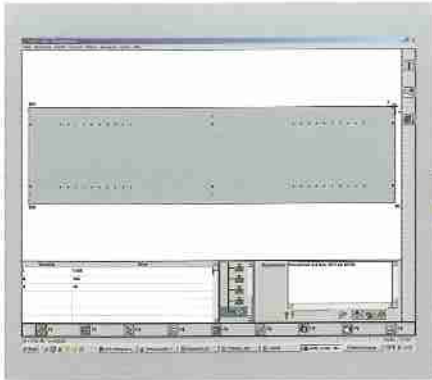


Air-conditioned cabinet

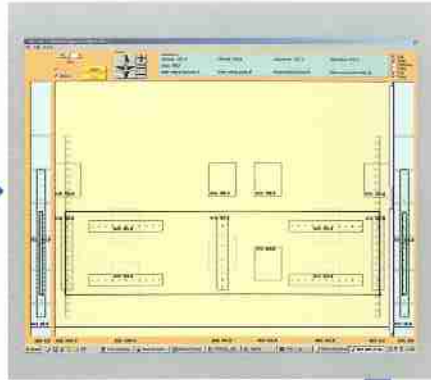
| Options | BST 501 | BST 503 | BST 505 | BST 507 |
|---|---------|---------|---------|---------|
| Lower drilling support unit PLUS 501 / 503 | max. 4 | max. 3 | - | - |
| Lower drilling support unit PLUS 505 / 507 | - | - | max. 4 | max. 3 |
| Upper drilling support unit PLUS 505 / 507 | - | - | max. 2 | max. 2 |
| Driven workpiece support | • | • | • | • |
| Frequency controlled transport system | • | • | • | • |
| Exchangeable drilling blocks | • | • | • | • |
| Drilling aggregate for longitudinal edges | - | • | • | • |
| Interface for drilling aggregate for longitudinal edges | - | • | • | • |
| Narrow parts magazine | • | • | • | • |
| Air-conditioned cabinet | • | • | • | • |

✓ = contained in the Basic Equipment • = optionally available -- = not available

SOFTWARE READY TO RACE



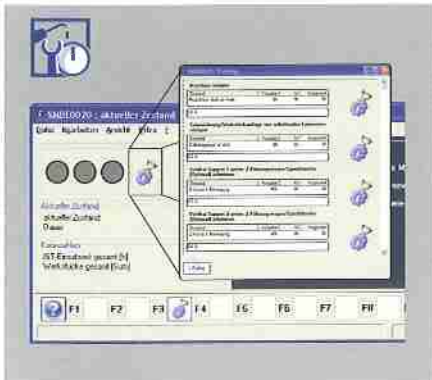
woodWOP



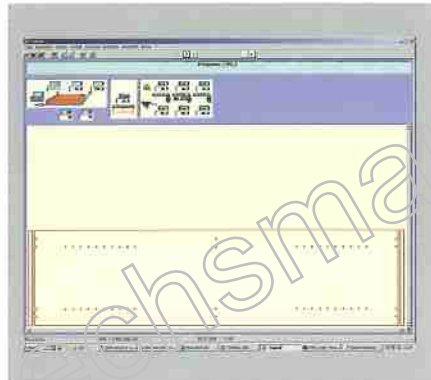
NC-Data Postprocessor



DXF post processor



MDE Basic



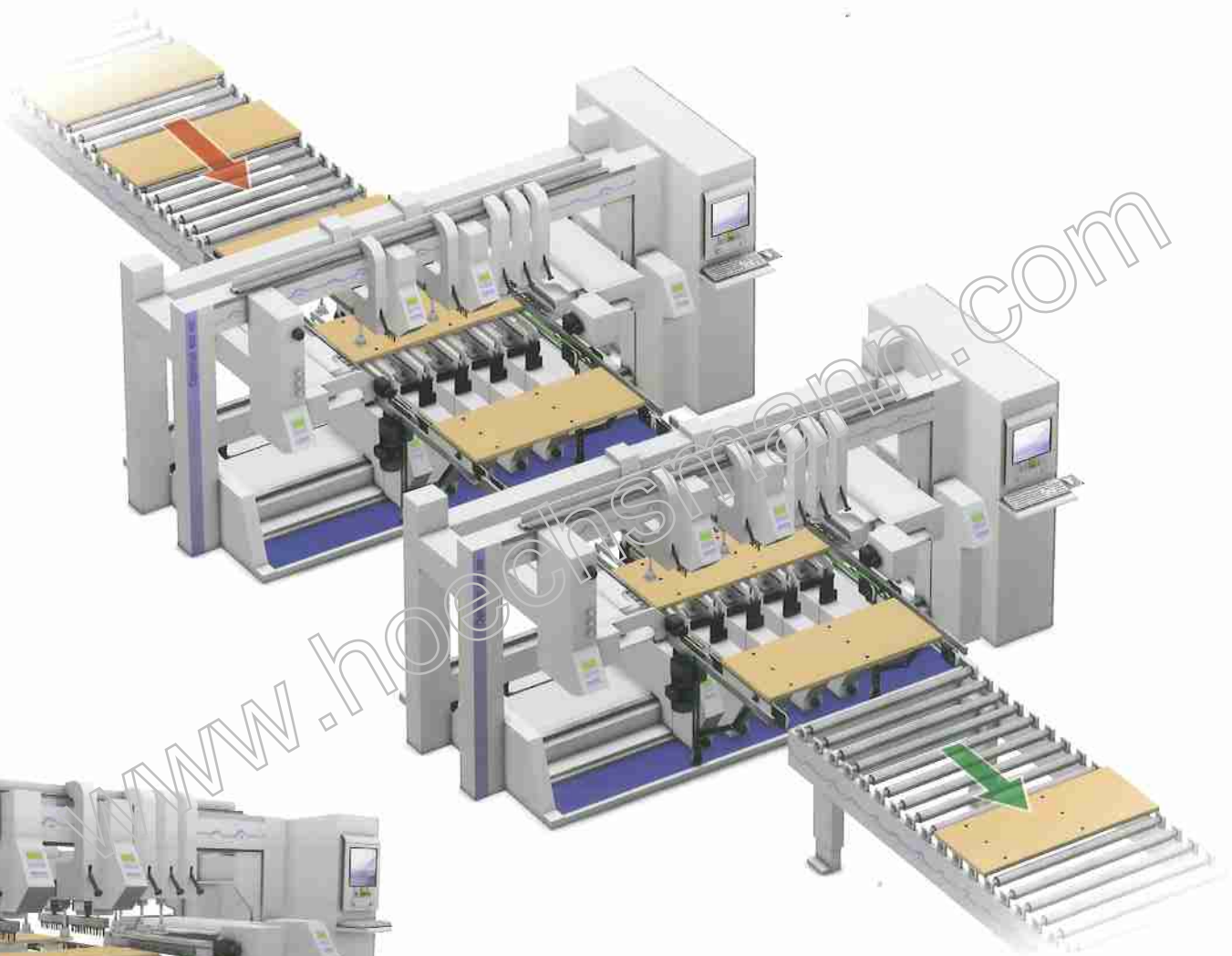
topDrill

| Options | BST 501 | BST 503 | BST 505 | BST 507 |
|---|---------|---------|---------|---------|
| External work place woodWOP | • | • | • | • |
| External work place NC-Data Postprocessor | • | • | • | • |
| MDE Basic | • | • | • | • |
| topDrill | • | • | • | • |
| DXF post processor | • | • | • | • |

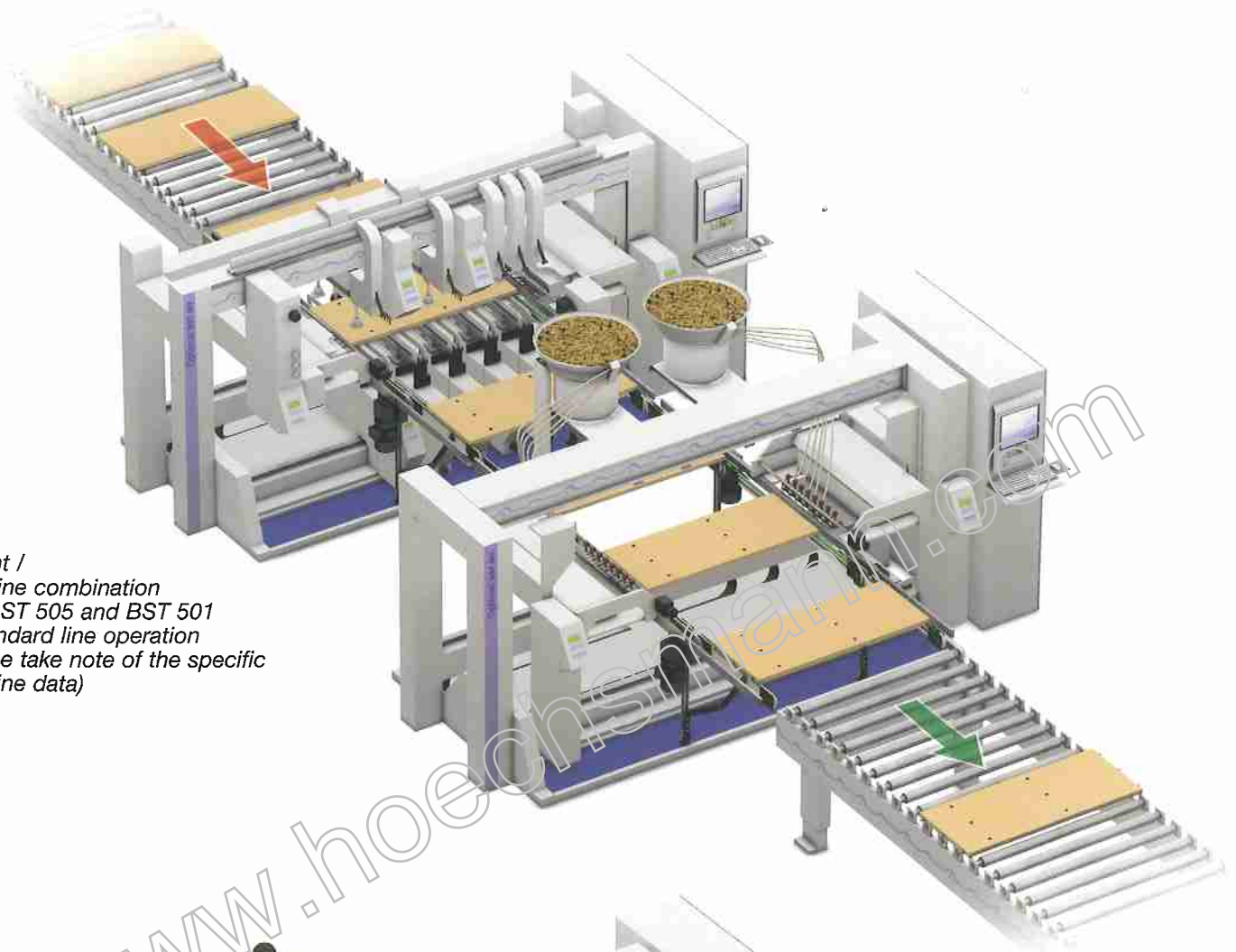
✓ = contained in the Basic Equipment • = optionally available - = not available

SYSTEMS

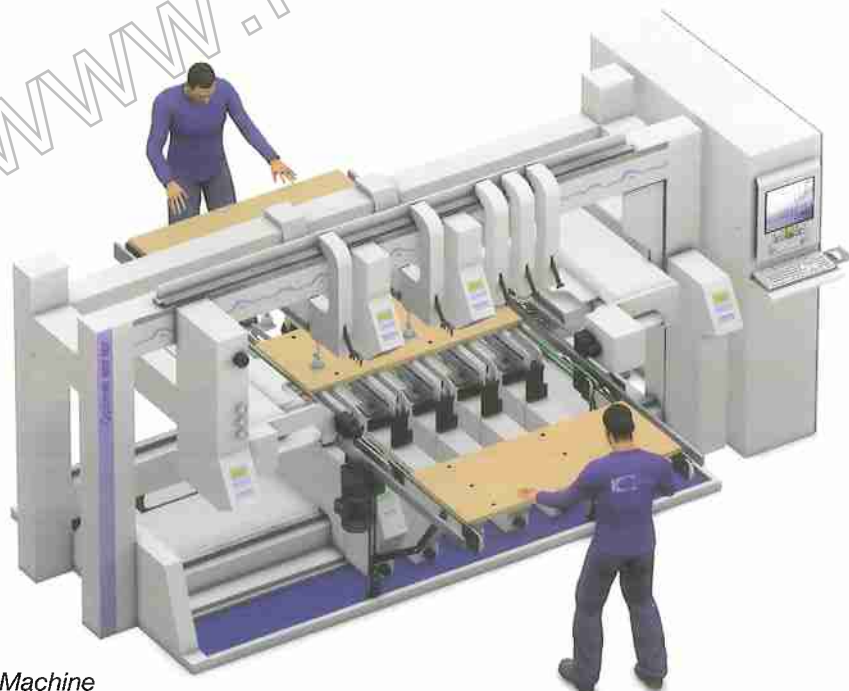
ADAPTABLE!



*Variant 1
Machine combination
e.g. 2 x BST 507
in standard line operation
(Please take note of the specific
machine data)*



*Variant /
Machine combination
e.g. BST 505 and BST 501
in standard line operation
(Please take note of the specific
machine data)*



*Variant Single Machine
e.g. BST 507*